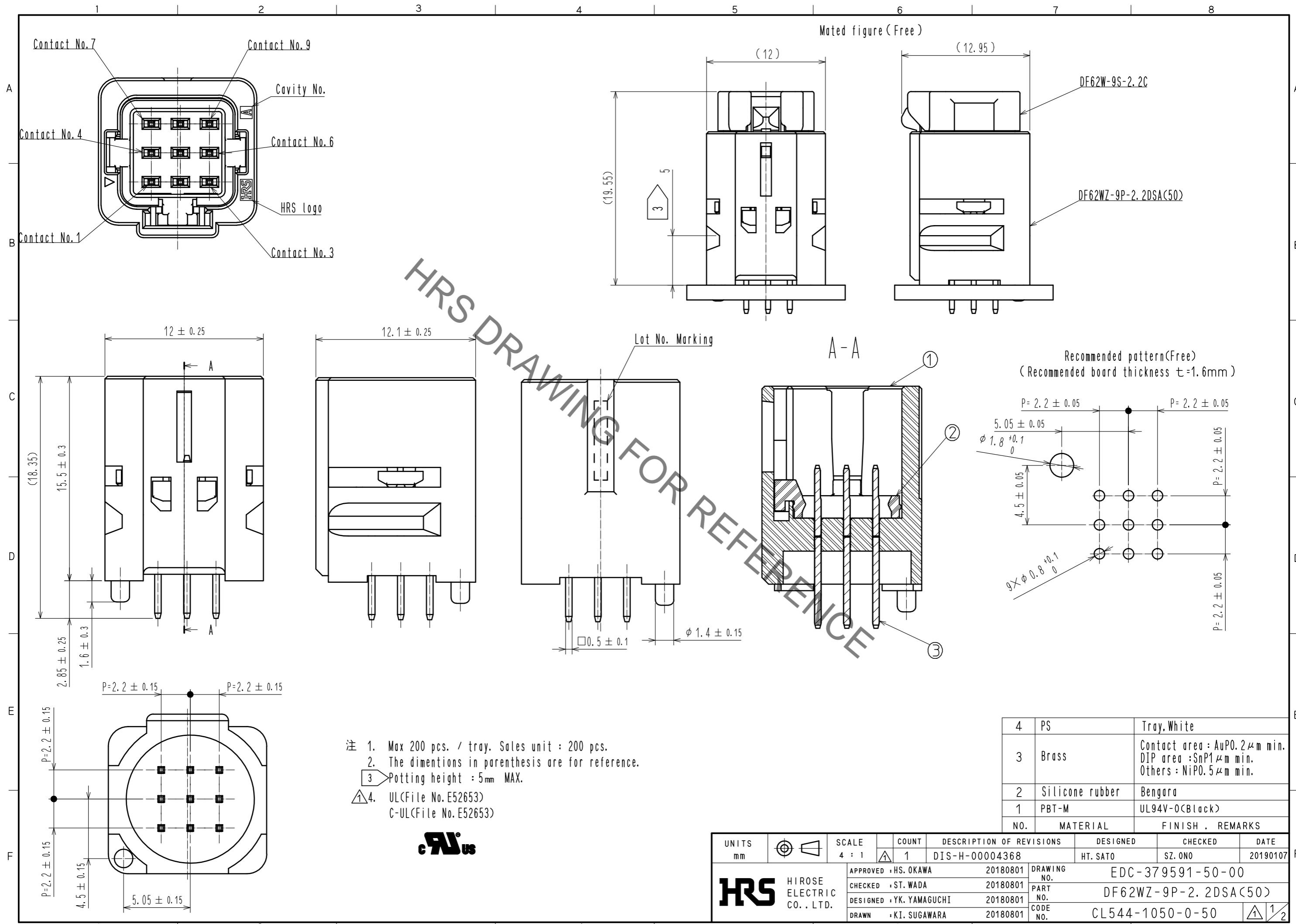


Aug.1.2021 Copyright 2021 HIROSE ELECTRIC CO., LTD. All Rights Reserved.
In case of consideration for using Automotive equipment / device which demand high reliability, kindly contact our sales window correspondents.



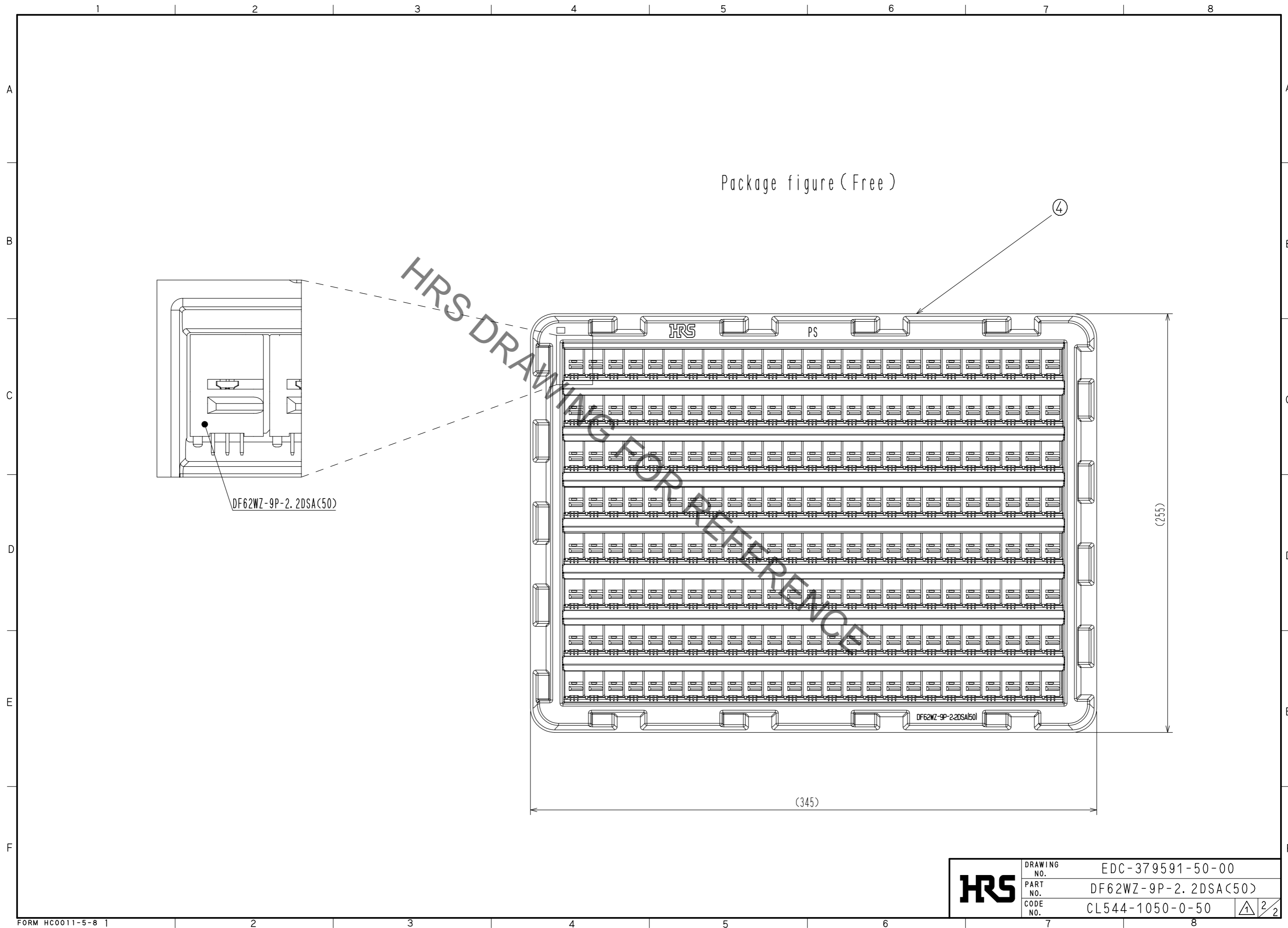
HRS DRAWING FOR REFERENCE

NO.	MATERIAL	FINISH . REMARKS
4	PS	Tray, White
3	Brass	Contact area : AuPO.2μm min. DIP area : SnP1μm min. Others : NiPO.5μm min.
2	Silicone rubber	Bengara
1	PBT-M	UL94V-0(Black)

UNITS	SCALE	COUNT	DESCRIPTION OF REVISIONS	DESIGNED	CHECKED	DATE
mm	4 : 1	1	DIS-H-00004368	HT. SATO	SZ. ONO	20190107
APPROVED : HS. OKAWA 20180801			DRAWING NO. EDC-379591-50-00			
CHECKED : ST. WADA 20180801			PART NO. DF62WZ-9P-2.2DSA(50)			
DESIGNED : YK. YAMAGUCHI 20180801			CODE NO. CL544-1050-0-50			
DRAWN : KI. SUGAWARA 20180801			1/2			



Aug.1.2021 Copyright 2021 HIROSE ELECTRIC CO., LTD. All Rights Reserved.
In case of consideration for using Automotive equipment / device which demand high reliability, kindly contact our sales window correspondents.



HRS	DRAWING NO.	EDC-379591-50-00
	PART NO.	DF62WZ-9P-2.2DSA(50)
	CODE NO.	CL544-1050-0-50
		2/2