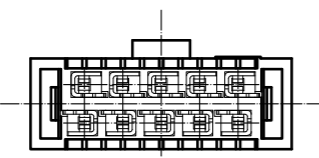
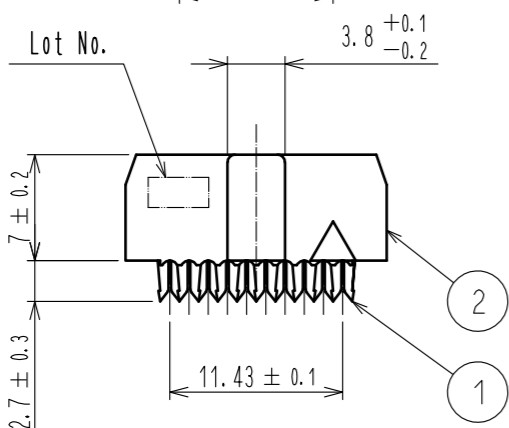
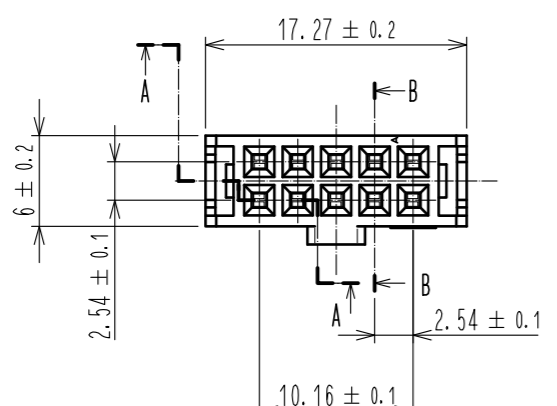
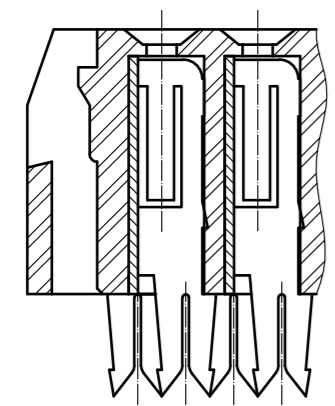


Aug.1.2024 Copyright 2024 HIROSE ELECTRIC CO., LTD. All Rights Reserved.  
 In case of consideration for using Automotive equipment / device which demand high reliability, kindly contact our sales window correspondents.

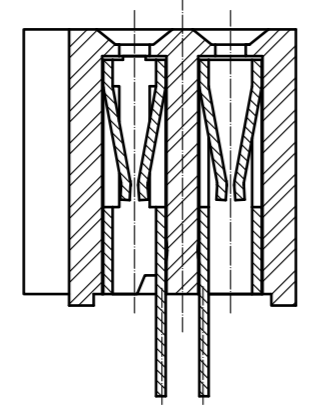
**Body**



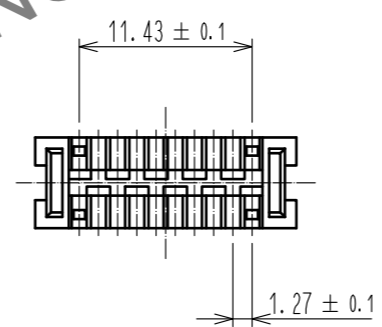
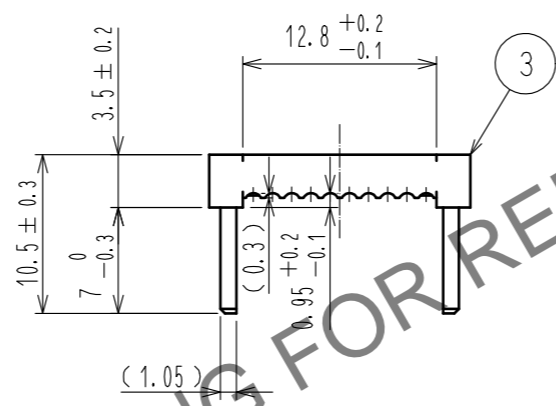
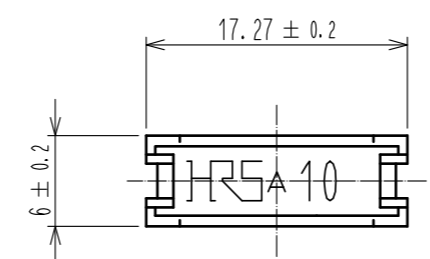
**A-A (5:1)**



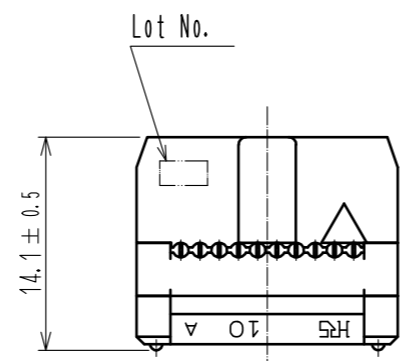
**B-B (5:1)**



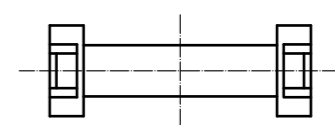
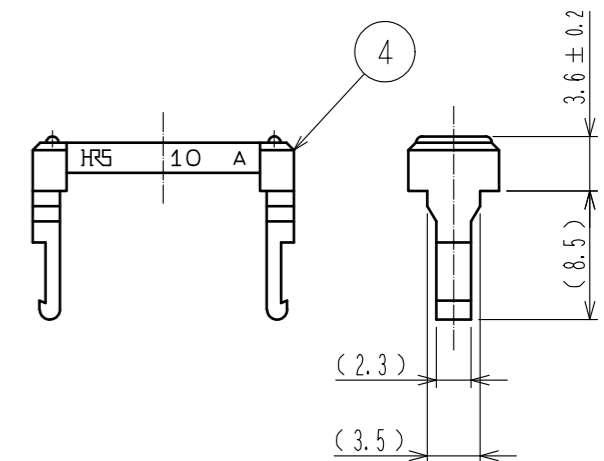
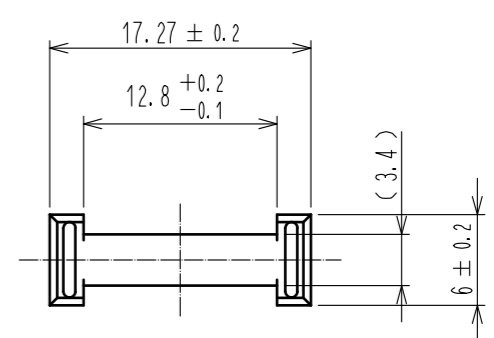
**Protector**



**Assembly figure**



**Clamp**



HRS DRAWING FOR REFERENCE

Notes 1 The dimensions in parentheses are for reference.  
 2 Once a connector is harnessed, the connector shall not be re-harnessed to a different cable. Protectors and clamps shall also not be re-used once used in assembly. When repair is needed, please replace the connector as well as all connector parts.

Re-using connector and connector parts may cause continuity failure due to contact deformation / breakage, lock part destruction, etc.

2	PBT	BLACK	UL94V-0	4	PBT	BLACK	UL94V-0
1	BERYLLIUM COPPER ALLOY	Over plating : Gold 0.2μm min.		3	PBT	BLACK	UL94V-0
		Under plating : Nickel 3μm min.					
NO.	MATERIAL	FINISH	REMARKS	NO.	MATERIAL	FINISH	REMARKS
UNITS	mm	SCALE	2 : 1	COUNT	1	DESCRIPTION OF REVISIONS	DIS-F-00005555
						DESIGNED	AK. IWAHORI
						CHECKED	HT. YAMAGUCHI
						DATE	20191231
<b>HRS</b> HIROSE ELECTRIC CO., LTD.		APPROVED	HS. OKAWA	20110322	DRAWING NO. EDC3-016223-00		
		CHECKED	HT. YAMAGUCHI	20110322	PART NO. HIF3A-10D-2.54R		
		DESIGNED	SY. KAMIGA	20110322	CODE NO. CL562-0057-5-00		
		DRAWN	HK. SUNADORI	20110318	1/1		