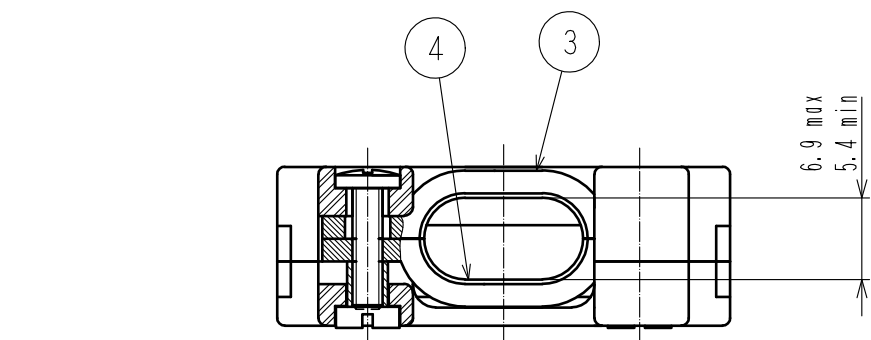
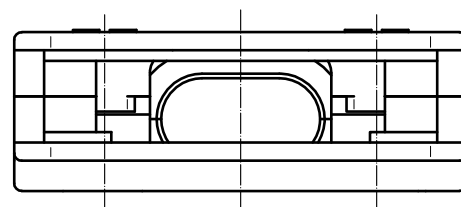
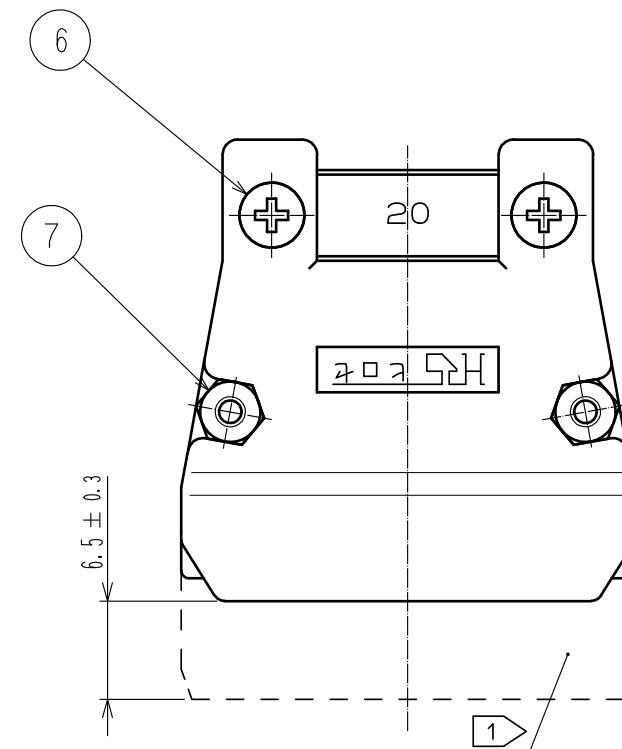
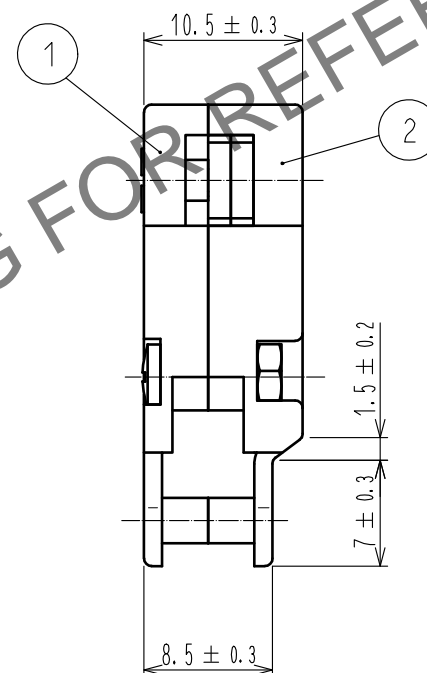
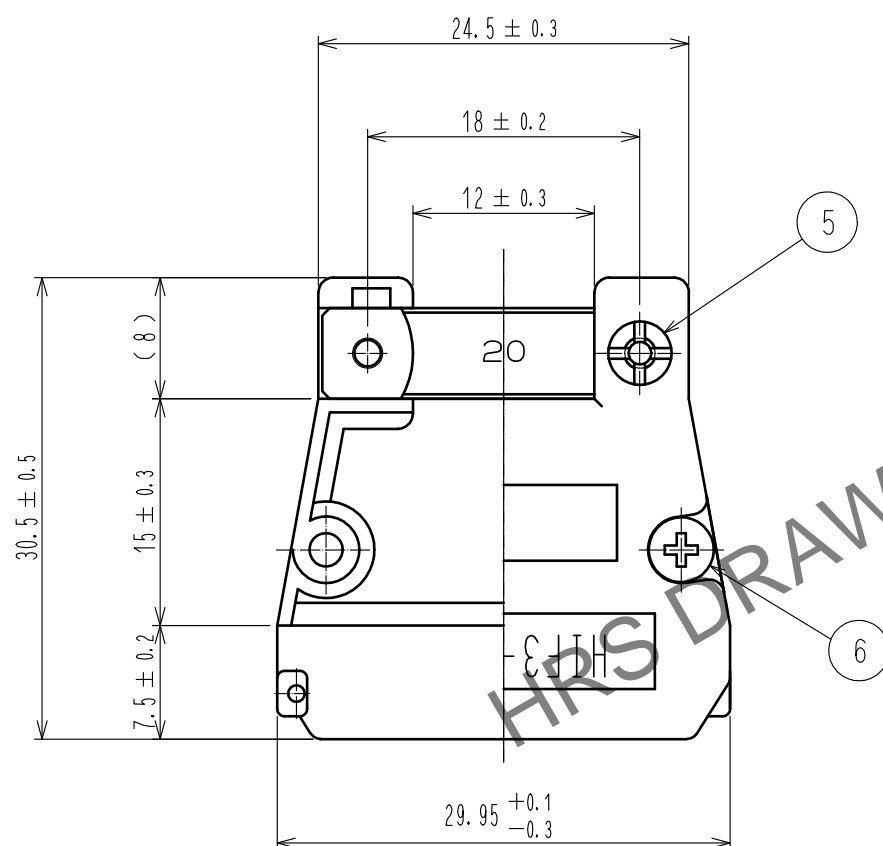
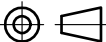
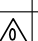



Jun.1.2024 Copyright 2024 HIROSE ELECTRIC CO., LTD. All Rights Reserved.  
In case of consideration for using Automotive equipment / device which demand high reliability, kindly contact our sales window correspondents.



- Notes
- 1 Applicable housing to the Cover Case shall be as following. HIF3BA-20D-2.54C
  - 2 Pack part 3-7 in one bag. The bag, case(A) and (B) are to be packed together.
  - 3 The dimensions in parentheses are for reference.
  - 4 This product does not accept a pin header with F type lock as a corresponding connector.



4	STEEL	NICKEL PLATING		7	BRASS	NICKEL PLATING, M2 NUT										
3	STEEL	NICKEL PLATING		6	BRASS	NICKEL PLATING										
2	ABS	BLACK	UL94V-0			M2, L=8, SELF-BINDING SCREW										
1	ABS	BLACK	UL94V-0	5	BRASS	NICKEL PLATING										
NO.		MATERIAL		FINISH . REMARKS		NO.		MATERIAL		FINISH . REMARKS						
UNITS mm				SCALE 2 : 1				COUNT	DESCRIPTION OF REVISIONS		DESIGNED		CHECKED		DATE	
 HIROSE ELECTRIC CO., LTD.		APPROVED : HT. YAMAGUCHI				18.08.02		DRAWING NO.		EDC-016701-72-23						
		CHECKED : HT. YAMAGUCHI				18.08.02		PART NO.		HIF3-20CV<72>						
		DESIGNED : TM. NAKAJIMA				18.08.01		CODE NO.		CL562-0201-0-72						
		DRAWN : MK. OKI				18.07.31										
						