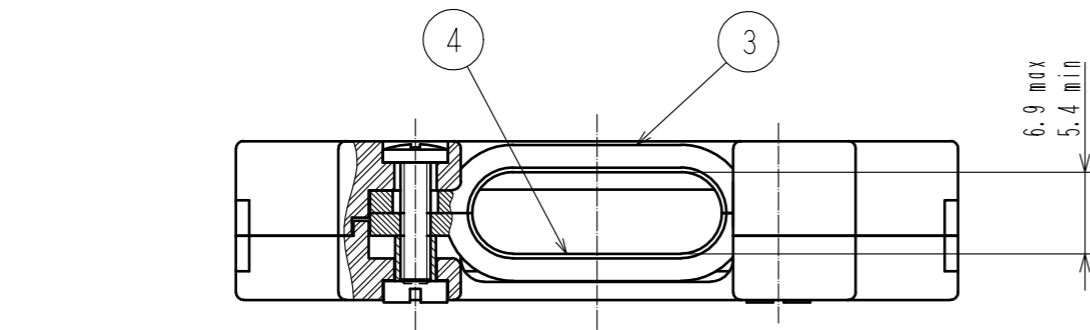
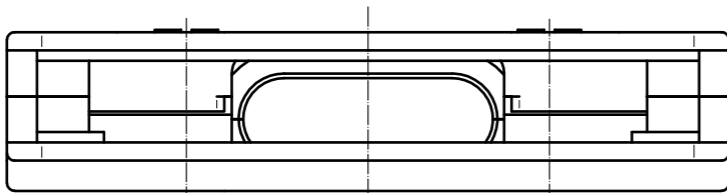
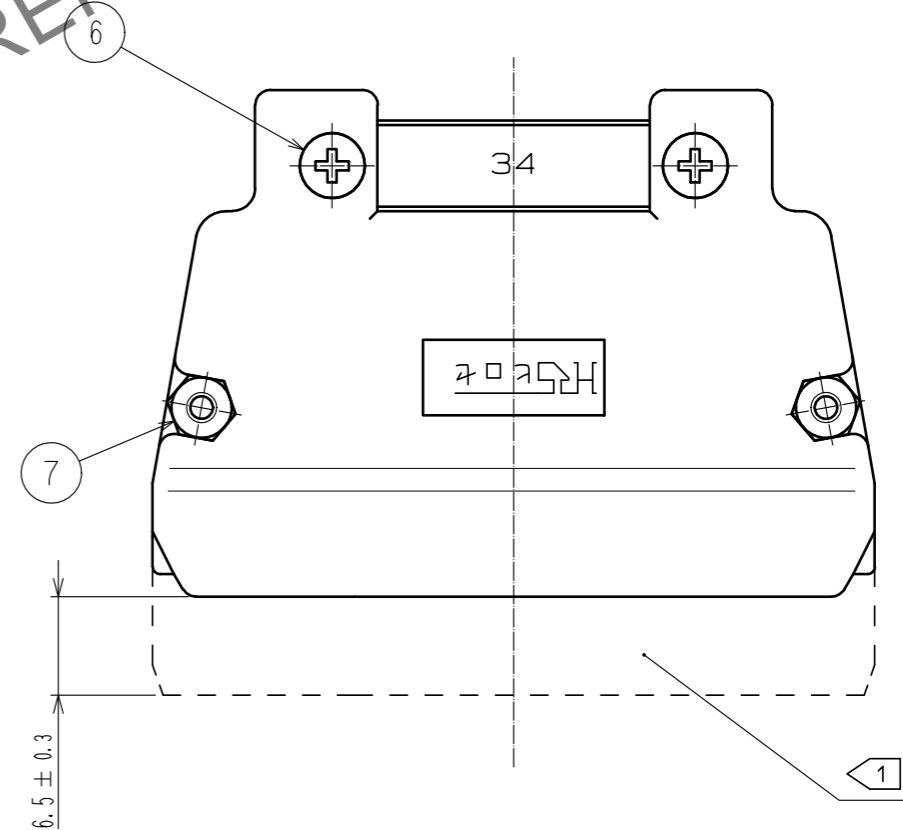
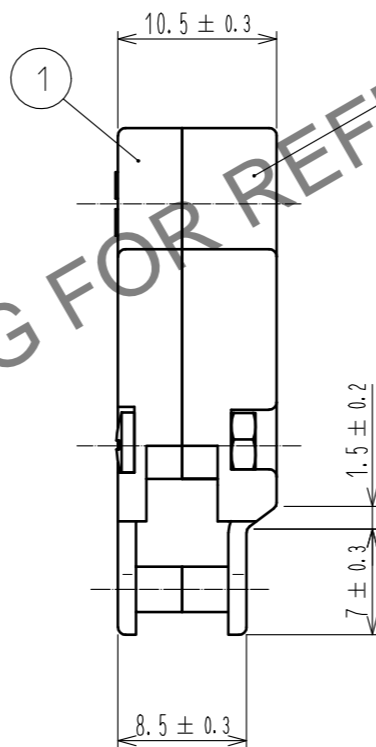
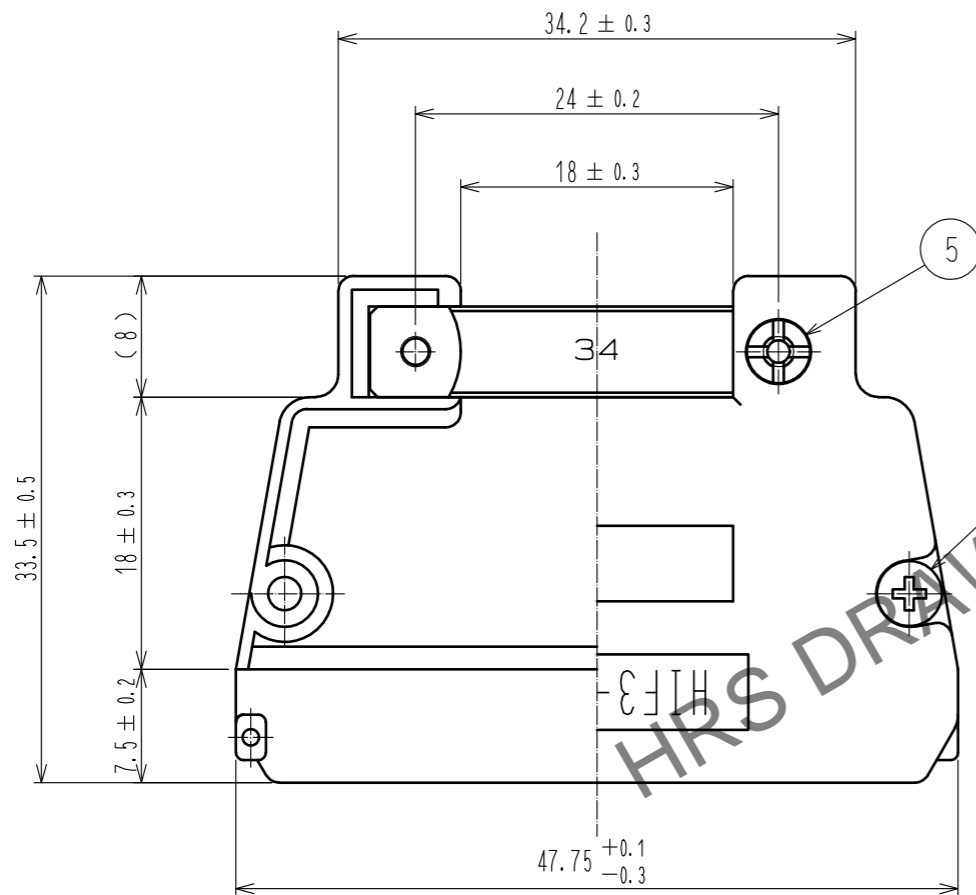


May.1.2024 Copyright 2024 HIROSE ELECTRIC CO., LTD. All Rights Reserved.
In case of consideration for using Automotive equipment / device which demand high reliability, kindly contact our sales window correspondents.



- Notes
- 1 Applicable housing to the Cover Case.
HIF3BA-34D-2.54C
 - 2 Pack part 3-7 in one bag. The bag, case(A) and (B) are to be packed together.
 - 3 The dimensions in parentheses are for reference.
 - 4 This product does not accept a pin header with F type lock as a corresponding connector.



4	STEEL	NICKEL PLATING	7	BRASS	NICKEL PLATING. M2 NUT
3	STEEL	NICKEL PLATING	6	BRASS	NICKEL PLATING M2. L=8. SELF-BINDING SCREW
2	ABS	BLACK UL94V-0	5	BRASS	NICKEL PLATING
1	ABS	BLACK UL94V-0			
NO.	MATERIAL	FINISH . REMARKS	NO.	MATERIAL	FINISH . REMARKS
UNITS mm		SCALE 2 : 1	COUNT 	DESCRIPTION OF REVISIONS DIS-F-00003539	DESIGNED TM. NAKAJIMA
HIROSE ELECTRIC CO., LTD.		APPROVED : HS. OKAWA	12. 09. 11	DRAWING NO.	EDC3-016704-72
		CHECKED : HT. YAMAGUCHI	12. 09. 11	PART NO.	HIF3-34CV<72>
		DESIGNED : KJ. NISHIWAKI	12. 09. 11	CODE NO.	CL562-0204-8-72
		DRAWN : CR. TAKESHIMA	12. 09. 11		
		DATE	18. 08. 02		
		CHECKED	HT. YAMAGUCHI		