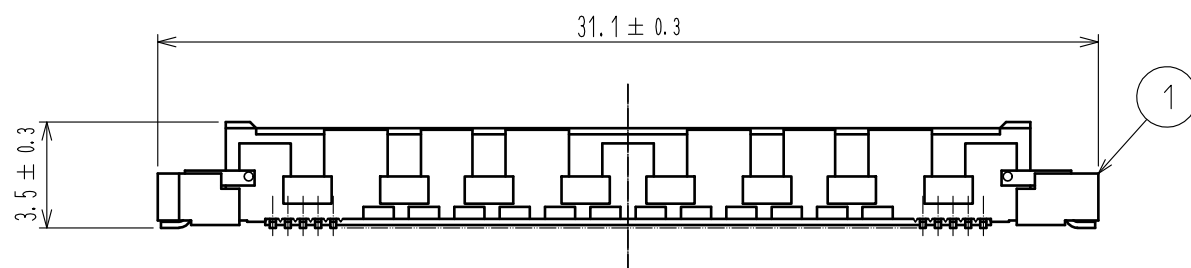
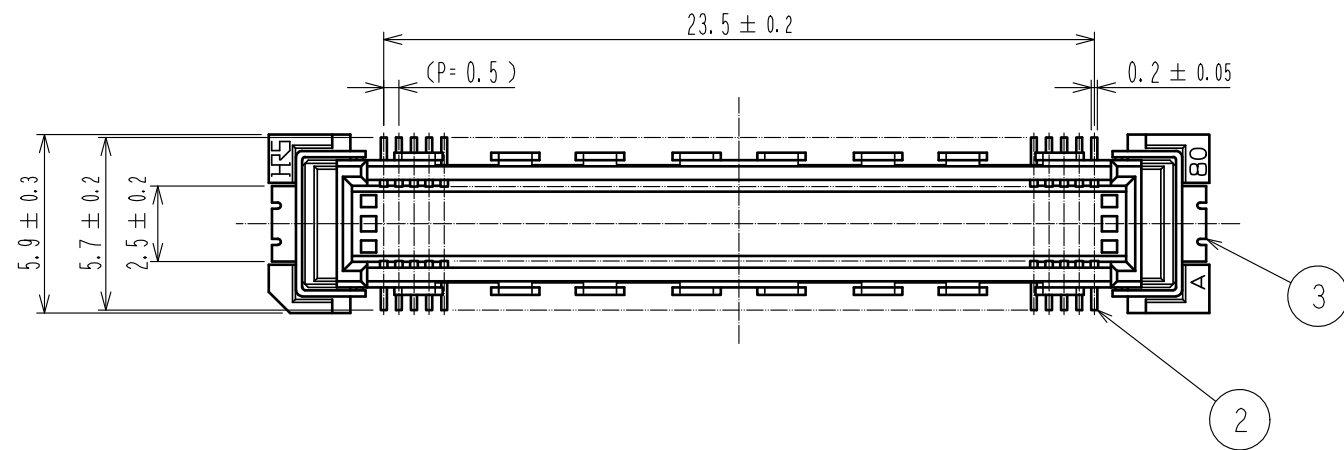
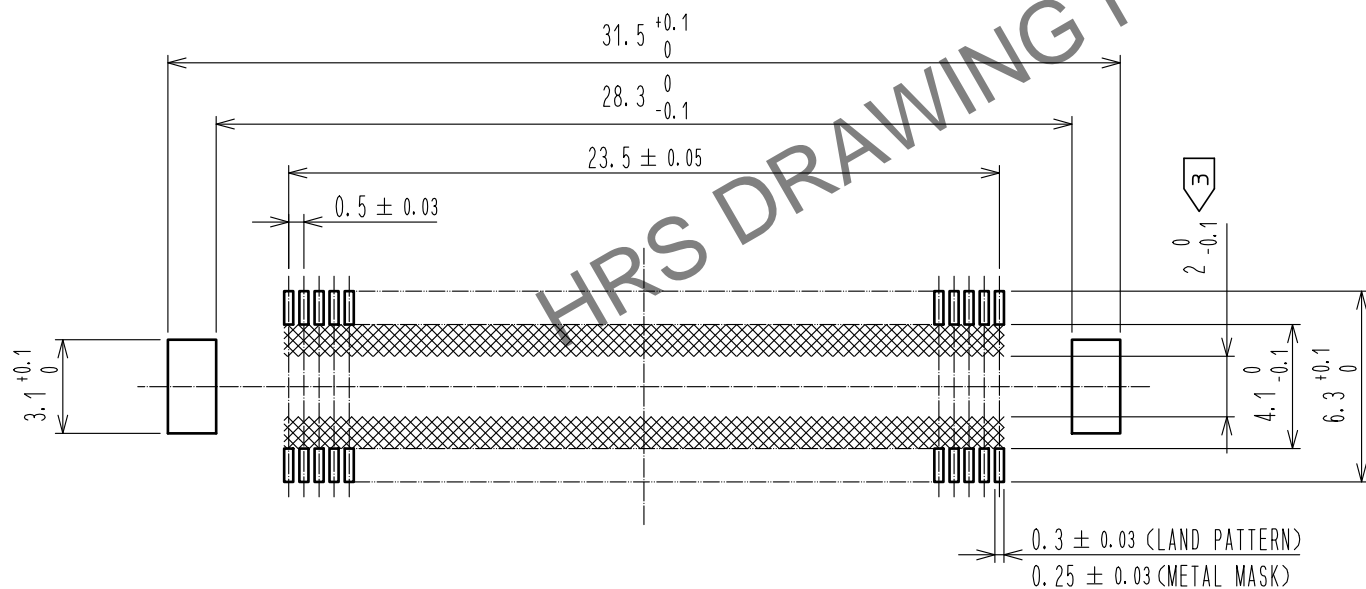


May.1.2024 Copyright 2024 HIROSE ELECTRIC CO., LTD. All Rights Reserved.
In case of consideration for using Automotive equipment / device which demand high reliability, kindly contact our sales window correspondents.

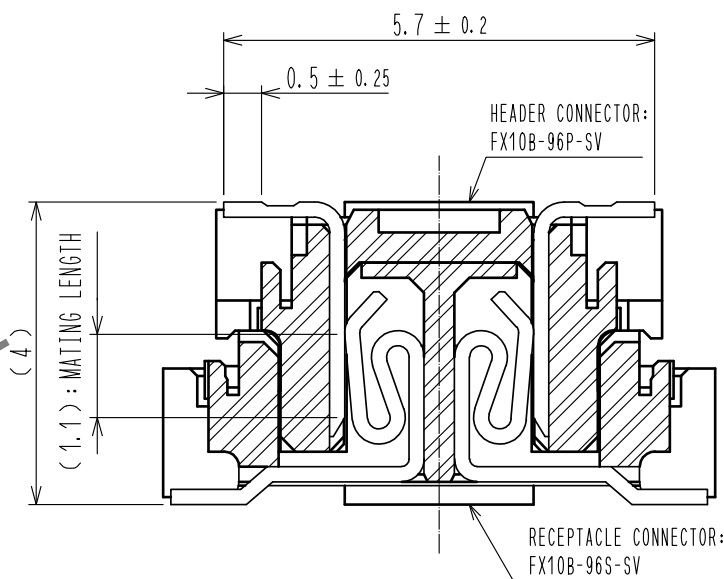


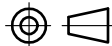


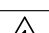
RECOMMENDED LAND PATTERN DIMENSION OF PCB
(RECOMMENDED METAL MASK THICKNESS : 0.15mm)



- NOTES
- 1 SMT LEAD-COPLANARITY : 0.1 MAX.
 - 2 THIS PRODUCT HAS NO POLARITY TO PATTERN FOR MOUNTING.
 - 3 MAKE SURE WIDTH OF PATTERN IS WITHIN THAT OF LAND, OR LEAD MAY TOUCH PATTERN. (THIS APPLIES TO HATCHED AREA.)
 - 4 EMBOSS CARRIER TAPE PACKAGE IS APPLIED ON THIS PRODUCT. PLEASE REFER TO THE SHEET 2/2 FOR THE DETAILS.
 - 5 THE DIMENSIONS IN PARENTHESES ARE FOR REFERENCE.

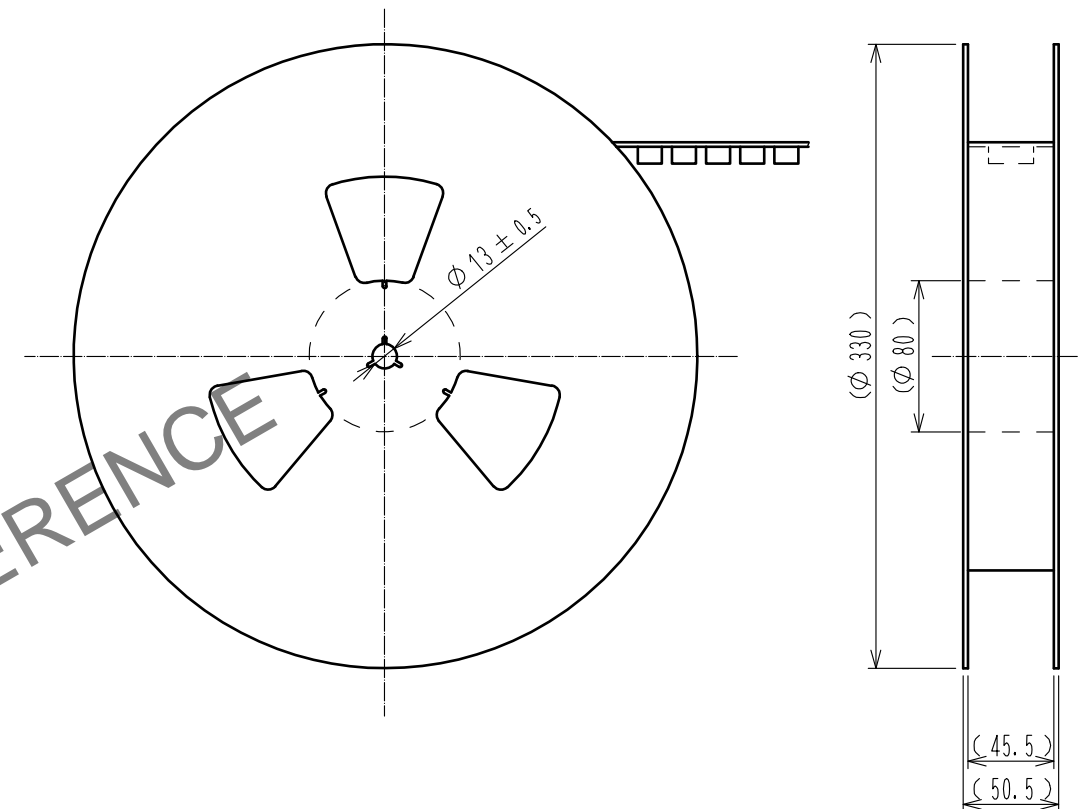
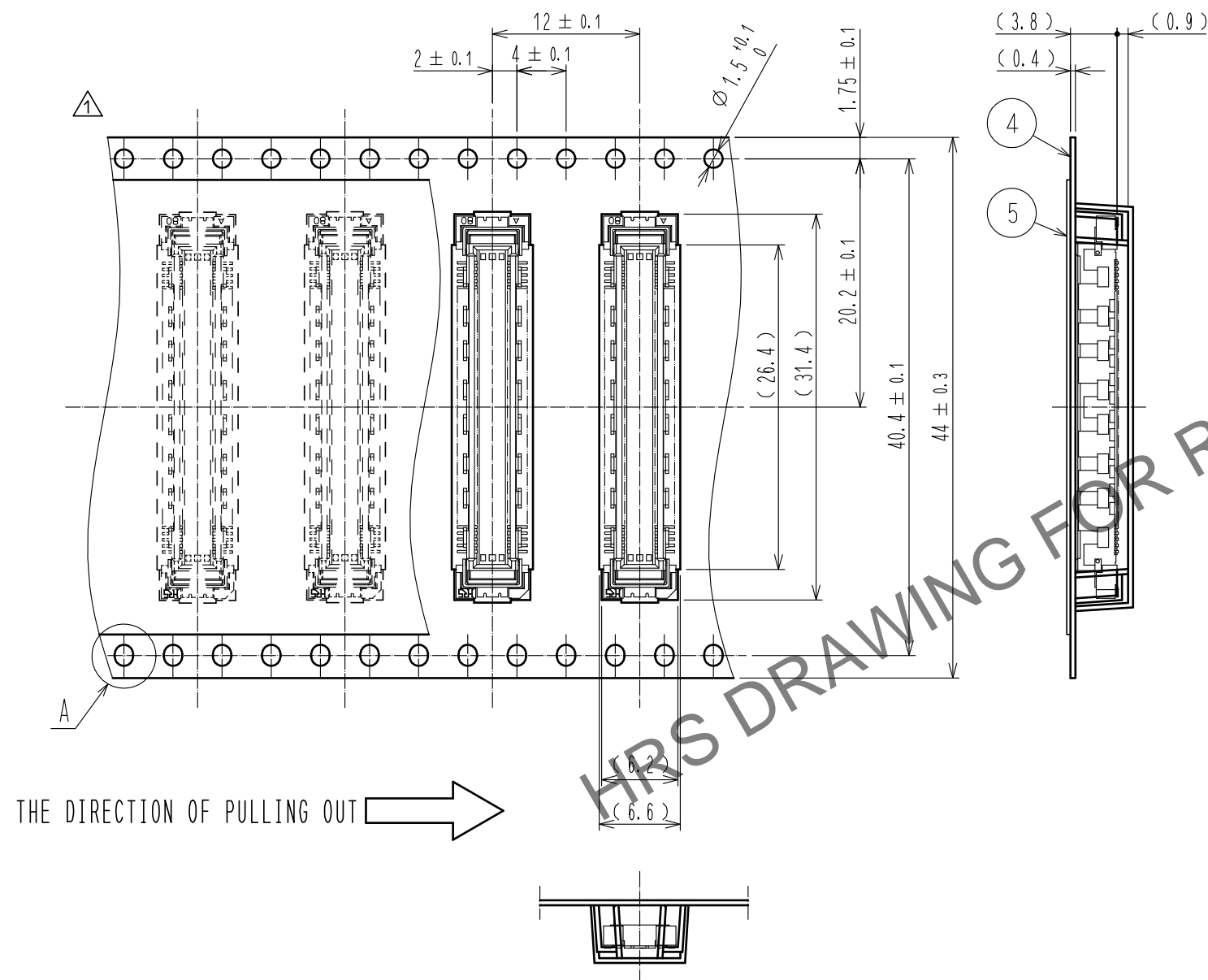
CROSS CUT SECTION (10:1)



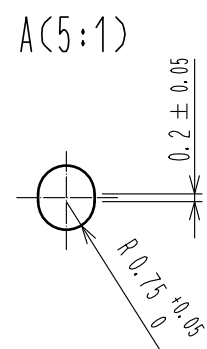
3	PHOSPHOR BRONZE	TIN-PLATING							
2	PHOSPHOR BRONZE	CONTACT AREA : GOLD 0.1μm min.							
		LEAD AREA : TIN-PLATING 1μm min.							
		UNDER PLATING : NICKEL 1μm min.	5	POLYESTER	TOP COVER TAPE				
1	LCP	BEIGE	4	POLYSTYRENE	EMBOSSED CARRIER TAPE				
NO.	MATERIAL	FINISH . REMARKS		NO.	MATERIAL	FINISH . REMARKS			
UNITS mm		SCALE 4 : 1		COUNT 1	DESCRIPTION OF REVISIONS DIS-F-00015231		DESIGNED SY. KUDO	CHECKED HT. YAMAGUCHI	DATE 20220908
 HIROSE ELECTRIC CO., LTD.		APPROVED : HT. YAMAGUCHI	20100729		DRAWING NO. EDC-151956-91-21				
		CHECKED : HT. YAMAGUCHI	20100729		PART NO. FX10B-96P-SV(91)				
		DESIGNED : SY. KAMIGA	20100729		CODE NO. CL0570-0051-3-91				
		DRAWN : HK. SUNADORI	20100728		 1/1				

DRAWING FOR PACKING(2:1)

REELED DIMENSION (Free)



NOTES 6 1 REEL : 1000 CONNECTORS.
7 MINIMUM 10 COMPARTMENTS FROM BOTH REEL ENDS REMAIN EMPTY.
8 THIS PRODUCT HAS NO POLARITY TO TAPE AND REEL PACKAGING.
9 THE DIMENSIONS IN PARENTHESES ARE FOR REFERENCE.



HRS	DRAWING NO.	EDC-151956-91-21	
	PART NO.	FX10B-96P-SV(91)	
	CODE NO.	CL0570-0051-3-91	<div style="display: flex; align-items: center;"> <div style="border: 1px solid black; padding: 2px; margin-right: 5px;">1</div> <div style="border: 1px solid black; padding: 2px;">2/2</div> </div>