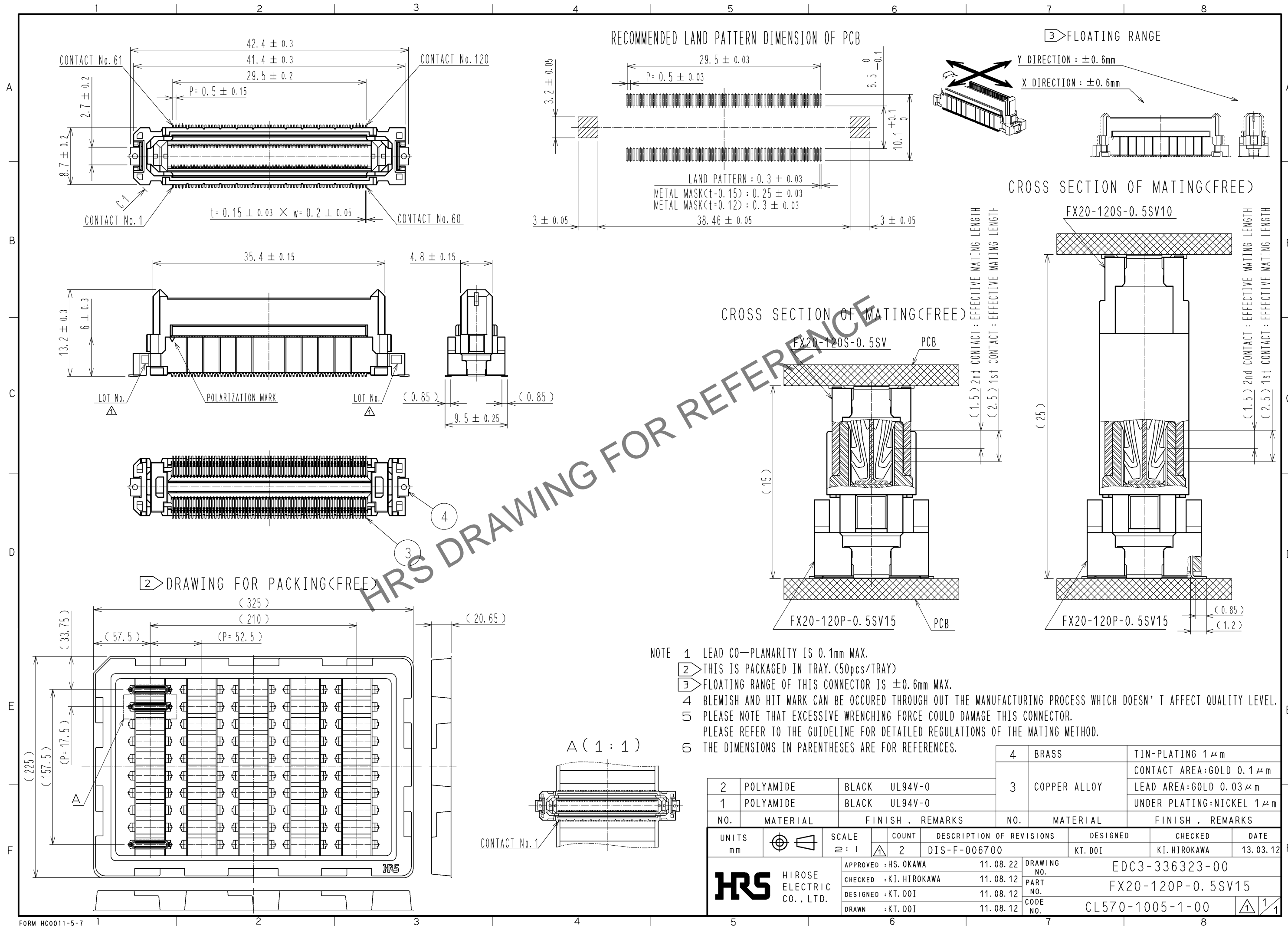


Sep.1.2024 Copyright 2024 HIROSE ELECTRIC CO., LTD. All Rights Reserved.
In case of consideration for using Automotive equipment / device which demand high reliability, kindly contact our sales window correspondents.



- NOTE
- 1 LEAD CO-PLANARITY IS 0.1mm MAX.
 - 2 THIS IS PACKAGED IN TRAY. (50pcs/TRAY)
 - 3 FLOATING RANGE OF THIS CONNECTOR IS ±0.6mm MAX.
 - 4 BLEMISH AND HIT MARK CAN BE OCCURED THROUGH OUT THE MANUFACTURING PROCESS WHICH DOESN' T AFFECT QUALITY LEVEL.
 - 5 PLEASE NOTE THAT EXCESSIVE WRENCHING FORCE COULD DAMAGE THIS CONNECTOR. PLEASE REFER TO THE GUIDELINE FOR DETAILED REGULATIONS OF THE MATING METHOD.
 - 6 THE DIMENSIONS IN PARENTHESES ARE FOR REFERENCES.

| | | | | | | |
|-------|-----------|--------|---------|-------|--------------|---|
| 2 | POLYAMIDE | BLACK | UL94V-0 | 4 | BRASS | TIN-PLATING 1 μm |
| 1 | POLYAMIDE | BLACK | UL94V-0 | 3 | COPPER ALLOY | CONTACT AREA:GOLD 0.1 μm LEAD AREA:GOLD 0.03 μm UNDER PLATING:NICKEL 1 μm |
| NO. | MATERIAL | FINISH | REMARKS | NO. | MATERIAL | FINISH . REMARKS |
| UNITS | mm | SCALE | 2:1 | COUNT | 2 | DESCRIPTION OF REVISIONS |
| | | | | | | DESIGNED |
| | | | | | | CHECKED |
| | | | | | | DATE |
| | | | | | | KT. DOI |
| | | | | | | KI. HIROKAWA |
| | | | | | | 13. 03. 12 |
| | | | | | | APPROVED : HS. OKAWA |
| | | | | | | 11. 08. 22 |
| | | | | | | CHECKED : KI. HIROKAWA |
| | | | | | | 11. 08. 12 |
| | | | | | | DESIGNED : KT. DOI |
| | | | | | | 11. 08. 12 |
| | | | | | | DRAWN : KT. DOI |
| | | | | | | 11. 08. 12 |
| | | | | | | DRAWING NO. |
| | | | | | | EDC3-336323-00 |
| | | | | | | PART NO. |
| | | | | | | FX20-120P-0.5SV15 |
| | | | | | | CODE NO. |
| | | | | | | CL570-1005-1-00 |
| | | | | | | 1/1 |