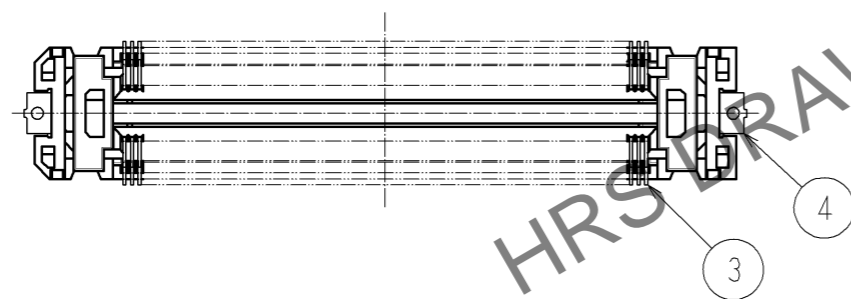
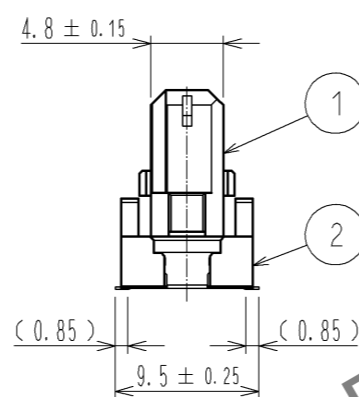
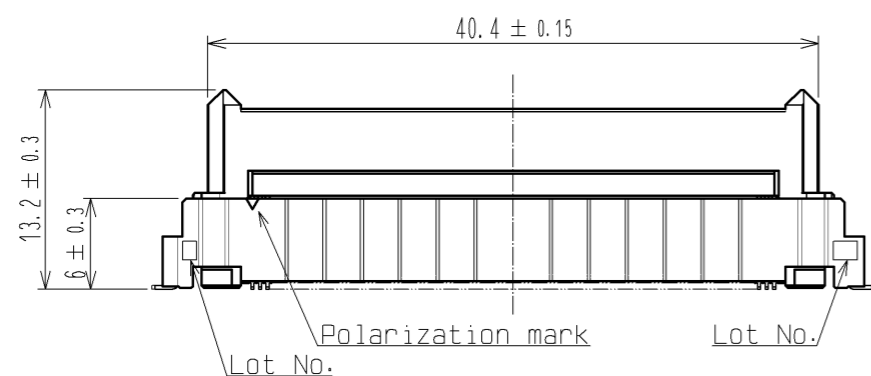
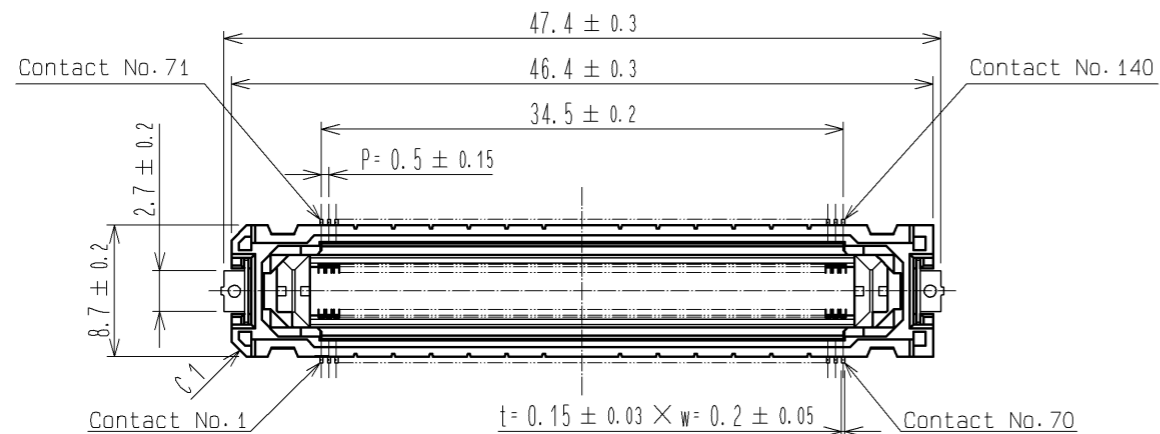
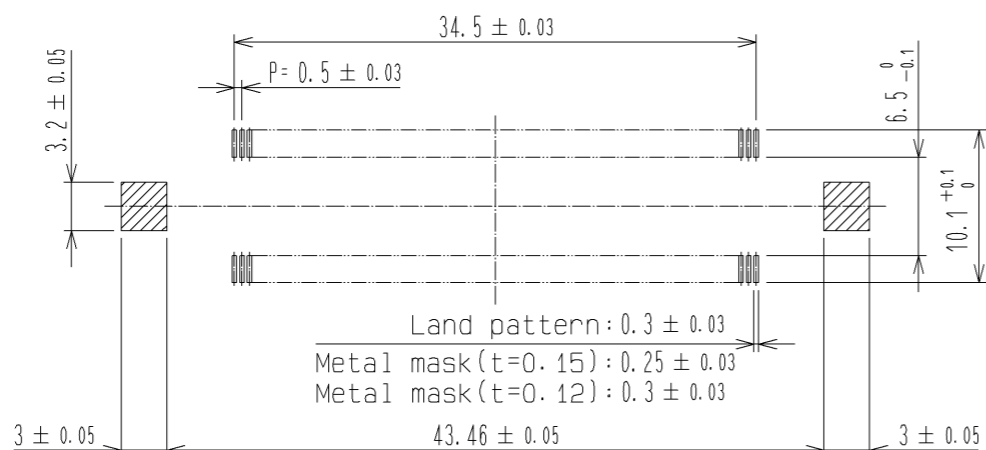


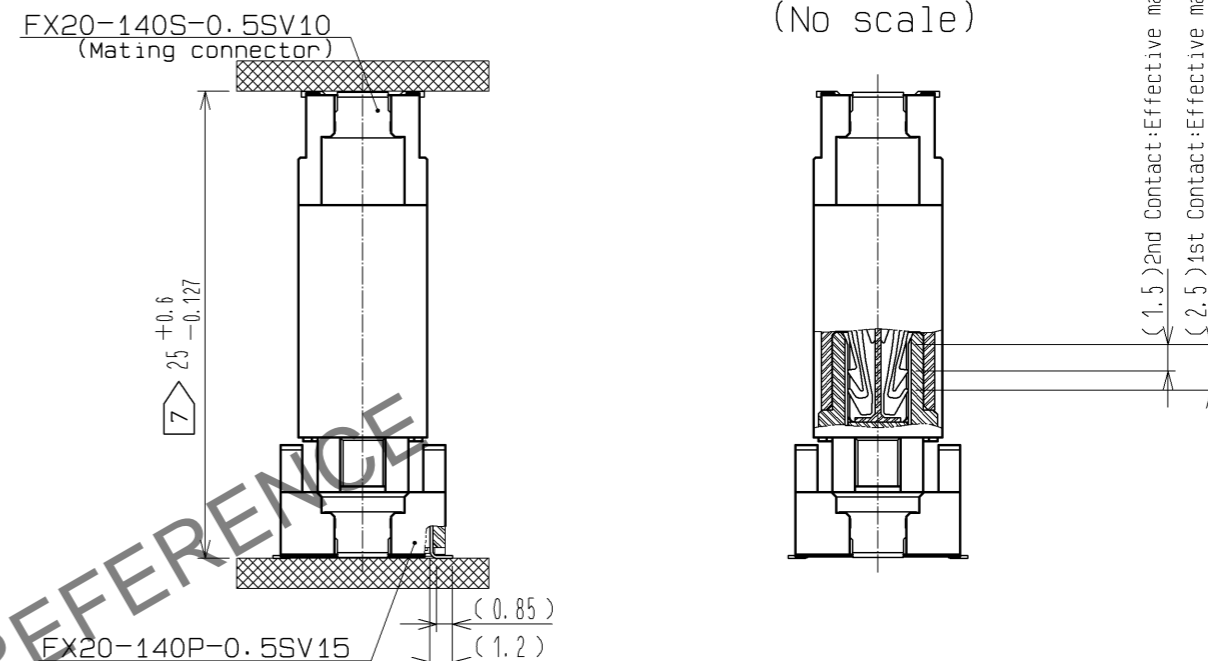
Jul.1.2024 Copyright 2024 HIROSE ELECTRIC CO., LTD. All Rights Reserved.  
In case of consideration for using Automotive equipment / device which demand high reliability, kindly contact our sales window correspondents.



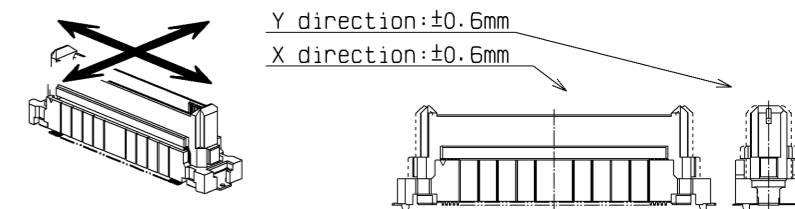
RECOMMENDED LAND PATTERN DIMENSION OF PCB



PCB DISTANCE(No scale) CROSS SECTION OF MATING  
(No scale)



FLOATING RANGE



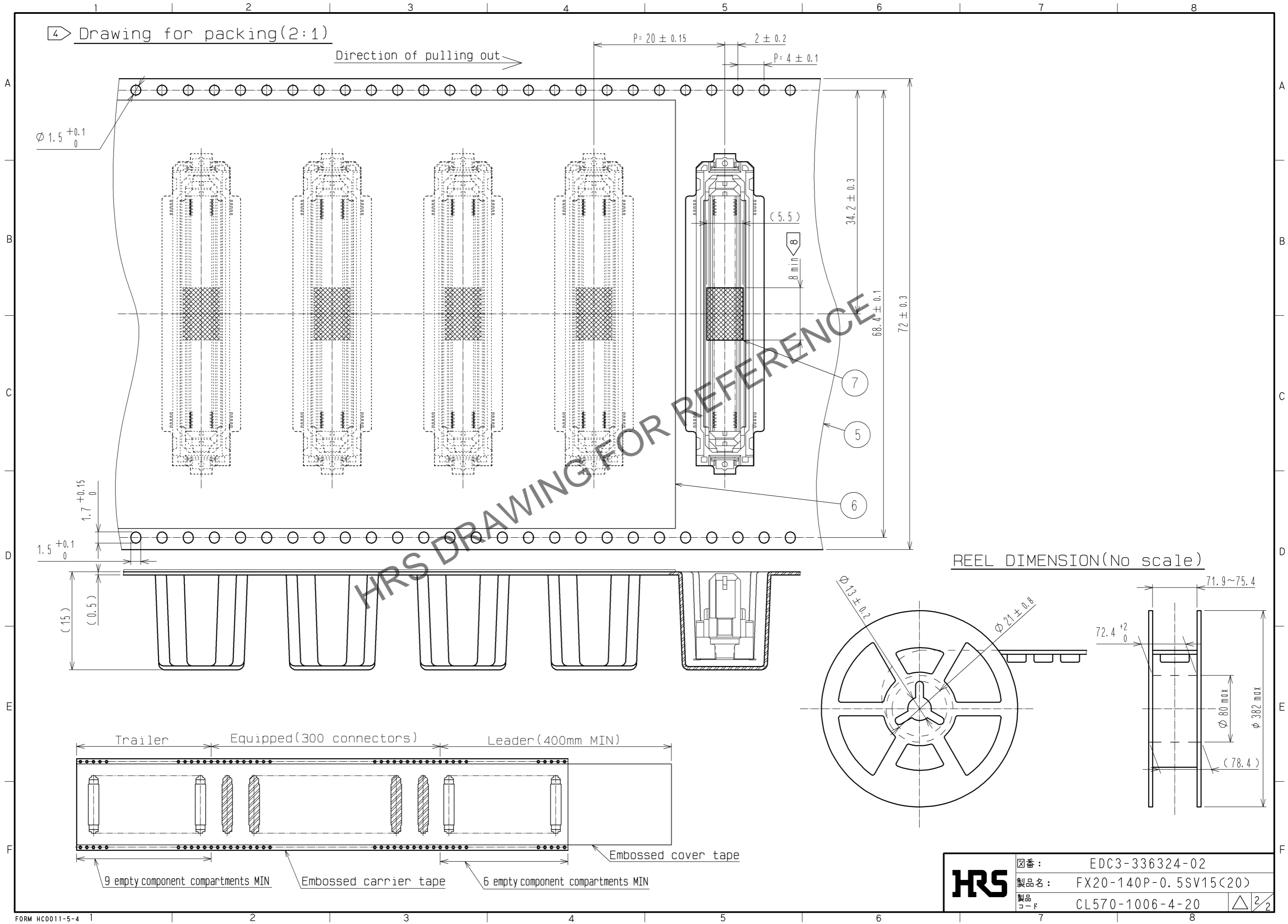
- 1 Lead CO-Planarity is 0.1mm MAX.
- 2 Floating range of this connector is ±0.6mm MAX.
- 3 Blemish and hit mark can be occurred through out the manufacturing process which dosen't affect quality level.
- 4 This is packaged in embossed carrier tape. (300pcs/RL)
- 5 Please note that excessive wrenching force could damage this connector. Please refer to the guideline for detailed regulations of the mating method.
- 6 The dimensions in parentheses are for references.
- 7 Please use the connectors within the specified PCB distance.
- 8 It shows the vacuum pickup area. Remove the mylar tape before mating connectors.

7	POLYIMIDE	CTAPE FOR VACUUM PICKUP)
6	POLYESTER	(EMBOSSD COVER TAPE)
5	POLYSTYRENE	(EMBOSSD CARRIER TAPE)
4	BRASS	TIN-PLATING 1 μm
3	COPPER ALLOY	CONTACT AREA:GOLD 0.1 μm LEAD AREA:GOLD 0.03 μm UNDER PLATING:NICKEL 1 μm
2	POLYAMIDE	BLACK UL94V-0
1	POLYAMIDE	BLACK UL94V-0
NO.	MATERIAL	FINISH . REMARKS

UNITS mm		SCALE 2 : 1	COUNT 	DESCRIPTION OF REVISIONS	DESIGNED	CHECKED	DATE
<b>HRS</b> HIROSE ELECTRIC CO., LTD.				APPROVED : HS. OKAWA 14.10.28	DRAWING NO. EDC3-336324-02		
				CHECKED : KN. SHIBUYA 14.10.27	PART NO. FX20-140P-0.5SV15(20)		
				DESIGNED : TS. OONO 14.10.27	CODE NO. CL570-1006-4-20		
				DRAWN : TS. OONO 14.10.27	1/2		

Jul.1.2024 Copyright 2024 HIROSE ELECTRIC CO., LTD. All Rights Reserved.  
 In case of consideration for using Automotive equipment / device which demand high reliability, kindly contact our sales window correspondents.

4 Drawing for packing(2:1)



HRS DRAWING FOR REFERENCE

REEL DIMENSION(No scale)

<b>HRS</b>	図番:	EDC3-336324-02	$\triangle$ 2/2
	製品名:	FX20-140P-0.5SV15<20>	
	製品コード:	CL570-1006-4-20	