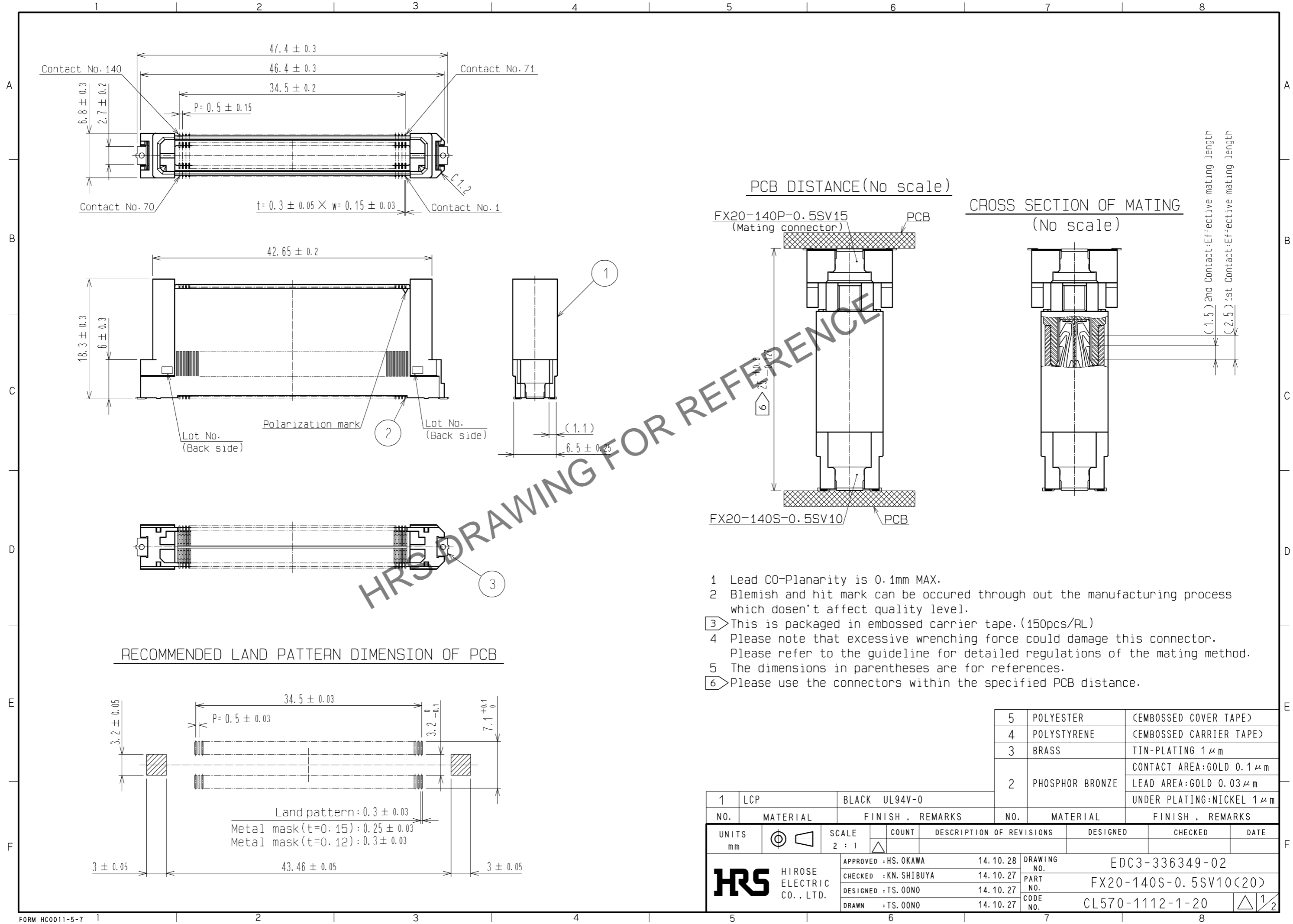


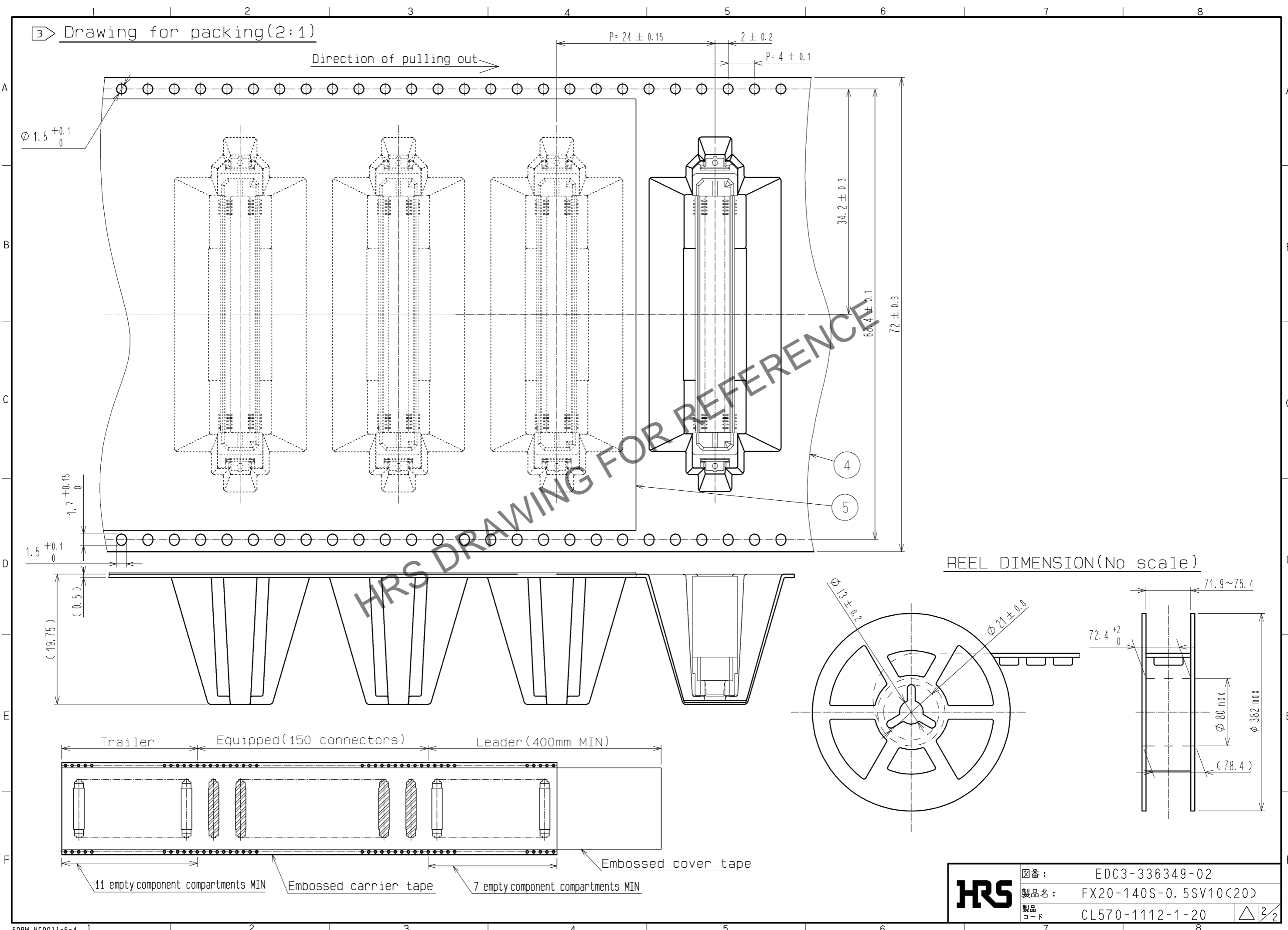
Jul.1.2024 Copyright 2024 HIROSE ELECTRIC CO., LTD. All Rights Reserved.
 In case of consideration for using Automotive equipment / device which demand high reliability, kindly contact our sales window correspondents.



- 1 Lead CO-Planarity is 0.1mm MAX.
- 2 Blemish and hit mark can be occurred through out the manufacturing process which dosen't affect quality level.
- 3 This is packaged in embossed carrier tape. (150pcs/RL)
- 4 Please note that excessive wrenching force could damage this connector. Please refer to the guideline for detailed regulations of the mating method.
- 5 The dimensions in parentheses are for references.
- 6 Please use the connectors within the specified PCB distance.

1	LCP	BLACK UL94V-0	5	POLYESTER	(EMBOSSED COVER TAPE)		
NO.	MATERIAL	FINISH . REMARKS	NO.	MATERIAL	FINISH . REMARKS		
			4	POLYSTYRENE	(EMBOSSED CARRIER TAPE)		
			3	BRASS	TIN-PLATING $1 \mu m$		
			2	PHOSPHOR BRONZE	CONTACT AREA:GOLD $0.1 \mu m$ LEAD AREA:GOLD $0.03 \mu m$ UNDER PLATING:NICKEL $1 \mu m$		
UNITS		SCALE	COUNT	DESCRIPTION OF REVISIONS	DESIGNED	CHECKED	DATE
mm		2 : 1	Δ				
HRS HIROSE ELECTRIC CO., LTD.		APPROVED : HS. OKAWA	14.10.28	DRAWING NO. EDC3-336349-02			
		CHECKED : KN. SHIBUYA	14.10.27	PART NO. FX20-140S-0.5SV10(20)			
		DESIGNED : TS. OONO	14.10.27	CODE NO. CL570-1112-1-20			
		DRAWN : TS. OONO	14.10.27			Δ 1/2	

Jul.1.2024 Copyright 2024 HIROSE ELECTRIC CO., LTD. All Rights Reserved.
 In case of consideration for using Automotive equipment / device which demand high reliability, kindly contact our sales window correspondents.



HRS	図番:	EDC3-336349-02	$\triangle \frac{2}{2}$
	製品名:	FX20-140S-0.5SV10(20)	
	製品コード:	CL570-1112-1-20	