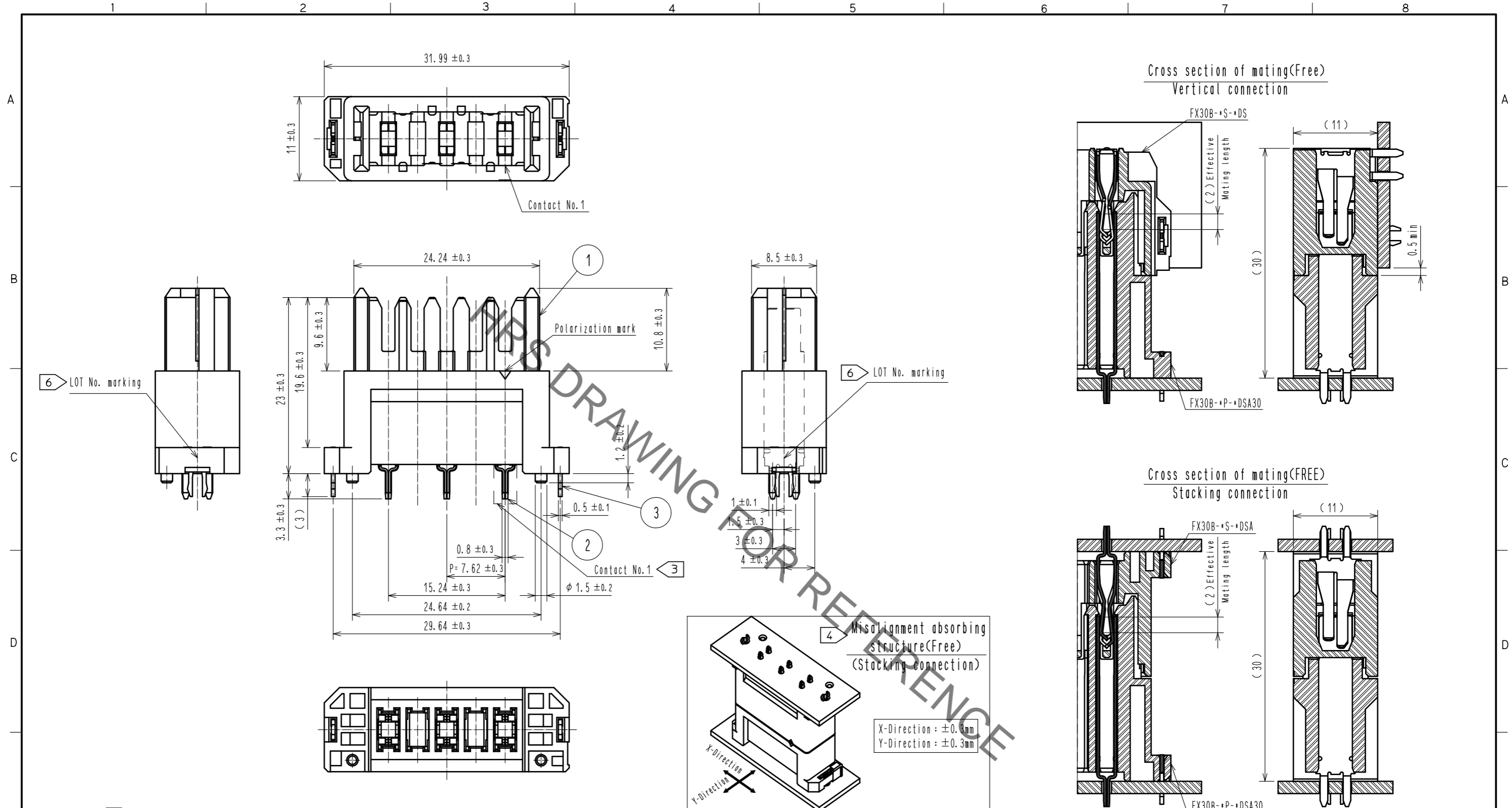
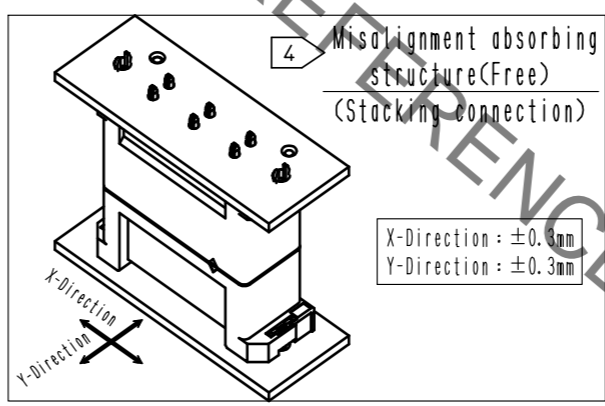


Dec.1.2021 Copyright 2021 HIROSE ELECTRIC CO., LTD. All Rights Reserved.
 In case of consideration for using Automotive equipment / device which demand high reliability, kindly contact our sales window correspondents.



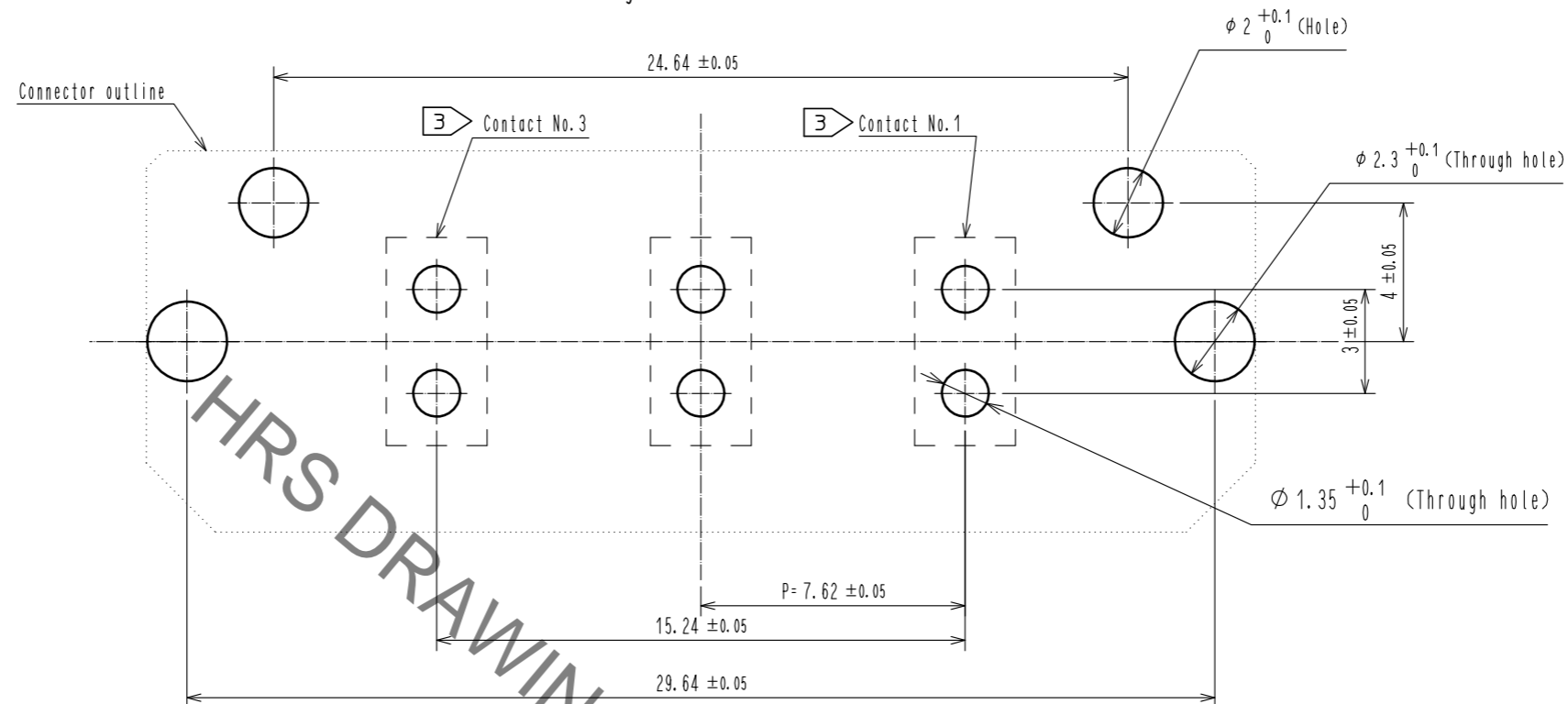
- Note
- ① This product is packaged in tray. (35pcs/tray)
 - ② Blemish and hit mark can be occurred through out the manufacturing process which doesn't affect quality level. Also, black spot could be observed on the surface of housing.
 - ③ For the contact No., adjacent two pairs of leads placed back-to-back (4 leads in total) Compose one line.
 - ④ Misalignment absorbing range: ±0.3mm max.
 - ⑤ The dimension in parentheses are for references.
 - ⑥ Lot No. is indicated at either one of the position as shown.
 - ⑦ ULC(File No. E52653)
 C-UL(File No. E52653)
 TÜV(Certificate No. R50275872) authorization article.



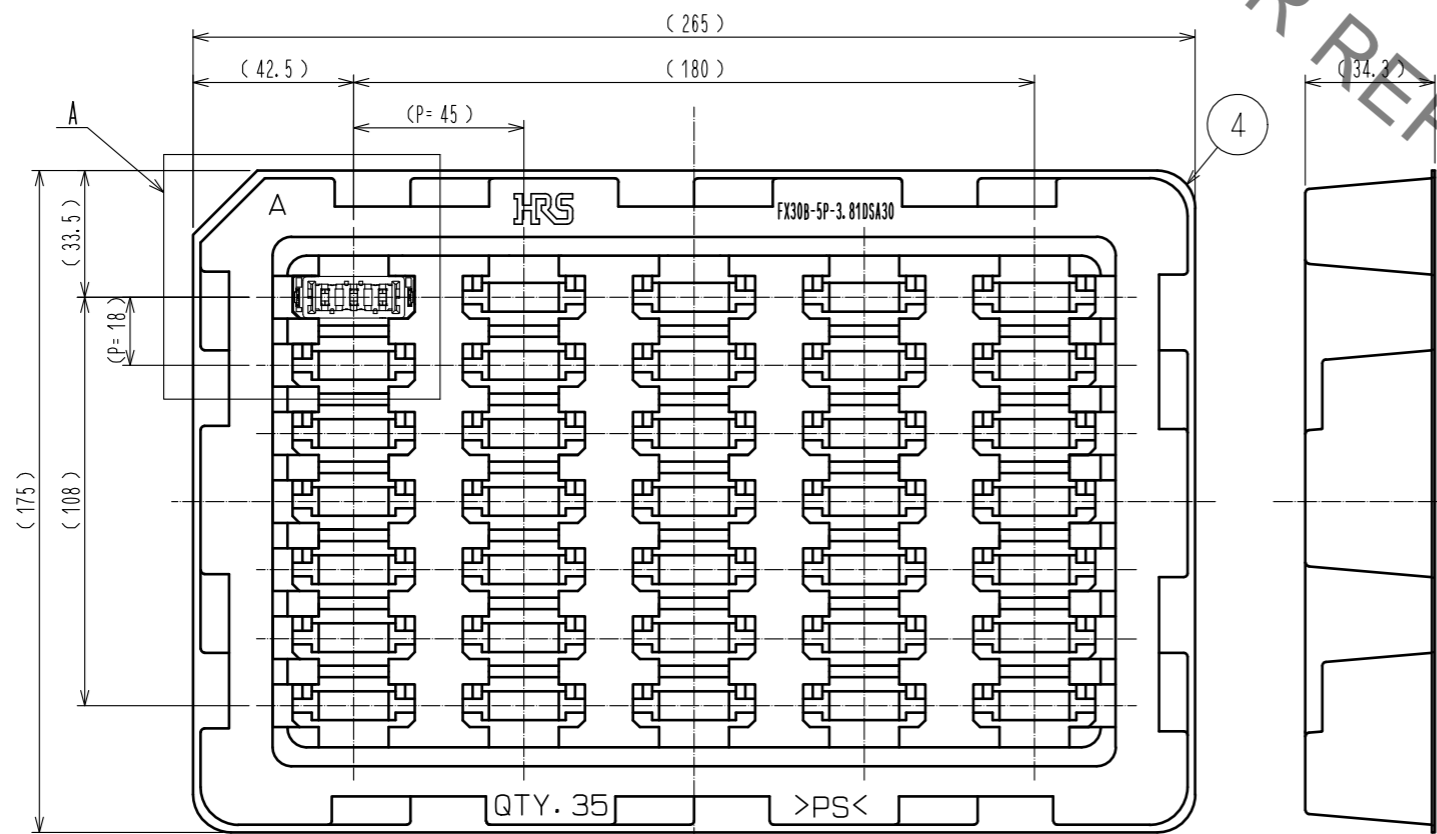
2	Copper alloy	Contact area:Gold-plating 0.1μm	4	Polystyrene	
		Lead area:Tin-plating 1.0μm			
		Under plating:Nickel 1.0μm	3	Phosphor bronze	Tin-plating 3.0μm
1	Polyamide	Black UL94V-0			Under plating:Nickel 1.0μm
NO.	MATERIAL	FINISH . REMARKS	NO.	MATERIAL	FINISH . REMARKS
UNITS	mm	SCALE	2 : 1	COUNT	1
		DESCRIPTION OF REVISIONS	DESIGNED	CHECKED	DATE
		DIS-F-00006019	AK. IWAHORI	HT. YAMAGUCHI	20200406
APPROVED : HS. OKAWA		20140912	DRAWING NO. EDC3-359162-00		
CHECKED : KN. SHIBUYA		20140912	PART NO. FX30B-3P-7. 62DSA30		
DESIGNED : DK. AIMOTO		20140912	CODE NO. CL570-3305-6-00		
DRAWN : DK. AIMOTO		20140912			

Dec.1.2021 Copyright 2021 HIROSE ELECTRIC CO., LTD. All Rights Reserved.
 In case of consideration for using Automotive equipment / device which demand high reliability, kindly contact our sales window correspondents.

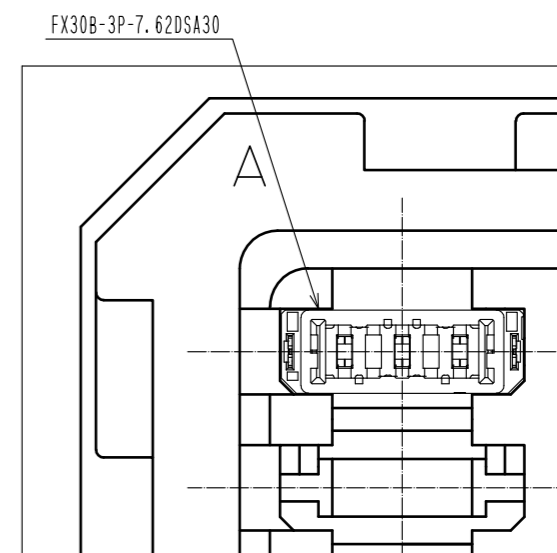
Recommended hole pattern dimension of PCB(5:1)
 (Connector mounting side, PCB thickness:t=1.6mm)



1 Drawing for packaging(1:2)



A(1:1)



HRS	DRAWING NO.	EDC3-359162-00	2/2
	PART NO.	FX30B-3P-7.62DSA30	
	CODE NO.	CL570-3305-6-00	