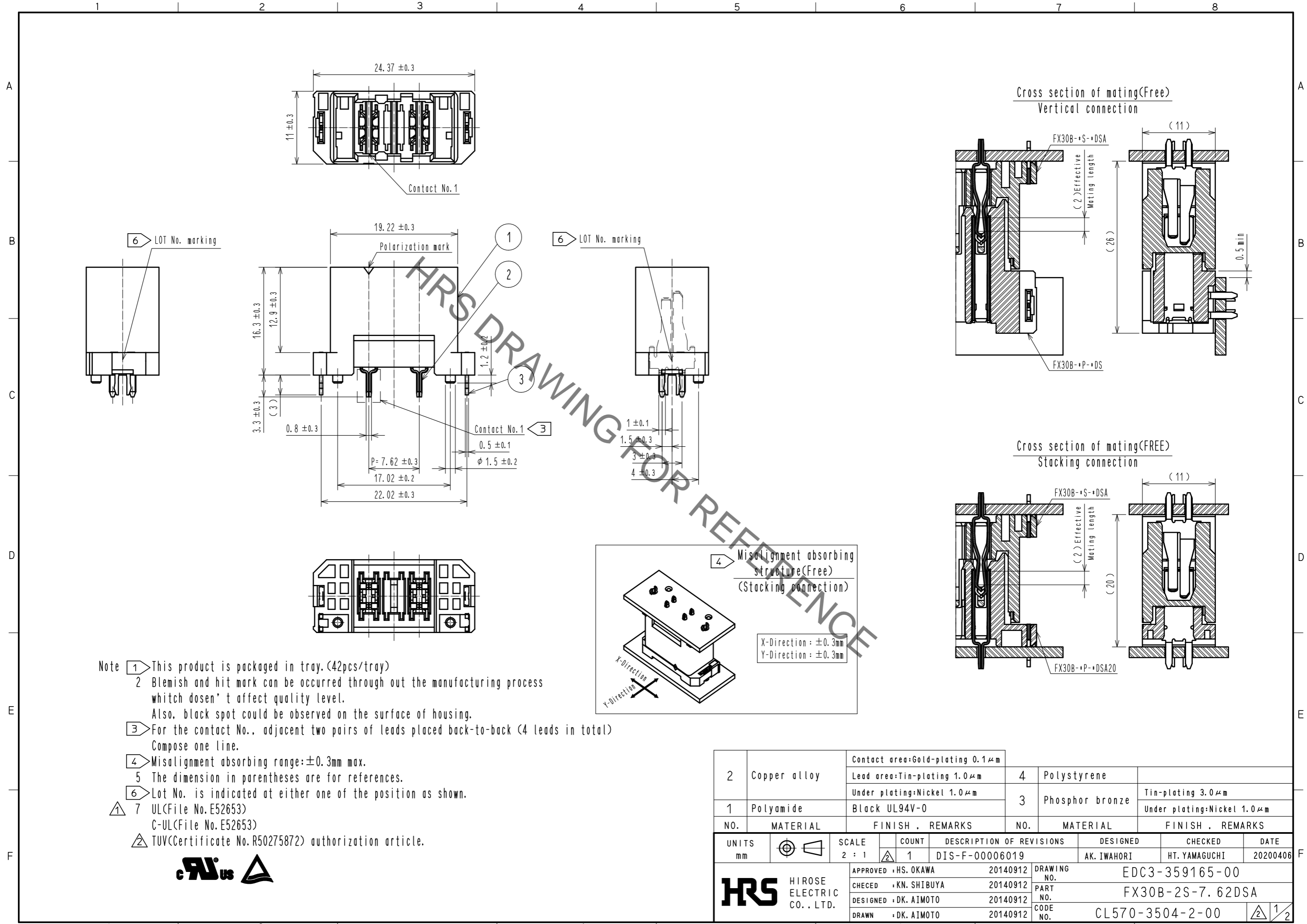


Jan.1.2022 Copyright 2022 HIROSE ELECTRIC CO., LTD. All Rights Reserved.
 In case of consideration for using Automotive equipment / device which demand high reliability, kindly contact our sales window correspondents.



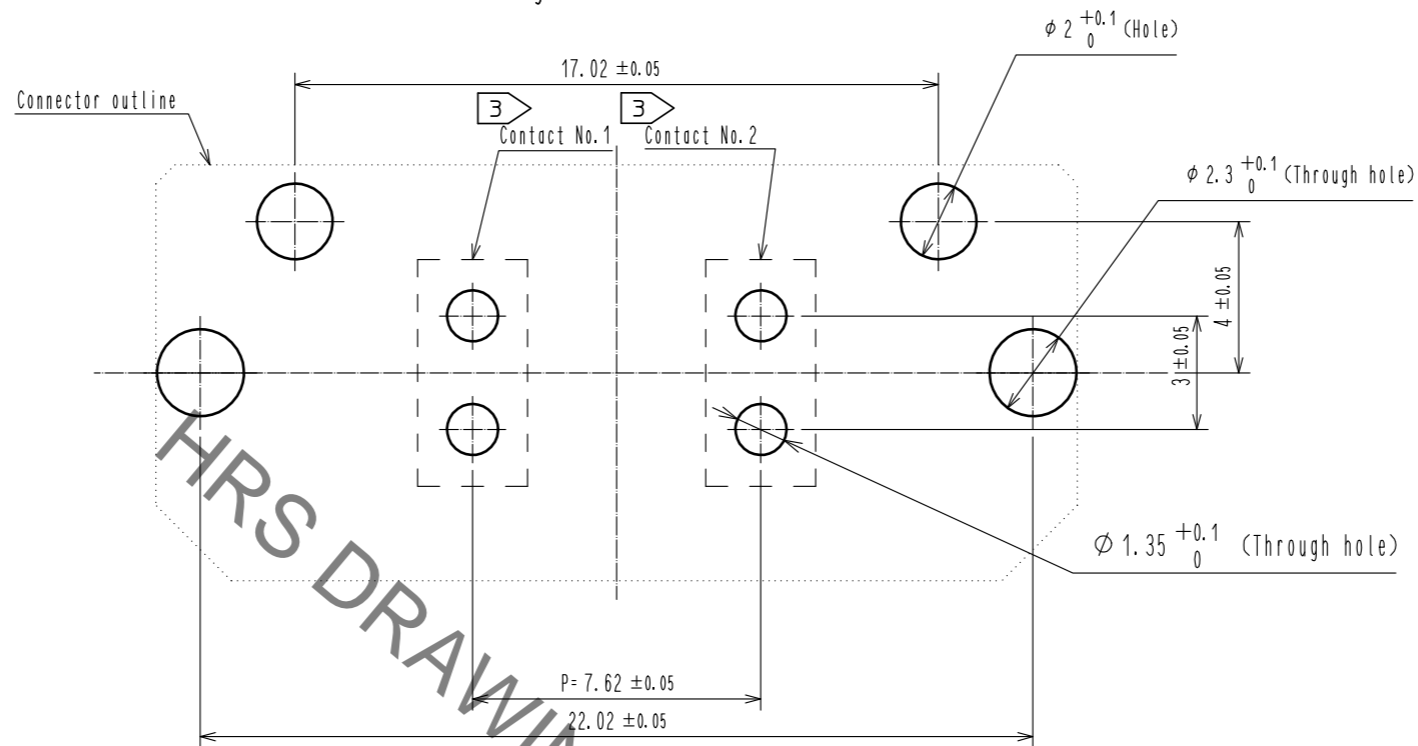
- Note
- 1 This product is packaged in tray. (42pcs/tray)
 - 2 Blemish and hit mark can be occurred through out the manufacturing process which doesn't affect quality level. Also, black spot could be observed on the surface of housing.
 - 3 For the contact No., adjacent two pairs of leads placed back-to-back (4 leads in total) Compose one line.
 - 4 Misalignment absorbing range: ±0.3mm max.
 - 5 The dimension in parentheses are for references.
 - 6 Lot No. is indicated at either one of the position as shown.
 - 7 UL (File No. E52653)
 C-UL (File No. E52653)
 TÜV (Certificate No. R50275872) authorization article.



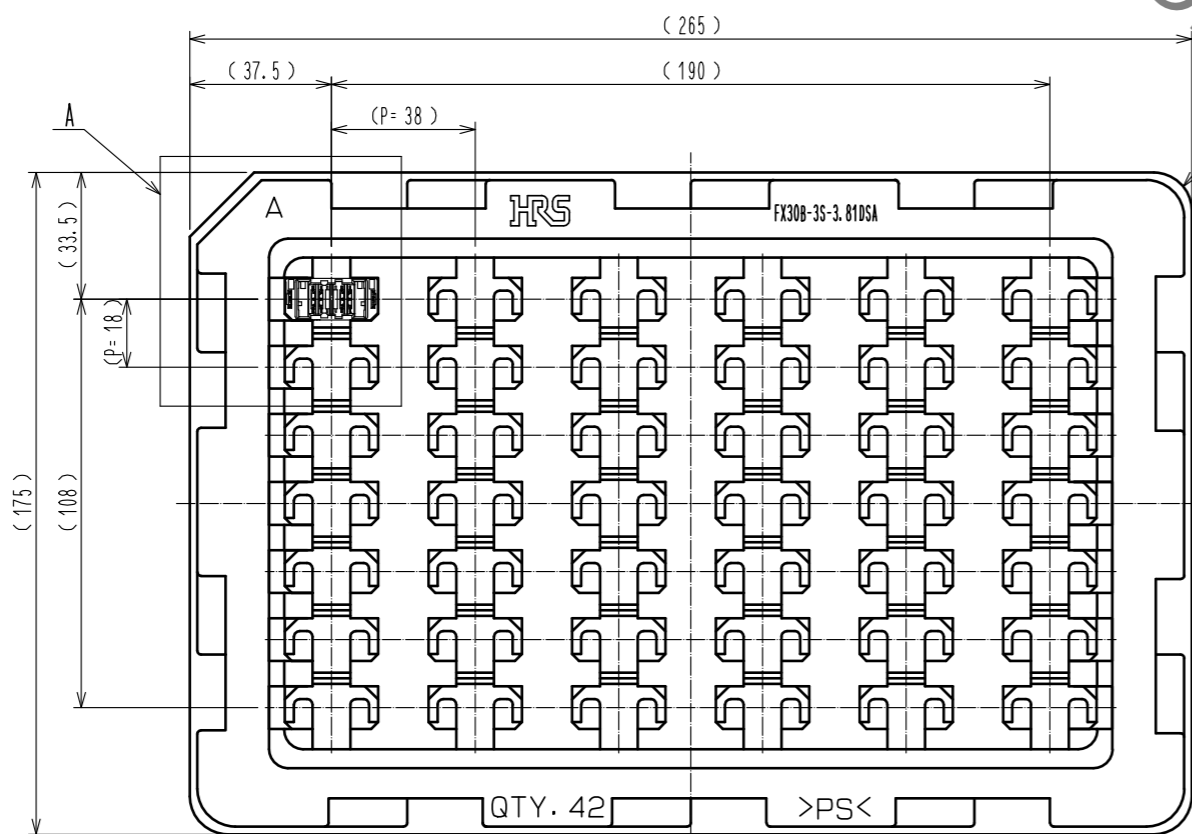
2	Copper alloy	Contact area: Gold-plating 0.1 μm Lead area: Tin-plating 1.0 μm Under plating: Nickel 1.0 μm	4	Polystyrene	Tin-plating 3.0 μm				
1	Polyamide	Black UL94V-0	3	Phosphor bronze	Under plating: Nickel 1.0 μm				
NO.	MATERIAL	FINISH . REMARKS	NO.	MATERIAL	FINISH . REMARKS				
UNITS	mm	SCALE	2 : 1	COUNT	1	DESCRIPTION OF REVISIONS	DESIGNED	CHECKED	DATE
						DIS-F-00006019	AK. IWAHORI	HT. YAMAGUCHI	20200406
APPROVED : HS. OKAWA			20140912			DRAWING NO. EDC3-359165-00			
CHECKED : KN. SHIBUYA			20140912			PART NO. FX30B-2S-7. 62DSA			
DESIGNED : DK. AIMOTO			20140912			CODE NO. CL570-3504-2-00			
DRAWN : DK. AIMOTO			20140912						

Jan.1.2022 Copyright 2022 HIROSE ELECTRIC CO., LTD. All Rights Reserved.
 In case of consideration for using Automotive equipment / device which demand high reliability, kindly contact our sales window correspondents.

Recommended hole pattern dimension of PCB(5:1)
 (Connector mounting side, PCB thickness:t=1.6mm)

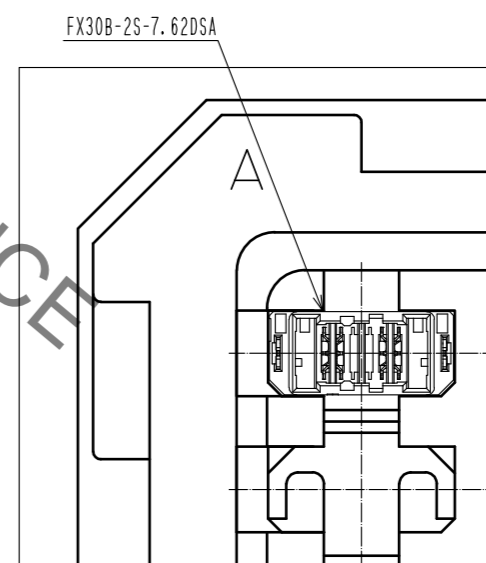


1 Drawing for packaging(1:2)



HRS DRAWING FOR REFERENCE

A(1:1)



HRS	DRAWING NO.	EDC3-359165-00
	PART NO.	FX30B-2S-7.62DSA
	CODE NO.	CL570-3504-2-00
		2/2