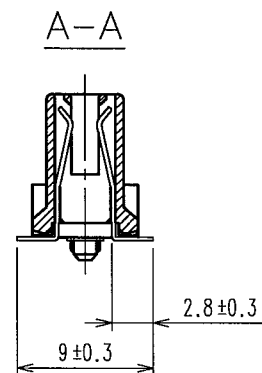
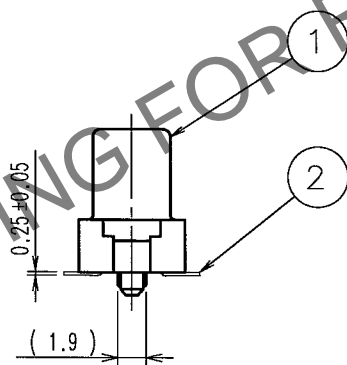
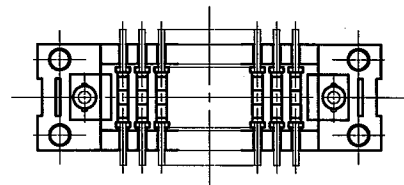
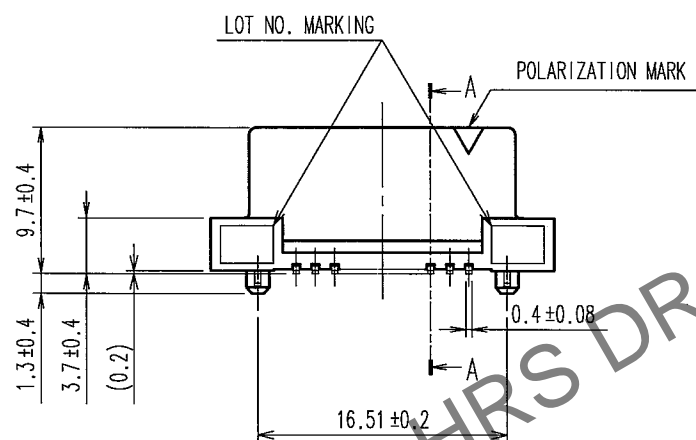
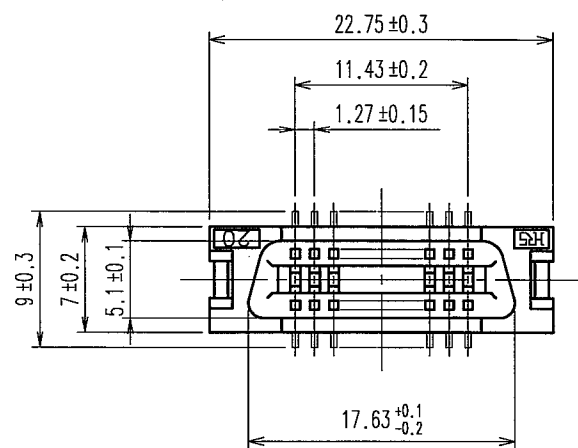
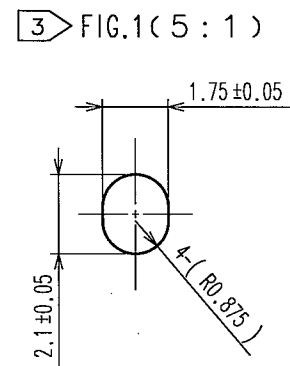
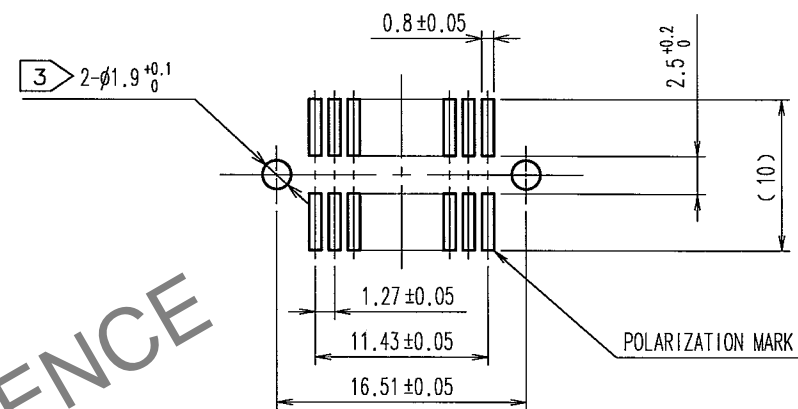


May.1.2024 Copyright 2024 HIROSE ELECTRIC CO., LTD. All Rights Reserved.  
of consideration for using Automotive equipment / device which demand high reliability, kindly contact our sales window correspondents.

TO  
PCK



# RECOMMENDED LAND PATTERN DIMENSION OF PCB (MOUNTING SIDE)



- NOTES 1 LEAD CO-PLANARITY SHALL BE 0.15 MAX.  
2 THE DIMENSIONS IN PARENTHESES ARE FOR REFERENCE.  
3 IN CASE OF THE AUTOMATED MOUNTING, RECOMMENDED HOLE DIAMETER OF BOSS IS SHOWN IN FIG.1.

1	PPS	LIGHT BROWN (UL94V-0)	2	PHOSPHOR BRONZE	CONTACT AREA:GOLD 0.2μ m min. LEAD AREA:TIN-PLATING 2μ m min. UNDER PLATING:NICKEL 1.5μ m min.
NO.	MATERIAL	FINISH, REMARKS	NO.	MATERIAL	FINISH, REMARKS
CODE NO.(OLD) CL	DRAWN A.SUZUKAWA 06.03.07		DESIGNED H.Nakamura 06.03.10	CHECKED M.Ogawa 06.03.10	APPROVED H.Okawa 06.03.13
SCALE 2 : 1	DRAWING NO. EDC3-082755-21		PART NO. FX2-20S-1.27SV(71)		
UNITS mm	HRS HIROSE ELECTRIC CO., LTD		CODE NO. CL572-2101-3-71		

1/1