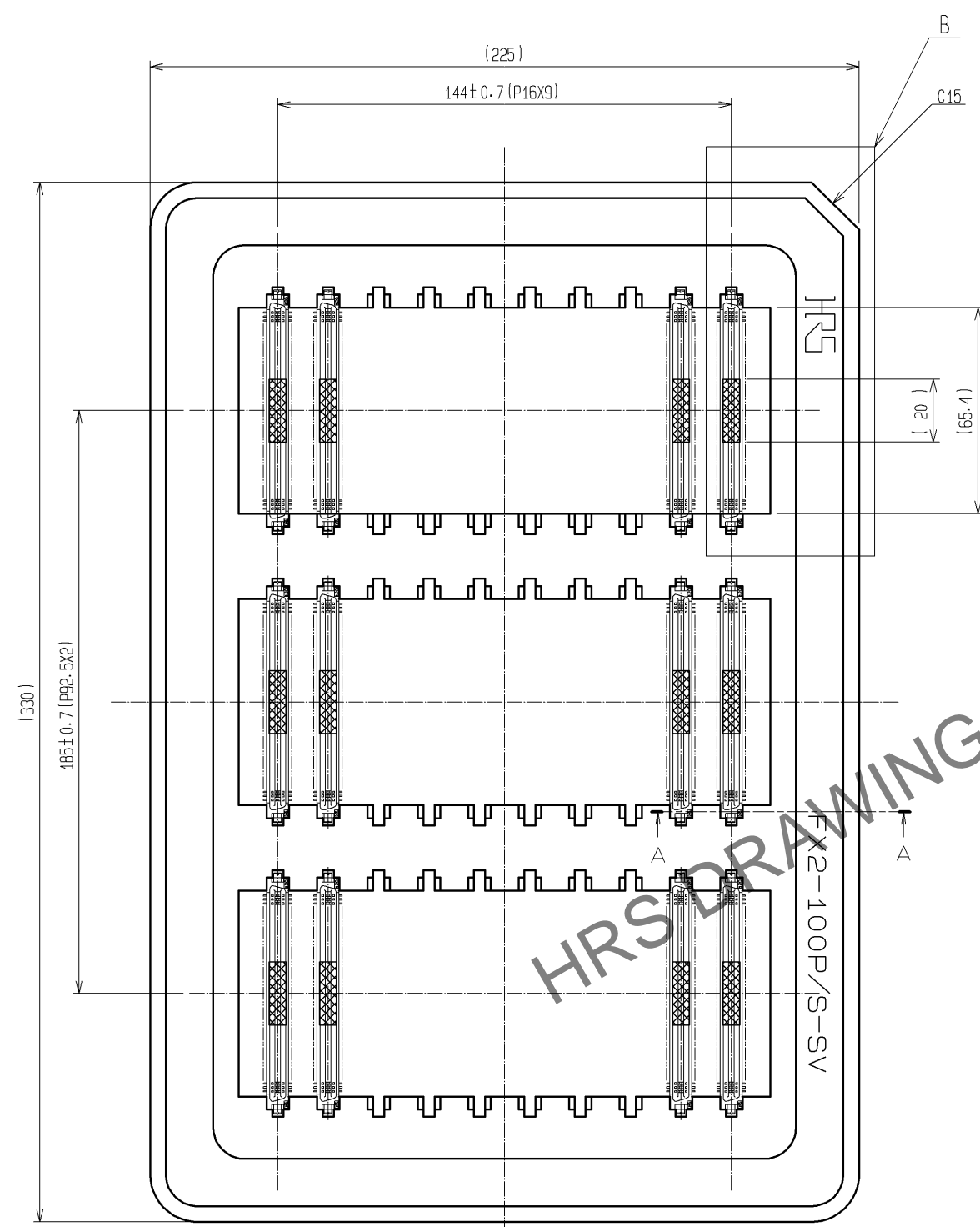


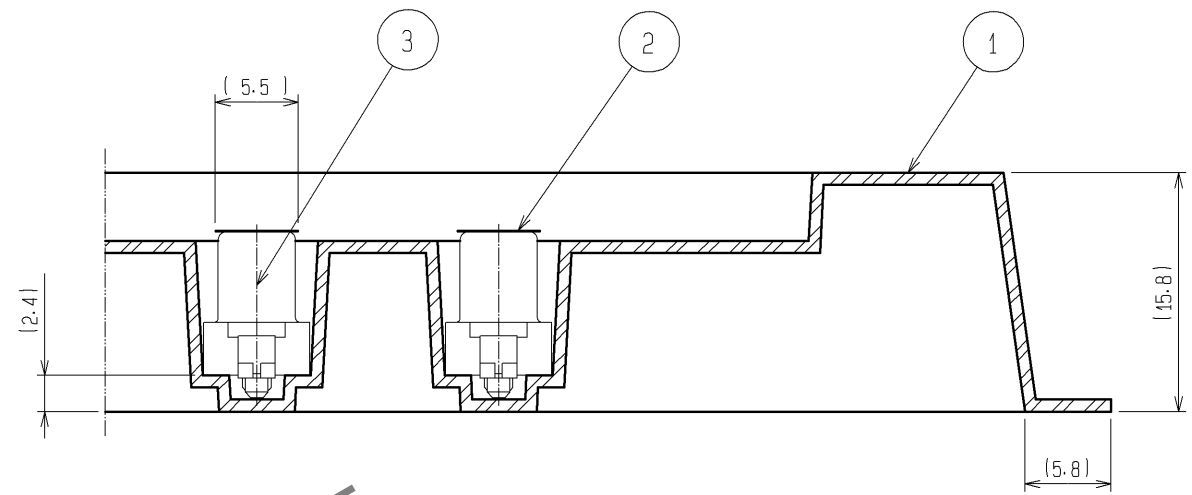


May.1.2024 Copyright 2024 HIROSE ELECTRIC CO., LTD. All Rights Reserved.
In case of consideration for using Automotive equipment / device which demand high reliability, kindly contact our sales window correspondents.

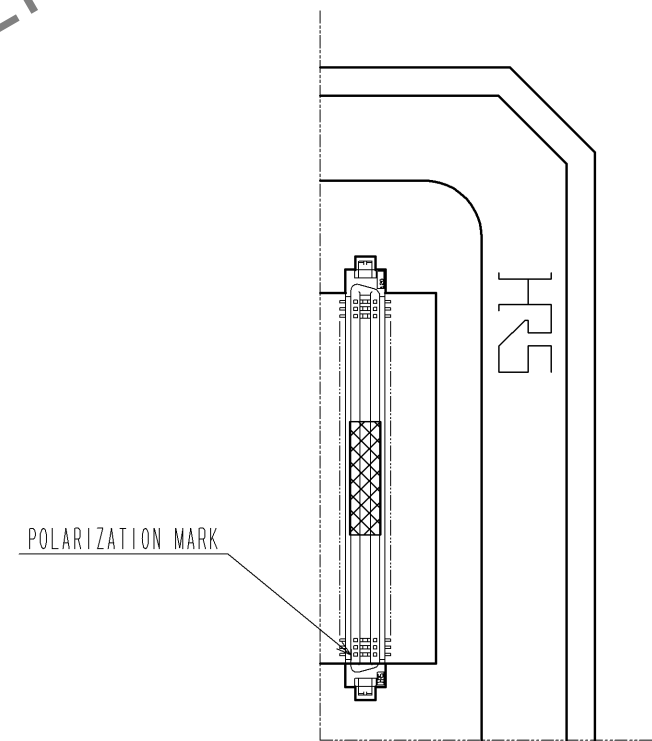
DRAWING FOR PACKING



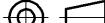



A-A (2:1)



B (FREE)



- NOTE 1 1 TRAY:30 CONNECTORS
2 SETTING POSITION OF CONNECTORS IN THE TRAY SHALL BE ARRANGED IN ACCORDANCE WITH DRAWING.
3 REMOVE THE VACUUM PICK-UP TAPE AFTER MOUNTING THE CONNECTOR.
4 THE DIMENSIONS IN PARENTHESES ARE FOR REFERENCE.

2	POLYIMIDE	(TAPE FOR VACUUM PICK-UP)						
1	PS	TRAY		3		(CONNECTOR)		
NO.	MATERIAL	FINISH , REMARKS			NO.	MATERIAL	FINISH , REMARKS	
UNITS mm		SCALE 1 : 2	COUNT 	DESCRIPTION OF REVISIONS		DESIGNED	CHECKED	DATE
 HIROSE ELECTRIC CO., LTD.		APPROVED : HS. OKAWA	07. 05. 31	DRAWING NO. EDC3-082425-23				
		CHECED : HS. OZAWA	07. 05. 31	PART NO. FX2-100S-1. 27SVL (96)				
		DESIGNED : KT. DOI	07. 05. 31	CODE NO. CL572-2158-0-96				
		DRAWN : TS. MIYAKI	07. 05. 28	 2/2				