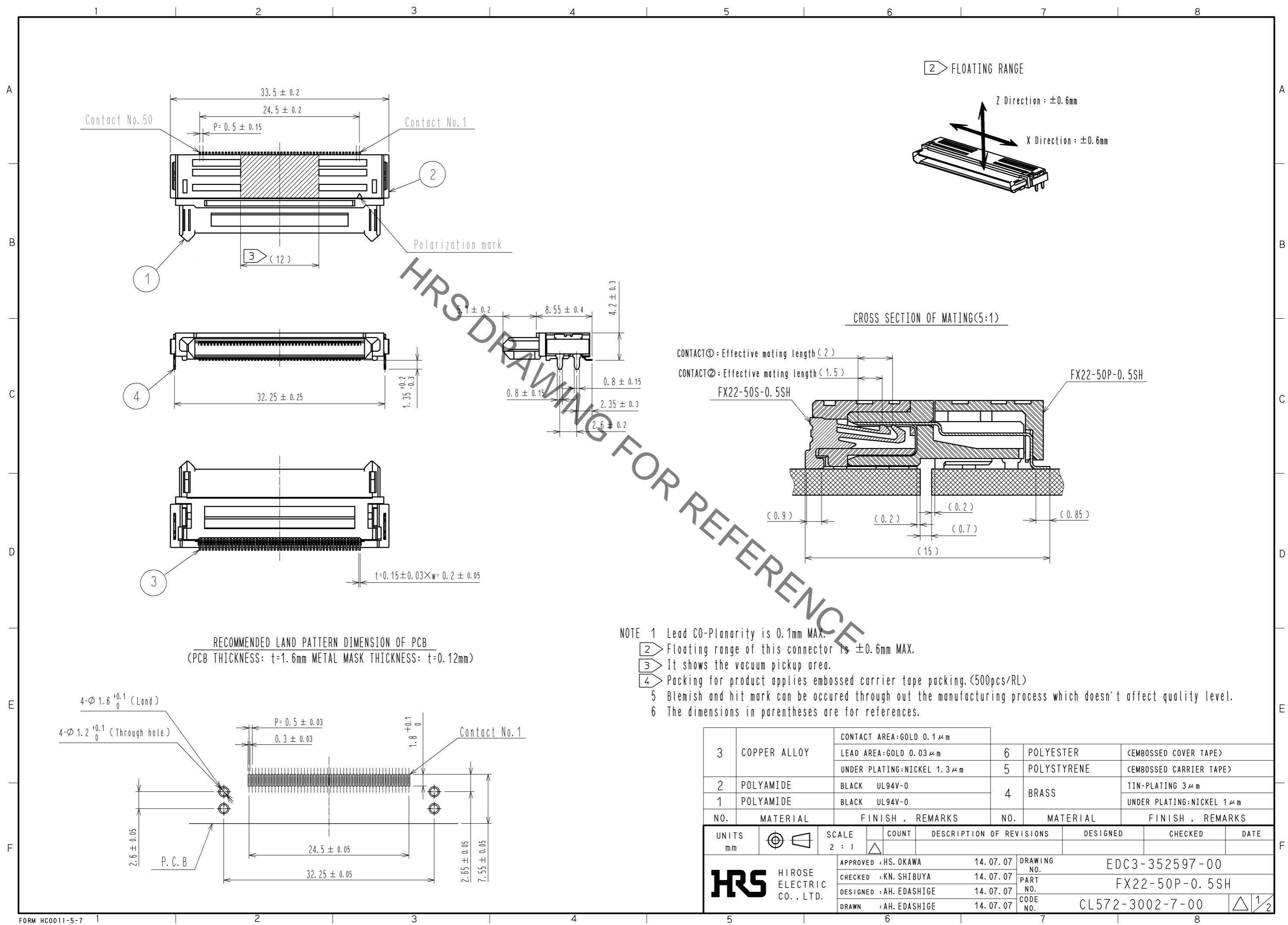


Jan.1.2022 Copyright 2022 HIROSE ELECTRIC CO., LTD. All Rights Reserved.
In case of consideration for using Automotive equipment / device which demand high reliability, kindly contact our sales window correspondents.



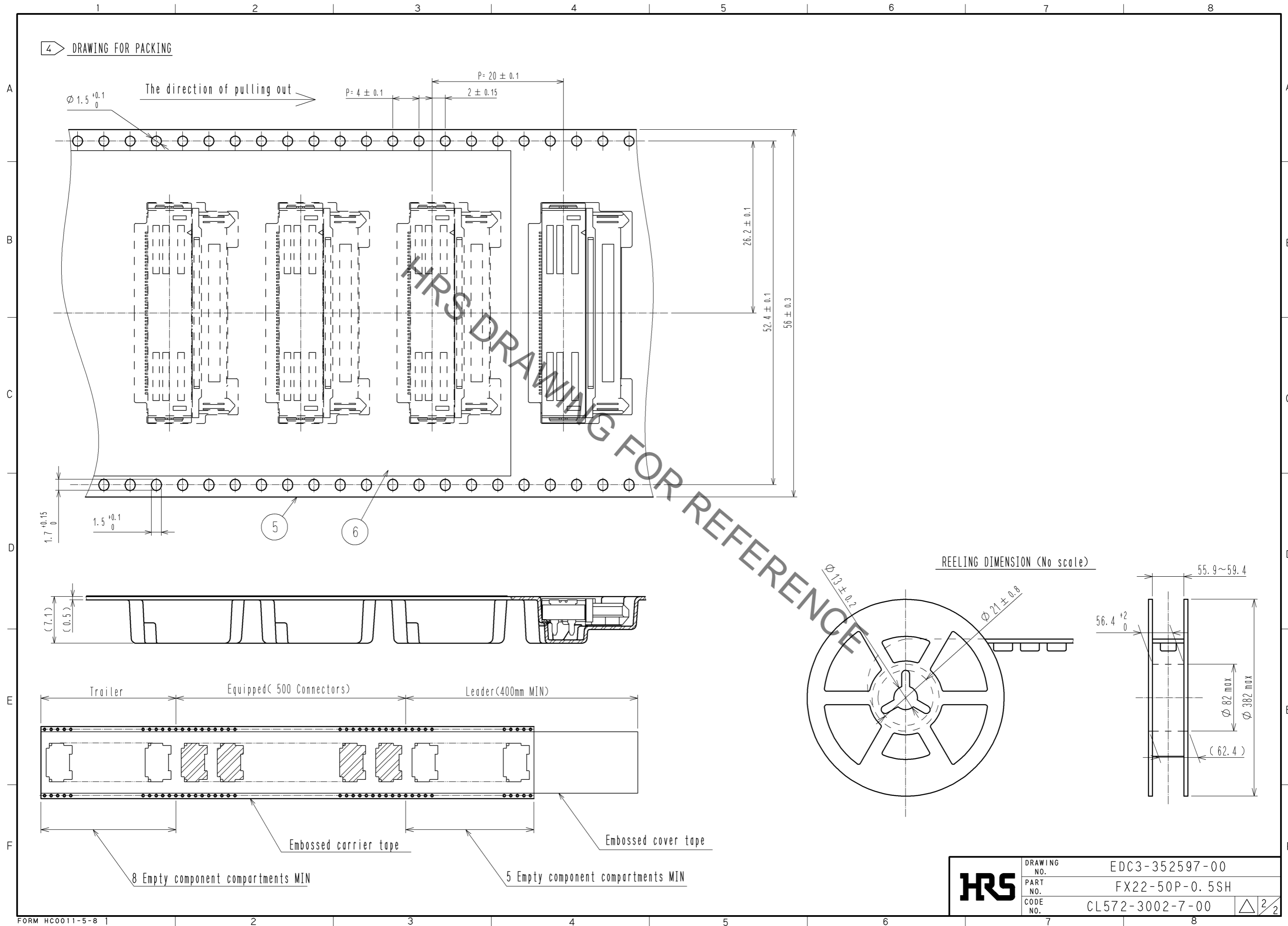
NO.	MATERIAL	FINISH	REMARKS	NO.	MATERIAL	FINISH	REMARKS
3	COPPER ALLOY		CONTACT AREA:GOLD 0.1 μm LEAD AREA:GOLD 0.03 μm UNDER PLATING:NICKEL 1.3 μm	6	POLYESTER		(EMBOSSSED COVER TAPE)
2	POLYAMIDE	BLACK	UL94V-0	5	POLYSTYRENE		(EMBOSSSED CARRIER TAPE)
1	POLYAMIDE	BLACK	UL94V-0	4	BRASS		TIN-PLATING 3 μm UNDER PLATING:NICKEL 1 μm

UNITS	SCALE	COUNT	DESCRIPTION OF REVISIONS	DESIGNED	CHECKED	DATE
mm	2 : 1	△				

APPROVED : HS. OKAWA	14. 07. 07	DRAWING NO.	EDC3-352597-00
CHECKED : KN. SHIBUYA	14. 07. 07	PART NO.	FX22-50P-0. 5SH
DESIGNED : AH. EDASHIGE	14. 07. 07	CODE NO.	CL572-3002-7-00
DRAWN : AH. EDASHIGE	14. 07. 07		

Jan.1.2022 Copyright 2022 HIROSE ELECTRIC CO., LTD. All Rights Reserved.
 In case of consideration for using Automotive equipment / device which demand high reliability, kindly contact our sales window correspondents.

4 DRAWING FOR PACKING



REELING DIMENSION (No scale)

HRS	DRAWING NO.	EDC3-352597-00	2/2
	PART NO.	FX22-50P-0.5SH	
	CODE NO.	CL572-3002-7-00	