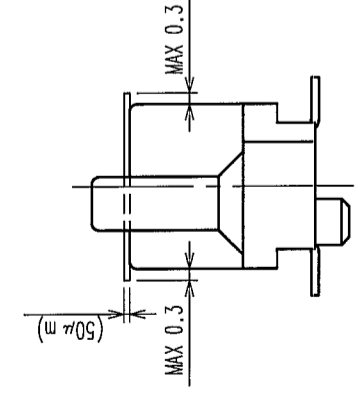
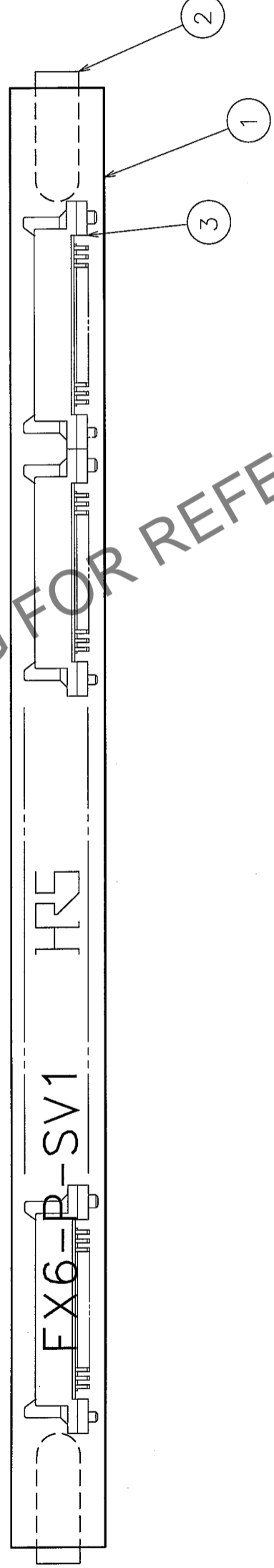
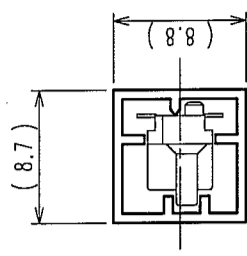
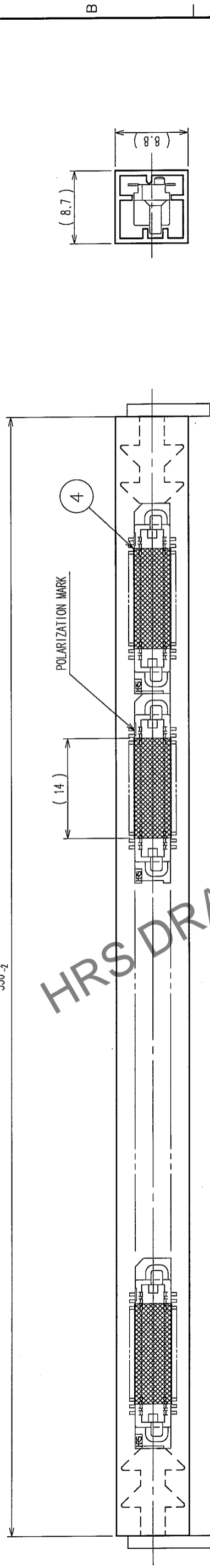




| COUNT | DESCRIPTION OF REVISIONS | BY | CHKD | DATE | COUNT | DESCRIPTION OF REVISIONS | BY | CHKD | DATE |
|-------|--------------------------|----|------|------|-------|--------------------------|----|------|------|
| △     |                          |    |      |      | △     |                          |    |      |      |
| △     |                          |    |      |      | △     |                          |    |      |      |
| △     |                          |    |      |      | △     |                          |    |      |      |

550 2



NOTE 1 THE DIMENSIONS IN PARENTHESSES ARE FOR REFERENCE.  
 2 ONE TUBE CONSISTS OF 11 PIECES.  
 3 REMOVE THE VACUUM PICK-UP TAPE AFTER MOUNTING THE CONNECTOR.

| NO.            | PVC            | (STOPPER)       | 4           | POLYIMIDE   | (TAPE FOR VACUUM PICK-UP) |
|----------------|----------------|-----------------|-------------|-------------|---------------------------|
| 1              | PVC            | (TUBE)          | 3           |             | (CONNECTOR)               |
| NO.            | MATERIAL       | FINISH, REMARKS | NO.         | MATERIAL    | FINISH, REMARKS           |
| CODE NO. (OLD) | DRAWN          |                 | DESIGNED    | CHECKED     | APPROVED                  |
| CL             | T. YANAGISAWA  |                 | N. Nakamura | N. Nakamura | H. Okawa                  |
|                | '05.11.15      |                 | '05.11.15   | '05.11.15   | '05.11.15                 |
| DRAWING NO.    | EDC3-084975-21 |                 | PART NO.    |             | FX6-100P-0.8SV1(91)       |
| SCALE          | 2:1            |                 | CODE NO.    |             | CL576-0028-0-91           |
| UNITS          | mm             |                 |             |             | 2                         |

DETAIL FOR TAPE FOR VACUUM PICK-UP ( 5 : 1 )

|    |  |
|----|--|
| TO |  |
|    |  |
|    |  |

**HRS**  
 HIROSE ELECTRIC CO., LTD.