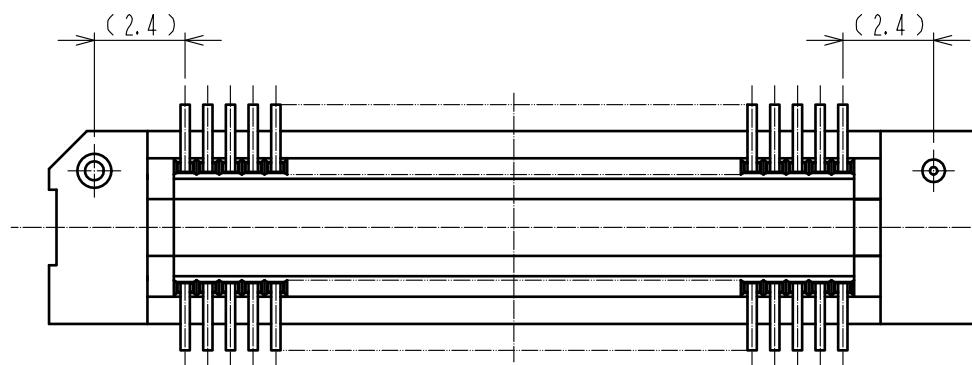
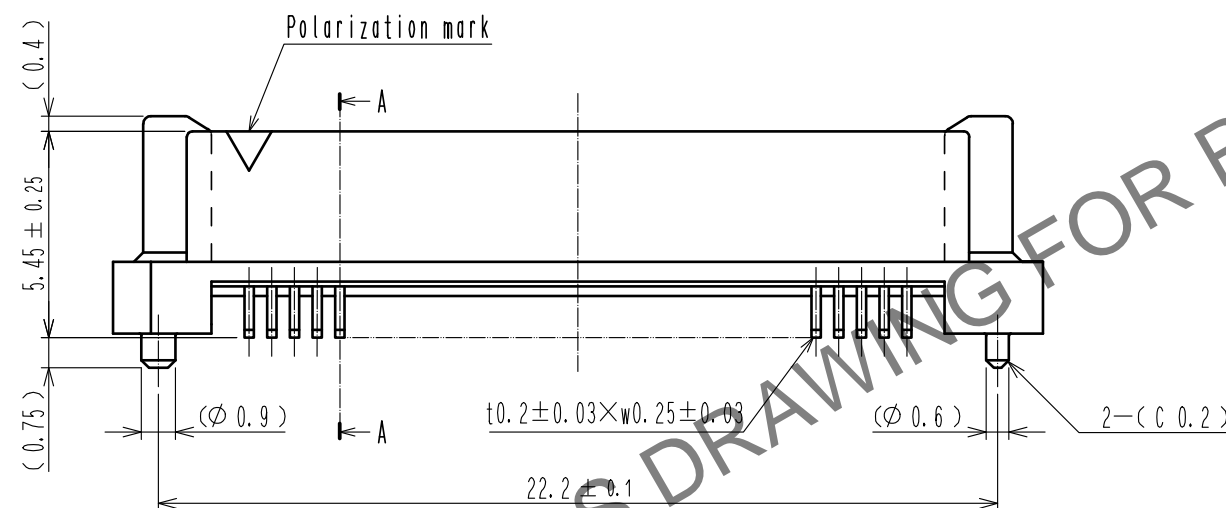
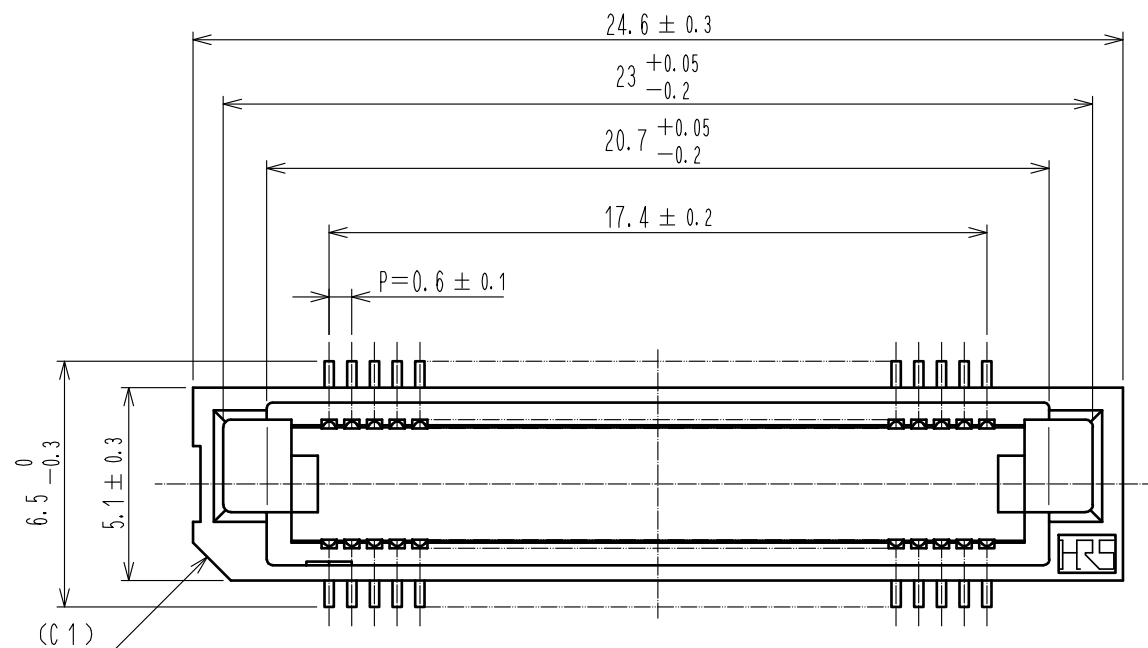
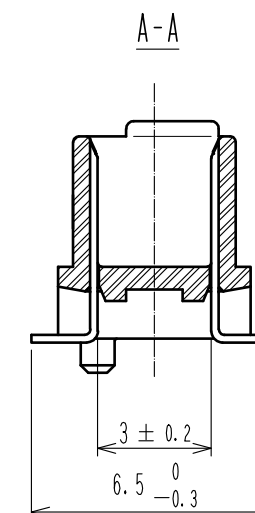
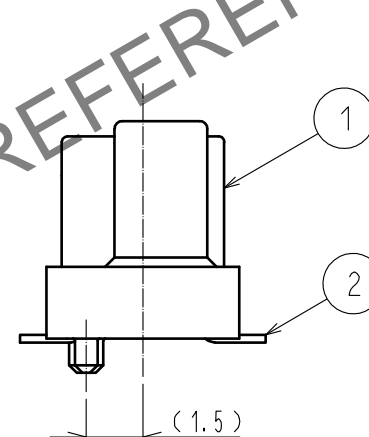
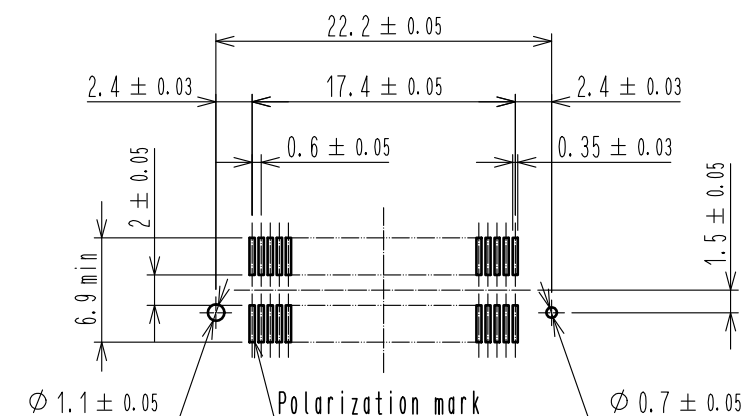


May.1.2024 Copyright 2024 HIROSE ELECTRIC CO., LTD. All Rights Reserved.
In case of consideration for using Automotive equipment / device which demand high reliability, kindly contact our sales window correspondents.



Recommended land pattern dimension of PCB (mounting side) (2:1)



- Notes 1 Lead CO-PLANARITY shall be 0.1mm max.
2 For modification, etc., preventive hole for sink mark may be added according to circumstances.
3 The dimensions in parentheses are for reference.

1		PPS	Light brown (UL94V-0)	2		PHOSPHOR BRONZE	Contact area : Gold 0.1μm min. Lead area : Tin-plating 1μm min. Under plating : Nickel 1μm min.
NO.	MATERIAL	FINISH . REMARKS		NO.	MATERIAL	FINISH . REMARKS	
UNITS mm		SCALE 5 : 1	COUNT 1	DESCRIPTION OF REVISIONS DIS-F-00006414		DESIGNED KS. NAKAJIMA	CHECKED HT. YAMAGUCHI
		APPROVED : HS. OKAWA		20051216		DRAWING NO. EDC-150831-71-25	
HIROSE ELECTRIC CO., LTD.		CHECKED : HS. OZAWA		20051216		PART NO. FX8C-60P-SV1(C71)	
		DESIGNED : KY. NAKAMURA		20051216		CODE NO. CL578-0521-6-71	
		DRAWN : SY. KAMIGA		20051108		1/2	

Added precaution

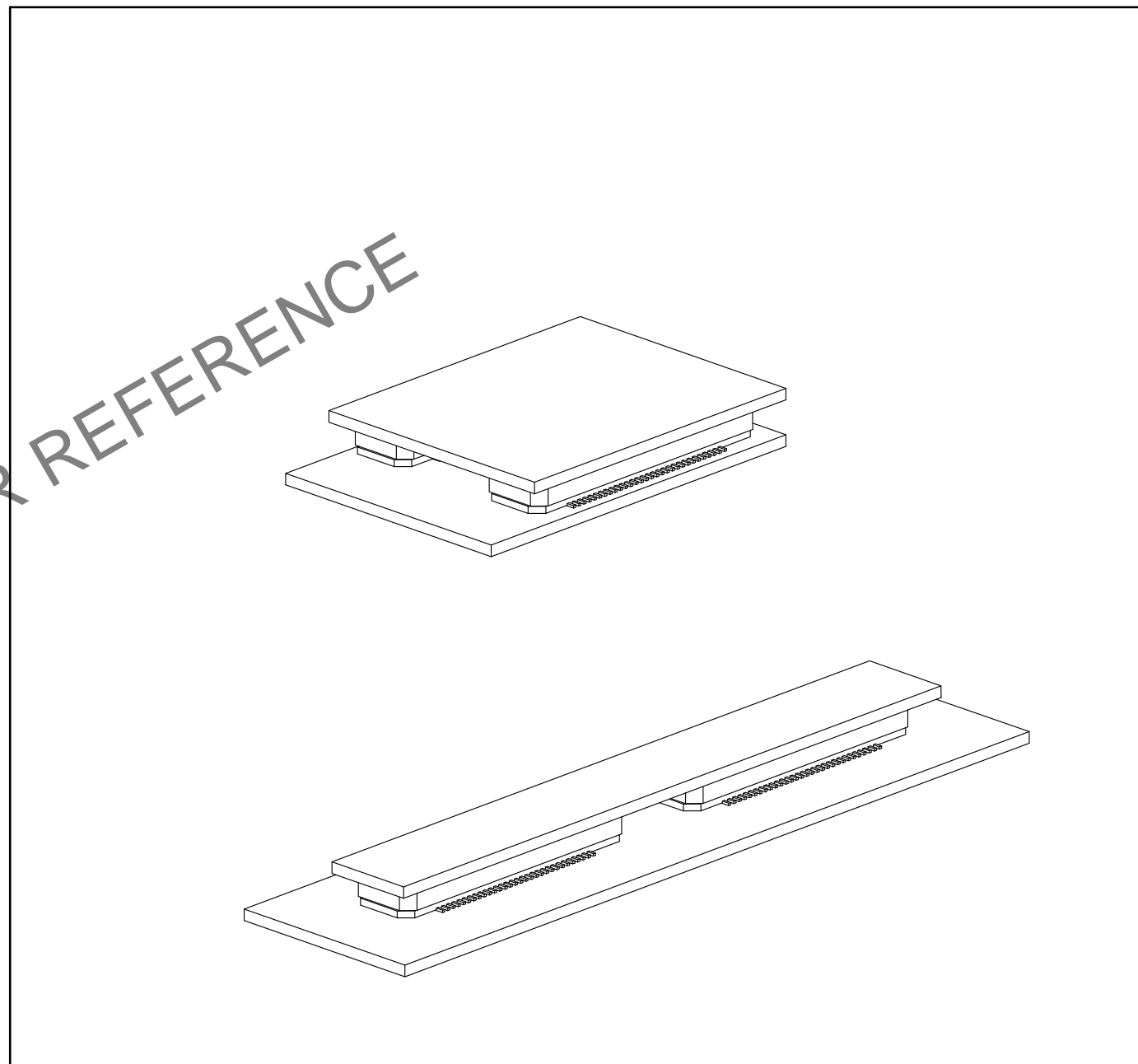
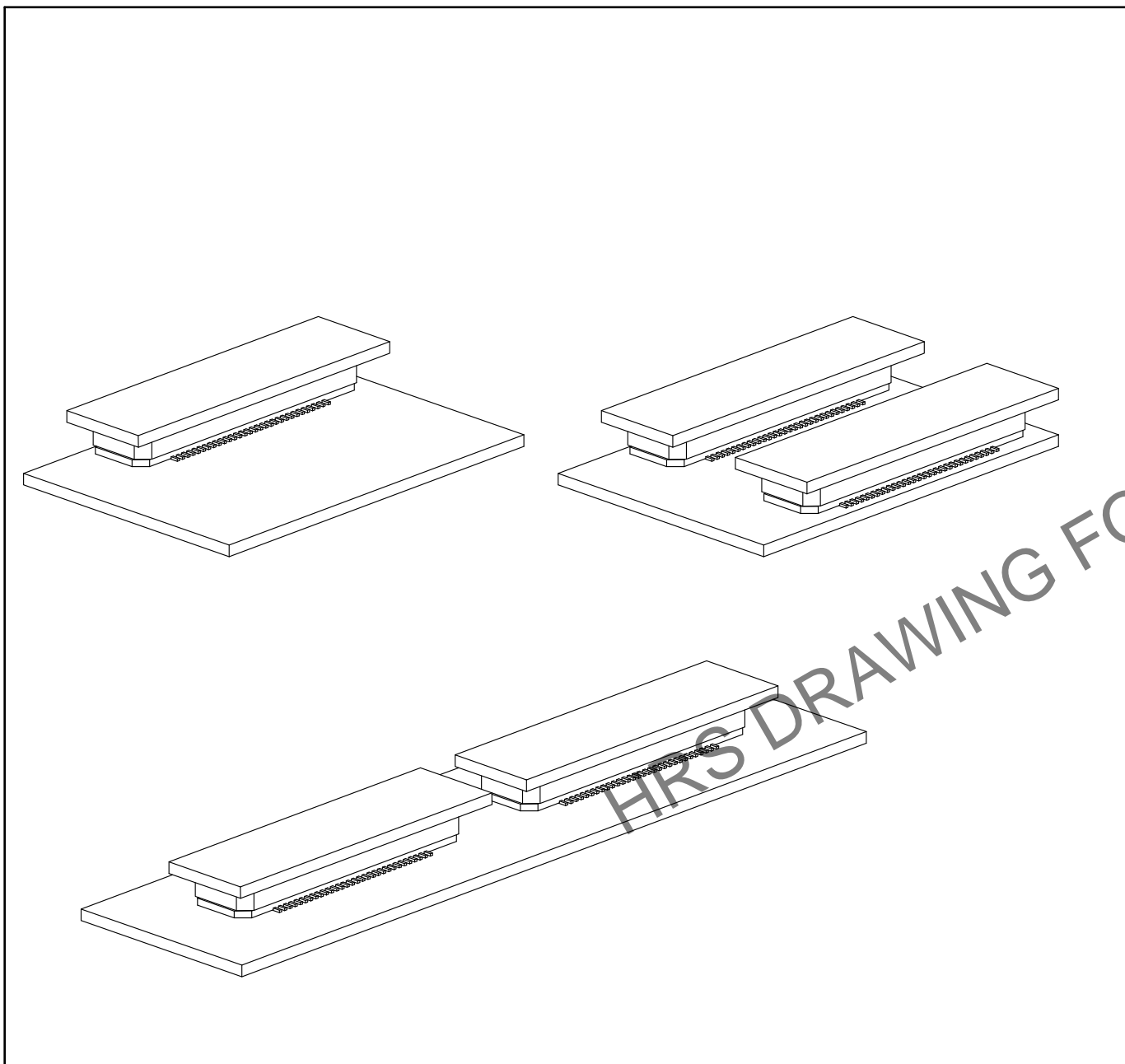
May.1.2024 Copyright 2024 HIROSE ELECTRIC CO., LTD. All Rights Reserved.
In case of consideration for using Automotive equipment / device which demand high reliability, kindly contact our sales window correspondents.

【Precaution】

When a board with multiple connectors mounted is mated, the connector may be damaged or deformed.
Please divide one side of the board so only one connector is mated per board.

OK

NG



HRS DRAWING FOR REFERENCE



DRAWING NO.	EDC-150831-71-25
PART NO.	FX8C-60P-SV1(71)
CODE NO.	CL578-0521-6-71