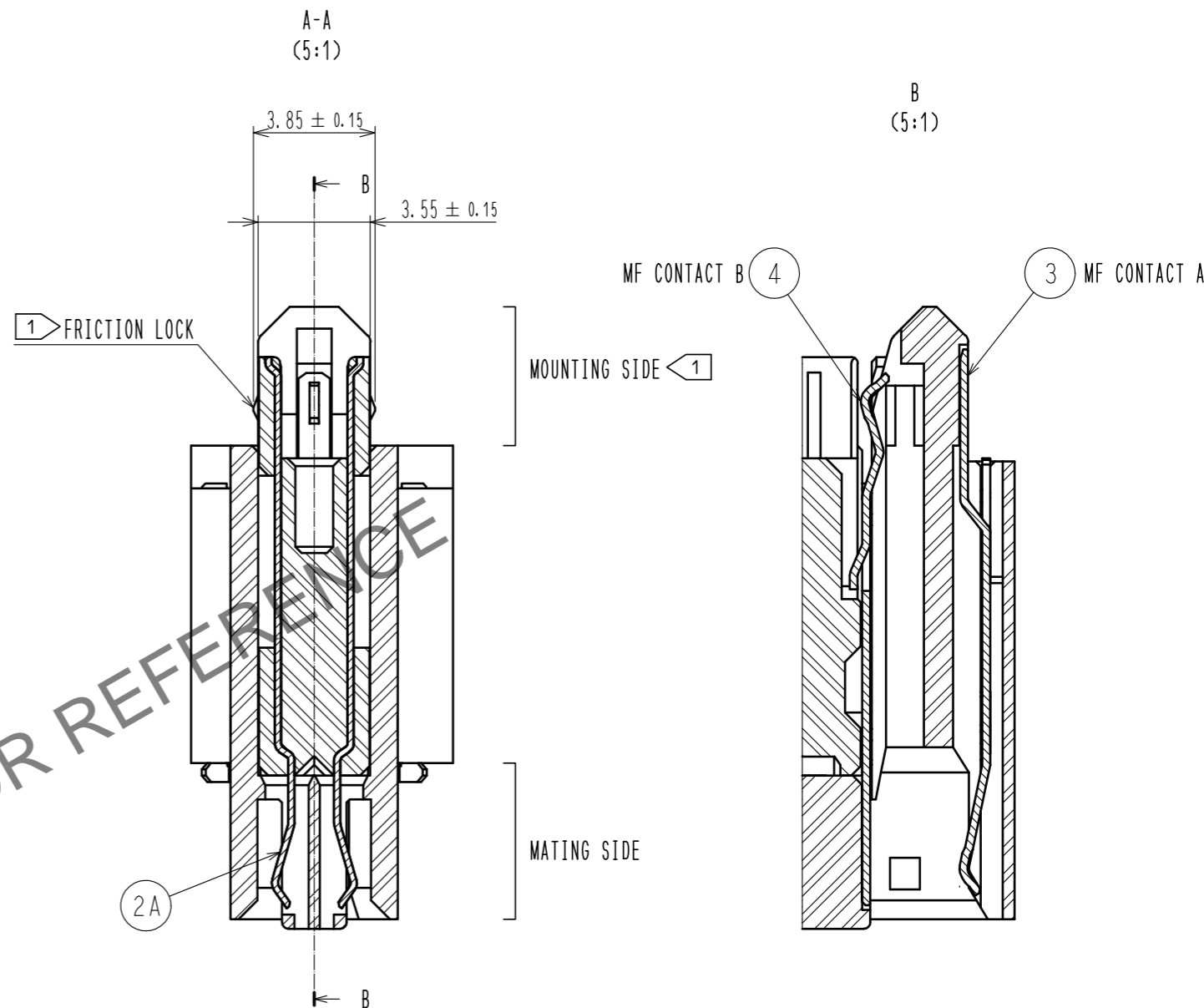
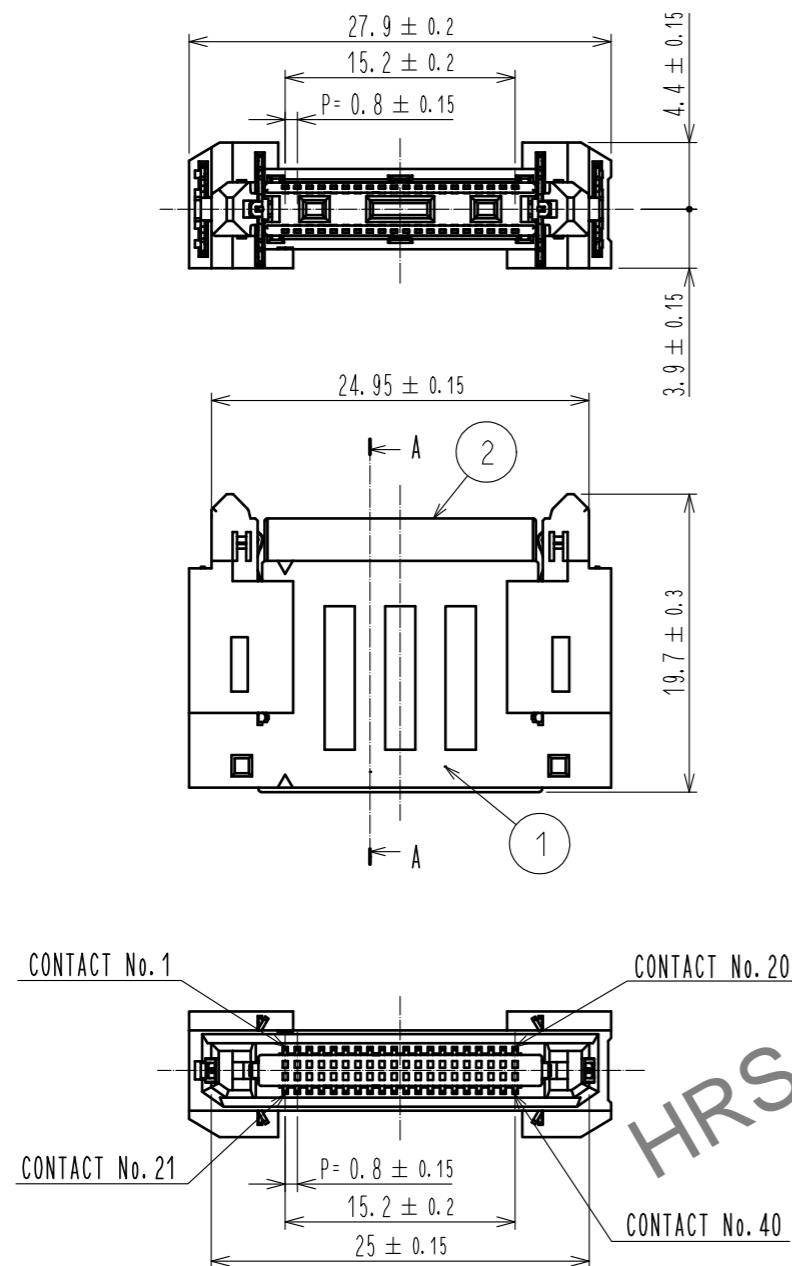


Oct.1.2024 Copyright 2024 HIROSE ELECTRIC CO., LTD. All Rights Reserved.
 In case of consideration for using Automotive equipment / device which demand high reliability, kindly contact our sales window correspondents.

1 2 3 4 5 6 7 8

A
B
C
D
E
F

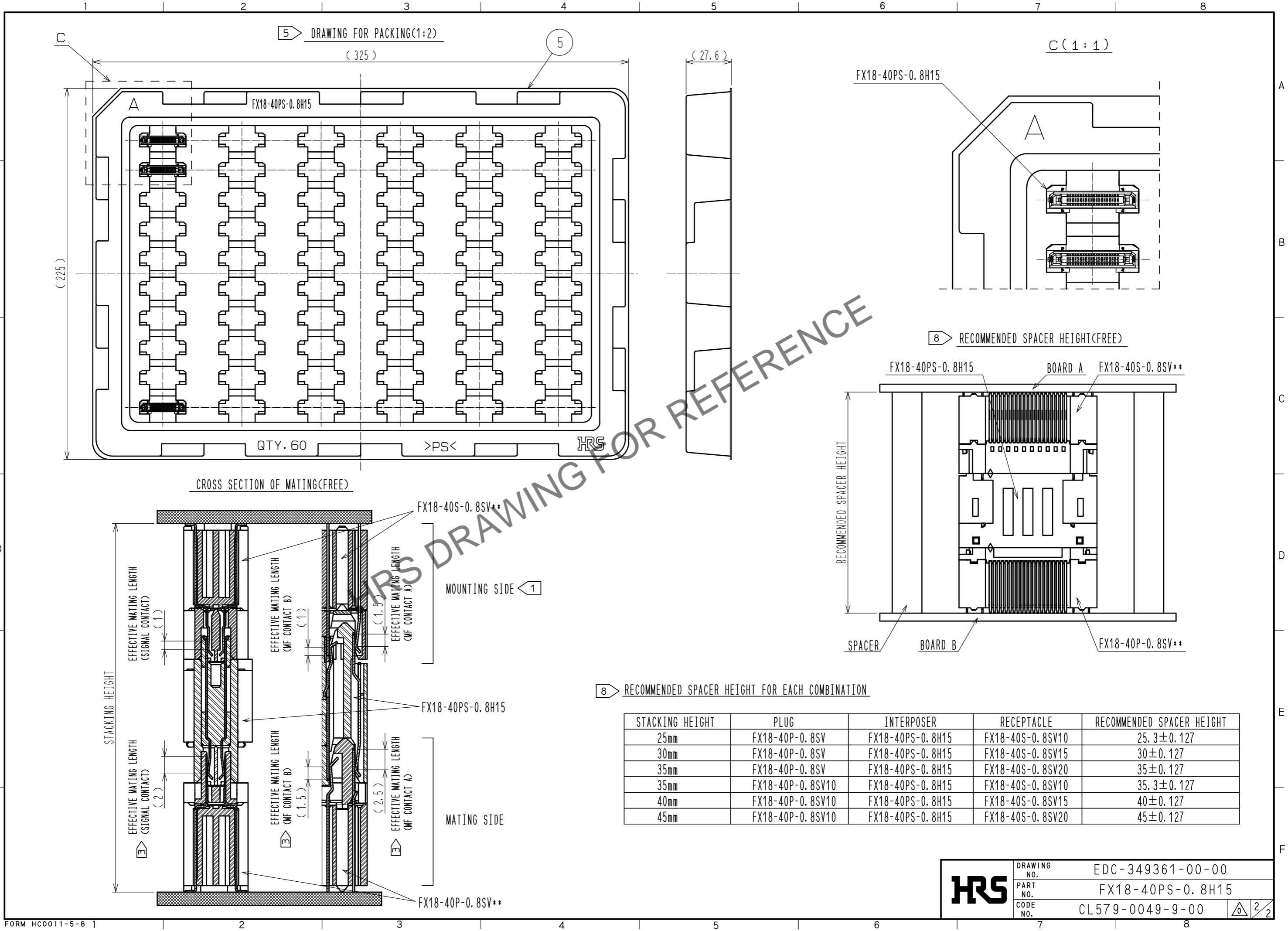


- NOTE 1 MOUNTING SIDE IS CONNECTED TO THE RECEPTACLE:FX18-40S-0.8SV** AND STABILIZED WITH FRICTION LOCKS. THE INSERTION/WITHDRAWAL IS ALLOWED UP TO 5 TIMES.
- 2 ALWAYS CONNECT THE MOUNTING SIDE TO THE RECEPTACLE FIRST AND THEN MATE THE MATING SIDE TO FX18-40P-0.8SV**.
- 3 THE MATING SIDE HAS SEQUENTIAL CONTACT STRUCTURE AS FOLLOWS.(MF CONTACT A->SIGNAL CONTACT->MF CONTACT B) WHEN USING THIS SEQUENTIAL STRUCTURE, PLEASE AVOID ANGLED INSERTION.
- 4 MF CONTACT A AND MF CONTACT B CAN BE USED AS POWER SUPPLY CONTACT. (3A/PIN MAX)
- 5 THIS IS PACKAGED IN TRAY.(60pcs/TRAY)
- 6 BLEMISH AND HIT MARK CAN BE OCCURED THROUGH OUT THE MANUFACTURING PROCESS WHICH DOESN' T AFFECT QUALITY LEVEL.
- 7 THE DIMENSIONS IN PARENTHESES ARE FOR REFERENCES.
- 8 RECOMMENDED SPACER HEIGHT FOR EACH COMBINATION. SPACERS ARE REQUIRED TO PROTECT THE SOLDER JOINTS FROM EXCESSIVE STRESS.

2A	COPPER ALLOY	CONTACT AREA:GOLD 0.1 μm UNDER PLATING:NICKEL 1.3 μm	5	POLYSTYRENE			
2	PBT	BLACK UL94V-0	4	COPPER ALLOY	CONTACT AREA:GOLD 0.1 μm UNDER PLATING:NICKEL 1.3 μm		
1	POLYAMIDE	BLACK UL94V-0	3	COPPER ALLOY	CONTACT AREA:GOLD 0.1 μm UNDER PLATING:NICKEL 1.3 μm		
NO.	MATERIAL	FINISH . REMARKS	NO.	MATERIAL	FINISH . REMARKS		
UNITS mm		SCALE 2 : 1	COUNT	DESCRIPTION OF REVISIONS	DESIGNED	CHECKED	DATE
HRS HIROSE ELECTRIC CO., LTD.		APPROVED : HS. OKAWA 15.06.30	DRAWING NO. EDC-349361-00-00				
		CHECKED : HT. YAMAGUCHI 15.06.30	PART NO. FX18-40PS-0.8H15				
		DESIGNED : TH. SANO 15.06.30	CODE NO. CL579-0049-9-00				
		DRAWN : TH. SANO 15.06.30					

FORM HC0011-5-7 1 2 3 4 5 6 7 8

Oct.1.2024 Copyright 2024 HIROSE ELECTRIC CO., LTD. All Rights Reserved.
 In case of consideration for using Automotive equipment / device which demand high reliability, kindly contact our sales window correspondents.



8 RECOMMENDED SPACER HEIGHT FOR EACH COMBINATION

STACKING HEIGHT	PLUG	INTERPOSER	RECEPTACLE	RECOMMENDED SPACER HEIGHT
25mm	FX18-40P-0.8SV	FX18-40PS-0.8H15	FX18-40S-0.8SV10	25.3±0.127
30mm	FX18-40P-0.8SV	FX18-40PS-0.8H15	FX18-40S-0.8SV15	30±0.127
35mm	FX18-40P-0.8SV	FX18-40PS-0.8H15	FX18-40S-0.8SV20	35±0.127
35mm	FX18-40P-0.8SV10	FX18-40PS-0.8H15	FX18-40S-0.8SV10	35.3±0.127
40mm	FX18-40P-0.8SV10	FX18-40PS-0.8H15	FX18-40S-0.8SV15	40±0.127
45mm	FX18-40P-0.8SV10	FX18-40PS-0.8H15	FX18-40S-0.8SV20	45±0.127

HRS

DRAWING NO.	EDC-349361-00-00
PART NO.	FX18-40PS-0.8H15
CODE NO.	CL579-0049-9-00

2/2