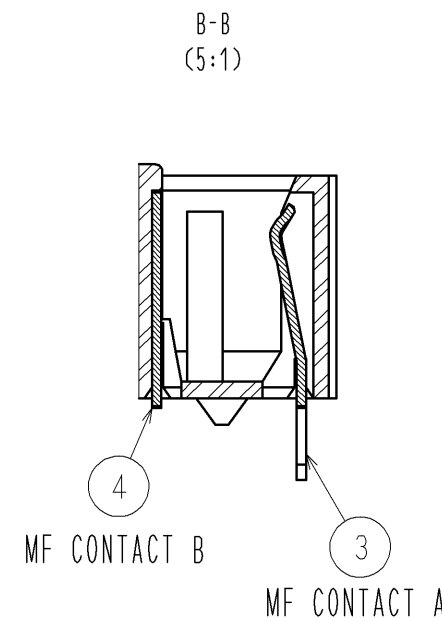
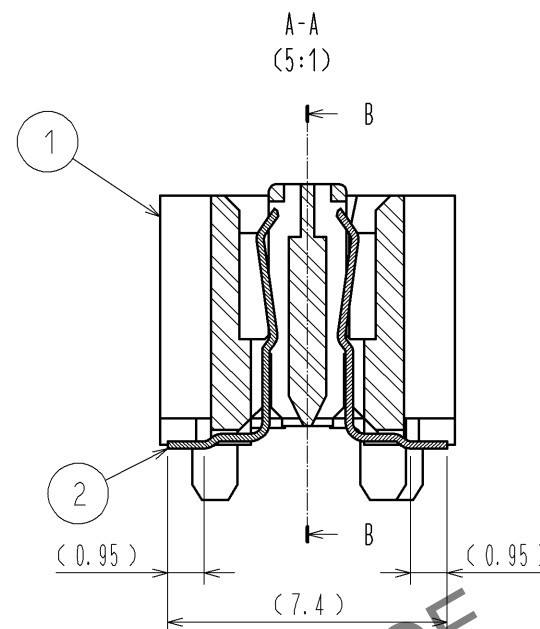
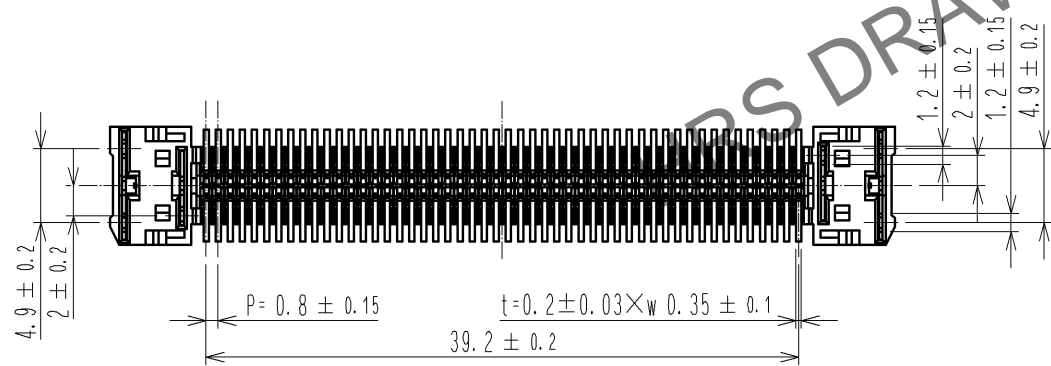
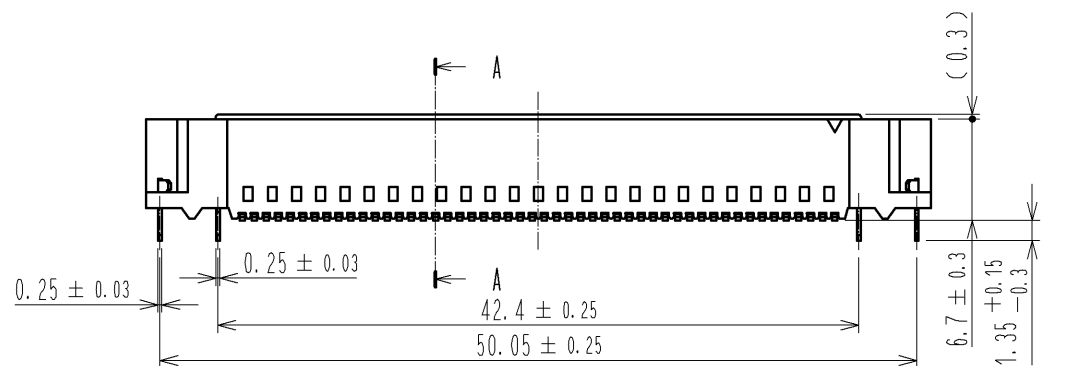
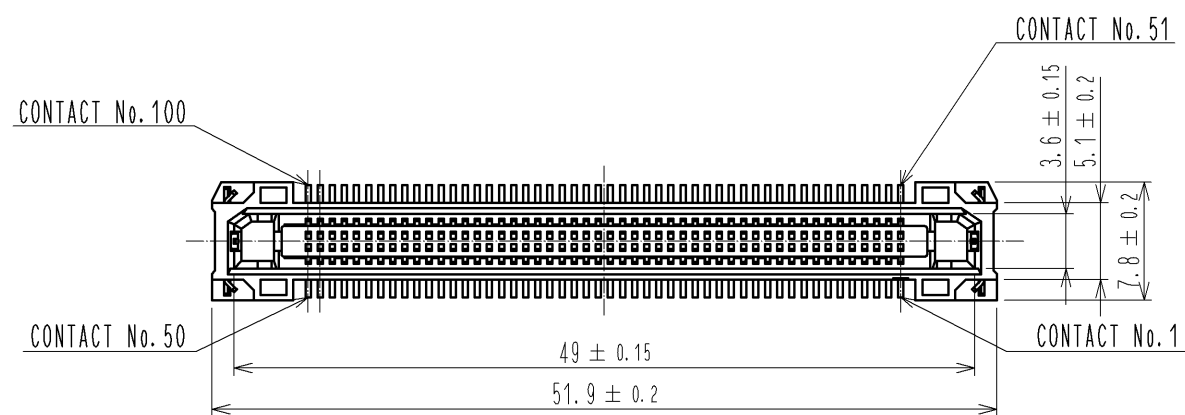
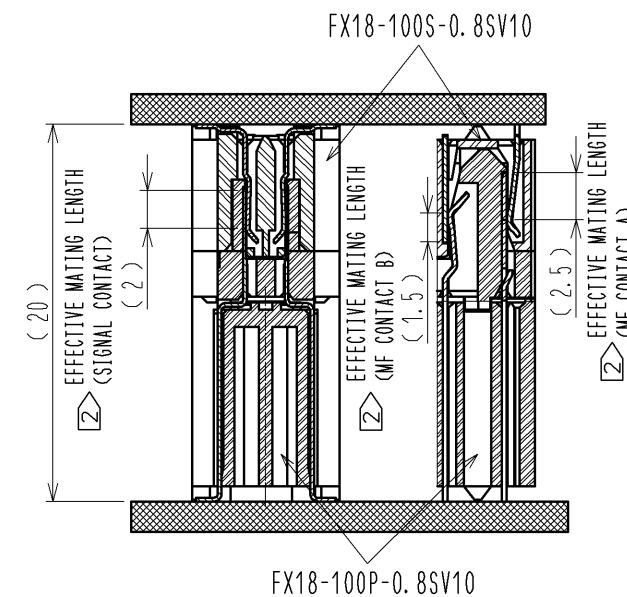
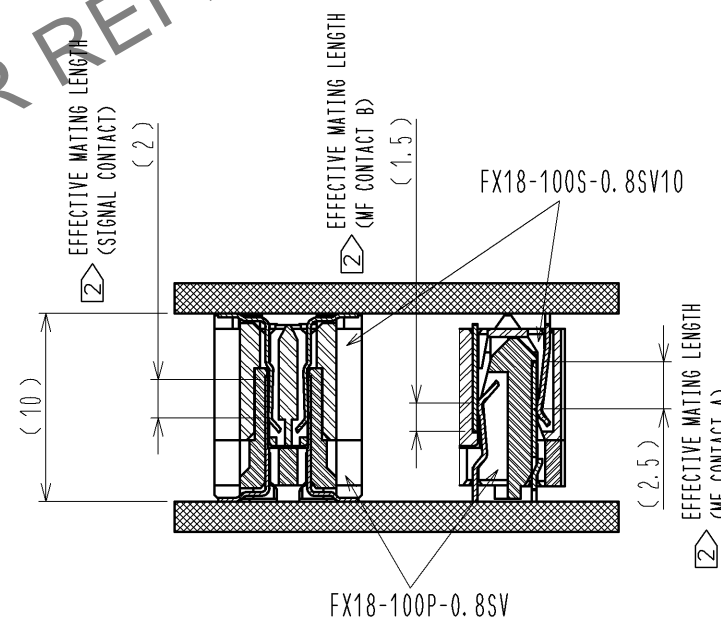


Jul.1.2024 Copyright 2024 HIROSE ELECTRIC CO., LTD. All Rights Reserved.  
 In case of consideration for using Automotive equipment / device which demand high reliability, kindly contact our sales window correspondents.



CROSS SECTION OF MATING(FREE)  
 STACKING HEIGHT=10mm

CROSS SECTION OF MATING(FREE)  
 STACKING HEIGHT=20mm



NOTE 1 LEAD CO-PLANARITY IS 0.1mm MAX.

2 CONTACTS ARE 3 STEPS SEQUENTIAL. (MF CONTACT A->SIGNAL CONTACT->MF CONTACT B)  
 WHEN USING THIS SEQUENTIAL STRUCTURE, PLEASE AVOID ANGLED INSERTION.

3 MF CONTACT A AND MF CONTACT B CAN BE USED AS POWER SUPPLY CONTACT. (3A/PIN MAX)

4 IT SHOWS THE VACUUM PICKUP AREA. (SEE PAGE 2)

REMOVE THE MYLAR TAPE BEFORE MATING CONNECTORS.

5 THIS IS PACKAGED IN TRAY. (40pcs/TRAY)

6 BLEMISH AND HIT MARK CAN BE OCCURED THROUGH OUT THE MANUFACTURING PROCESS WHICH DOESN' T AFFECT QUALITY LEVEL.

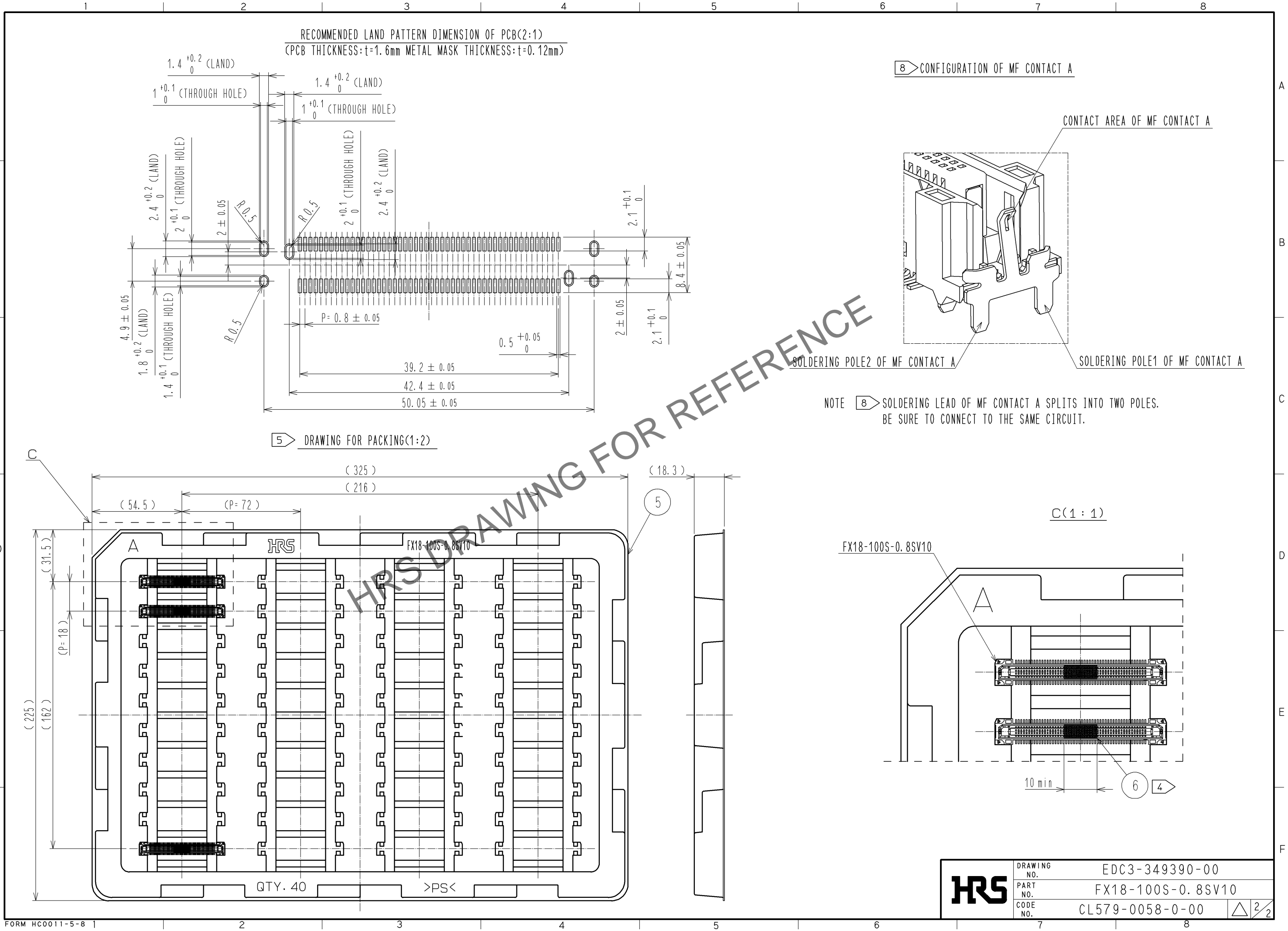
7 THE DIMENSIONS IN PARENTHESES ARE FOR REFERENCES.

|   |              |   |
|---|--------------|---|
| 6 | POLYIMIDE    |   |
| 5 | POLYSTYRENE  |   |
| 4 | COPPER ALLOY | CONTACT AREA:GOLD 0.1 μm  |
|   |              | LEAD AREA:TIN-PLATING 1 μm  |
|   |              | UNDER PLATING:NICKEL 1.3 μm   |
| 3 | COPPER ALLOY | CONTACT AREA:GOLD 0.1 μm  |
|   |              | LEAD AREA:TIN-PLATING 1 μm  |
|   |              | UNDER PLATING:NICKEL 1.3 μm   |
| 2 | COPPER ALLOY | CONTACT AREA:GOLD 0.1 μm<br>LEAD AREA:GOLD 0.03 μm<br>UNDER PLATING:NICKEL 1.3 μm |
| 1 | POLYAMIDE    | BLACK UL94V-0   |

| NO. | MATERIAL     | FINISH | REMARKS | NO. | MATERIAL     | FINISH | REMARKS |
|-----|--------------|--------|---------|-----|--------------|--------|---------|
| 6   | POLYIMIDE    |        |         | 6   | POLYIMIDE    |        |         |
| 5   | POLYSTYRENE  |        |         | 5   | POLYSTYRENE  |        |         |
| 4   | COPPER ALLOY |        |         | 4   | COPPER ALLOY |        |         |
| 3   | COPPER ALLOY |        |         | 3   | COPPER ALLOY |        |         |
| 2   | COPPER ALLOY |        |         | 2   | COPPER ALLOY |        |         |
| 1   | POLYAMIDE    |        |         | 1   | POLYAMIDE    |        |         |

| UNITS                   | SCALE | COUNT | DESCRIPTION OF REVISIONS | DESIGNED                   | CHECKED | DATE |
|-------------------------|-------|-------|--------------------------|----------------------------|---------|------|
| mm                      | 2 : 1 | △     |                          |                            |         |      |
| APPROVED : HS. OKAWA    |       |       | 14.07.16                 | DRAWING NO. EDC3-349390-00 |         |      |
| CHECKED : HT. YAMAGUCHI |       |       | 14.07.15                 | PART NO. FX18-100S-0.8SV10 |         |      |
| DESIGNED : TH. SANO     |       |       | 14.07.15                 | CODE NO. CL579-0058-0-00   |         |      |
| DRAWN : TH. SANO        |       |       | 14.07.15                 | △ 1/2                      |         |      |

Jul.1.2024 Copyright 2024 HIROSE ELECTRIC CO., LTD. All Rights Reserved.  
 In case of consideration for using Automotive equipment / device which demand high reliability, kindly contact our sales window correspondents.



|            |             |                   |       |
|------------|-------------|-------------------|-------|
| <b>HRS</b> | DRAWING NO. | EDC3-349390-00    | △ 2/2 |
|            | PART NO.    | FX18-100S-0.8SV10 |       |
|            | CODE NO.    | CL579-0058-0-00   |       |
|            |             |                   |       |