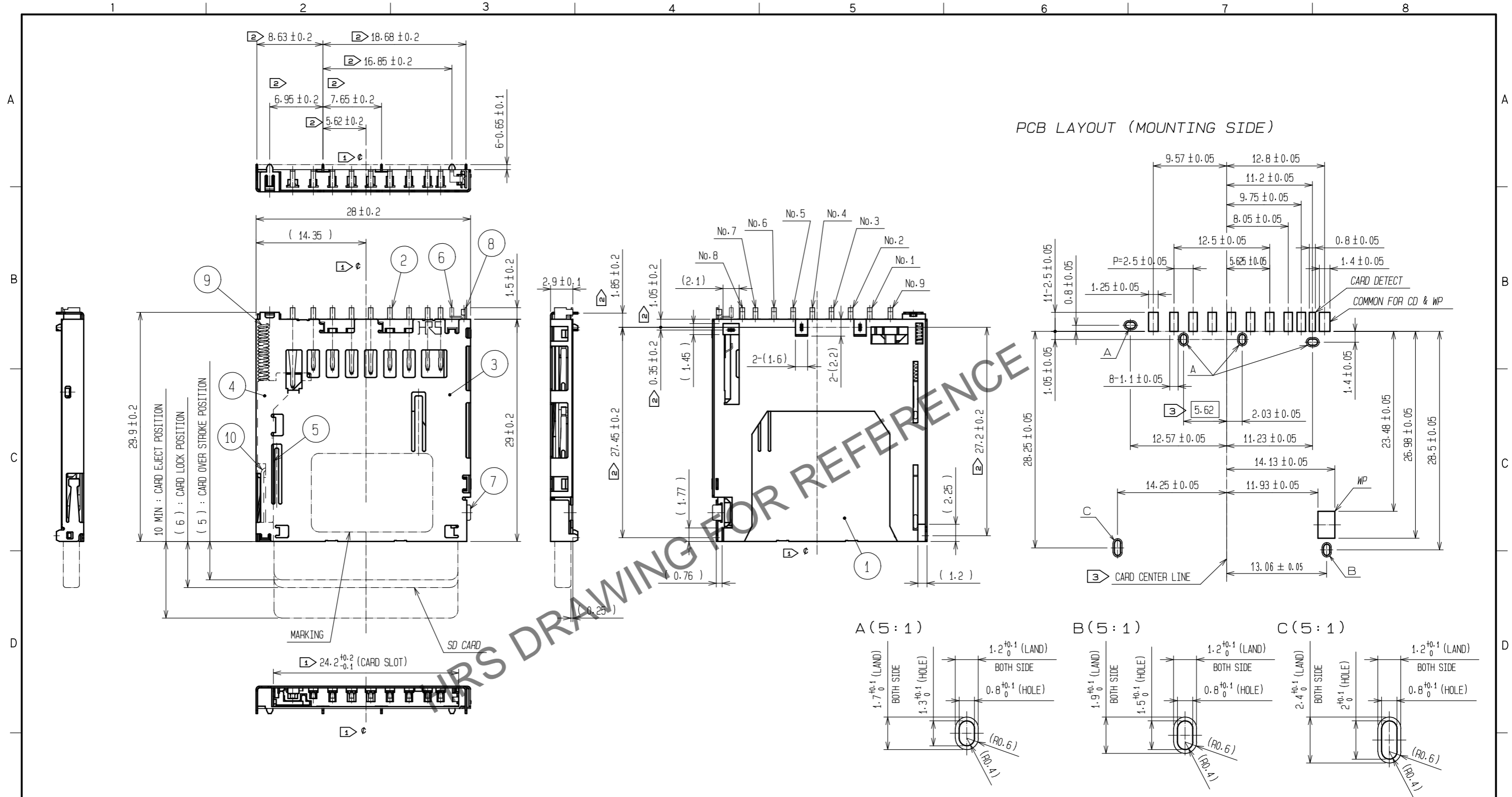


Feb.1.2025 Copyright 2025 HIROSE ELECTRIC CO., LTD. All Rights Reserved.  
 In case of consideration for using Automotive equipment / device which demand high reliability, kindly contact our sales window correspondents.



- NOTE. ①  $\phi$  IS THE CENTERLINE OF THE CARD SLOT.  
 ② THESE DIMENSIONS ARE FROM THE CENTER TO THE CENTER OF EACH DIP PIN.  
 ③ 'CARD CENTER LINE' IS SPECIFIED BY DIMENSION [5.62].  
 4 CARD DETECTION PROCEDURE AND WP DETECTION PROCEDURE ARE SHOWN IN THE BELOW.

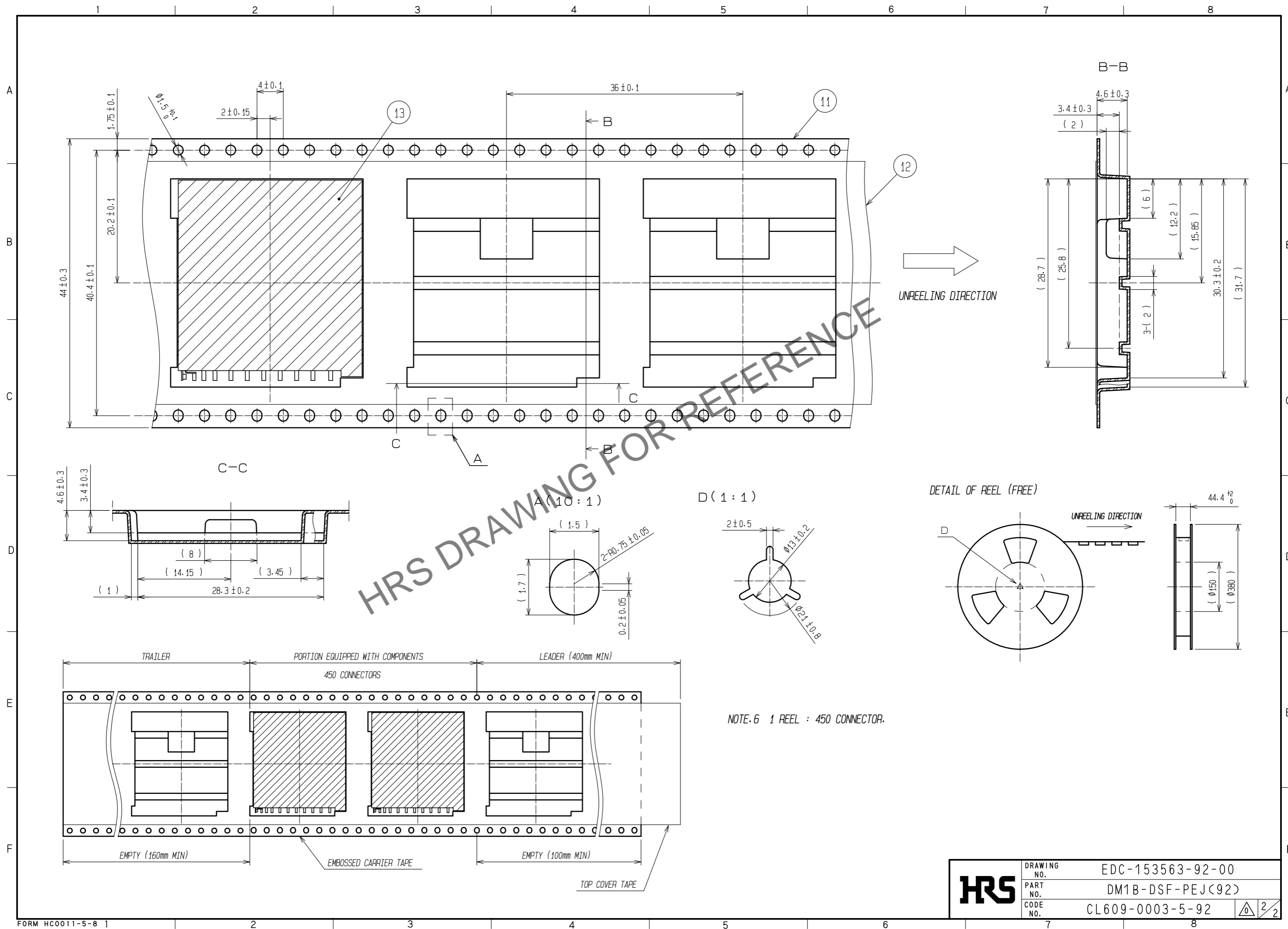
CARD DETECTION SWITCH		WP DETECTION SWITCH		
NO CARD	CARD INSERTED	NO CARD	CARD INSERTED	
			WRITE PROTECT	WRITE ENABLE
OPEN	CLOSE	OPEN	OPEN	CLOSE
PART NO.6 PART NO.8	PART NO.6 PART NO.8	PART NO.7 PART NO.8	PART NO.7 PART NO.8	PART NO.7 PART NO.8

5 LEAD CO-PLANARITY TO BE 0.1 mm.

5	STAINLESS STEEL		13	(CONNECTOR)	
4	PA	BLACK UL94V-0	12	POLYESTER	
3	STAINLESS STEEL	DIP AREA Ni0.2 $\mu$ m + Sn1.5 $\mu$ m	11	PS	
2	COPPER ALLOY	CONTACT AREA Ni1.5 $\mu$ m + Au0.2 $\mu$ m	10	STAINLESS STEEL	
		MOUNTING AREA Ni1.5 $\mu$ m + Au0.03 $\mu$ m	9	STEEL WIRE	Ni
1	LCP	BLACK UL94V-0	6~8	COPPER ALLOY	CONTACT AREA Ni1.5 $\mu$ m + Au0.2 $\mu$ m
					MOUNTING AREA Ni1.5 $\mu$ m + Au0.03 $\mu$ m

UNITS	SCALE	COUNT	DESCRIPTION OF REVISIONS	DESIGNED	CHECKED	DATE
m	2 : 1					
APPROVED : HT. YAMAGUCHI 20200318			DRAWING NO. EDC-153563-92-00			
CHECKED : HT. YAMAGUCHI 20200318			PART NO. DM1B-DSF-PEJ(92)			
DESIGNED : MT. ITANO 20200318			CODE NO. CL609-0003-5-92			
DRAWN : DS. HIROWATARI 20200317						

Feb.1.2025 Copyright 2025 HIROSE ELECTRIC CO., LTD. All Rights Reserved.  
 In case of consideration for using Automotive equipment / device which demand high reliability, kindly contact our sales window correspondents.



<b>HRS</b>	DRAWING NO.	EDC-153563-92-00
	PART NO.	DM1B-DSF-PEJ(92)
	CODE NO.	CL609-0003-5-92
		2/2