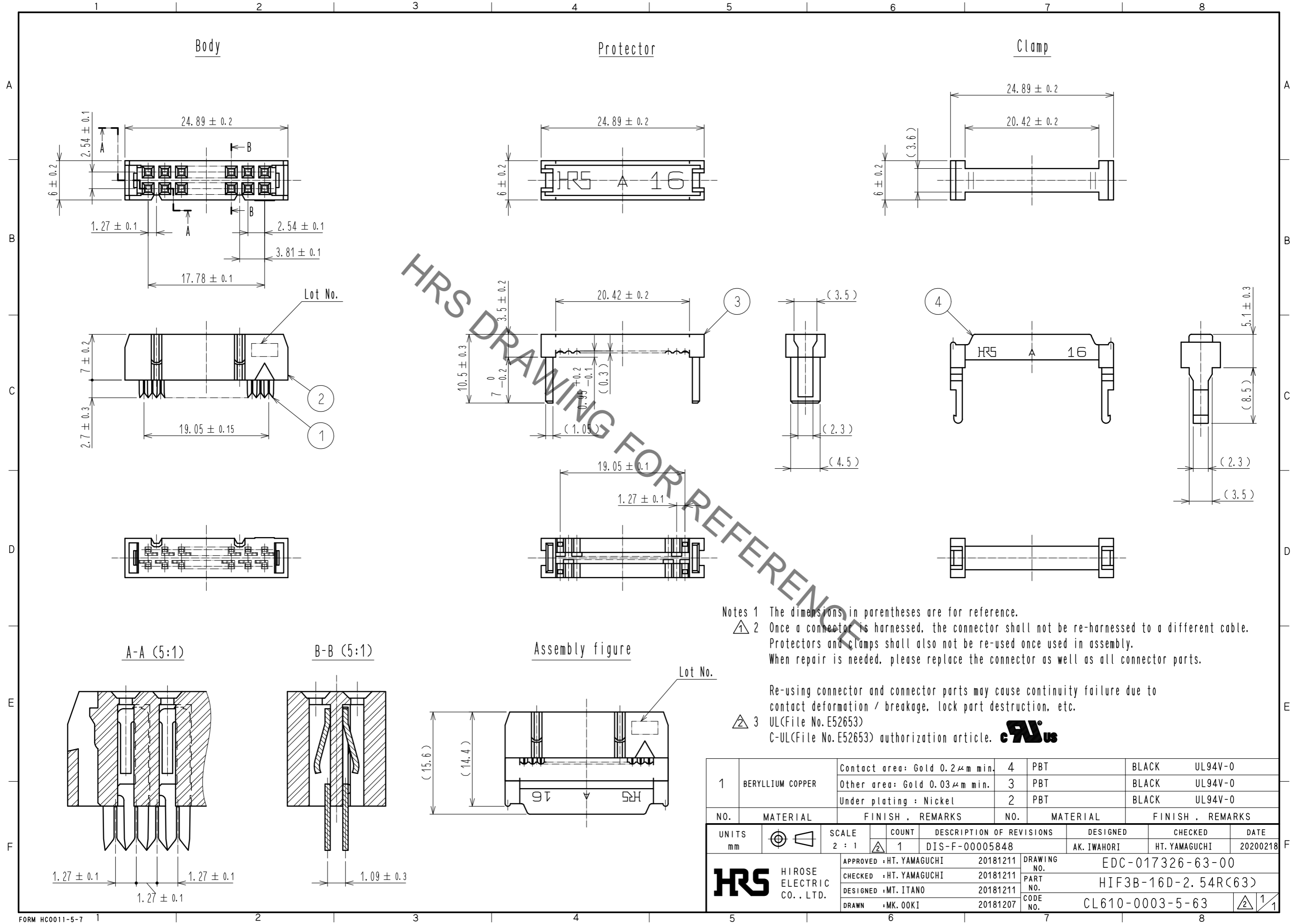


Aug.1.2022 Copyright 2022 HIROSE ELECTRIC CO., LTD. All Rights Reserved.
In case of consideration for using Automotive equipment / device which demand high reliability, kindly contact our sales window correspondents.



Notes 1 The dimensions in parentheses are for reference.
 ① 2 Once a connector is harnessed, the connector shall not be re-harnessed to a different cable. Protectors and clamps shall also not be re-used once used in assembly. When repair is needed, please replace the connector as well as all connector parts.

Re-using connector and connector parts may cause continuity failure due to contact deformation / breakage, lock part destruction, etc.
 ② 3 UL(File No. E52653)
 C-UL(File No. E52653) authorization article. **cALus**

1	BERYLLIUM COPPER	Contact area: Gold 0.2μm min.	4	PBT	BLACK	UL94V-0	
		Other area: Gold 0.03μm min.	3	PBT	BLACK	UL94V-0	
		Under plating : Nickel	2	PBT	BLACK	UL94V-0	
NO.	MATERIAL	FINISH . REMARKS	NO.	MATERIAL	FINISH . REMARKS		
UNITS mm		SCALE 2 : 1	COUNT 1	DESCRIPTION OF REVISIONS DIS-F-00005848	DESIGNED AK. IWAHORI	CHECKED HT. YAMAGUCHI	DATE 20200218
HRS HIROSE ELECTRIC CO., LTD.		APPROVED : HT. YAMAGUCHI	20181211	DRAWING NO.	EDC-017326-63-00		
		CHECKED : HT. YAMAGUCHI	20181211	PART NO.	HIF3B-16D-2.54R(63)		
		DESIGNED : MT. ITANO	20181211	CODE NO.	CL610-0003-5-63		
		DRAWN : MK. OOKI	20181207		② 1/1		