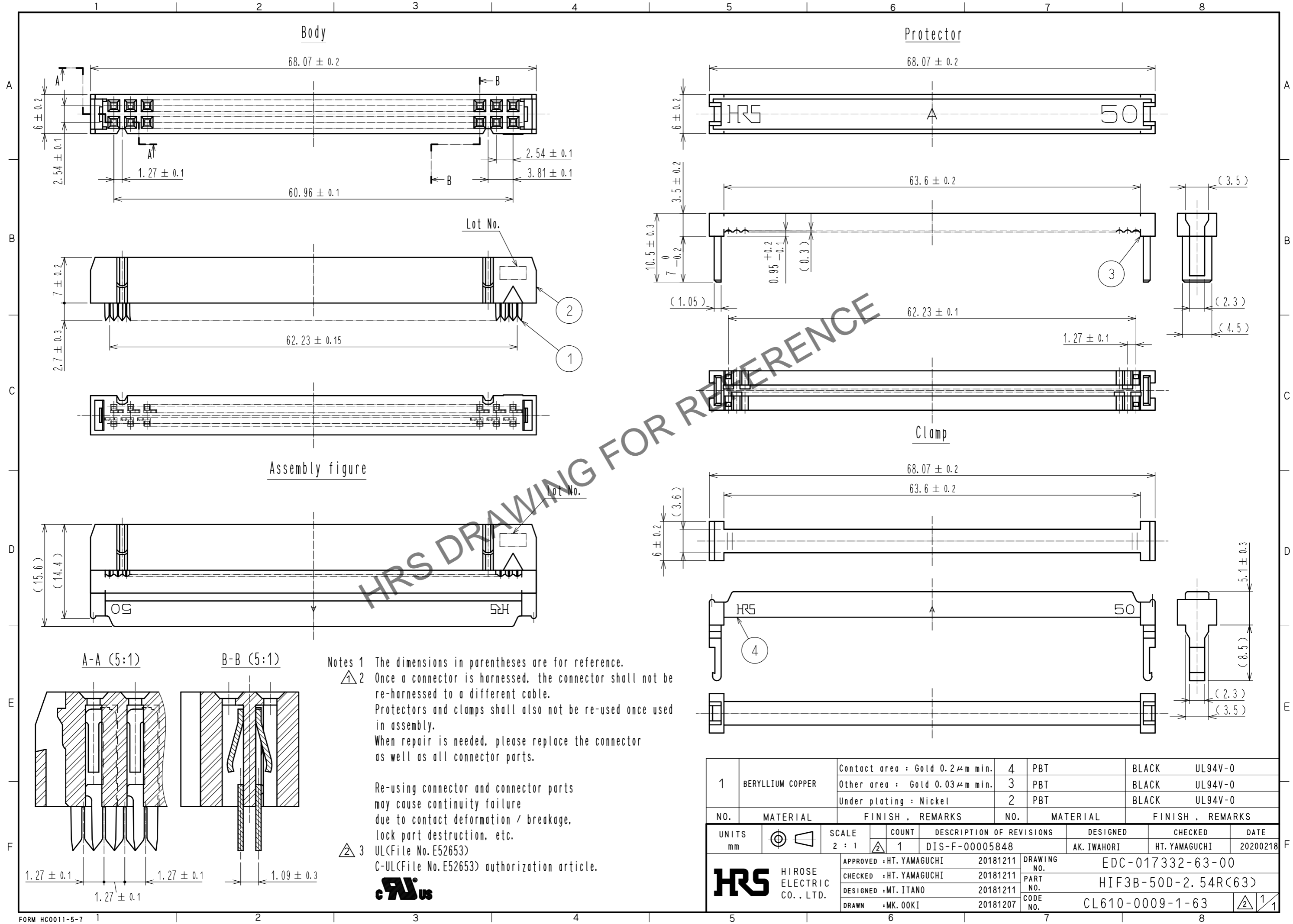


May.1.2024 Copyright 2024 HIROSE ELECTRIC CO., LTD. All Rights Reserved.  
In case of consideration for using Automotive equipment / device which demand high reliability, kindly contact our sales window correspondents.



Assembly figure

Notes 1 The dimensions in parentheses are for reference.  
 2 Once a connector is harnessed, the connector shall not be re-harnessed to a different cable. Protectors and clamps shall also not be re-used once used in assembly. When repair is needed, please replace the connector as well as all connector parts.  
 Re-using connector and connector parts may cause continuity failure due to contact deformation / breakage, lock part destruction, etc.  
 3 UL(File No. E52653)  
 C-UL(File No. E52653) authorization article.



1	BERYLLIUM COPPER	Contact area : Gold 0.2μm min.	4	PBT	BLACK	UL94V-0		
		Other area : Gold 0.03μm min.	3	PBT	BLACK	UL94V-0		
		Under plating : Nickel	2	PBT	BLACK	UL94V-0		
NO.	MATERIAL	FINISH . REMARKS	NO.	MATERIAL	FINISH . REMARKS			
UNITS mm		SCALE 2 : 1	COUNT 1	DESCRIPTION OF REVISIONS DIS-F-00005848		DESIGNED AK. IWAHORI	CHECKED HT. YAMAGUCHI	DATE 20200218
<b>HRS</b> HIROSE ELECTRIC CO., LTD.		APPROVED : HT. YAMAGUCHI	20181211	DRAWING NO. EDC-017332-63-00		PART NO. HIF3B-50D-2.54R(63)		
		CHECKED : HT. YAMAGUCHI	20181211	CODE NO. CL610-0009-1-63				
		DESIGNED : MT. ITANO	20181211					
		DRAWN : MK. OOKI	20181207					