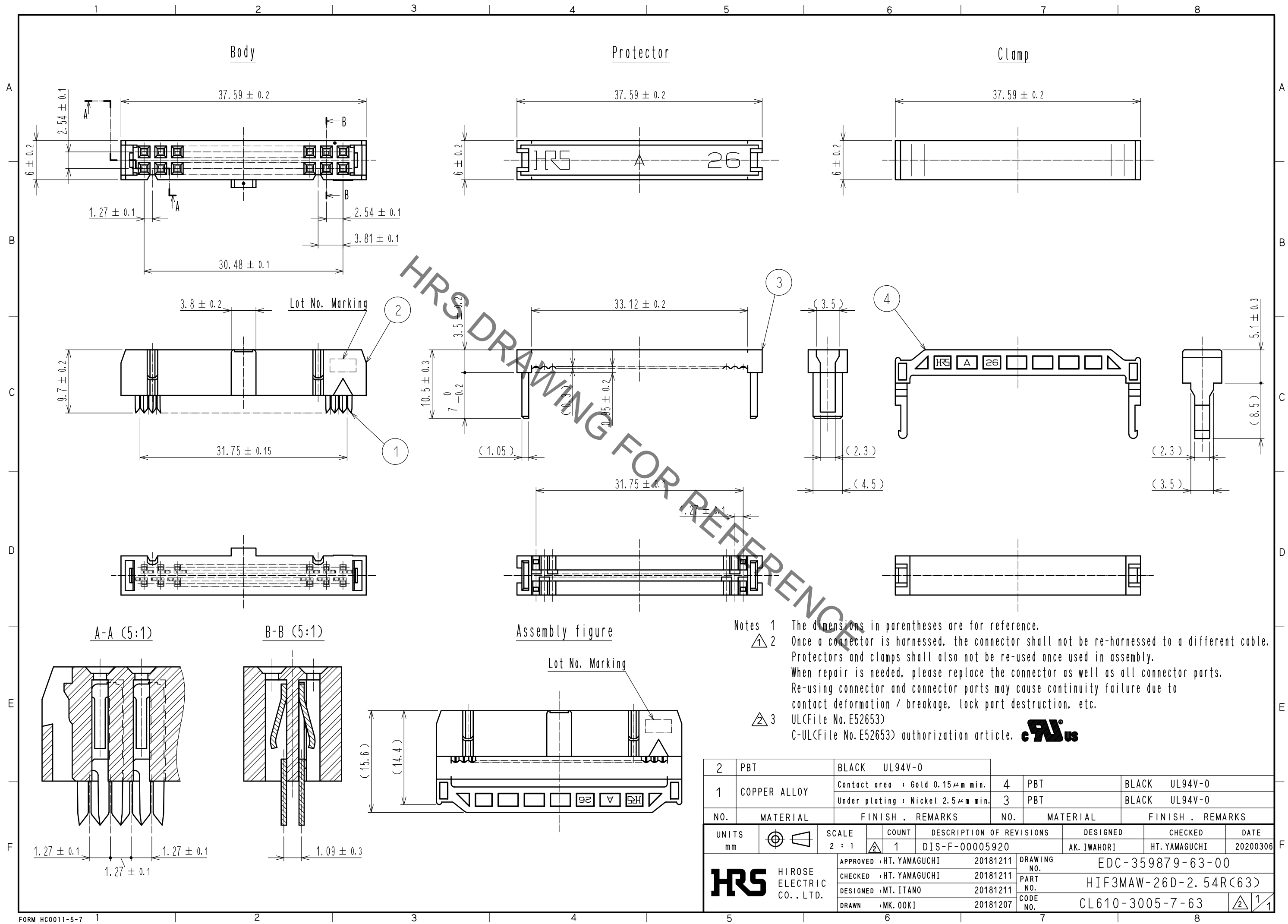





Jan.1.2022 Copyright 2022 HIROSE ELECTRIC CO., LTD. All Rights Reserved.
 In case of consideration for using Automotive equipment / device which demand high reliability, kindly contact our sales window correspondents.



Notes 1 The dimensions in parentheses are for reference.
 2 Once a connector is harnessed, the connector shall not be re-harnessed to a different cable. Protectors and clamps shall also not be re-used once used in assembly. When repair is needed, please replace the connector as well as all connector parts. Re-using connector and connector parts may cause continuity failure due to contact deformation / breakage, lock part destruction, etc.
 3 UL(File No. E52653)
 C-UL(File No. E52653) authorization article. 

2	PBT	BLACK	UL94V-0	4	PBT	BLACK	UL94V-0	
1	COPPER ALLOY	Contact area : Gold 0.15μm min.		3	PBT	BLACK	UL94V-0	
		Under plating : Nickel 2.5μm min.						
NO.	MATERIAL	FINISH	REMARKS	NO.	MATERIAL	FINISH	REMARKS	
UNITS		SCALE	COUNT	DESCRIPTION OF REVISIONS		DESIGNED	CHECKED	DATE
mm		2 : 1	1	DIS-F-00005920		AK. IWAHORI	HT. YAMAGUCHI	20200306
		APPROVED : HT. YAMAGUCHI	20181211	DRAWING NO.		EDC-359879-63-00		
HIROSE ELECTRIC CO., LTD.		CHECKED : HT. YAMAGUCHI	20181211	PART NO.		HIF3MAW-26D-2.54R(63)		
		DESIGNED : MT. ITANO	20181211	CODE NO.		CL610-3005-7-63		
		DRAWN : MK. OKI	20181207					