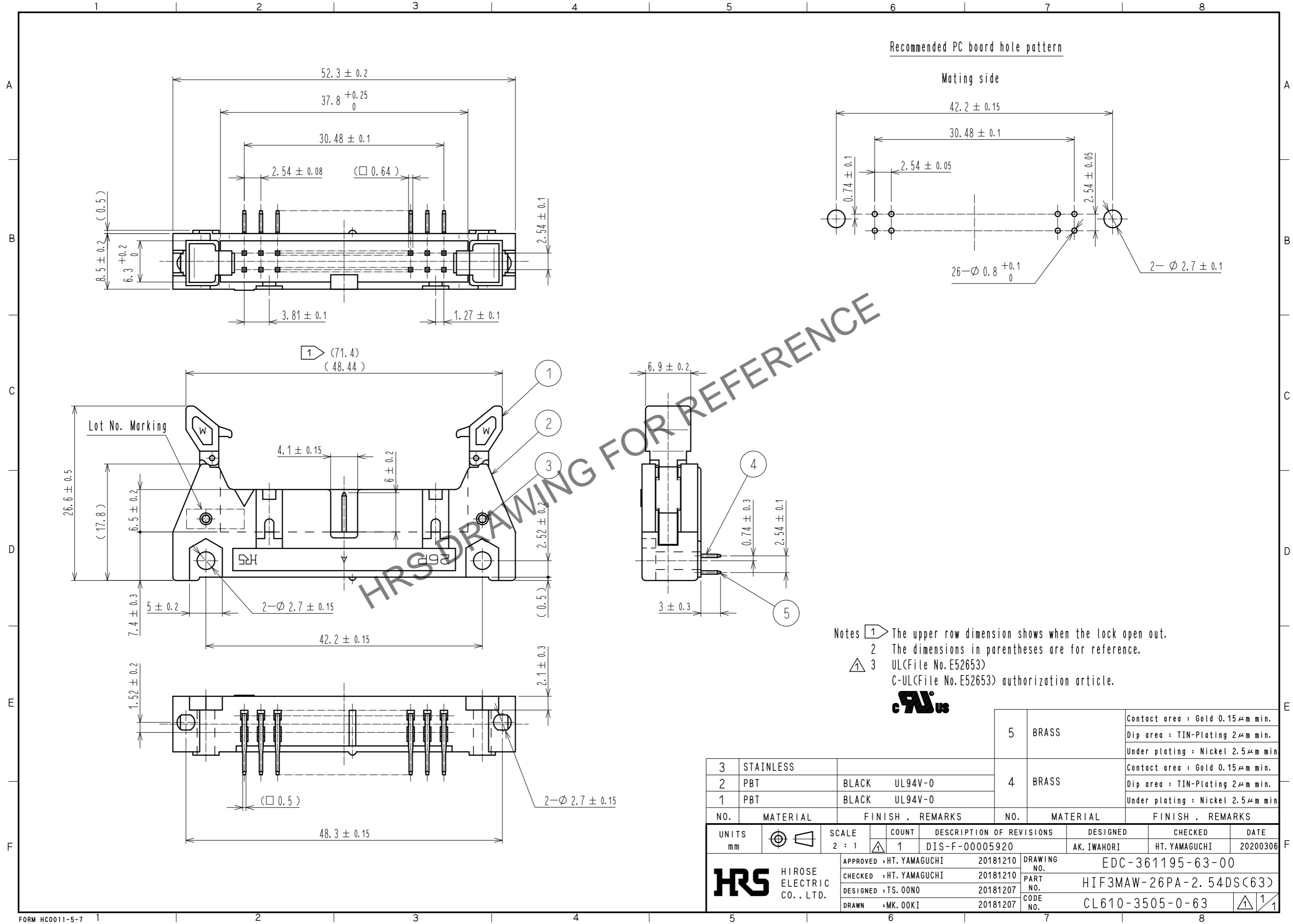


Jul.1.2024 Copyright 2024 HIROSE ELECTRIC CO., LTD. All Rights Reserved.
 In case of consideration for using Automotive equipment / device which demand high reliability, kindly contact our sales window correspondents.



3	STAINLESS			5	BRASS	Contact area : Gold 0.15 μm min. Dip area : TIN-Plating 2 μm min. Under plating : Nickel 2.5 μm min			
2	PBT	BLACK	UL94V-0	4	BRASS	Contact area : Gold 0.15 μm min. Dip area : TIN-Plating 2 μm min. Under plating : Nickel 2.5 μm min			
1	PBT	BLACK	UL94V-0						
NO.	MATERIAL	FINISH	REMARKS	NO.	MATERIAL	FINISH	REMARKS		
UNITS	mm	SCALE	2 : 1	COUNT	1	DESCRIPTION OF REVISIONS	DESIGNED	CHECKED	DATE
						DIS-F-00005920	AK. IWAHORI	HT. YAMAGUCHI	20200306
HRS HIROSE ELECTRIC CO., LTD.		APPROVED : HT. YAMAGUCHI 20181210		DRAWING NO.		EDC-361195-63-00			
		CHECKED : HT. YAMAGUCHI 20181210		PART NO.		HIF3MAW-26PA-2.54DS(63)			
		DESIGNED : TS. OONO 20181207		CODE NO.		CL610-3505-0-63			
		DRAWN : MK. OOKI 20181207							