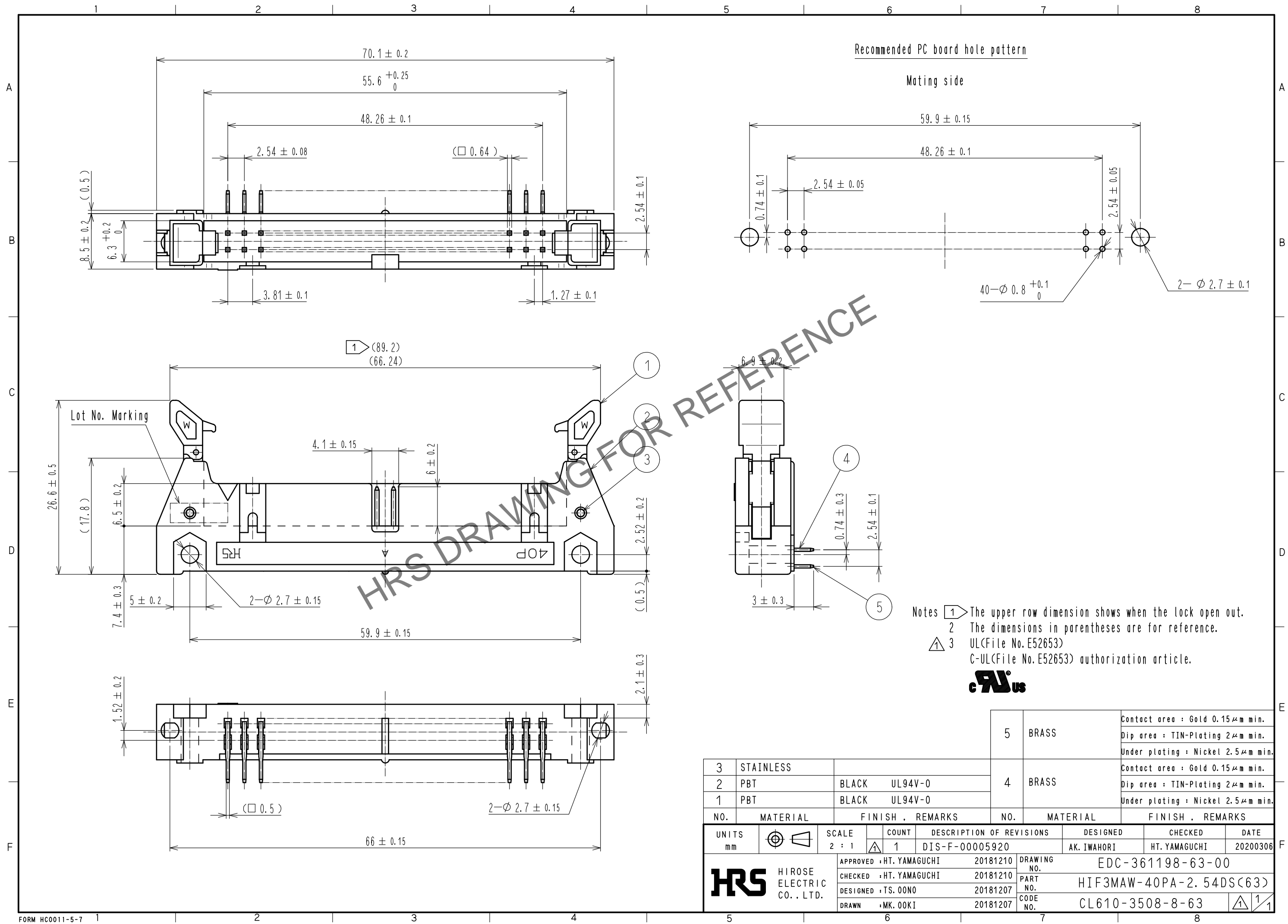


Jul.1.2024 Copyright 2024 HIROSE ELECTRIC CO., LTD. All Rights Reserved.  
 In case of consideration for using Automotive equipment / device which demand high reliability, kindly contact our sales window correspondents.



Notes 1 The upper row dimension shows when the lock open out.  
 2 The dimensions in parentheses are for reference.  
 3 UL(File No. E52653)  
 C-UL(File No. E52653) authorization article.



3	STAINLESS			5	BRASS	Contact area : Gold 0.15 μm min. Dip area : TIN-Plating 2 μm min. Under plating : Nickel 2.5 μm min.			
2	PBT	BLACK	UL94V-0	4	BRASS	Contact area : Gold 0.15 μm min. Dip area : TIN-Plating 2 μm min. Under plating : Nickel 2.5 μm min.			
1	PBT	BLACK	UL94V-0						
NO.	MATERIAL	FINISH	REMARKS	NO.	MATERIAL	FINISH	REMARKS		
UNITS	mm	SCALE	2 : 1	COUNT	1	DESCRIPTION OF REVISIONS	DESIGNED	CHECKED	DATE
						DIS-F-00005920	AK. IWAHORI	HT. YAMAGUCHI	20200306
APPROVED : HT. YAMAGUCHI		20181210		DRAWING NO.		EDC-361198-63-00			
CHECKED : HT. YAMAGUCHI		20181210		PART NO.		HIF3MAW-40PA-2.54DS(63)			
DESIGNED : TS. OONO		20181207		CODE NO.		CL610-3508-8-63			
DRAWN : MK. OKI		20181207							