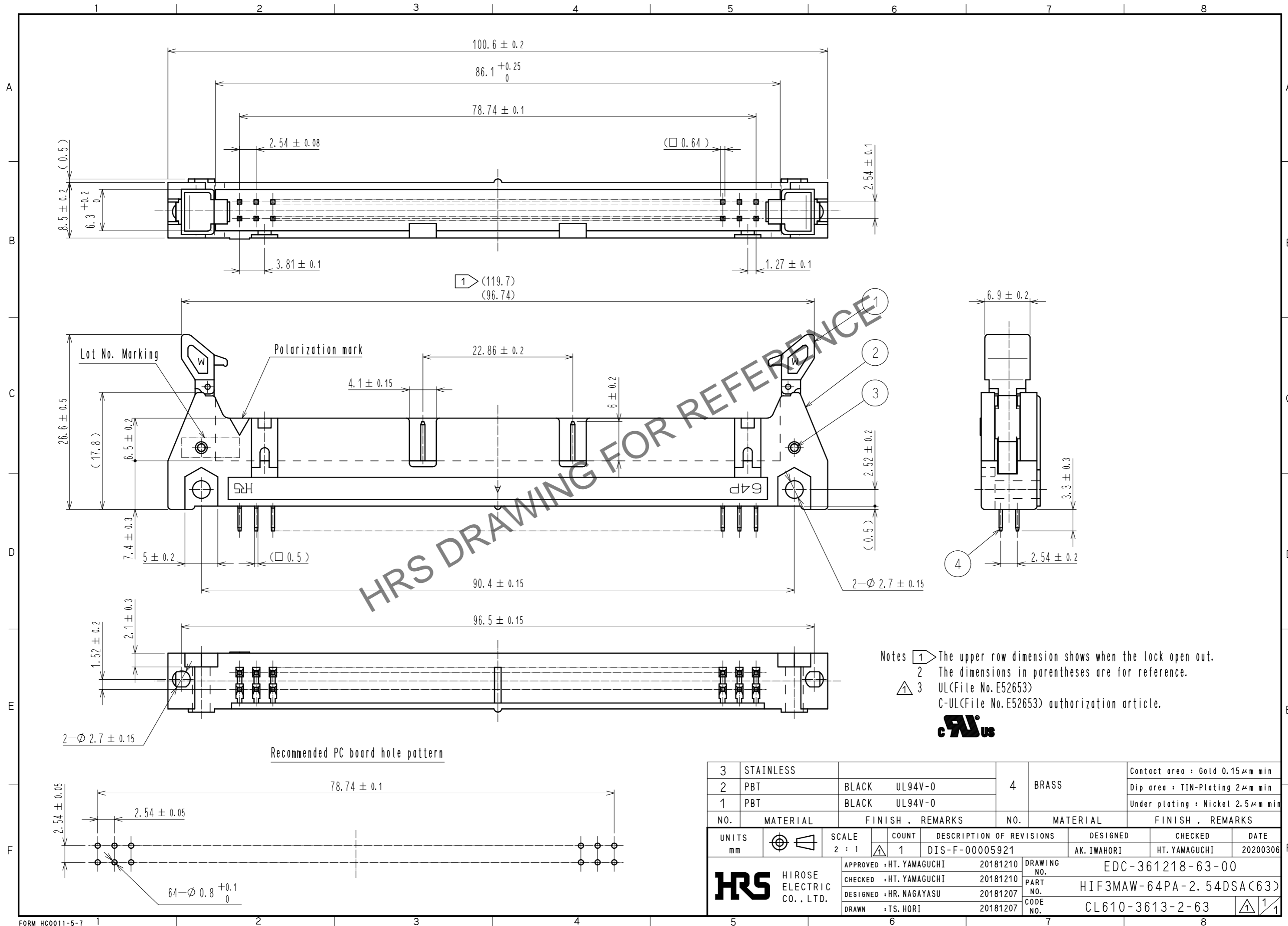


Jul.1.2024 Copyright 2024 HIROSE ELECTRIC CO., LTD. All Rights Reserved.
 In case of consideration for using Automotive equipment / device which demand high reliability, kindly contact our sales window correspondents.



Notes

- The upper row dimension shows when the lock open out.
- The dimensions in parentheses are for reference.
- UL(File No. E52653) C-UL(File No. E52653) authorization article.



3	STAINLESS			4	BRASS	Contact area : Gold 0.15μm min		
2	PBT	BLACK	UL94V-0			Dip area : TIN-Plating 2μm min		
1	PBT	BLACK	UL94V-0			Under plating : Nickel 2.5μm min		
NO.	MATERIAL	FINISH	REMARKS	NO.	MATERIAL	FINISH	REMARKS	
UNITS		SCALE	COUNT	DESCRIPTION OF REVISIONS		DESIGNED	CHECKED	DATE
mm		2 : 1	1	DIS-F-00005921		AK. IWAHORI	HT. YAMAGUCHI	20200306
HRS HIROSE ELECTRIC CO., LTD.		APPROVED : HT. YAMAGUCHI	20181210	DRAWING NO.		EDC-361218-63-00		
		CHECKED : HT. YAMAGUCHI	20181210	PART NO.		HIF3MAW-64PA-2.54DSA(63)		
		DESIGNED : HR. NAGAYASU	20181207	CODE NO.		CL610-3613-2-63		
		DRAWN : TS. HORI	20181207					