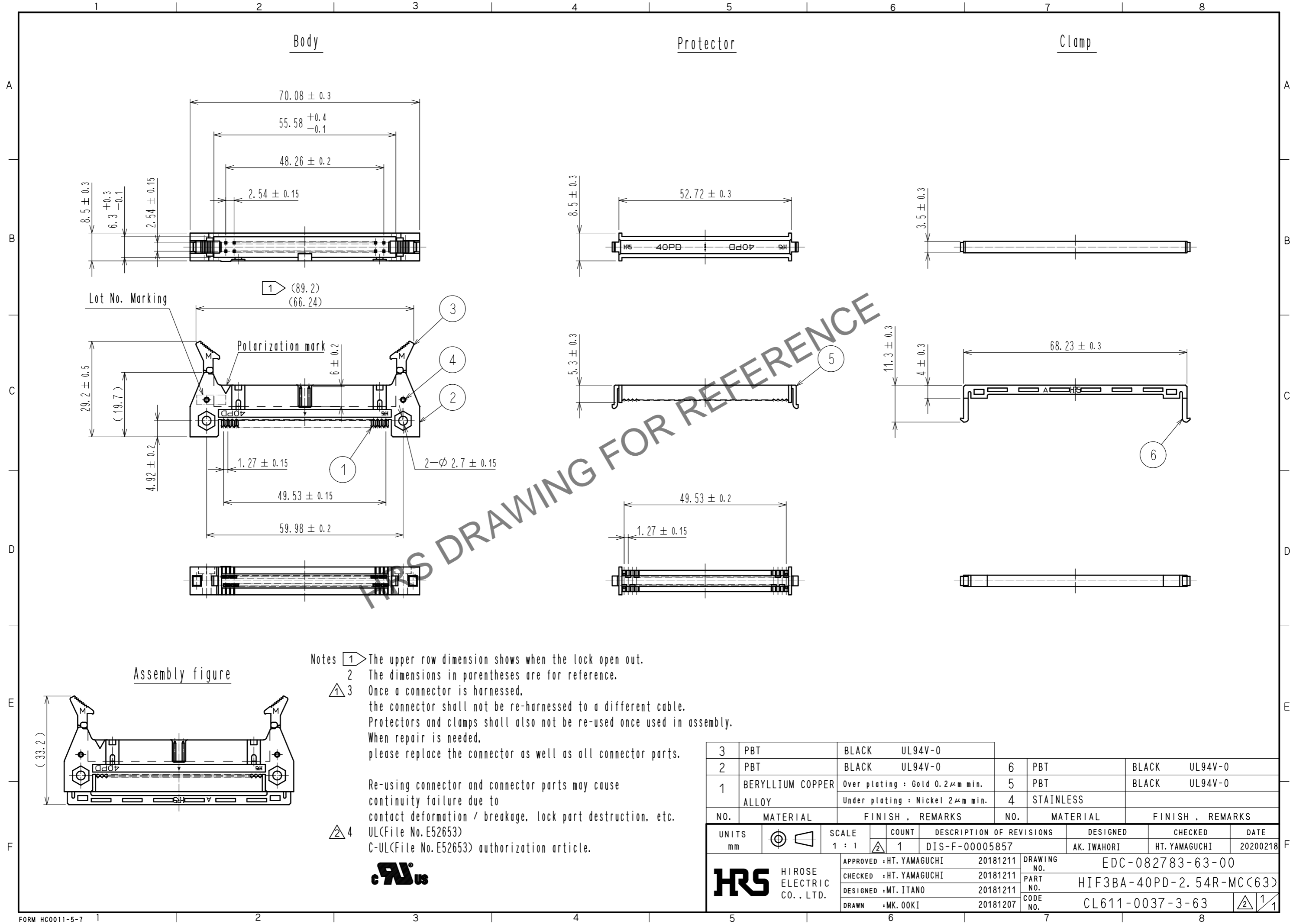


Jul.1.2024 Copyright 2024 HIROSE ELECTRIC CO., LTD. All Rights Reserved.
 In case of consideration for using Automotive equipment / device which demand high reliability, kindly contact our sales window correspondents.



Notes

- ① The upper row dimension shows when the lock open out.
- ② The dimensions in parentheses are for reference.
- ③ Once a connector is harnessed, the connector shall not be re-harnessed to a different cable. Protectors and clamps shall also not be re-used once used in assembly. When repair is needed, please replace the connector as well as all connector parts.
- ④ Re-using connector and connector parts may cause continuity failure due to contact deformation / breakage, lock part destruction, etc. UL(File No. E52653) C-UL(File No. E52653) authorization article.



NO.	MATERIAL	FINISH . REMARKS	NO.	MATERIAL	FINISH . REMARKS
3	PBT	BLACK UL94V-0	6	PBT	BLACK UL94V-0
2	PBT	BLACK UL94V-0	5	PBT	BLACK UL94V-0
1	BERYLLIUM COPPER ALLOY	Over plating : Gold 0.2μm min. Under plating : Nickel 2μm min.	4	STAINLESS	

UNITS	SCALE	COUNT	DESCRIPTION OF REVISIONS	DESIGNED	CHECKED	DATE
mm	1 : 1	1	DIS-F-00005857	AK. IWAHORI	HT. YAMAGUCHI	20200218

APPROVED	CHECKED	DESIGNED	DRAWN	DRAWING NO.	PART NO.	CODE NO.
HT. YAMAGUCHI 20181211	HT. YAMAGUCHI 20181211	MT. ITANO 20181211	MK. OOKI 20181207	EDC-082783-63-00	HIF3BA-40PD-2. 54R-MC(63)	CL611-0037-3-63