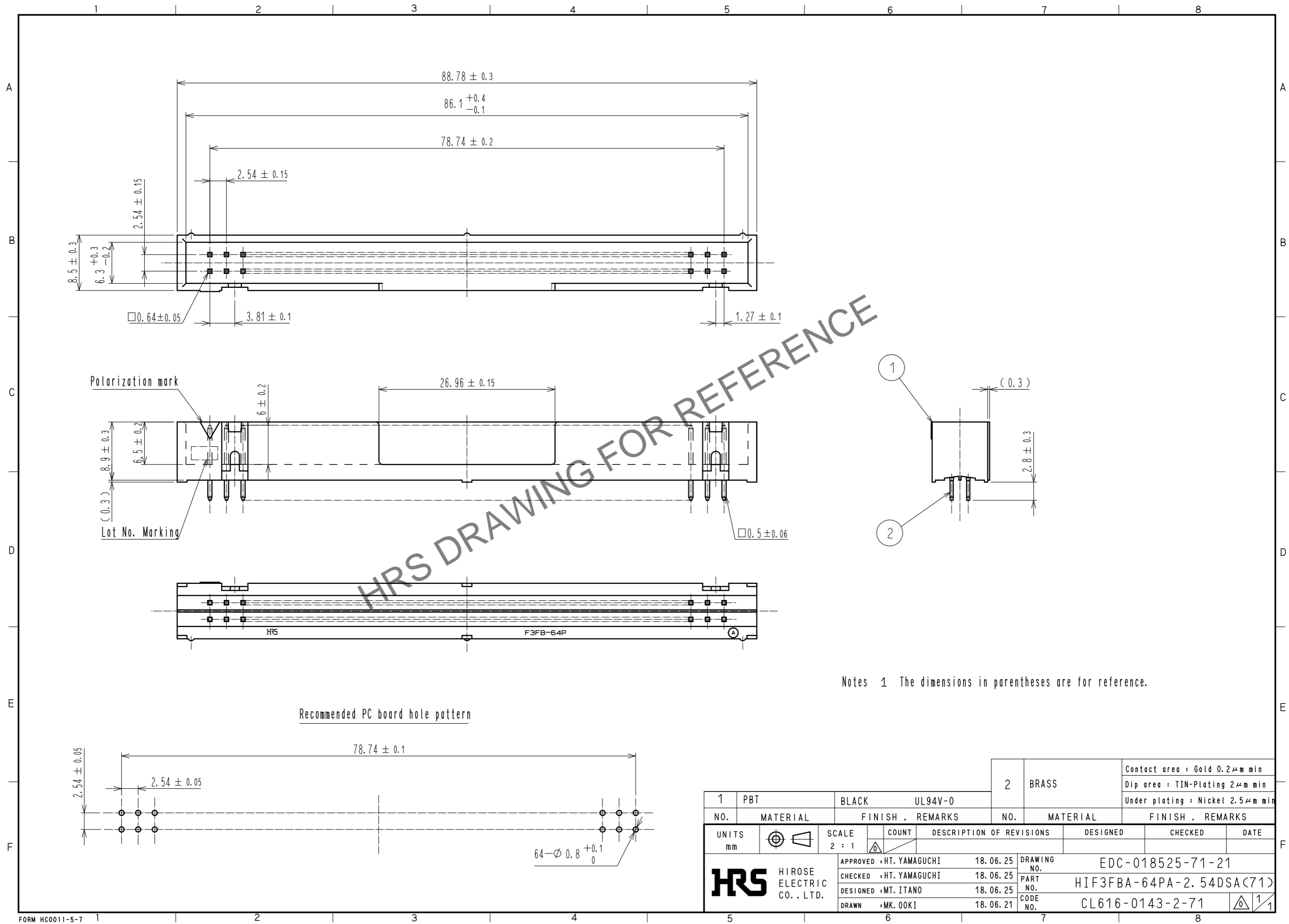


Aug.1.2024 Copyright 2024 HIROSE ELECTRIC CO., LTD. All Rights Reserved.
 In case of consideration for using Automotive equipment / device which demand high reliability, kindly contact our sales window correspondents.



HRS DRAWING FOR REFERENCE

Notes 1 The dimensions in parentheses are for reference.

Recommended PC board hole pattern

1	PBT	BLACK	UL94V-0	2	BRASS	Contact area : Gold $0.2 \mu\text{m}$ min Dip area : TIN-Plating $2 \mu\text{m}$ min Under plating : Nickel $2.5 \mu\text{m}$ min		
NO.	MATERIAL	FINISH	REMARKS	NO.	MATERIAL	FINISH . REMARKS		
UNITS		SCALE	COUNT	DESCRIPTION OF REVISIONS		DESIGNED	CHECKED	DATE
mm		2 : 1	Δ					
HRS HIROSE ELECTRIC CO., LTD.		APPROVED : HT. YAMAGUCHI	18.06.25	DRAWING NO. EDC-018525-71-21				
		CHECKED : HT. YAMAGUCHI	18.06.25	PART NO. HIF3FBA-64PA-2.54DSA(71)				
		DESIGNED : MT. ITANO	18.06.25	CODE NO. CL616-0143-2-71				
		DRAWN : MK. OKI	18.06.21					