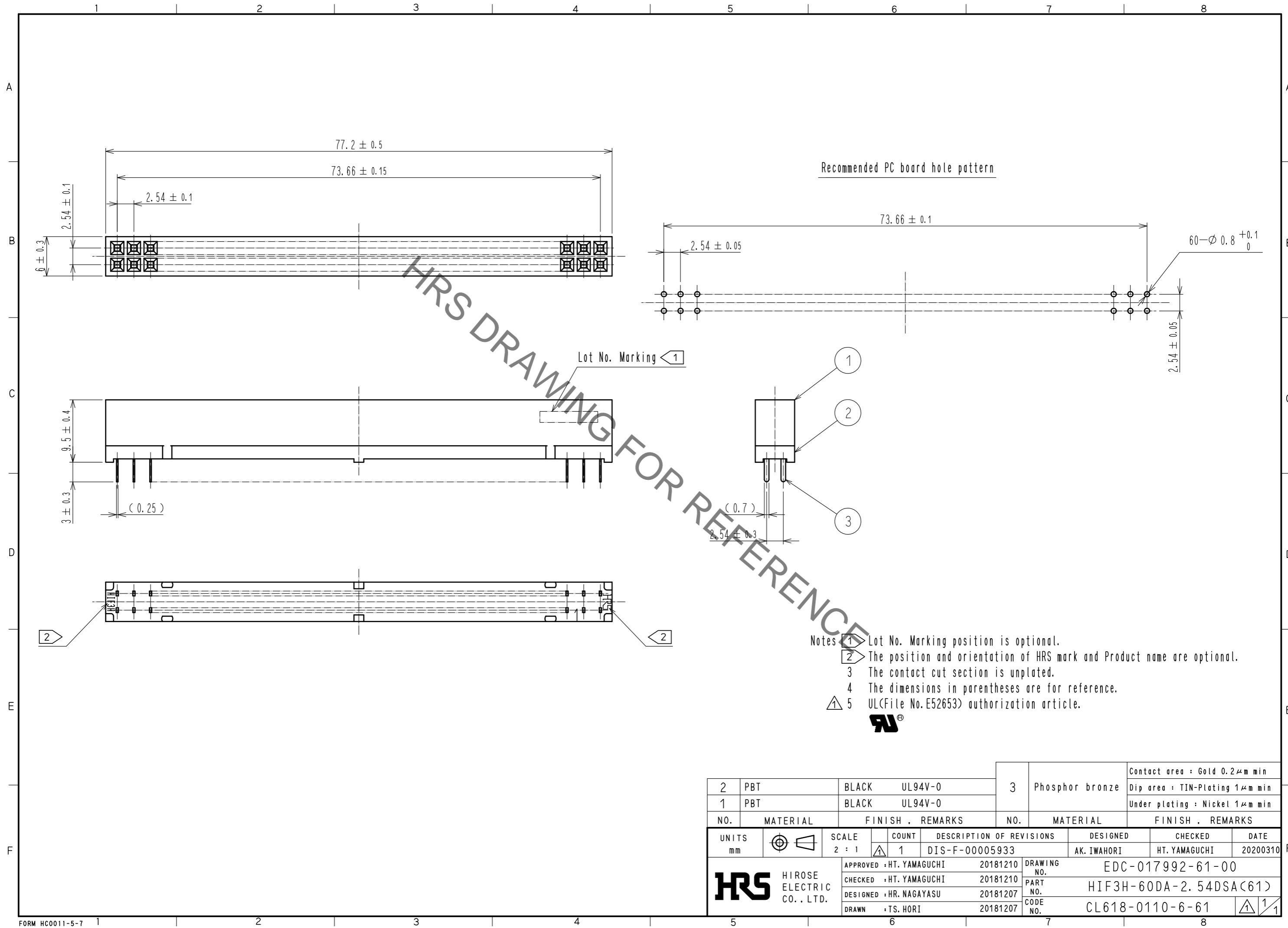


Jan.1.2022 Copyright 2022 HIROSE ELECTRIC CO., LTD. All Rights Reserved.  
In case of consideration for using Automotive equipment / device which demand high reliability, kindly contact our sales window correspondents.



HRS DRAWING FOR REFERENCE

- Notes
- ① Lot No. Marking position is optional.
  - ② The position and orientation of HRS mark and Product name are optional.
  - ③ The contact cut section is unplated.
  - ④ The dimensions in parentheses are for reference.
  - ⚠ 5 UL(File No. E52653) authorization article.



2	PBT	BLACK	UL94V-0	3	Phosphor bronze	Contact area : Gold 0.2 $\mu$ m min		
1	PBT	BLACK	UL94V-0			Dip area : TIN-Plating 1 $\mu$ m min		
						Under plating : Nickel 1 $\mu$ m min		
NO.	MATERIAL	FINISH . REMARKS		NO.	MATERIAL	FINISH . REMARKS		
UNITS		SCALE	COUNT	DESCRIPTION OF REVISIONS		DESIGNED	CHECKED	DATE
mm		2 : 1	1	DIS-F-00005933		AK. IWAHORI	HT. YAMAGUCHI	20200310
<b>HRS</b> HIROSE ELECTRIC CO., LTD.		APPROVED : HT. YAMAGUCHI	20181210	DRAWING NO. EDC-017992-61-00				
		CHECKED : HT. YAMAGUCHI	20181210	PART NO. HIF3H-60DA-2.54DSA(61)				
		DESIGNED : HR. NAGAYASU	20181207	CODE NO. CL618-0110-6-61				
		DRAWN : TS. HORI	20181207					