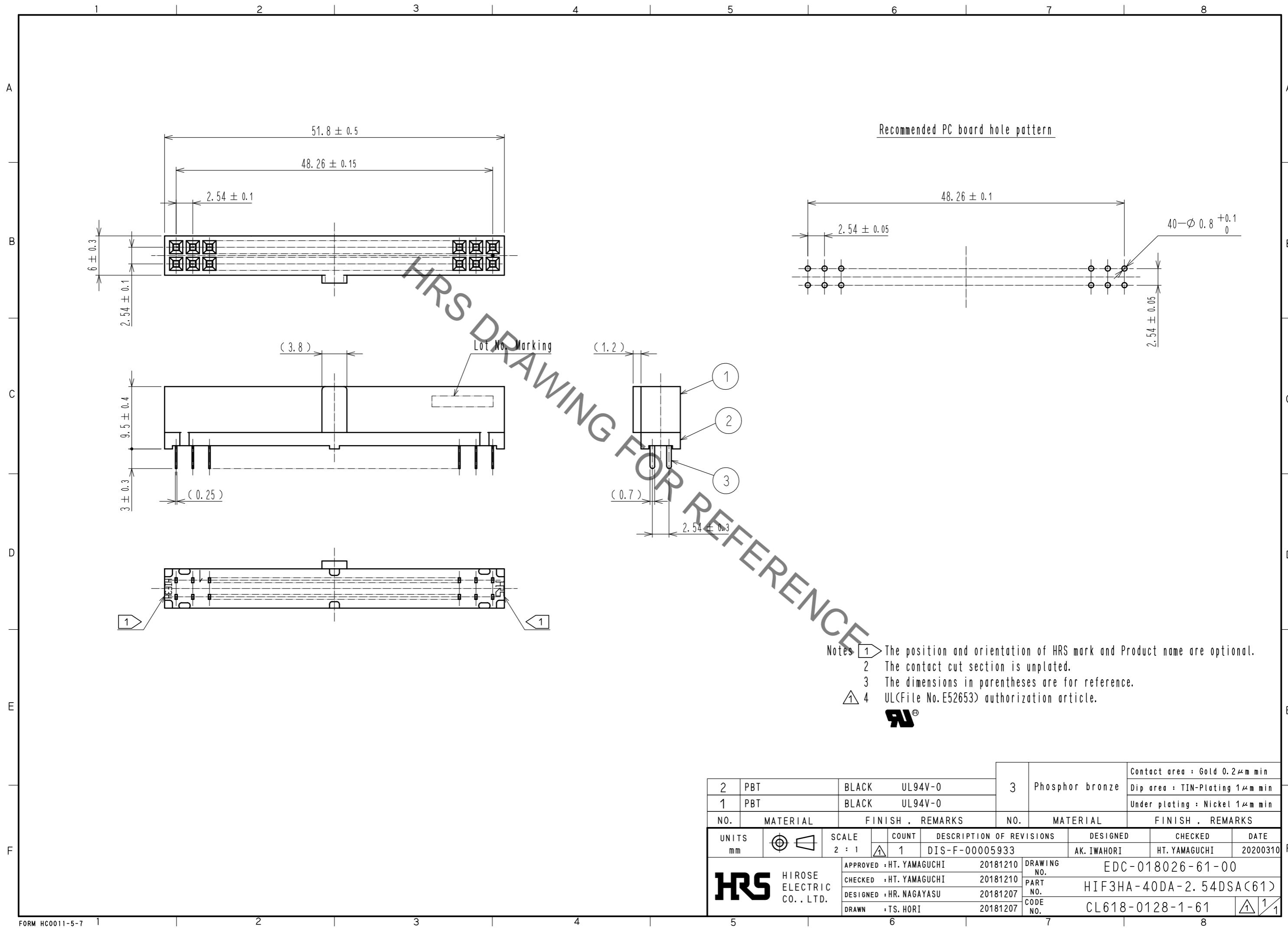


Dec.1.2021 Copyright 2021 HIROSE ELECTRIC CO., LTD. All Rights Reserved.  
In case of consideration for using Automotive equipment / device which demand high reliability, kindly contact our sales window correspondents.



- Notes
- 1 The position and orientation of HRS mark and Product name are optional.
  - 2 The contact cut section is unplated.
  - 3 The dimensions in parentheses are for reference.
  - 4 UL(File No.E52653) authorization article.



| 2                                    | PBT      | BLACK                    | UL94V-0  | 3                                | Phosphor bronze | Contact area : Gold 0.2μm min  |
|--------------------------------------|----------|--------------------------|----------|----------------------------------|-----------------|--------------------------------|
| 1                                    | PBT      | BLACK                    | UL94V-0  |                                  |                 | Dip area : TIN-Plating 1μm min |
|                                      |          |                          |          |                                  |                 | Under plating : Nickel 1μm min |
| NO.                                  | MATERIAL | FINISH . REMARKS         |          | NO.                              | MATERIAL        | FINISH . REMARKS               |
| UNITS                                |          | SCALE                    | COUNT    | DESCRIPTION OF REVISIONS         |                 | DESIGNED                       |
| mm                                   |          | 2 : 1                    | 1        | DIS-F-00005933                   |                 | AK. IWAHORI                    |
| <b>HRS</b> HIROSE ELECTRIC CO., LTD. |          | APPROVED : HT. YAMAGUCHI | 20181210 | DRAWING NO. EDC-018026-61-00     |                 | CHECKED                        |
|                                      |          | CHECKED : HT. YAMAGUCHI  | 20181210 | PART NO. HIF3HA-40DA-2.54DSA(61) |                 | HT. YAMAGUCHI                  |
|                                      |          | DESIGNED : HR. NAGAYASU  | 20181207 | CODE NO. CL618-0128-1-61         |                 | DATE                           |
|                                      |          | DRAWN : TS. HORI         | 20181207 |                                  |                 | 20200310                       |