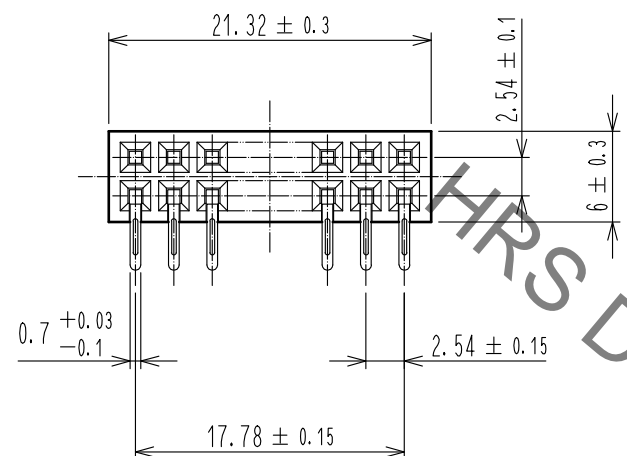
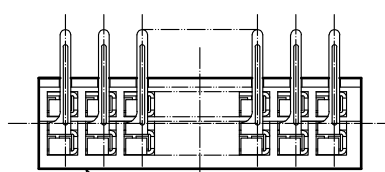
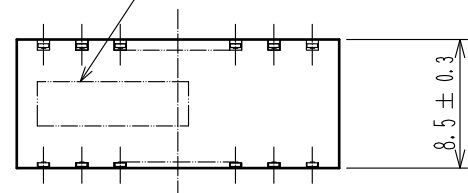


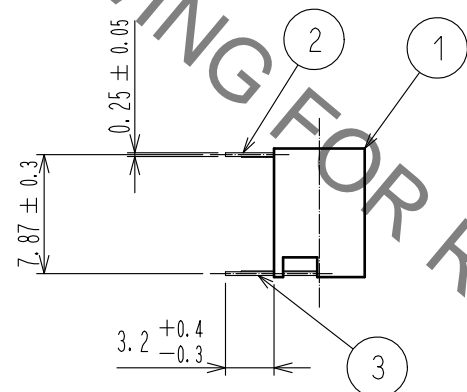
Jun.1.2021 Copyright 2021 HIROSE ELECTRIC CO., LTD. All Rights Reserved.
In case of consideration for using Automotive equipment / device which demand high reliability, kindly contact our sales window correspondents.



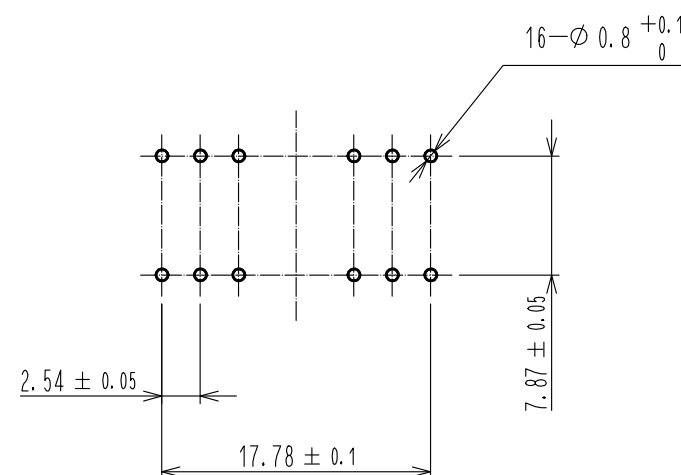
Lot No. Marking (Back side)



Lot No. Marking



Recommended PC board hole pattern



Notes 1 The contact cut section is unplated.
2 UL(File No. E52653) authorization article.



2	Phosphor bronze	Contact area : Gold 0.2μm min Dip area : TIN-Plating 1μm min Under plating : Nickel 1μm min	3	Phosphor bronze	Contact area : Gold 0.2μm min Dip area : TIN-Plating 1μm min Under plating : Nickel 1μm min			
1	PBT	BLACK UL94V-0						
NO.	MATERIAL	FINISH . REMARKS	NO.	MATERIAL	FINISH . REMARKS			
UNITS		SCALE	COUNT	DESCRIPTION OF REVISIONS		DESIGNED	CHECKED	DATE
mm		2 : 1	1	DIS-F-00005935		AK. IWAHORI	HT. YAMAGUCHI	20200310
HRS HIROSE ELECTRIC CO., LTD.		APPROVED : HT. YAMAGUCHI 20181210	DRAWING NO. EDC-018032-61-00					
		CHECKED : HT. YAMAGUCHI 20181210	PART NO. HIF3H-16DB-2.54DS(61)					
		DESIGNED : TS. OONO 20181207	CODE NO. CL618-0142-2-61					
		DRAWN : MK. OKI 20181207						