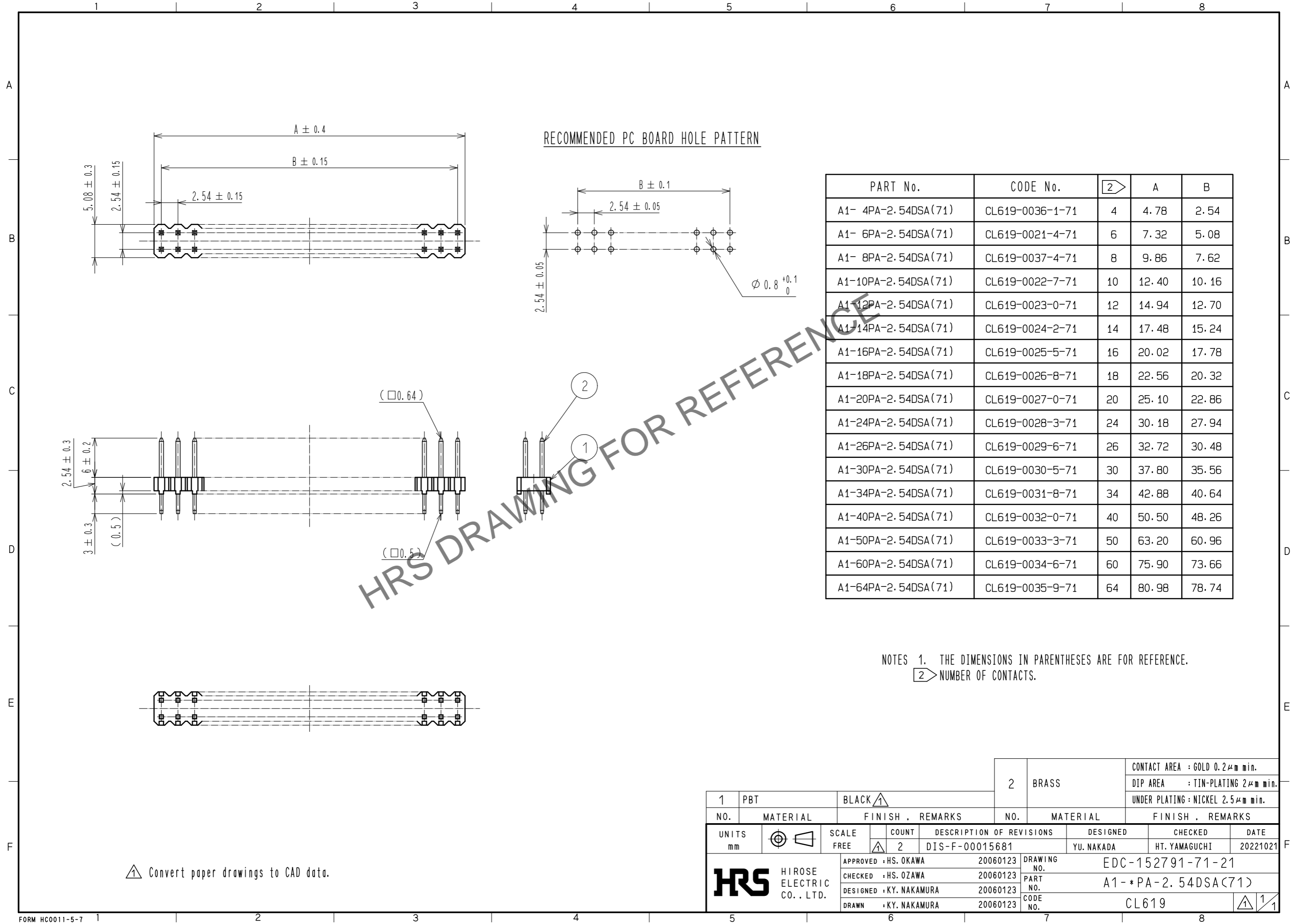


Mar.1.2025 Copyright 2025 HIROSE ELECTRIC CO., LTD. All Rights Reserved.
In case of consideration for using Automotive equipment / device which demand high reliability, kindly contact our sales window correspondents.



| PART No. | CODE No. | 2 | A | B |
|---------------------|-----------------|---|-------|-------|
| A1- 4PA-2.54DSA(71) | CL619-0036-1-71 | 4 | 4.78 | 2.54 |
| A1- 6PA-2.54DSA(71) | CL619-0021-4-71 | 6 | 7.32 | 5.08 |
| A1- 8PA-2.54DSA(71) | CL619-0037-4-71 | 8 | 9.86 | 7.62 |
| A1-10PA-2.54DSA(71) | CL619-0022-7-71 | 10 | 12.40 | 10.16 |
| A1-12PA-2.54DSA(71) | CL619-0023-0-71 | 12 | 14.94 | 12.70 |
| A1-14PA-2.54DSA(71) | CL619-0024-2-71 | 14 | 17.48 | 15.24 |
| A1-16PA-2.54DSA(71) | CL619-0025-5-71 | 16 | 20.02 | 17.78 |
| A1-18PA-2.54DSA(71) | CL619-0026-8-71 | 18 | 22.56 | 20.32 |
| A1-20PA-2.54DSA(71) | CL619-0027-0-71 | 20 | 25.10 | 22.86 |
| A1-24PA-2.54DSA(71) | CL619-0028-3-71 | 24 | 30.18 | 27.94 |
| A1-26PA-2.54DSA(71) | CL619-0029-6-71 | 26 | 32.72 | 30.48 |
| A1-30PA-2.54DSA(71) | CL619-0030-5-71 | 30 | 37.80 | 35.56 |
| A1-34PA-2.54DSA(71) | CL619-0031-8-71 | 34 | 42.88 | 40.64 |
| A1-40PA-2.54DSA(71) | CL619-0032-0-71 | 40 | 50.50 | 48.26 |
| A1-50PA-2.54DSA(71) | CL619-0033-3-71 | 50 | 63.20 | 60.96 |
| A1-60PA-2.54DSA(71) | CL619-0034-6-71 | 60 | 75.90 | 73.66 |
| A1-64PA-2.54DSA(71) | CL619-0035-9-71 | 64 | 80.98 | 78.74 |

NOTES 1. THE DIMENSIONS IN PARENTHESES ARE FOR REFERENCE.
2 NUMBER OF CONTACTS.

1 Convert paper drawings to CAD data.

| | | | | | | | | |
|--------------------------------------|--|---|--|--|--|--------------------------------|--------------------------|---|
| 1 PBT | | BLACK 1 | | 2 BRASS | | CONTACT AREA : GOLD 0.2μm min. | | |
| NO. MATERIAL | | FINISH . REMARKS | | NO. MATERIAL | | FINISH . REMARKS | | |
| UNITS mm | | SCALE FREE | COUNT 2 | DESCRIPTION OF REVISIONS DIS-F-00015681 | | DESIGNED YU. NAKADA | CHECKED HT. YAMAGUCHI | DATE 20221021 |
| HRS HIROSE ELECTRIC CO., LTD. | | APPROVED : HS. OKAWA | 20060123 | DRAWING NO. EDC-152791-71-21 | | PART NO. A1-*PA-2.54DSA(71) | | 1 / 1 |
| | | CHECKED : HS. OZAWA | 20060123 | CODE NO. CL619 | | | | |
| | | DESIGNED : KY. NAKAMURA | 20060123 | | | | | |
| | | DRAWN : KY. NAKAMURA | 20060123 | | | | | |