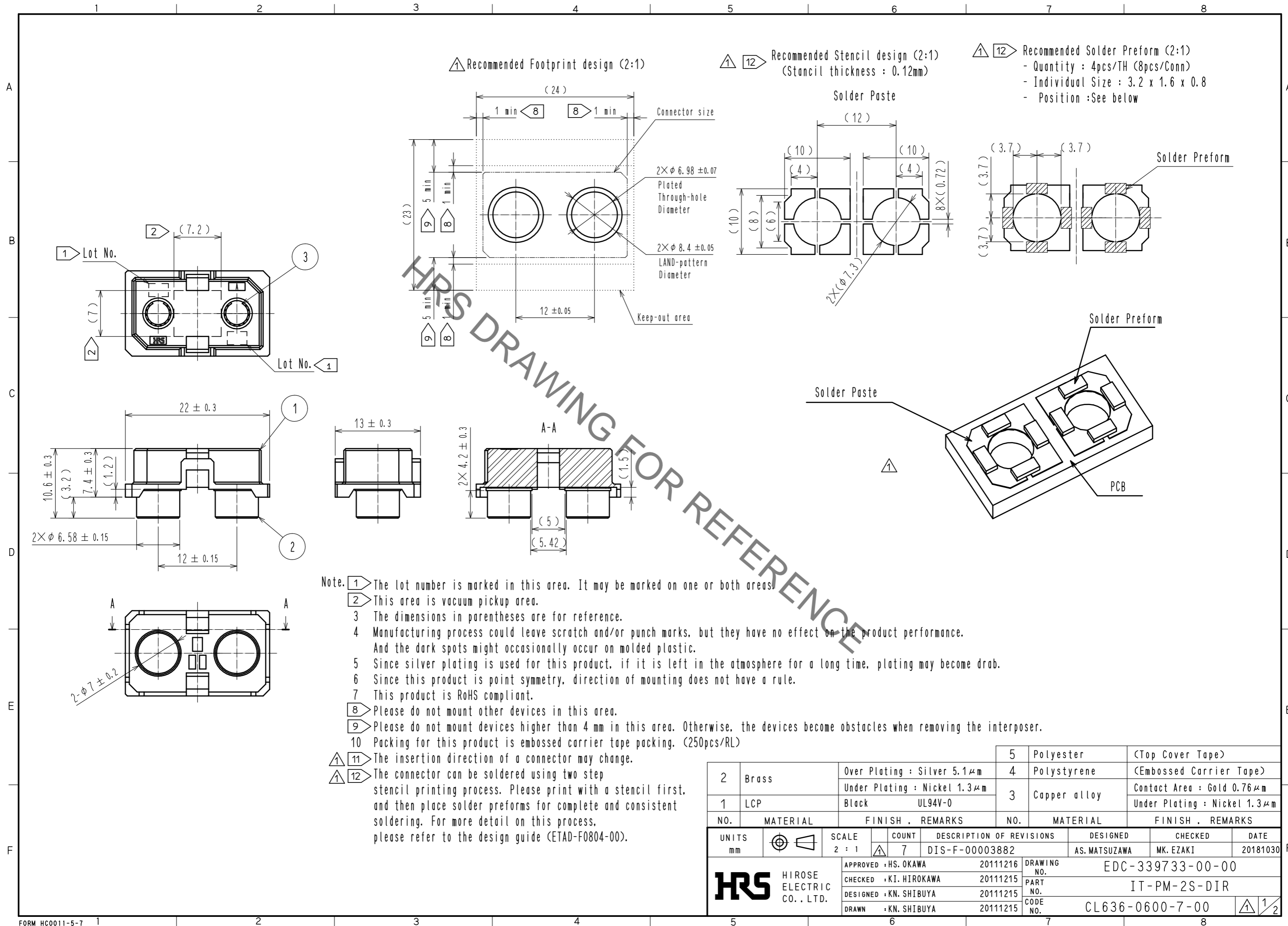


Jun.1.2021 Copyright 2021 HIROSE ELECTRIC CO., LTD. All Rights Reserved.
In case of consideration for using Automotive equipment / device which demand high reliability, kindly contact our sales window correspondents.



△ Recommended Footprint design (2:1)

△ 12 Recommended Stencil design (2:1)
(Stencil thickness : 0.12mm)

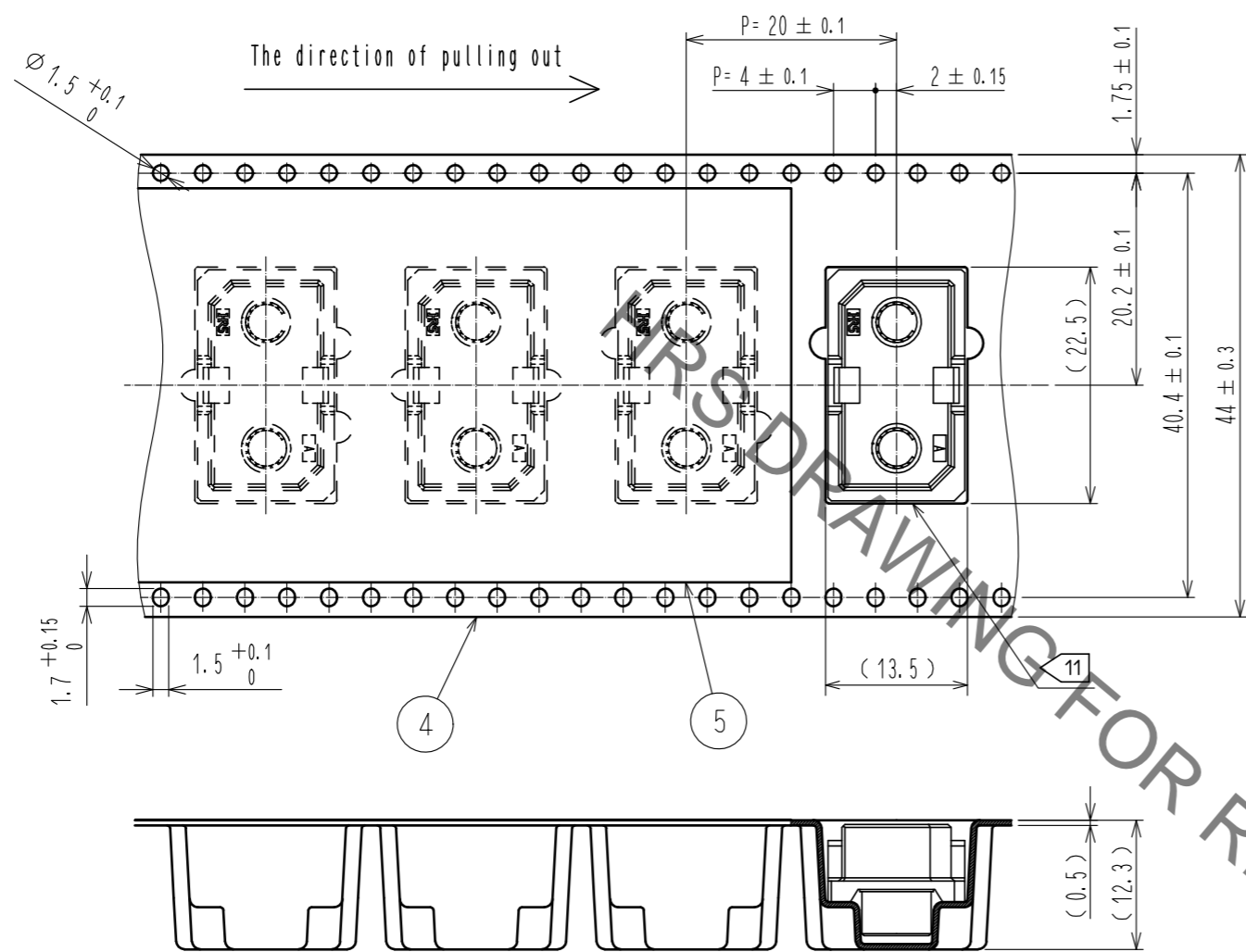
△ 12 Recommended Solder Preform (2:1)
- Quantity : 4pcs/TH (8pcs/Conn)
- Individual Size : 3.2 x 1.6 x 0.8
- Position : See below

- Note.
- 1 The lot number is marked in this area. It may be marked on one or both areas.
 - 2 This area is vacuum pickup area.
 - 3 The dimensions in parentheses are for reference.
 - 4 Manufacturing process could leave scratch and/or punch marks, but they have no effect on the product performance. And the dark spots might occasionally occur on molded plastic.
 - 5 Since silver plating is used for this product, if it is left in the atmosphere for a long time, plating may become drab.
 - 6 Since this product is point symmetry, direction of mounting does not have a rule.
 - 7 This product is RoHS compliant.
 - 8 Please do not mount other devices in this area.
 - 9 Please do not mount devices higher than 4 mm in this area. Otherwise, the devices become obstacles when removing the interposer.
 - 10 Packing for this product is embossed carrier tape packing. (250pcs/RL)
 - △ 11 The insertion direction of a connector may change.
 - △ 12 The connector can be soldered using two step stencil printing process. Please print with a stencil first, and then place solder preforms for complete and consistent soldering. For more detail on this process, please refer to the design guide (ETAD-F0804-00).

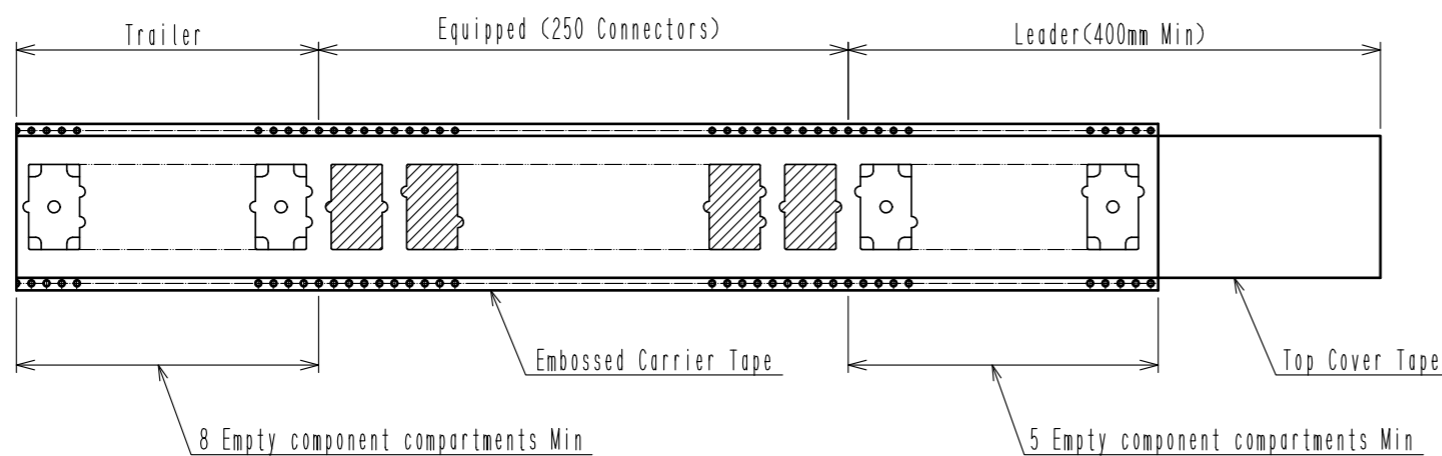
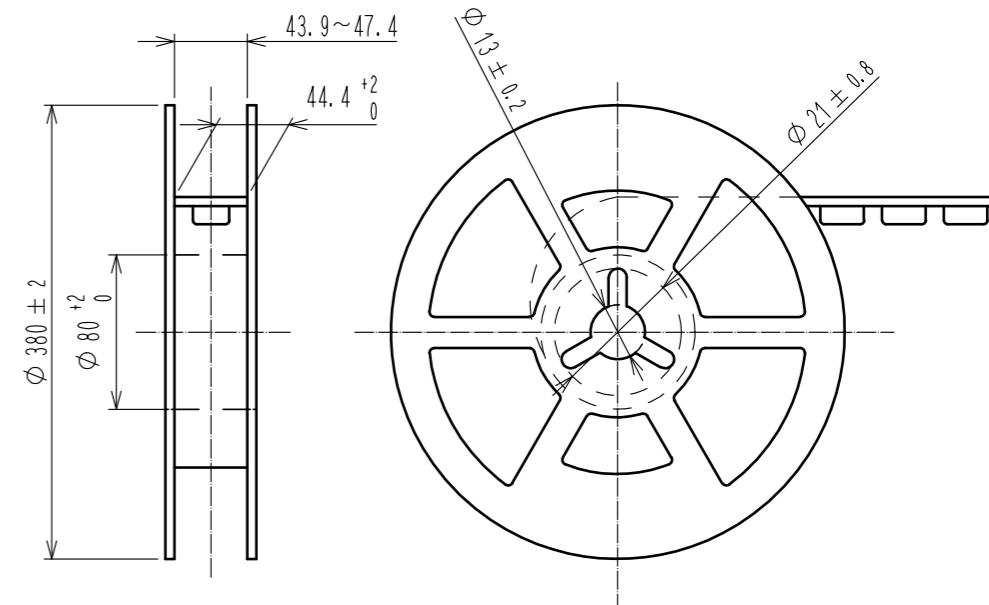
2	Brass	Over Plating : Silver 5.1μm	5	Polyester	(Top Cover Tape)
		Under Plating : Nickel 1.3μm	4	Polystyrene	(Embossed Carrier Tape)
1	LCP	Black UL94V-0	3	Copper alloy	Contact Area : Gold 0.76μm
					Under Plating : Nickel 1.3μm
NO.	MATERIAL	FINISH . REMARKS	NO.	MATERIAL	FINISH . REMARKS
UNITS	mm	SCALE	2 : 1	COUNT	7
		DESCRIPTION OF REVISIONS	DESIGNED	CHECKED	DATE
		DIS-F-00003882	AS. MATSUZAWA	MK. EZAKI	20181030
APPROVED : HS. OKAWA		20111216	DRAWING NO. EDC-339733-00-00		
CHECKED : KI. HIROKAWA		20111215	PART NO. IT-PM-2S-DIR		
DESIGNED : KN. SHIBUYA		20111215	CODE NO. CL636-0600-7-00		
DRAWN : KN. SHIBUYA		20111215	△ 1/2		

Jun.1.2021 Copyright 2021 HIROSE ELECTRIC CO., LTD. All Rights Reserved.
 In case of consideration for using Automotive equipment / device which demand high reliability, kindly contact our sales window correspondents.

Drawing For Packing (Free)



Reeling Dimension (Free)



⚠ Delete

HRS	DRAWING NO.	EDC-339733-00-00	2/2
	PART NO.	IT-PM-2S-DIR	
	CODE NO.	CL636-0600-7-00	