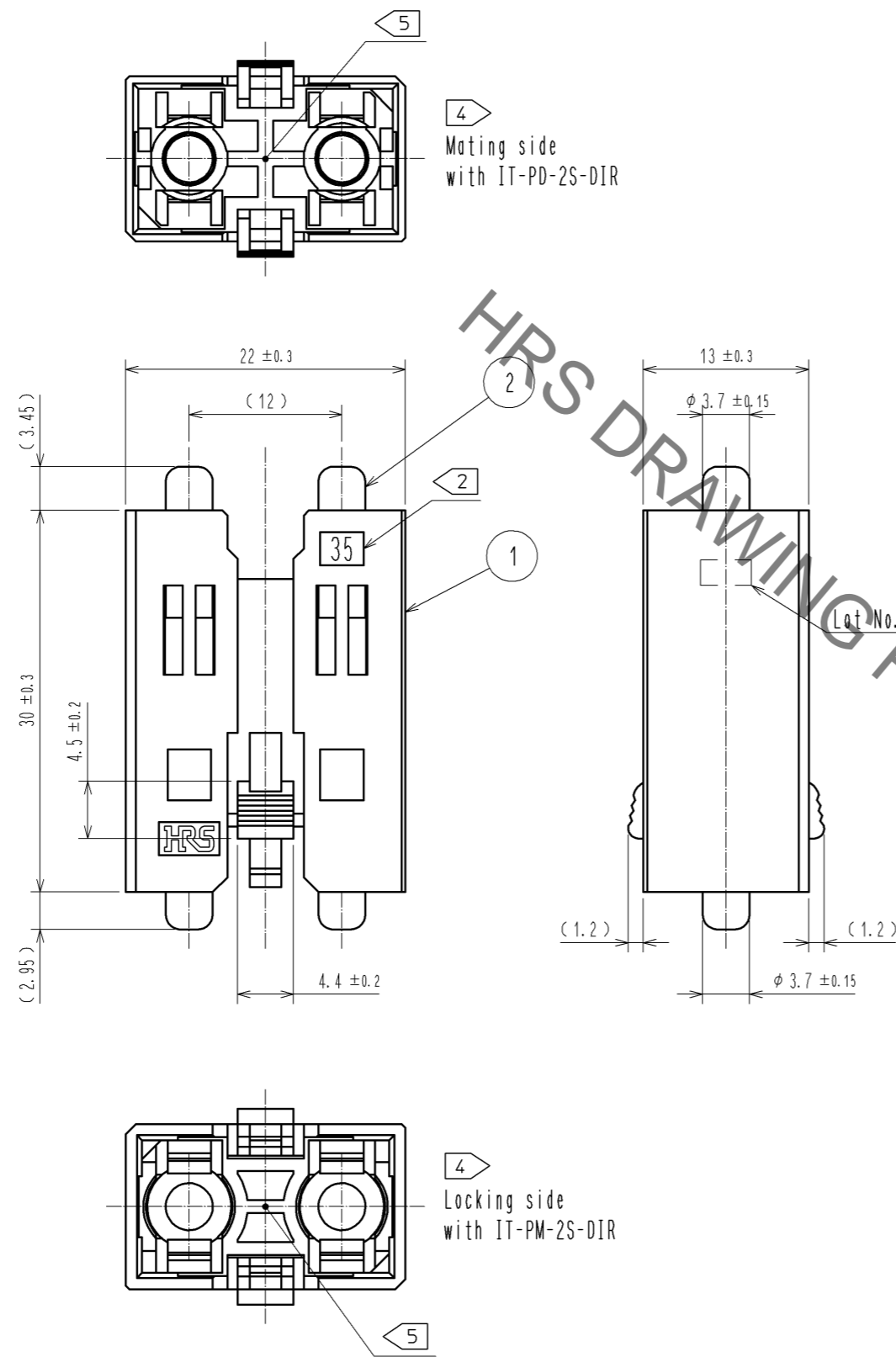
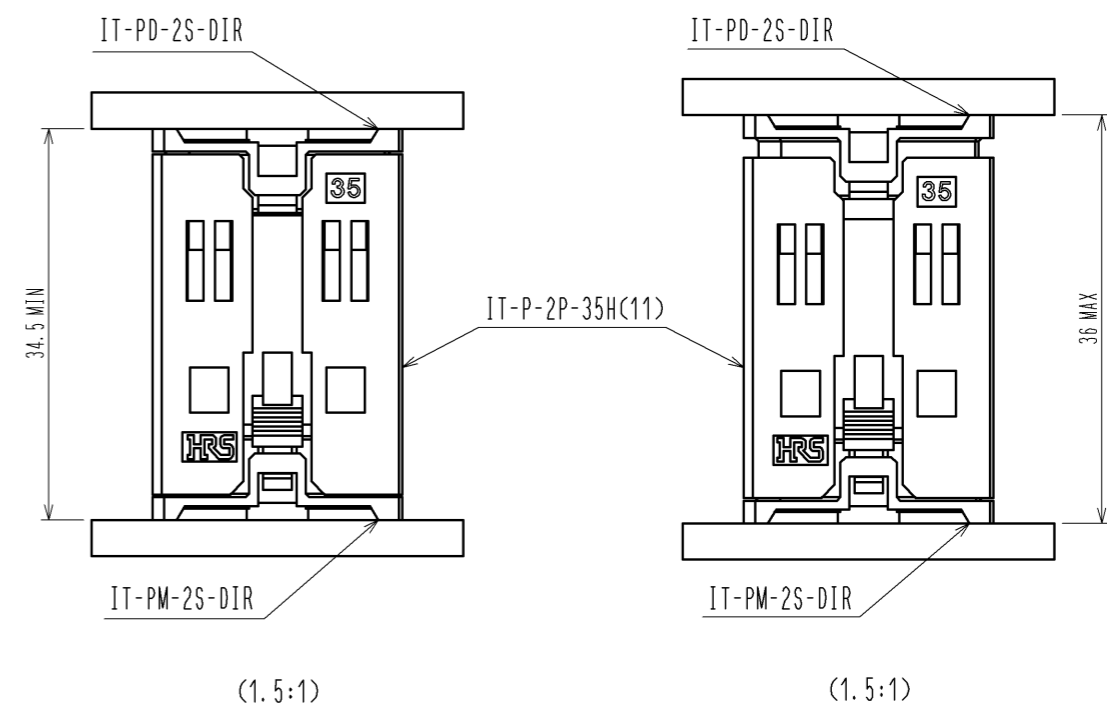


Jun.1.2021 Copyright 2021 HIROSE ELECTRIC CO., LTD. All Rights Reserved.
In case of consideration for using Automotive equipment / device which demand high reliability, kindly contact our sales window correspondents.



△ 10 PCB BOARD TO BOARD STACKING HEIGHT RANGE

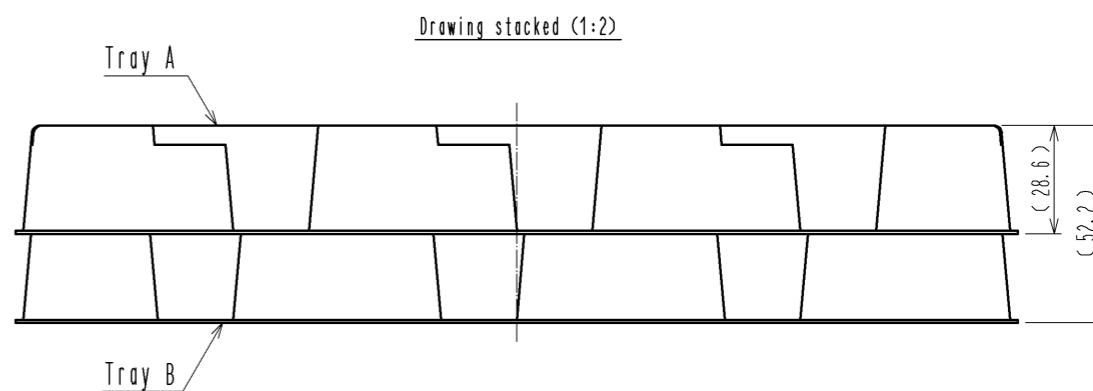
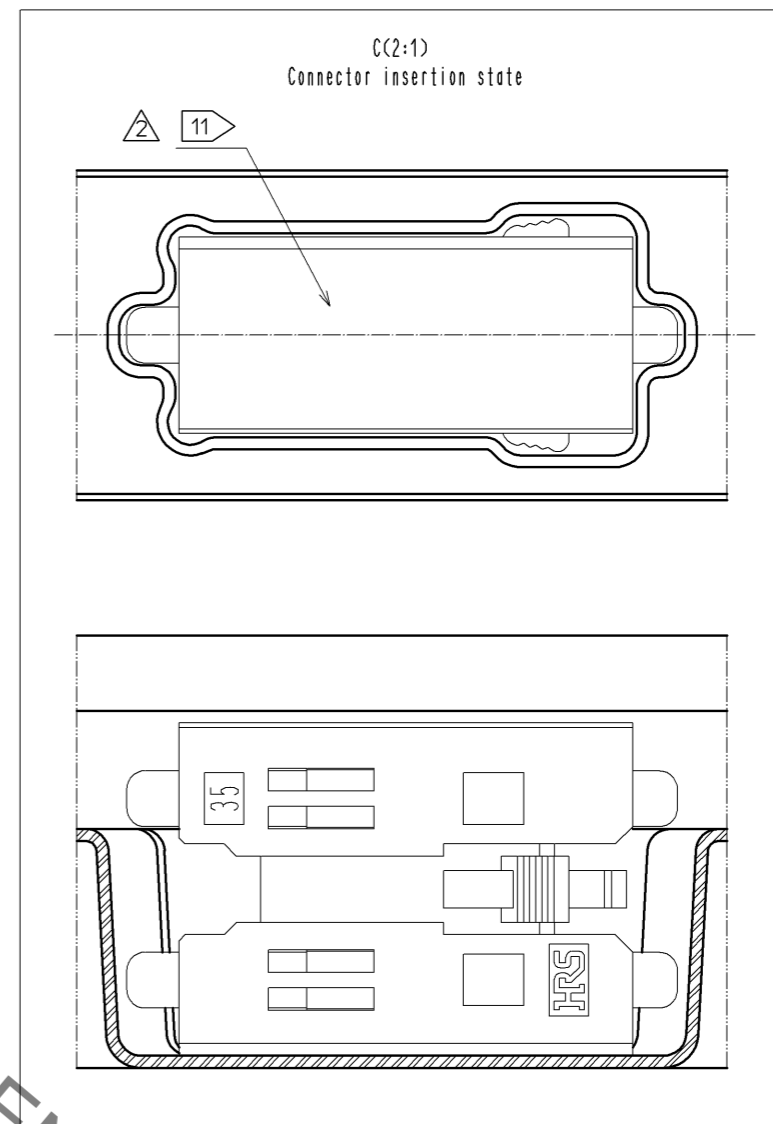
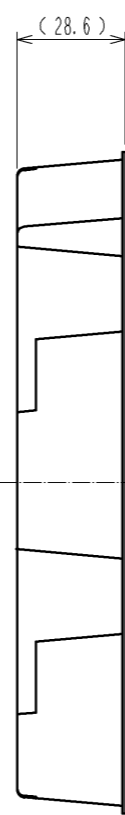
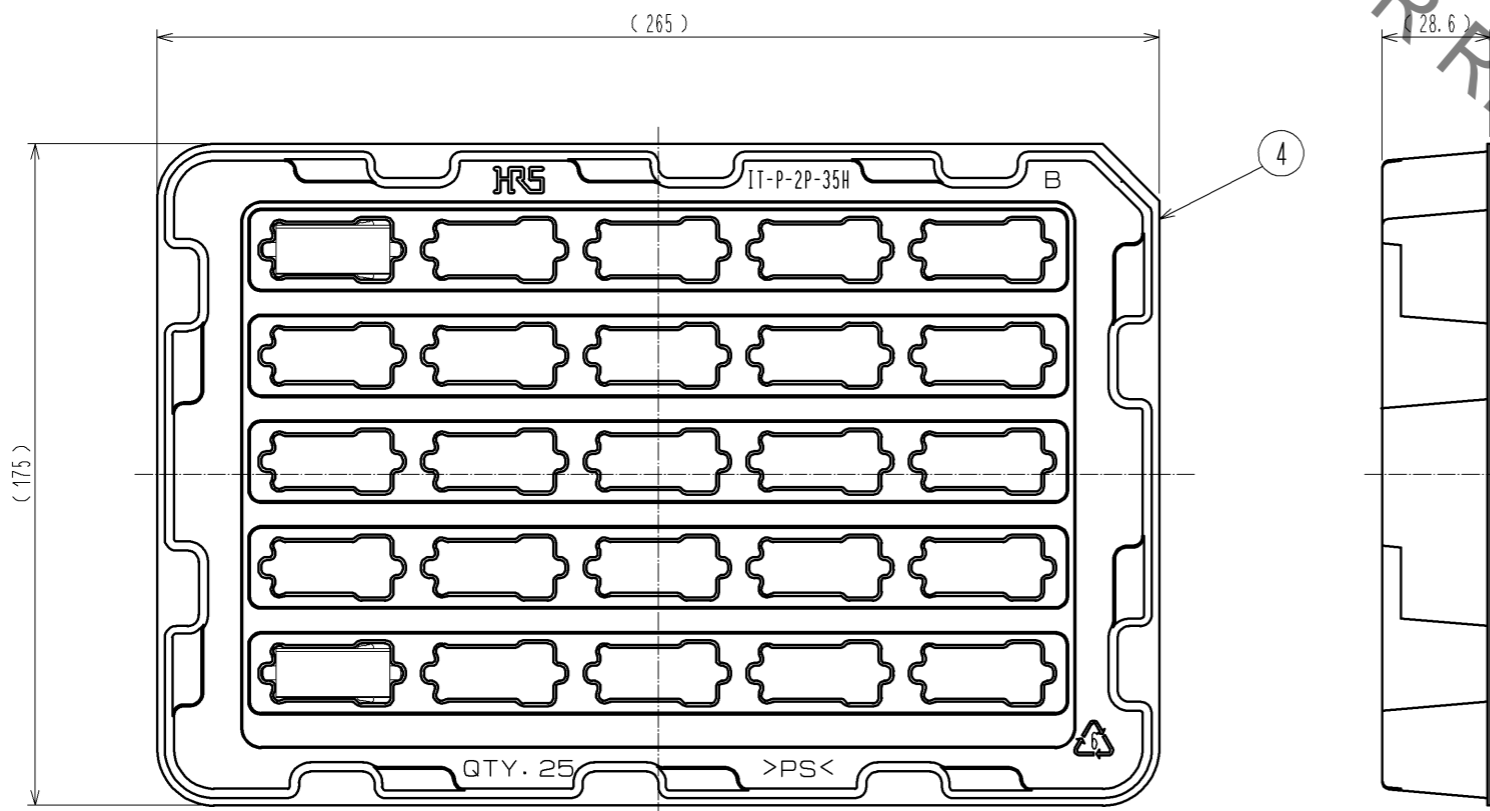
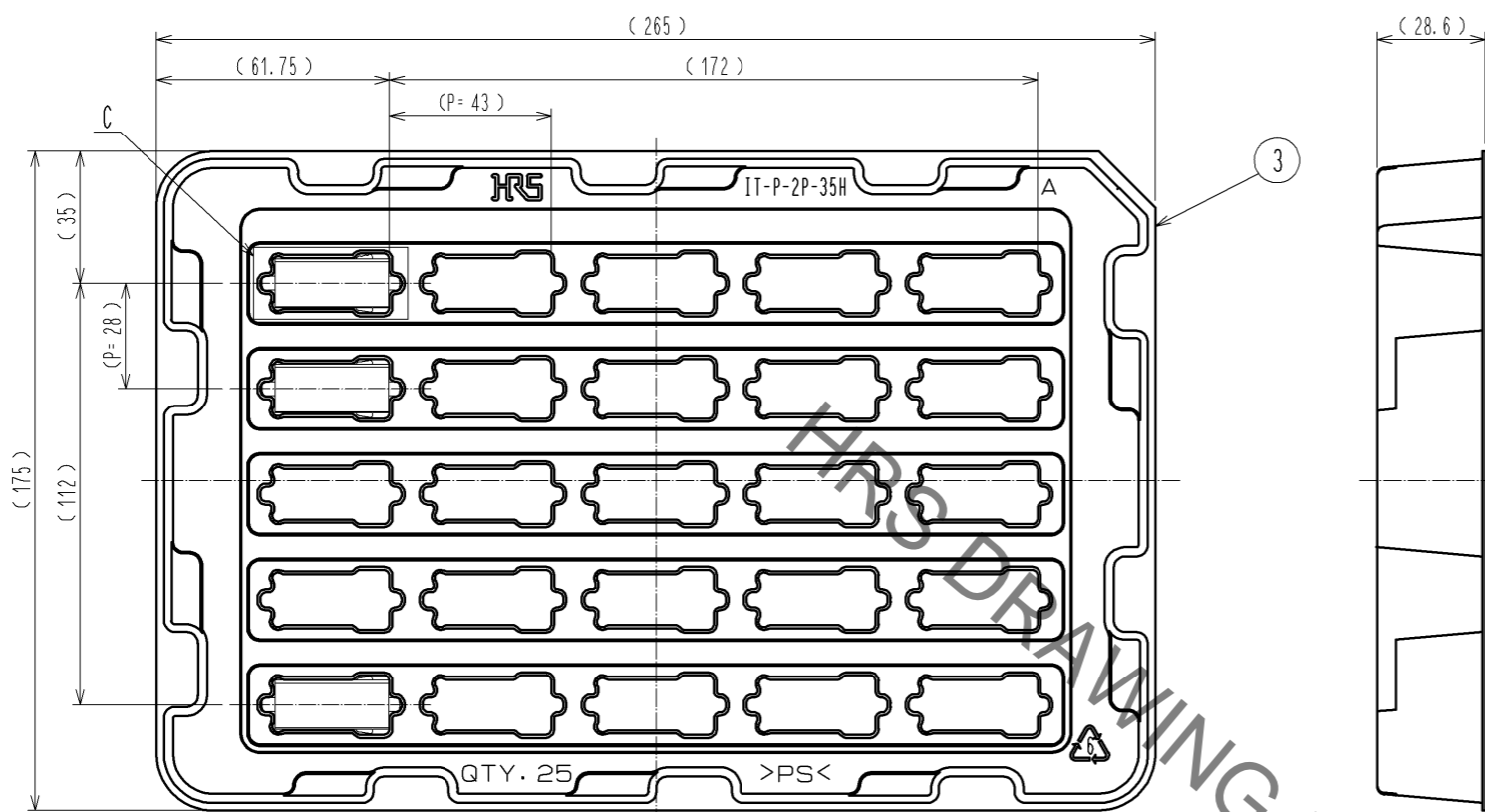


- Note:
- 1 The lot number is marked in this area.
 - 2 Stack height(Nominal)is shown.
 - 3 The dimensions in parentheses are for reference.
 - 4 Engageable receptacle is defined for each side of this product.
 - 5 Since this product is point symmetry, direction of mating does not have a rule.
 - 6 Manufacturing process could leave scratch and/or punch marks, but they have no effect on the product performance.
 - 7 Since silver plating is used for this product, if it is left in the atmosphere for a long time, plating may become drab.
 - 8 This product is RoHS compliant.
 - 9 This product is packaged in tray. (Max 25pcs/Tray)
 - △ 10 This part can accommodate the PCB board to board stacking height range of 35 +1/-0.5mm (34.5mm to 36mm).

2	Copper △	Over Plating : Silver 5.1μm	4	Polystyrene	(Tray B)		
1	PBT	Black UL94V-0	3	Polystyrene	(Tray A)		
NO.	MATERIAL	FINISH . REMARKS	NO.	MATERIAL	FINISH . REMARKS		
UNITS mm	⊕	SCALE 2 : 1	COUNT 4	DESCRIPTION OF REVISIONS DIS-F-006732	DESIGNED TF. SUGAWARA	CHECKED MK. NAGATA	DATE 13.04.01
APPROVED : MK. EZAKI		12.11.14		DRAWING NO. EDC3-339735-01			
CHECKED : MK. EZAKI		12.11.14		PART NO. IT-P-2P-35H(11)			
DESIGNED : MK. NAGATA		12.11.14		CODE NO. CL636-0602-2-11			
DRAWN : MK. NAGATA		12.11.14		△ 10 1/2			

Jun.1.2021 Copyright 2021 HIROSE ELECTRIC CO., LTD. All Rights Reserved.
 In case of consideration for using Automotive equipment / device which demand high reliability, kindly contact our sales window correspondents.

Drawing For Packing (1:2)



Note. 11 The connector is set in the tray in the direction shown here. The side with lot number can be either top side bottom side.

HRS	DRAWING NO.	EDC3-339735-01
	PART NO.	IT-P-2P-35H(11)
	CODE NO.	CL636-0602-2-11
		2/2