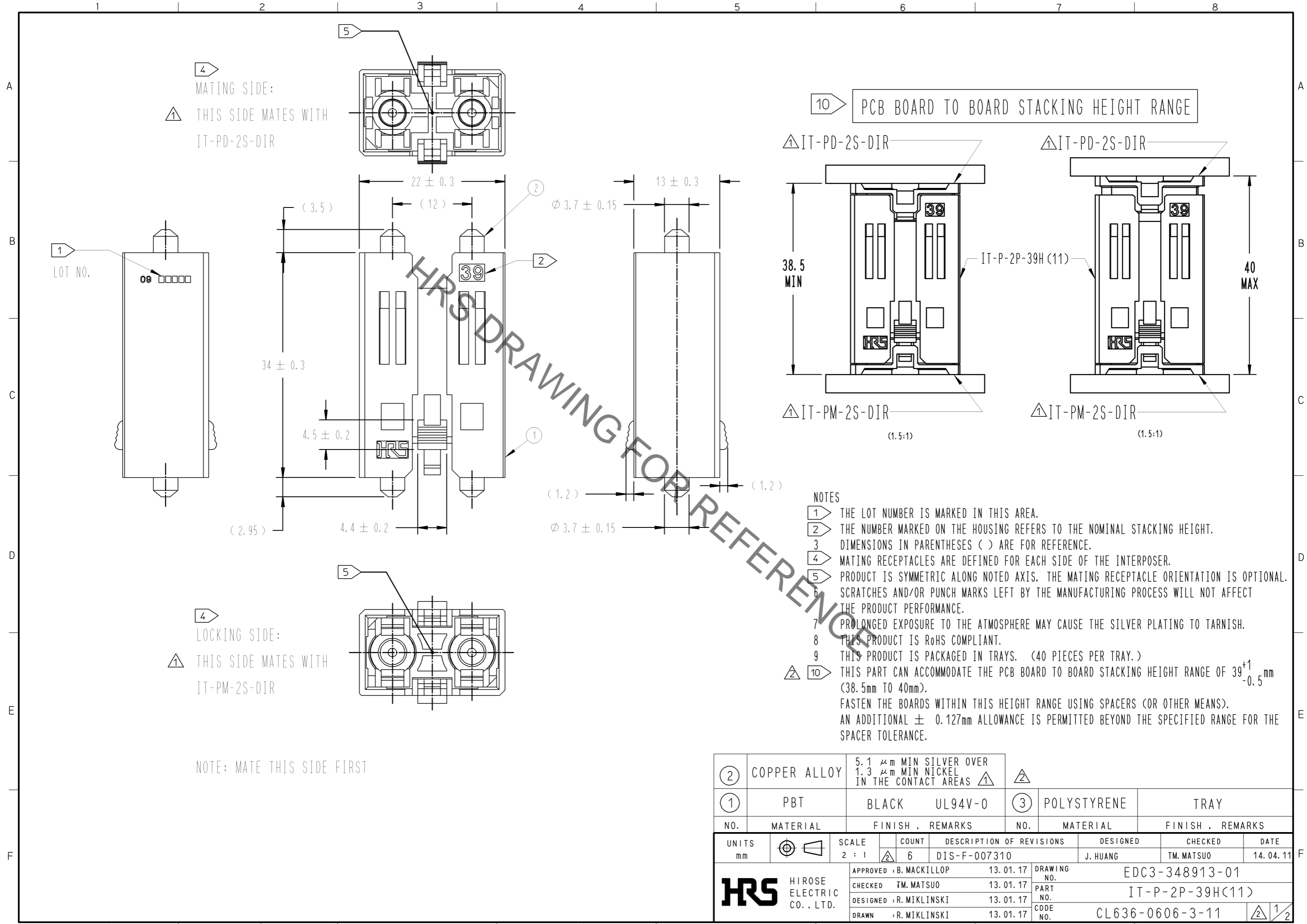


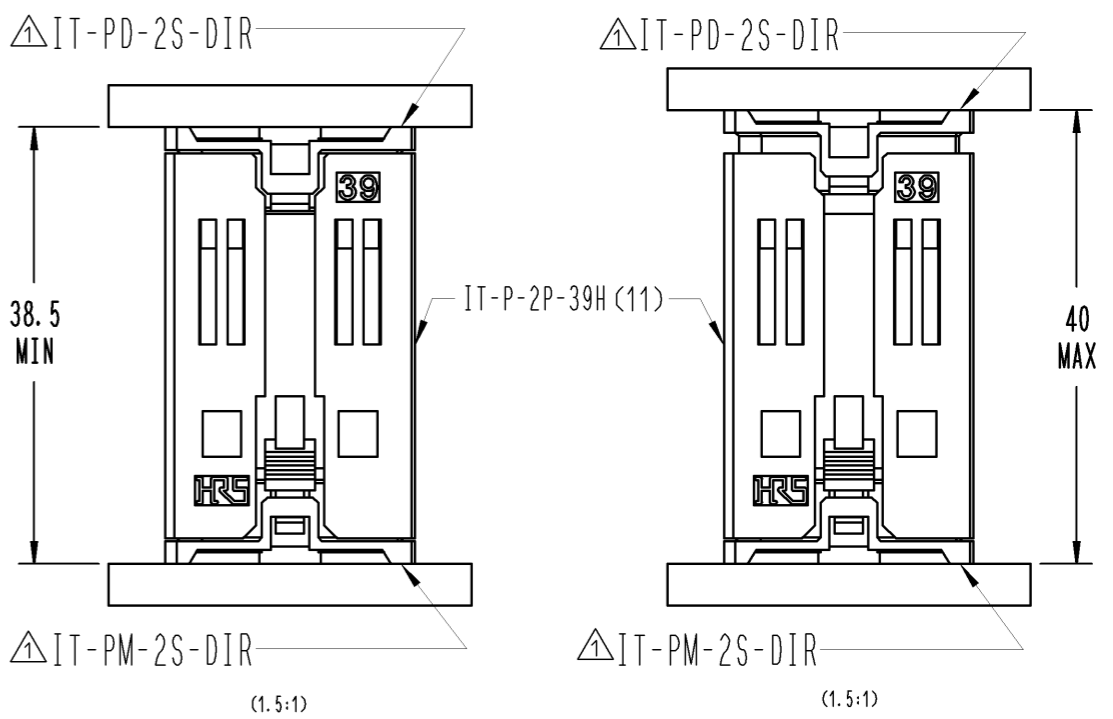
Jun.1.2021 Copyright 2021 HIROSE ELECTRIC CO., LTD. All Rights Reserved.
In case of consideration for using Automotive equipment / device which demand high reliability, kindly contact our sales window correspondents.



4 MATING SIDE:
THIS SIDE MATES WITH IT-PD-2S-DIR

4 LOCKING SIDE:
THIS SIDE MATES WITH IT-PM-2S-DIR

10 PCB BOARD TO BOARD STACKING HEIGHT RANGE



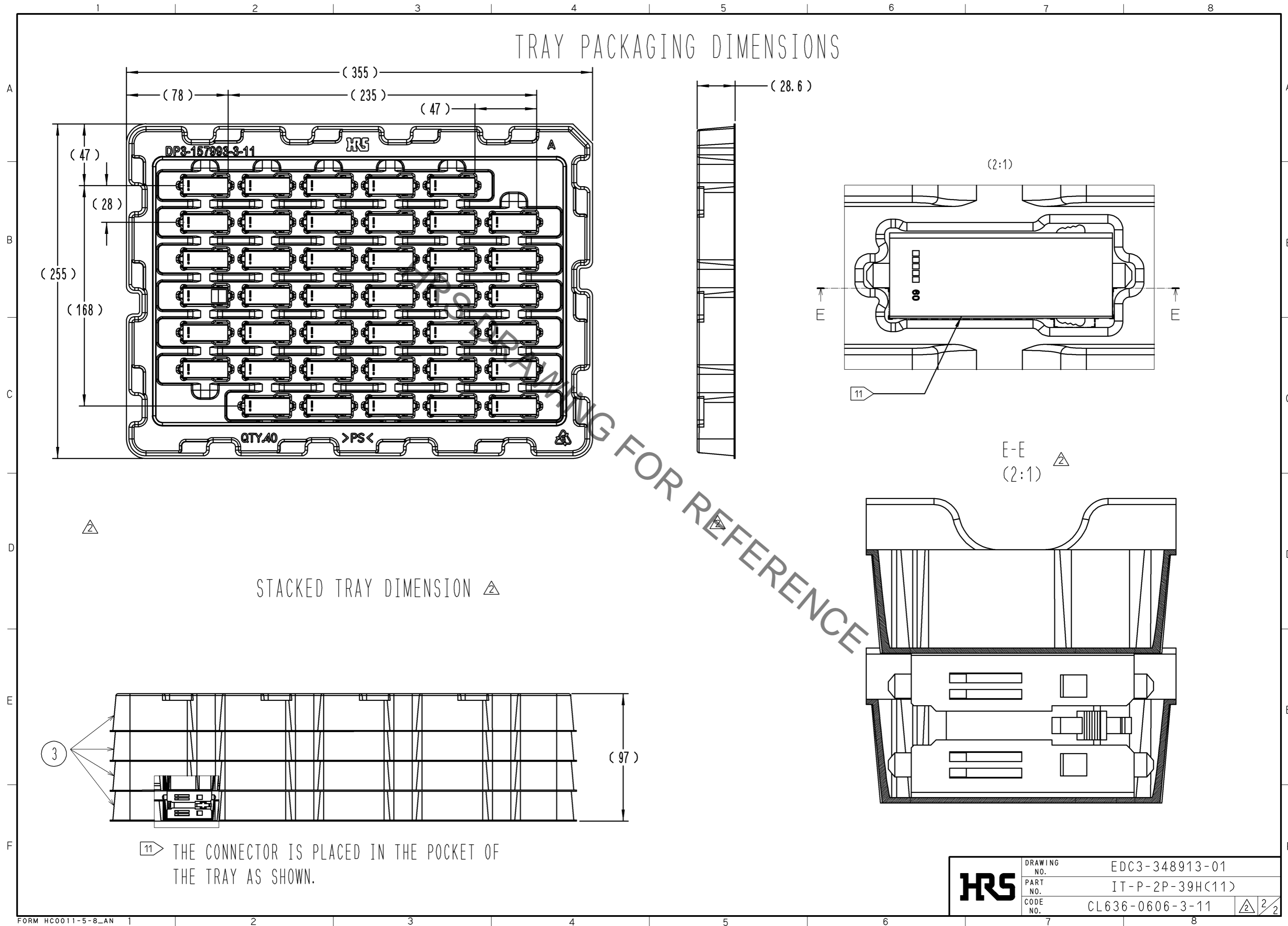
- NOTES
- 1 THE LOT NUMBER IS MARKED IN THIS AREA.
 - 2 THE NUMBER MARKED ON THE HOUSING REFERS TO THE NOMINAL STACKING HEIGHT.
 - 3 DIMENSIONS IN PARENTHESES () ARE FOR REFERENCE.
 - 4 MATING RECEPTACLES ARE DEFINED FOR EACH SIDE OF THE INTERPOSER.
 - 5 PRODUCT IS SYMMETRIC ALONG NOTED AXIS. THE MATING RECEPTACLE ORIENTATION IS OPTIONAL.
 - 6 SCRATCHES AND/OR PUNCH MARKS LEFT BY THE MANUFACTURING PROCESS WILL NOT AFFECT THE PRODUCT PERFORMANCE.
 - 7 PROLONGED EXPOSURE TO THE ATMOSPHERE MAY CAUSE THE SILVER PLATING TO TARNISH.
 - 8 THIS PRODUCT IS RoHS COMPLIANT.
 - 9 THIS PRODUCT IS PACKAGED IN TRAYS. (40 PIECES PER TRAY.)
 - 10 THIS PART CAN ACCOMMODATE THE PCB BOARD TO BOARD STACKING HEIGHT RANGE OF $39^{+1}_{-0.5}$ mm (38.5mm TO 40mm). FASTEN THE BOARDS WITHIN THIS HEIGHT RANGE USING SPACERS (OR OTHER MEANS). AN ADDITIONAL ± 0.127 mm ALLOWANCE IS PERMITTED BEYOND THE SPECIFIED RANGE FOR THE SPACER TOLERANCE.

NOTE: MATE THIS SIDE FIRST

②	COPPER ALLOY	5.1 μ m MIN SILVER OVER 1.3 μ m MIN NICKEL IN THE CONTACT AREAS	③	POLYSTYRENE	TRAY		
①	PBT	BLACK UL94V-0	③	POLYSTYRENE	TRAY		
NO.	MATERIAL	FINISH . REMARKS	NO.	MATERIAL	FINISH . REMARKS		
UNITS mm		SCALE 2 : 1	COUNT 6	DESCRIPTION OF REVISIONS DIS-F-007310	DESIGNED J. HUANG	CHECKED TM. MATSUO	DATE 14. 04. 11
		HIROSE ELECTRIC CO., LTD.	APPROVED : B. MACKILLOP	13. 01. 17	DRAWING NO. EDC3-348913-01		
			CHECKED : TM. MATSUO	13. 01. 17	PART NO. IT-P-2P-39H(11)		
			DESIGNED : R. MIKLINSKI	13. 01. 17	CODE NO. CL636-0606-3-11		
			DRAWN : R. MIKLINSKI	13. 01. 17	② 1/2		

Jun.1.2021 Copyright 2021 HIROSE ELECTRIC CO., LTD. All Rights Reserved.
 In case of consideration for using Automotive equipment / device which demand high reliability, kindly contact our sales window correspondents.

TRAY PACKAGING DIMENSIONS



STACKED TRAY DIMENSION \triangle

HRS	DRAWING NO.	EDC3-348913-01	\triangle 2/2
	PART NO.	IT-P-2P-39H(11)	
	CODE NO.	CL636-0606-3-11	