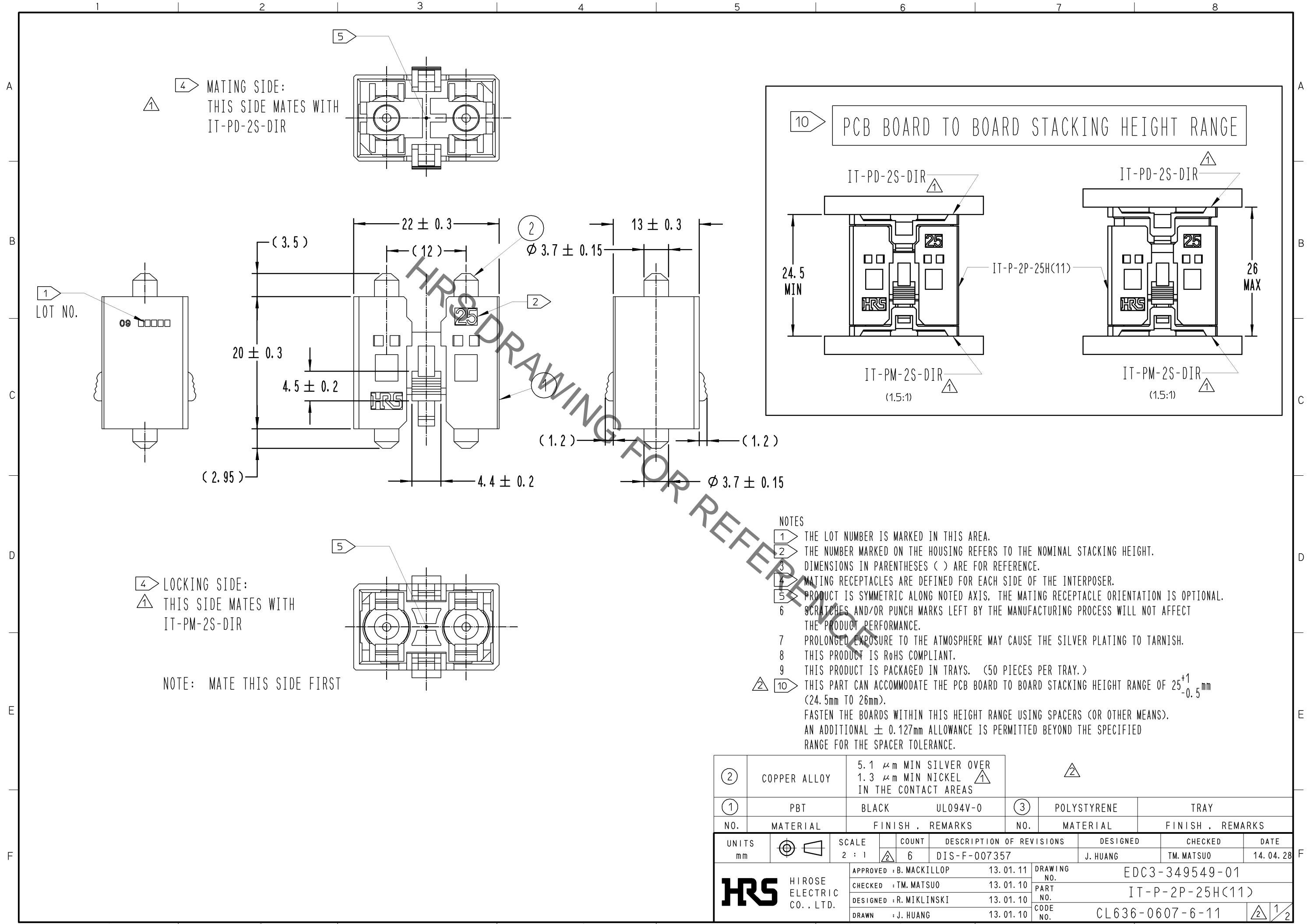


Jul.1.2021 Copyright 2021 HIROSE ELECTRIC CO., LTD. All Rights Reserved.  
In case of consideration for using Automotive equipment / device which demand high reliability, kindly contact our sales window correspondents.

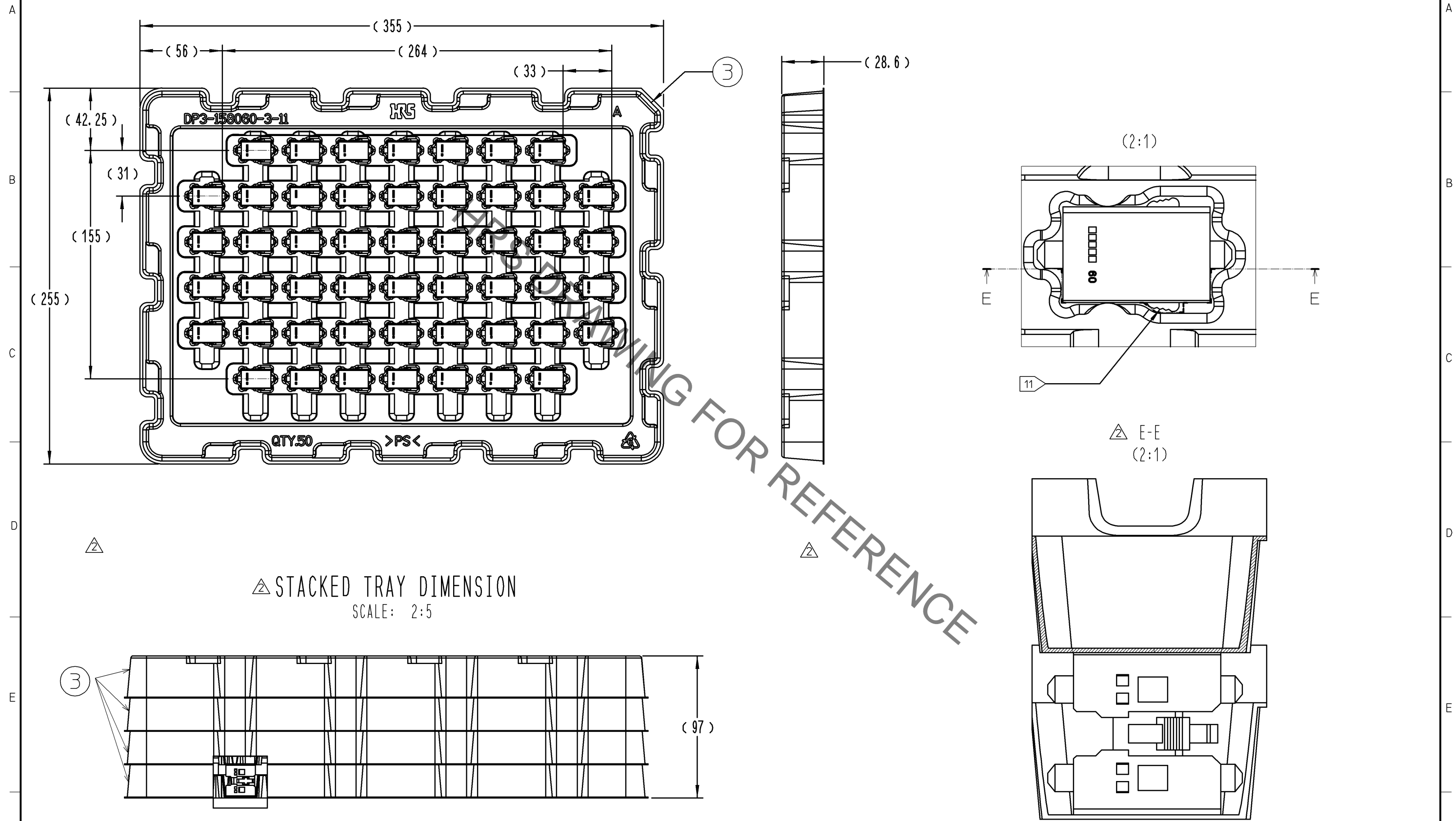


- NOTES
- 1** THE LOT NUMBER IS MARKED IN THIS AREA.
  - 2** THE NUMBER MARKED ON THE HOUSING REFERS TO THE NOMINAL STACKING HEIGHT.
  - 3** DIMENSIONS IN PARENTHESES ( ) ARE FOR REFERENCE.
  - 4** MATING RECEPTACLES ARE DEFINED FOR EACH SIDE OF THE INTERPOSER.
  - 5** PRODUCT IS SYMMETRIC ALONG NOTED AXIS, THE MATING RECEPTACLE ORIENTATION IS OPTIONAL.
  - 6** SCRATCHES AND/OR PUNCH MARKS LEFT BY THE MANUFACTURING PROCESS WILL NOT AFFECT THE PRODUCT PERFORMANCE.
  - 7** PROLONGED EXPOSURE TO THE ATMOSPHERE MAY CAUSE THE SILVER PLATING TO TARNISH.
  - 8** THIS PRODUCT IS RoHS COMPLIANT.
  - 9** THIS PRODUCT IS PACKAGED IN TRAYS. (50 PIECES PER TRAY.)
  - 10** THIS PART CAN ACCOMMODATE THE PCB BOARD TO BOARD STACKING HEIGHT RANGE OF  $25^{+1}_{-0.5}$ mm (24.5mm TO 26mm). FASTEN THE BOARDS WITHIN THIS HEIGHT RANGE USING SPACERS (OR OTHER MEANS). AN ADDITIONAL  $\pm 0.127$ mm ALLOWANCE IS PERMITTED BEYOND THE SPECIFIED RANGE FOR THE SPACER TOLERANCE.

<b>2</b>	COPPER ALLOY	5.1 $\mu$ m MIN SILVER OVER 1.3 $\mu$ m MIN NICKEL IN THE CONTACT AREAS						
<b>1</b>	PBT	BLACK	UL094V-0	<b>3</b>	POLYSTYRENE TRAY			
NO.	MATERIAL	FINISH	REMARKS	NO.	MATERIAL	FINISH	REMARKS	
UNITS mm		SCALE 2 : 1	COUNT 6	DESCRIPTION OF REVISIONS DIS-F-007357		DESIGNED J. HUANG	CHECKED TM. MATSUO	DATE 14. 04. 28
<b>HRS</b> HIROSE ELECTRIC CO., LTD.		APPROVED : B. MACKILLOP	13. 01. 11	DRAWING NO. EDC3-349549-01				
		CHECKED : TM. MATSUO	13. 01. 10	PART NO. IT-P-2P-25H(11)				
		DESIGNED : R. MIKLINSKI	13. 01. 10	CODE NO. CL636-0607-6-11				
		DRAWN : J. HUANG	13. 01. 10					

Jul.1.2021 Copyright 2021 HIROSE ELECTRIC CO., LTD. All Rights Reserved.  
In case of consideration for using Automotive equipment / device which demand high reliability, kindly contact our sales window correspondents.

# TRAY PACKAGING DIMENSIONS



△ STACKED TRAY DIMENSION  
SCALE: 2:5

11 THE CONNECTOR IS PLACED IN THE POCKET OF THE TRAY AS SHOWN.

<b>HRS</b>	DRAWING NO.	EDC3-349549-01
	PART NO.	IT-P-2P-25H(11)
	CODE NO.	CL636-0607-6-11
		2/2