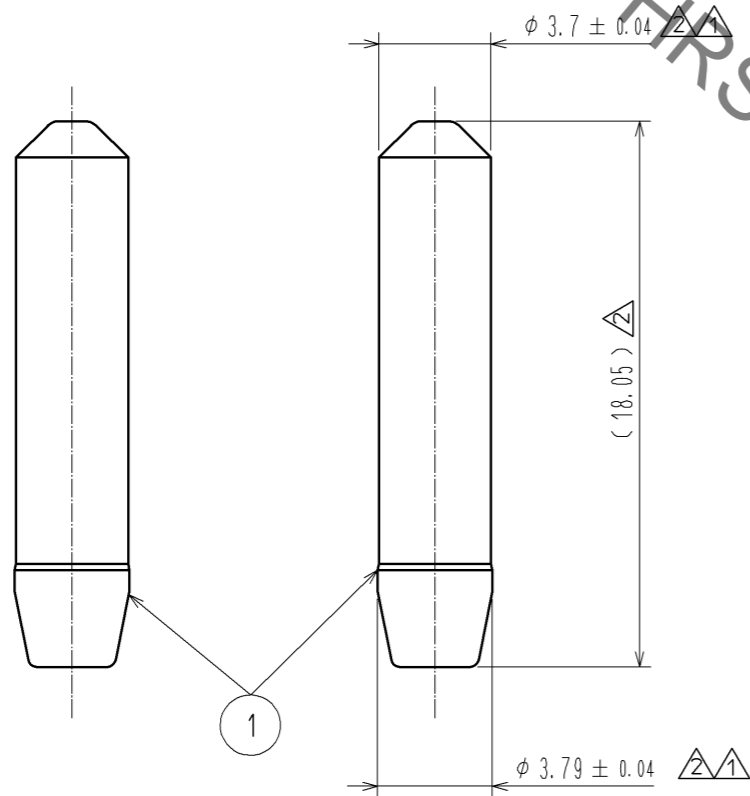
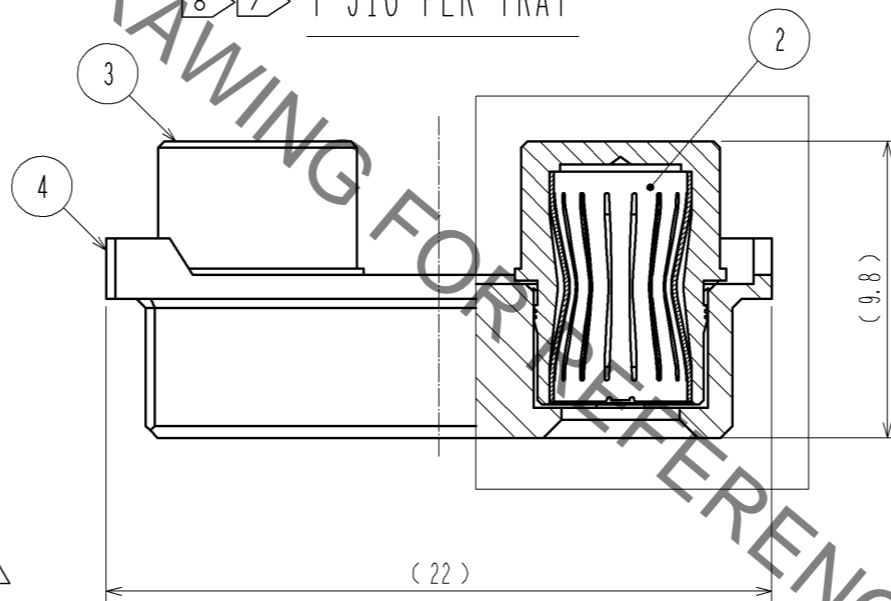


Jun.1.2021 Copyright 2021 HIROSE ELECTRIC CO., LTD. All Rights Reserved.
In case of consideration for using Automotive equipment / device which demand high reliability, kindly contact our sales window correspondents.

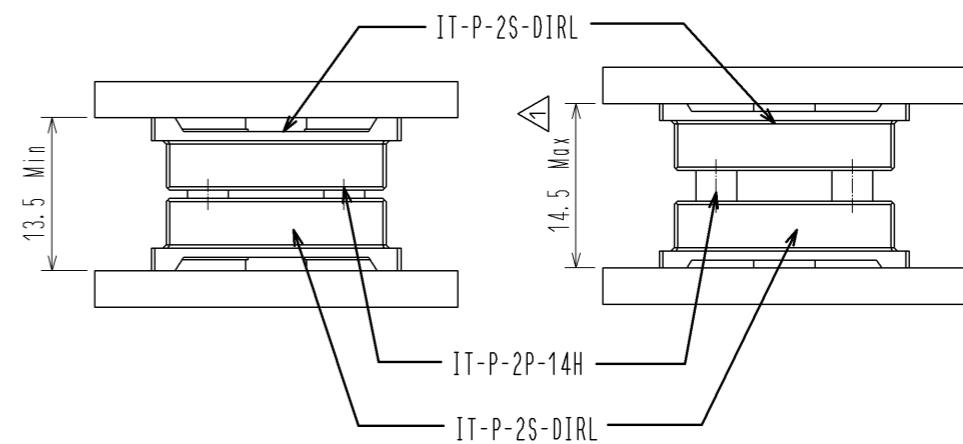
6 50 PAIRS PER TRAY
(100 CONTACTS TOTAL)



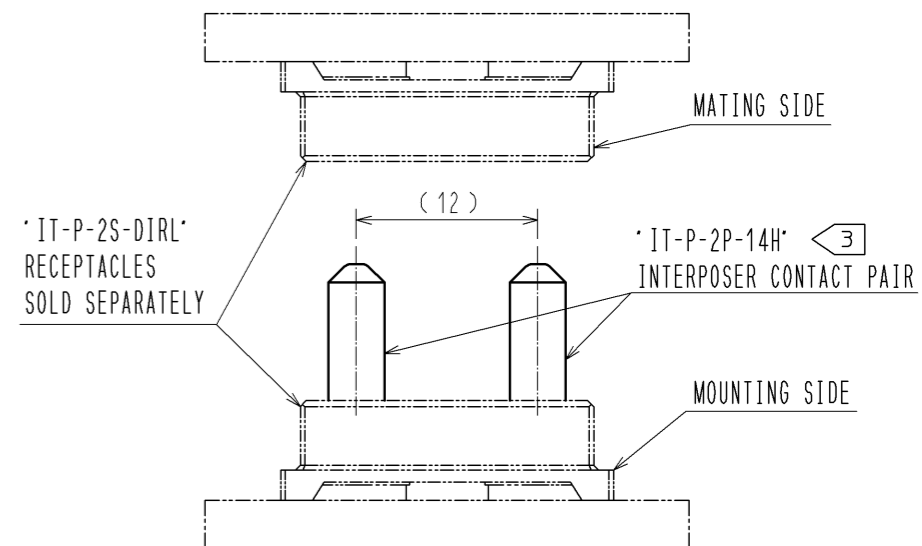
8 7 1 JIG PER TRAY



5 PCB BOARD TO BOARD STACKING HEIGHT RANGE (SCALE FREE)



(2:1)



NOTES:

- 1 THE DIMENSIONS IN PARENTHESES () ARE FOR REFERENCE.
- 2 PROLONGED EXPOSURE TO THE ATMOSPHERE MAY CAUSE THE SILVER PLATING TO TARNISH.
- 3 THE CONTACTS ARE SOLD IN PAIRS.
- 4 THIS PRODUCT IS RoHS COMPLIANT.
- 5 THIS PART CAN ACCOMMODATE THE PCB BOARD TO BOARD STACKING HEIGHT RANGE OF $14 \pm 0.5\text{mm}$ (13.5mm TO 14.5mm). FASTEN THE BOARDS WITHIN THIS HEIGHT RANGE USING SPACERS (OR OTHER MEANS). AN ADDITIONAL $\pm 0.127\text{mm}$ ALLOWANCE IS PERMITTED BEYOND THE SPECIFIED RANGE FOR THE SPACER TOLERANCE.
- 6 THIS PRODUCT IS PACKAGED IN TRAYS. (50 PAIRS PER TRAY)

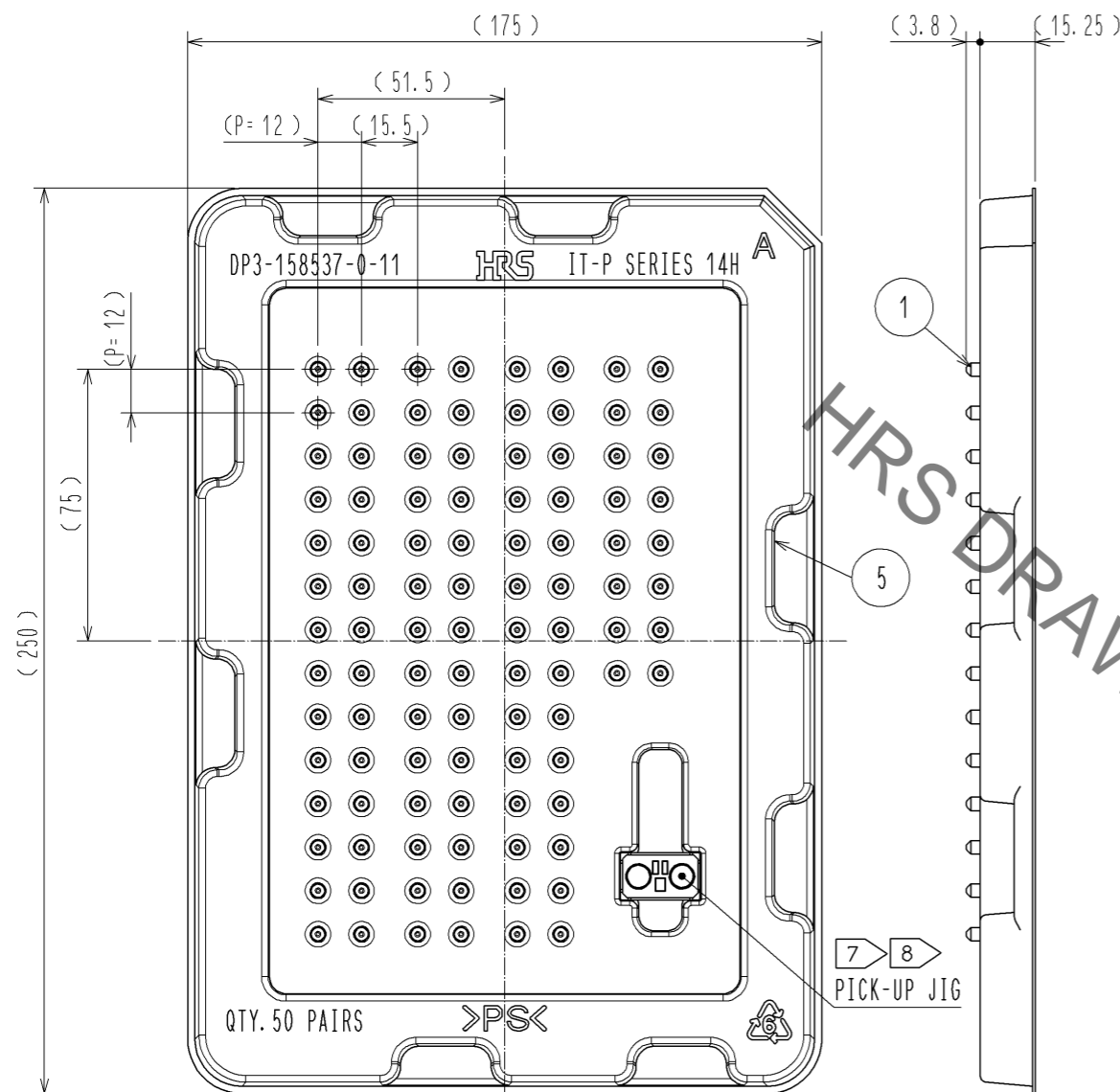
NO.	MATERIAL	FINISH . REMARKS	NO.	MATERIAL	FINISH . REMARKS
4	LCP	RED UL94V-0	6	PS	TRAY
3	BRASS	OVERPLATING: SILVER 5.1μm MIN UNDERPLATING: NICKEL 1.3μm MIN	5		
2	COPPER ALLOY	CONTACT AREA: GOLD 0.76μm MIN UNDERPLATING: NICKEL 1.3μm MIN			
1	COPPER ALLOY	OVERPLATING: SILVER 5.1μm MIN UNDERPLATING: NICKEL 1.3μm MIN IN THE CONTACT AREA			

UNITS	SCALE	COUNT	DESCRIPTION OF REVISIONS	DESIGNED	CHECKED	DATE
mm	4 : 1	16	DIS-F-007412	NY. SIMURA	MK. EZAKI	14. 07. 03

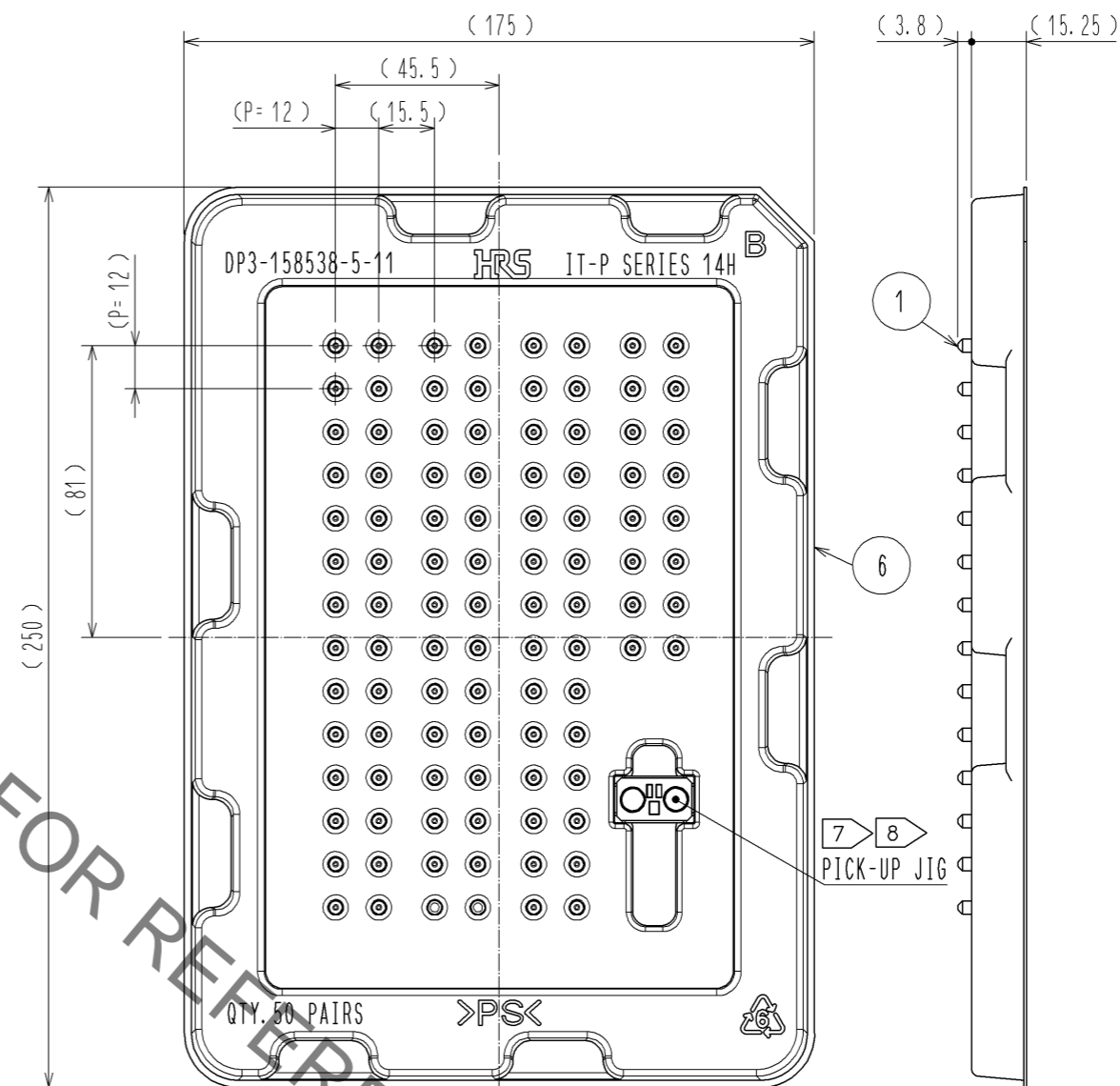
APPROVED	DATE	DRAWING NO.
B. MACKILLOP	14. 04. 15	EDC3-354230-00
CHECED	DATE	PART NO.
TM. MATSUO	14. 04. 14	IT-P-2P-14H
DESIGNED	DATE	CODE NO.
R. MIKLINSKI	14. 03. 13	CL636-0609-1-00
DRAWN	DATE	
J. HUANG	13. 12. 16	

Jun.1.2021 Copyright 2021 HIROSE ELECTRIC CO., LTD. All Rights Reserved.
 In case of consideration for using Automotive equipment / device which demand high reliability, kindly contact our sales window correspondents.

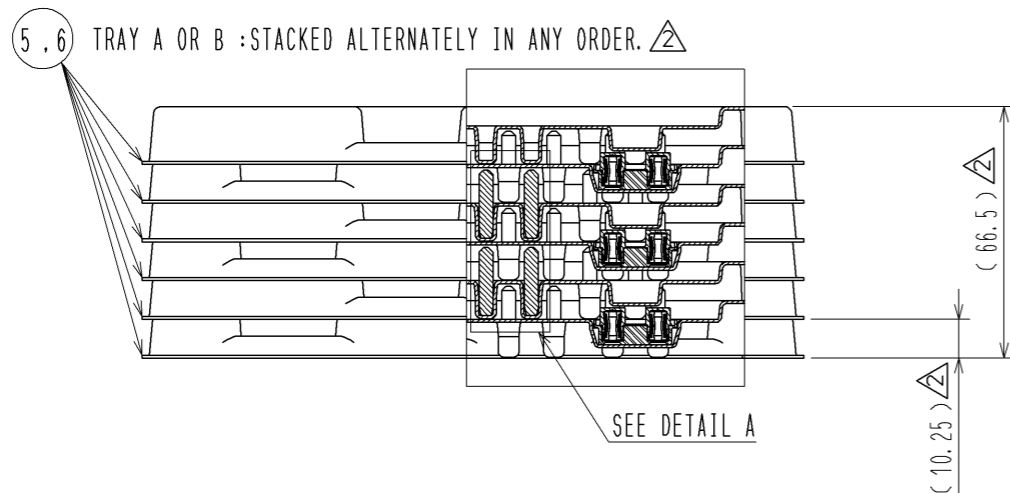
TRAY PACKING DIMENSIONS (TRAY A)
(1:2)



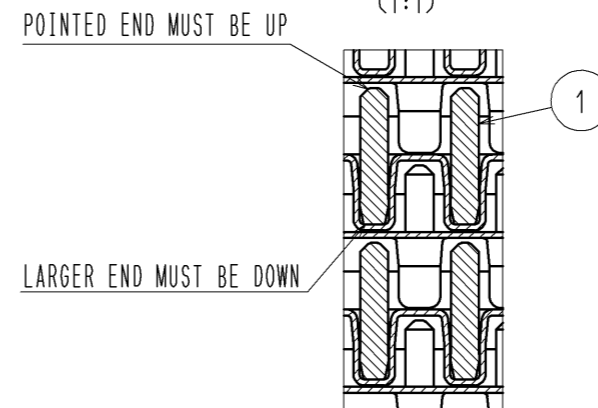
TRAY PACKING DIMENSIONS (TRAY B)
(1:2)



STACKED TRAY DIMENSION
(1:2)



DETAIL A
(1:1)

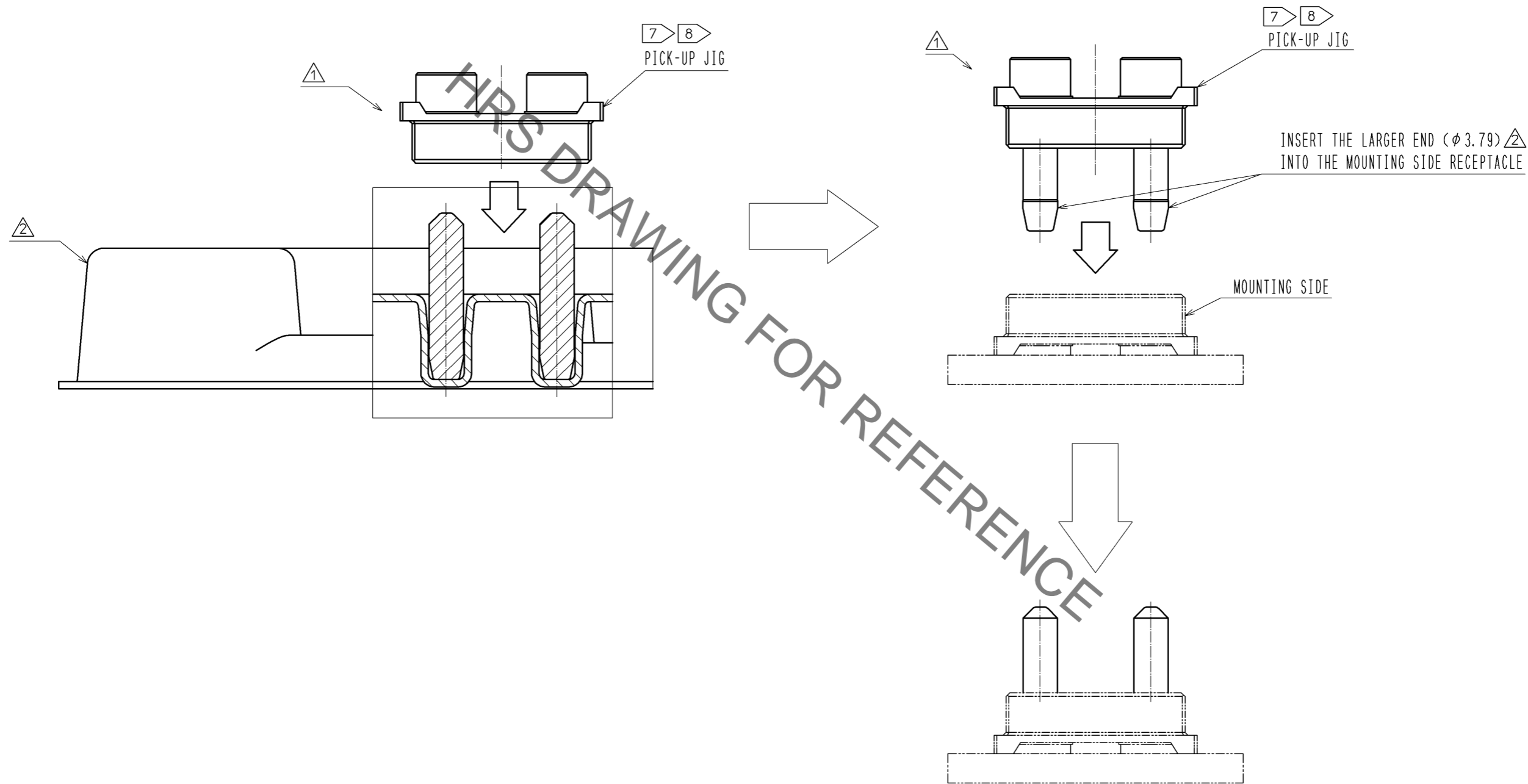


HRS	DRAWING NO.	EDC3-354230-00
	PART NO.	IT-P-2P-14H
	CODE NO.	CL636-0609-1-00
		2/3

Jun.1.2021 Copyright 2021 HIROSE ELECTRIC CO., LTD. All Rights Reserved.
In case of consideration for using Automotive equipment / device which demand high reliability, kindly contact our sales window correspondents.

INTERPOSER CONTACT INSTALLATION PROCEDURE

(2:1)



NOTES:

- 7 TO PREVENT SILVER TARNISH, DO NOT TOUCH THE CONTACTS WITH YOUR BARE HANDS. USE THE MATING RECEPTACLE THAT HAS BEEN PROVIDED AS A PICK-UP JIG.
- 8 EACH JIG IS INTENDED TO BE USED TO PICK UP THE CONTACTS IN ONE TRAY AND THEN BE DISCARDED.

HRS	DRAWING NO.	EDC3-354230-00
	PART NO.	IT-P-2P-14H
	CODE NO.	CL636-0609-1-00

3/3