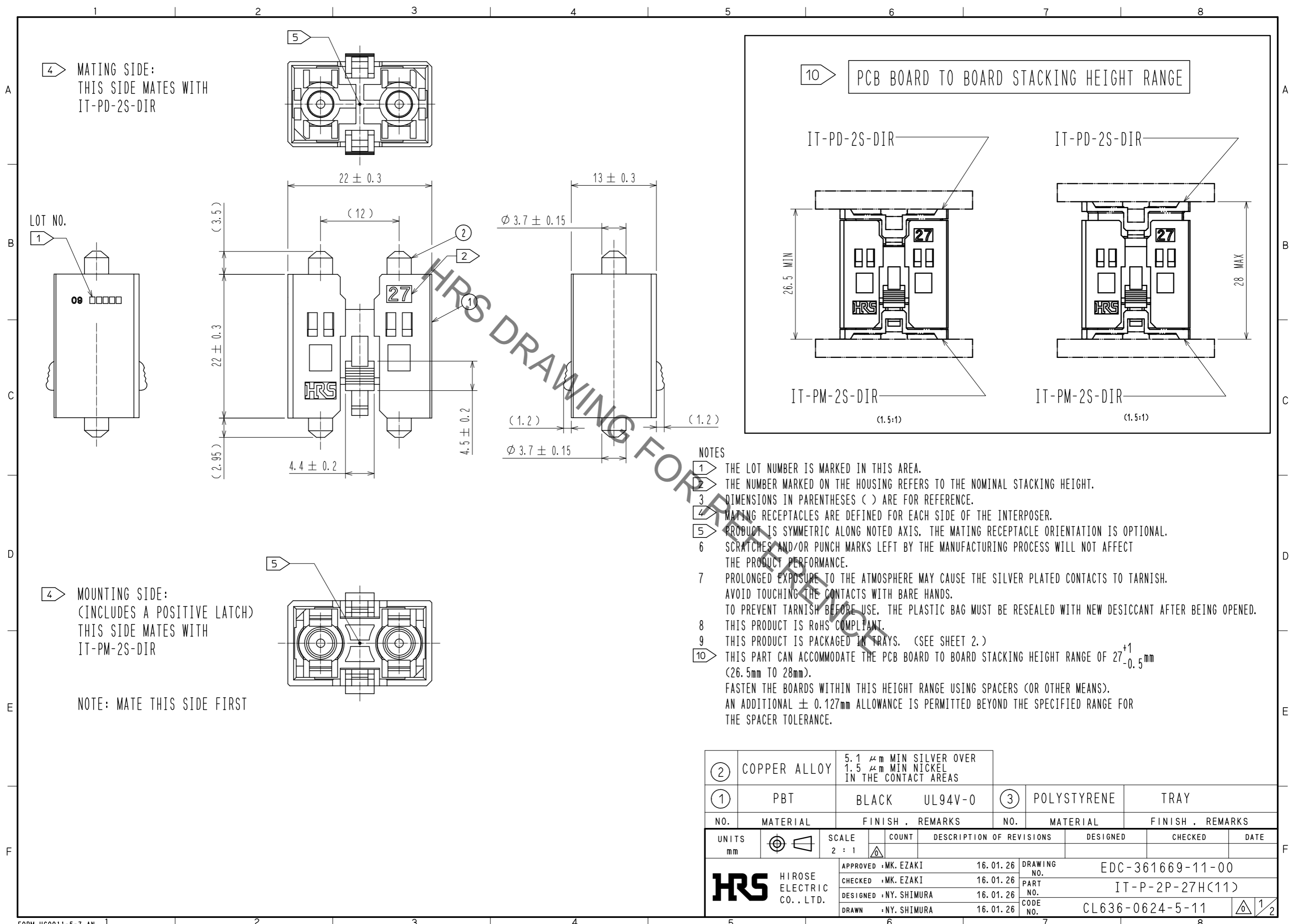


In case of consideration for using Automotive equipment / device which demand high reliability, kindly contact our sales window correspondents.

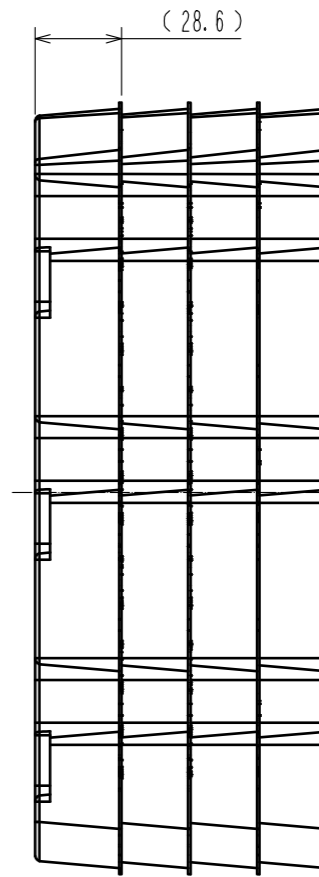
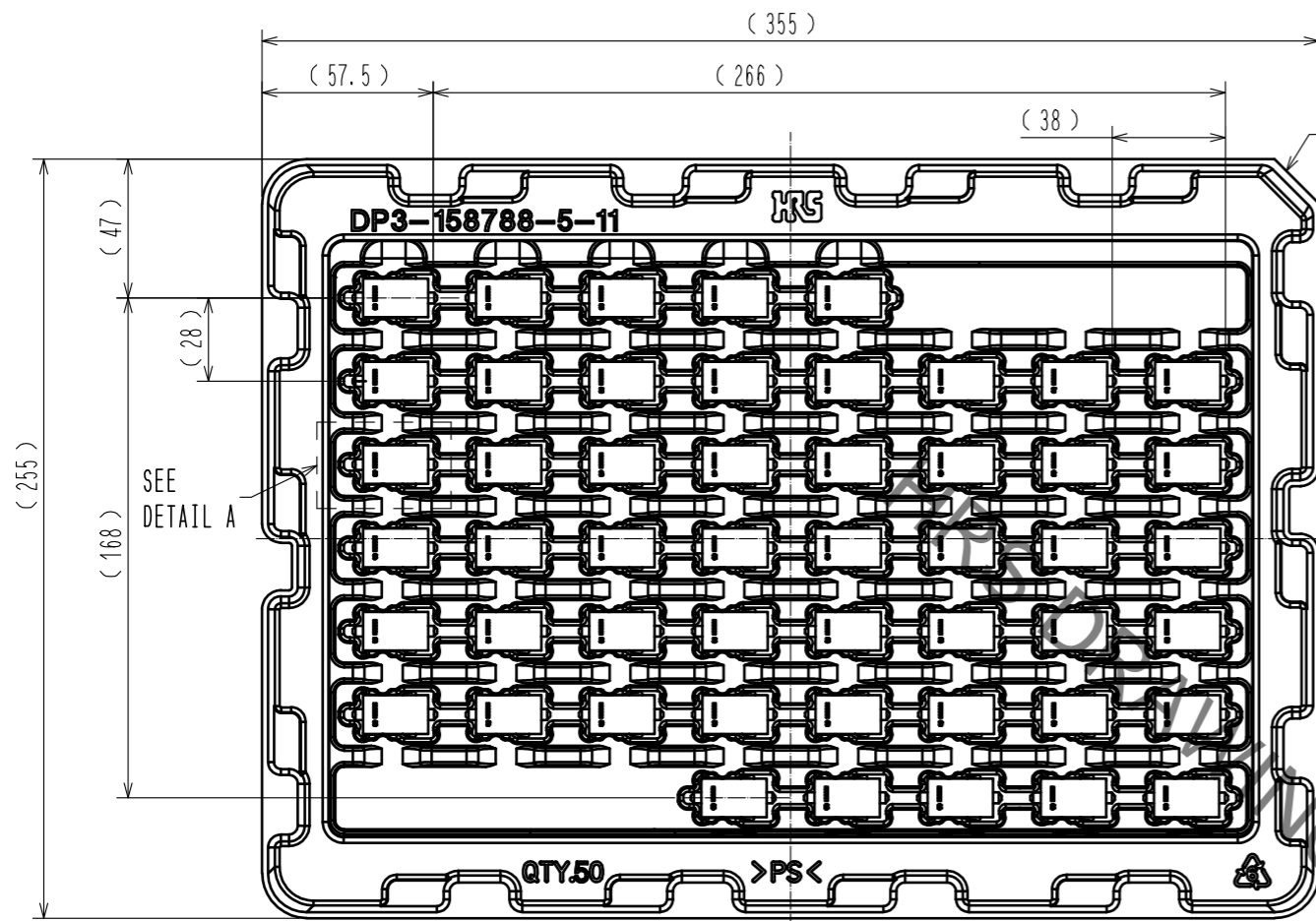


- NOTES
- 1** THE LOT NUMBER IS MARKED IN THIS AREA.
  - 2** THE NUMBER MARKED ON THE HOUSING REFERS TO THE NOMINAL STACKING HEIGHT.
  - 3** DIMENSIONS IN PARENTHESES ( ) ARE FOR REFERENCE.
  - 4** MATING RECEPTACLES ARE DEFINED FOR EACH SIDE OF THE INTERPOSER.
  - 5** PRODUCT IS SYMMETRIC ALONG NOTED AXIS. THE MATING RECEPTACLE ORIENTATION IS OPTIONAL.
  - 6** SCRATCHES AND/OR PUNCH MARKS LEFT BY THE MANUFACTURING PROCESS WILL NOT AFFECT THE PRODUCT PERFORMANCE.
  - 7** PROLONGED EXPOSURE TO THE ATMOSPHERE MAY CAUSE THE SILVER PLATED CONTACTS TO TARNISH. AVOID TOUCHING THE CONTACTS WITH BARE HANDS. TO PREVENT TARNISH BEFORE USE, THE PLASTIC BAG MUST BE RESEALED WITH NEW DESICCANT AFTER BEING OPENED.
  - 8** THIS PRODUCT IS RoHS COMPLIANT.
  - 9** THIS PRODUCT IS PACKAGED IN TRAYS. (SEE SHEET 2.)
  - 10** THIS PART CAN ACCOMMODATE THE PCB BOARD TO BOARD STACKING HEIGHT RANGE OF 27<sup>+1</sup><sub>-0.5</sub>mm (26.5mm TO 28mm). FASTEN THE BOARDS WITHIN THIS HEIGHT RANGE USING SPACERS (OR OTHER MEANS). AN ADDITIONAL ± 0.127mm ALLOWANCE IS PERMITTED BEYOND THE SPECIFIED RANGE FOR THE SPACER TOLERANCE.

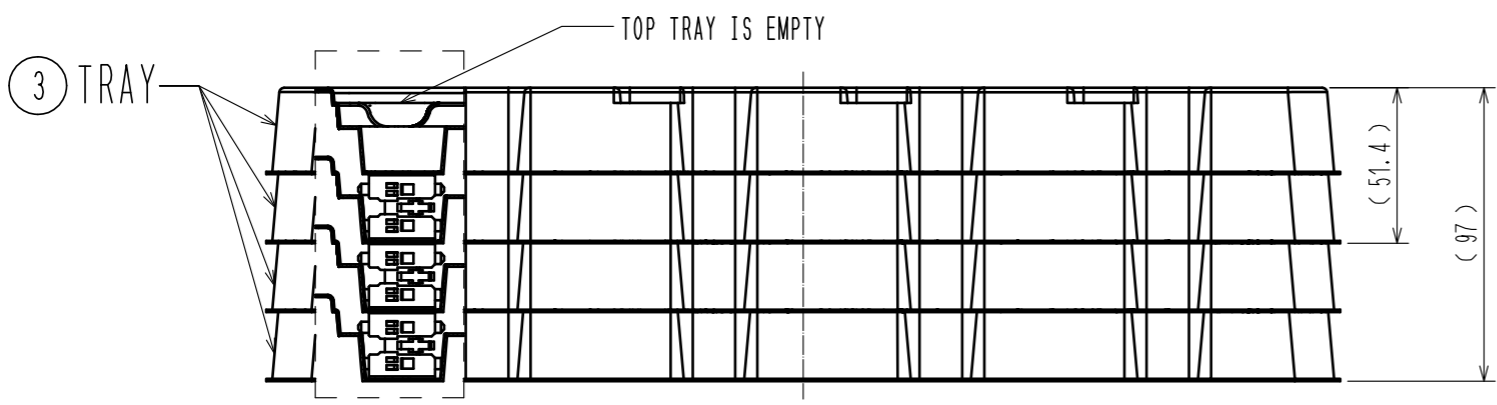
<b>2</b>	COPPER ALLOY	5.1 μm MIN SILVER OVER 1.5 μm MIN NICKEL IN THE CONTACT AREAS	<b>3</b>	POLYSTYRENE	TRAY			
<b>1</b>	PBT	BLACK UL94V-0						
NO.	MATERIAL	FINISH . REMARKS	NO.	MATERIAL	FINISH . REMARKS			
UNITS mm			SCALE 2 : 1	COUNT 	DESCRIPTION OF REVISIONS	DESIGNED	CHECKED	DATE
<b>HRS</b> HIROSE ELECTRIC CO., LTD.		APPROVED : MK. EZAKI 16. 01. 26	DRAWING NO. EDC-361669-11-00					
		CHECKED : MK. EZAKI 16. 01. 26	PART NO. IT-P-2P-27H(11)					
		DESIGNED : NY. SHIMURA 16. 01. 26	CODE NO. CL636-0624-5-11					
		DRAWN : NY. SHIMURA 16. 01. 26						

Jul.1.2021 Copyright 2021 HIROSE ELECTRIC CO., LTD. All Rights Reserved.  
In case of consideration for using Automotive equipment / device which demand high reliability, kindly contact our sales window correspondents.

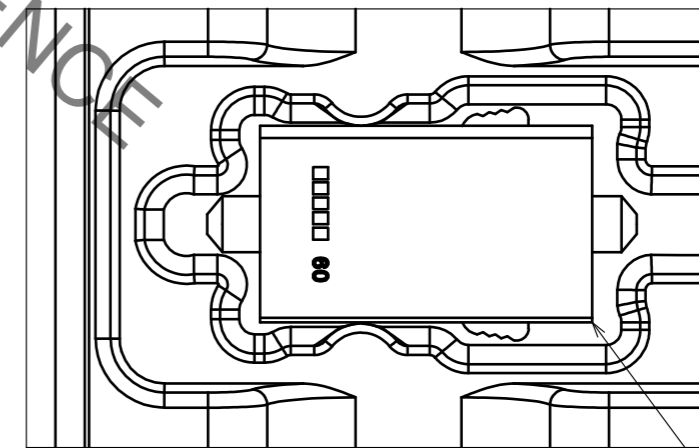
# TRAY PACKAGING DIMENSIONS



(TOP TRAY REMOVED TO SHOW PRODUCT)



DETAIL A  
(2:1)



THE CONNECTOR IS PLACED IN THE POCKET OF THE TRAY AS SHOWN.

SCALE 2:5

<b>HRS</b>	DRAWING NO.	EDC-361669-11-00
	PART NO.	IT-P-2P-27H(11)
	CODE NO.	CL636-0624-5-11
		2/2