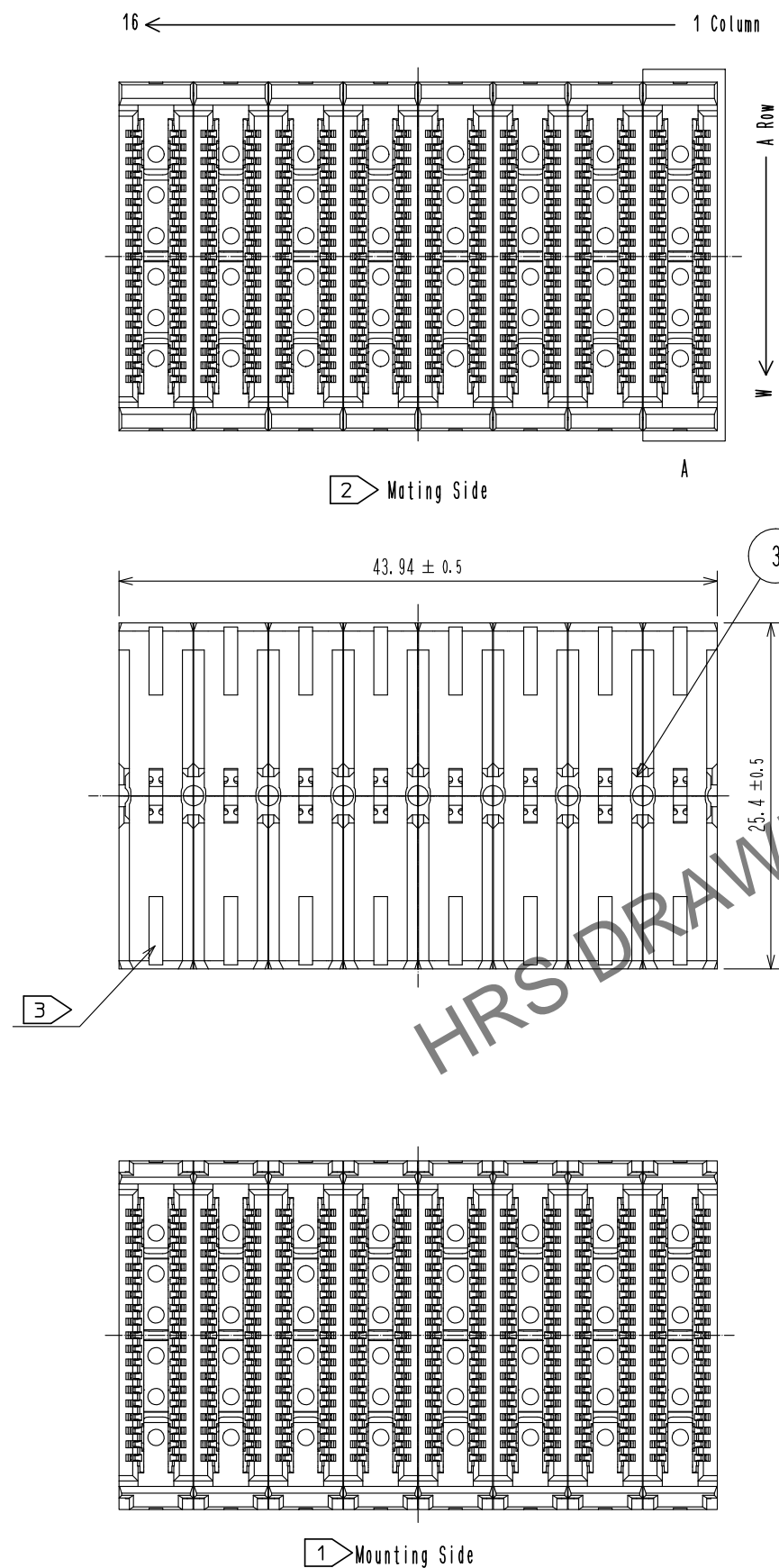


Mar.1.2024 Copyright 2024 HIROSE ELECTRIC CO., LTD. All Rights Reserved.  
In case of consideration for using Automotive equipment / device which demand high reliability, kindly contact our sales window correspondents.

A  
B  
C  
D  
E  
F

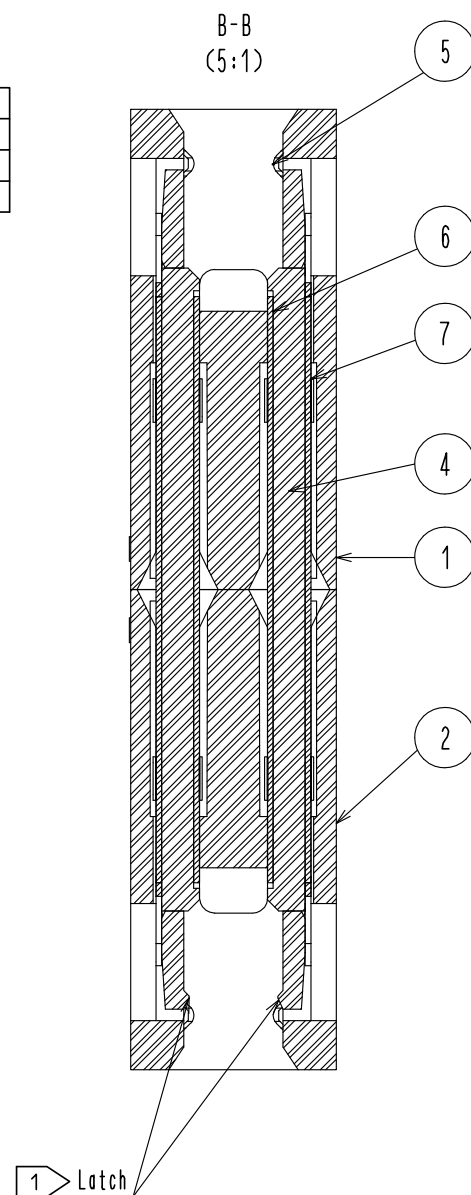
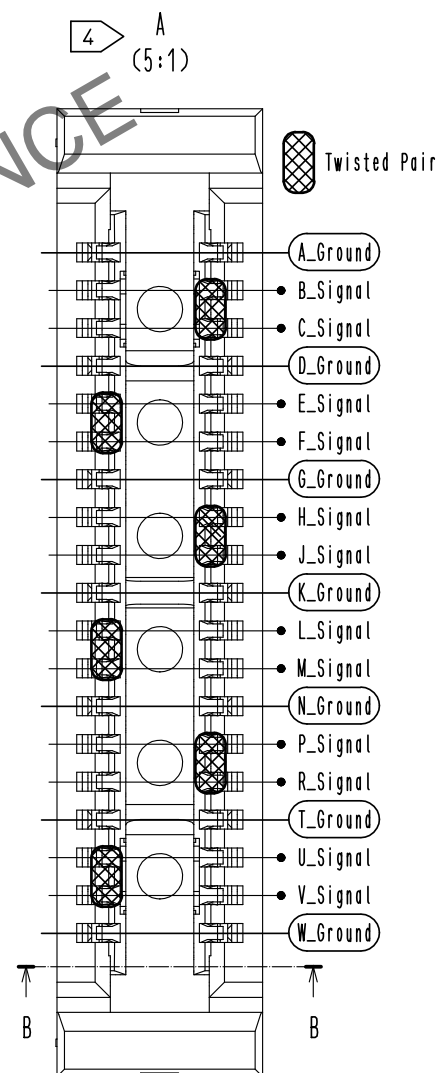
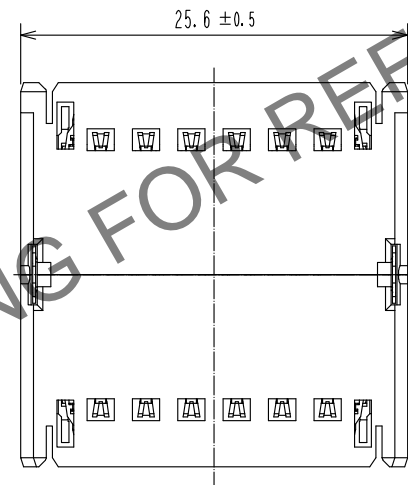


Note.

- 1 Mounting side is mated with Plug-M:IT8M-192P-BGA-\*H(\*\*) and fixed with the latch.
- 2 Mating side is mated with Plug-D:IT8D-192P-BGA-\*H(\*\*).
- 3 Lot No. shall be marked at the indicated position.
- 4 IT8 Series apply GSSG.. pin assign as shown. Twisted pairs are indicated by the hatch marks. Twisted pairs are twisted in the center to reduce FEXT.
- 5 The indicated mother board and daughter card shall be fastened to the additional reinforcements to prevent the stress on IT8\*-192P-BGA-\*H(\*\*) solder joints.
- 6 This product consists of 192 signal contacts and 112 ground contacts.
- 7 The spacer height of this product assembled with mounted IT8M-192P-BGA-\*H(\*\*) and IT8D-192P-BGA-\*H(\*\*) shall be indicated in Table 1.

Table 1 Spacer height

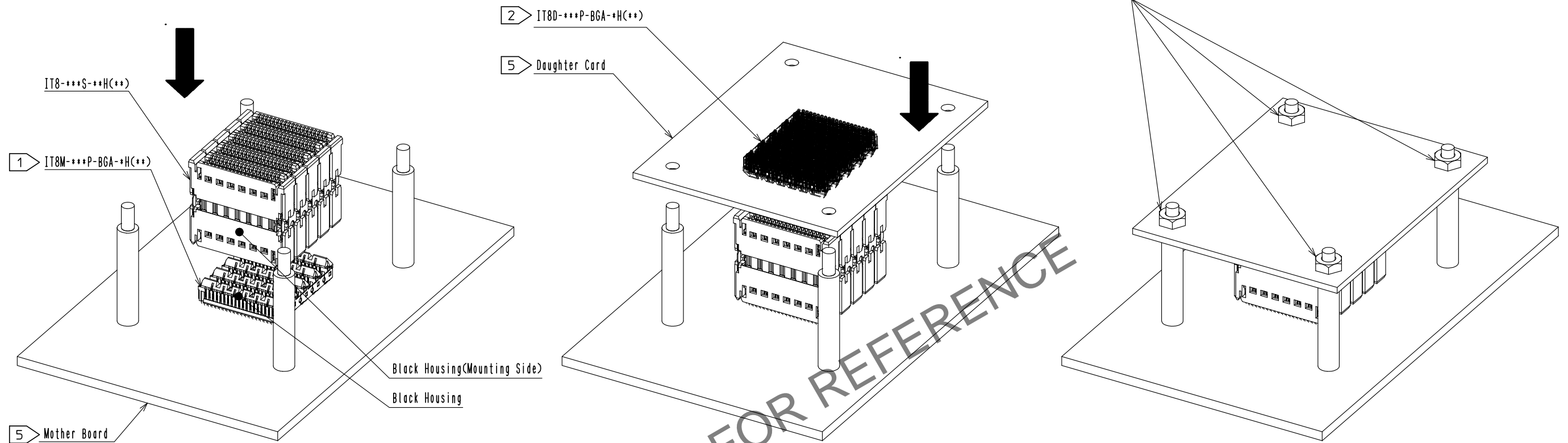
Spacer height (X)	28	29	30
Plug-D (Detachable Side)	IT8D-***P-BGA-0H(**)	IT8D-***P-BGA-0H(**)	IT8D-***P-BGA-1H(**)
Interposer		IT8-***S-28H(**)	
Plug-M (Mounting Side)	IT8M-***P-BGA-0H(**)	IT8M-***P-BGA-1H(**)	IT8M-***P-BGA-1H(**)



4	LCP	BLACK, UL94V-0	7	SUS	
3	SUS		6	SUS	
2	PPS	BLACK, UL94V-0	5	Copper Alloy	Contact area:Nickel 1.27µm min.+Gold 0.76µm min.
1	PPS	GRAY, UL94V-0			Other area:Nickel 1.27µm min.
NO.	MATERIAL	FINISH, REMARKS	NO.	MATERIAL	FINISH, REMARKS
UNITS mm		SCALE 2 : 1	COUNT	DESCRIPTION OF REVISIONS	DESIGNED
		APPROVED : MK. EZAKI	17.03.07	DRAWING NO.	EDC-370993-00-00
		CHECKED : YS. TAKEUCHI	17.03.06	PART NO.	IT8-192S-28H
		DESIGNED : TH. SANO	17.03.06	CODE NO.	CL636-3510-0-00
		DRAWN : TH. SANO	17.03.06		

Mar.1.2024 Copyright 2024 HIROSE ELECTRIC CO., LTD. All Rights Reserved.  
In case of consideration for using Automotive equipment / device which demand high reliability, kindly contact our sales window correspondents.

## IT8 Assembly Process

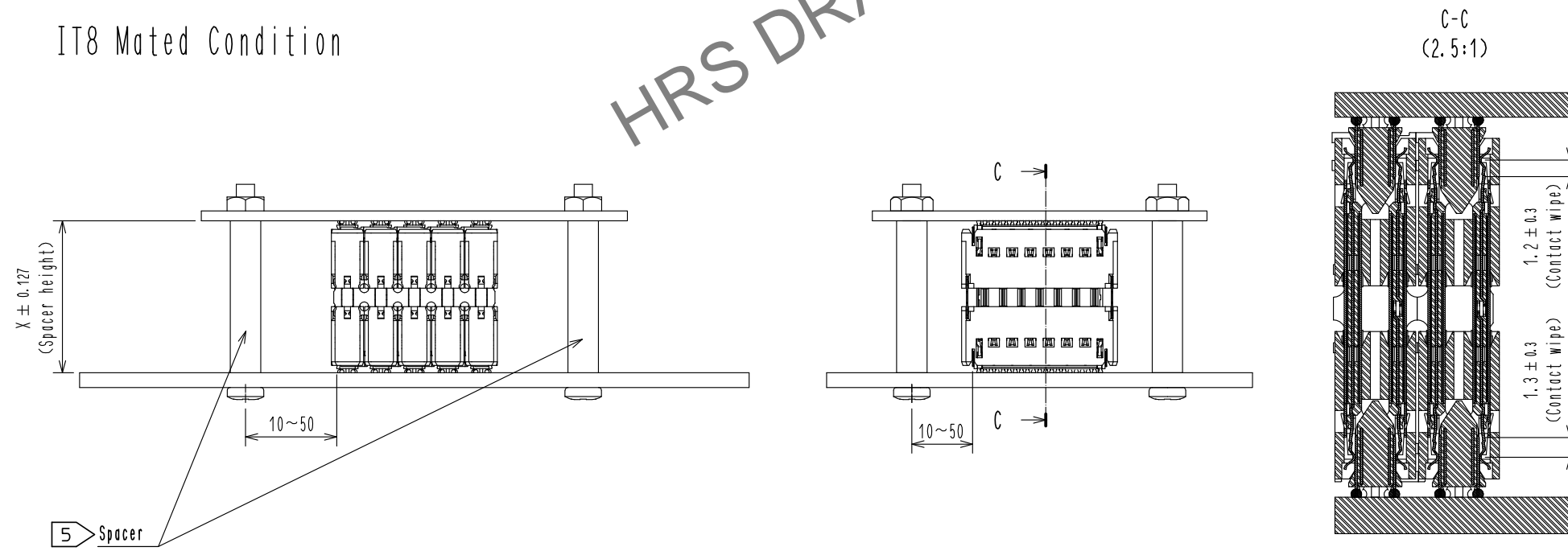


1) Insert mounting side of Interposer(IT8-\*\*\*S-\*\*H(\*\*)) by pressing on top of Interposer into reflowed Mounting Plug(IT8M-\*\*\*P-BGA-\*\*\*H(\*\*)) having black housings.

2) Insert Detachable Plug(IT8D-\*\*\*P-BGA-\*\*\*H(\*\*)) having gray housings into mating side of Interposer(IT8-\*\*\*S-\*\*H(\*\*)).

3) Install and tighten nuts to fix mated Detachable Plug after completion of mating.

## IT8 Mated Condition



**HRS**

DRAWING NO.	EDC-370993-00-00
PART NO.	IT8-192S-28H
CODE NO.	CL636-3510-0-00

2/2