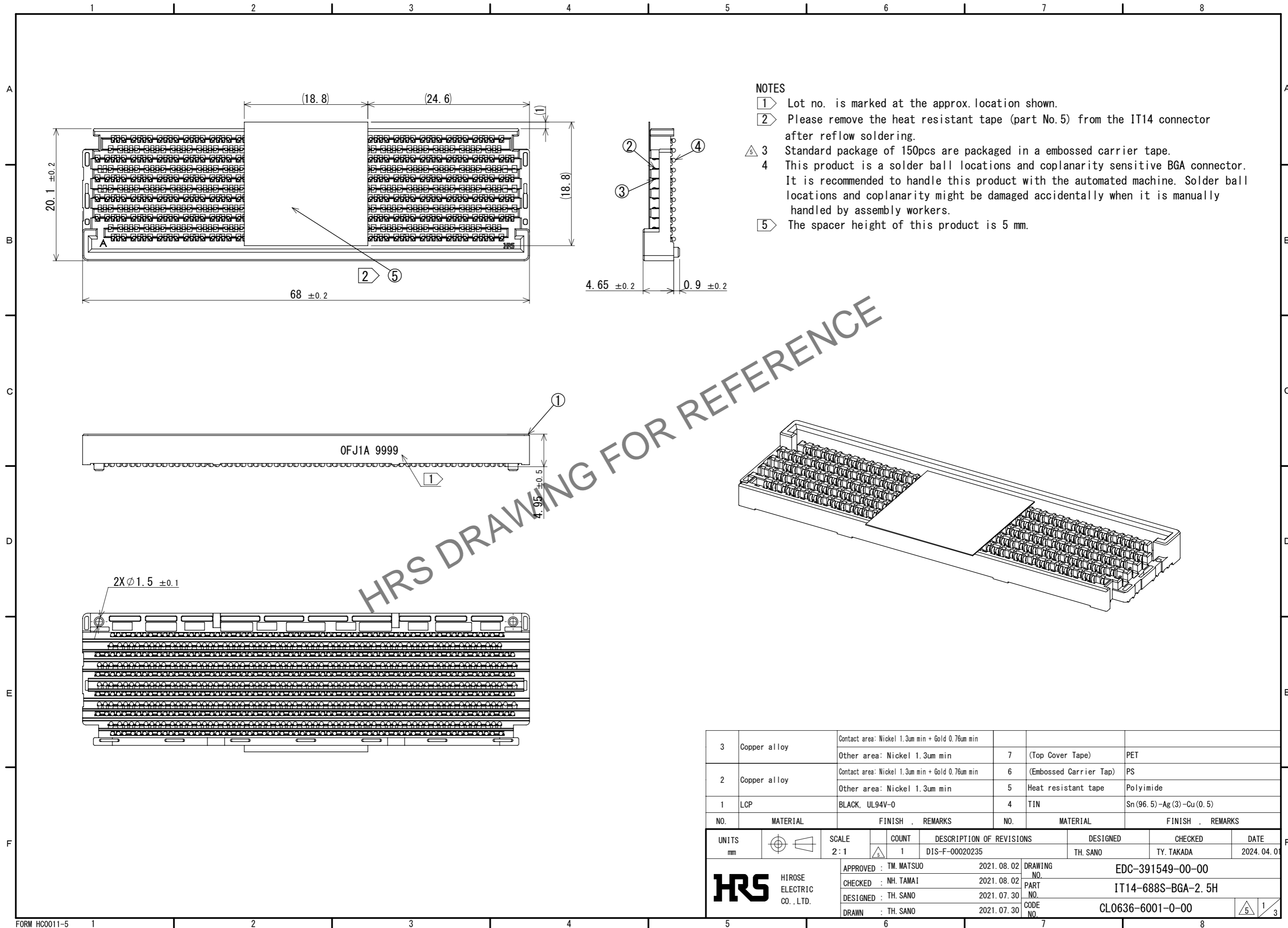


Mar.1.2025 Copyright 2025 HIROSE ELECTRIC CO., LTD. All Rights Reserved.
In case of consideration for using Automotive equipment / device which demand high reliability, kindly contact our sales window correspondents.



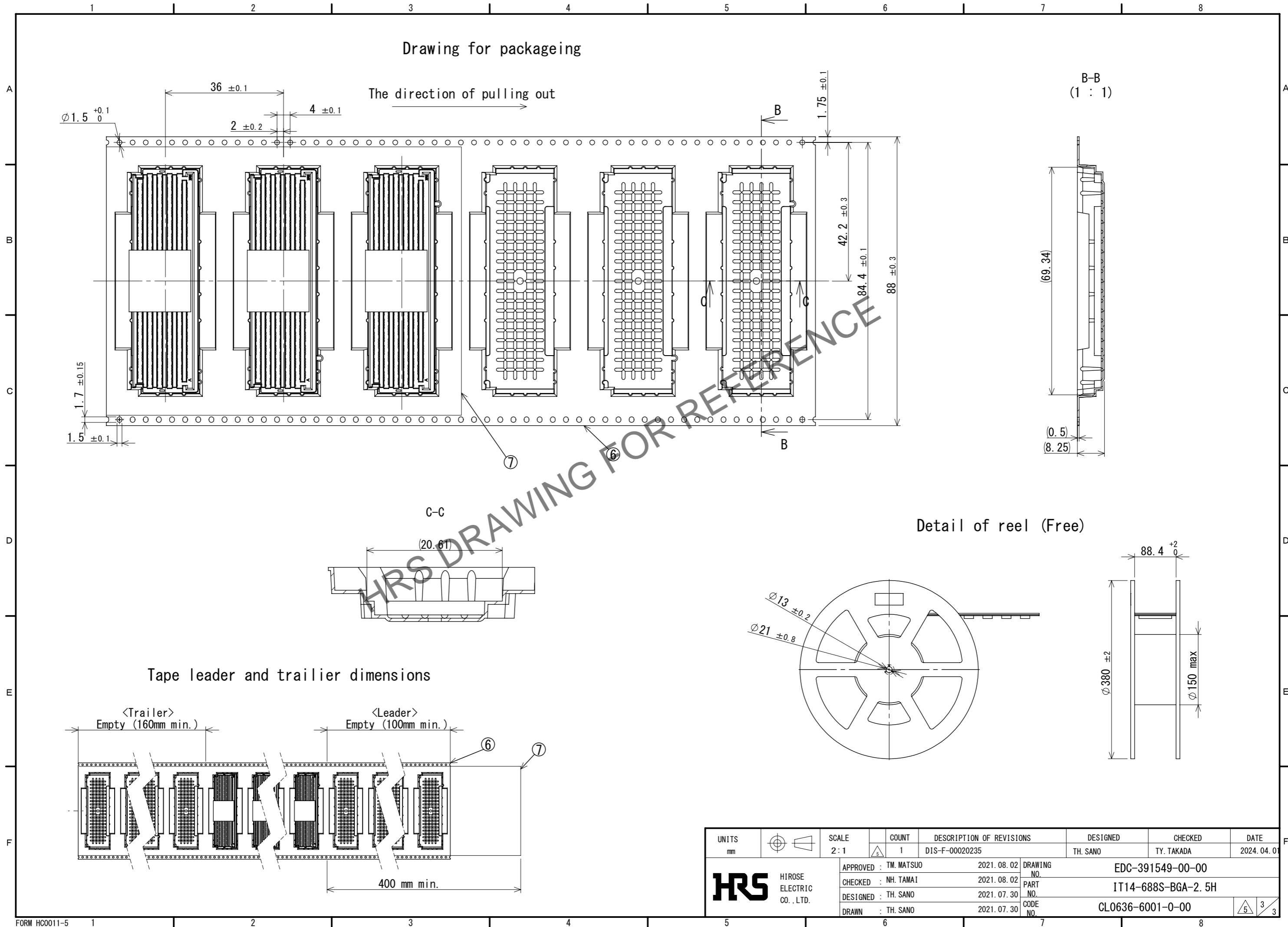
NOTES

- ① Lot no. is marked at the approx. location shown.
- ② Please remove the heat resistant tape (part No.5) from the IT14 connector after reflow soldering.
- ③ Standard package of 150pcs are packaged in a embossed carrier tape.
- ④ This product is a solder ball locations and coplanarity sensitive BGA connector. It is recommended to handle this product with the automated machine. Solder ball locations and coplanarity might be damaged accidentally when it is manually handled by assembly workers.
- ⑤ The spacer height of this product is 5 mm.

3	Copper alloy	Contact area: Nickel 1.3um min + Gold 0.76um min Other area: Nickel 1.3um min	7	(Top Cover Tape)	PET			
2	Copper alloy	Contact area: Nickel 1.3um min + Gold 0.76um min Other area: Nickel 1.3um min	6	(Embossed Carrier Tap)	PS			
1	LCP	BLACK, UL94V-0	5	Heat resistant tape	Polyimide			
			4	TIN	Sn (96.5) -Ag (3) -Cu (0.5)			
NO.	MATERIAL	FINISH , REMARKS	NO.	MATERIAL	FINISH , REMARKS			
UNITS		SCALE	COUNT	DESCRIPTION OF REVISIONS		DESIGNED	CHECKED	DATE
mm		2:1	1	DIS-F-00020235		TH. SANO	TY. TAKADA	2024. 04. 01
HIROSE ELECTRIC CO., LTD.		APPROVED :	TM. MATSUO	2021. 08. 02	DRAWING NO. EDC-391549-00-00			
		CHECKED :	NH. TAMAI	2021. 08. 02	PART NO. IT14-688S-BGA-2.5H			
		DESIGNED :	TH. SANO	2021. 07. 30	CODE NO. CL0636-6001-0-00			
		DRAWN :	TH. SANO	2021. 07. 30				
								1/3

Mar.1.2025 Copyright 2025 HIROSE ELECTRIC CO., LTD. All Rights Reserved.
 In case of consideration for using Automotive equipment / device which demand high reliability, kindly contact our sales window correspondents.

Drawing for packaging



UNITS	SCALE	COUNT	DESCRIPTION OF REVISIONS	DESIGNED	CHECKED	DATE
mm	2:1	1	DIS-F-00020235	TH. SANO	TY. TAKADA	2024. 04. 01
APPROVED : TM. MATSUO			2021. 08. 02	DRAWING NO. EDC-391549-00-00		
CHECKED : NH. TAMAI			2021. 08. 02	PART NO. IT14-688S-BGA-2. 5H		
DESIGNED : TH. SANO			2021. 07. 30	CODE NO. CL0636-6001-0-00		
DRAWN : TH. SANO			2021. 07. 30	3/3		



HIROSE ELECTRIC CO., LTD.