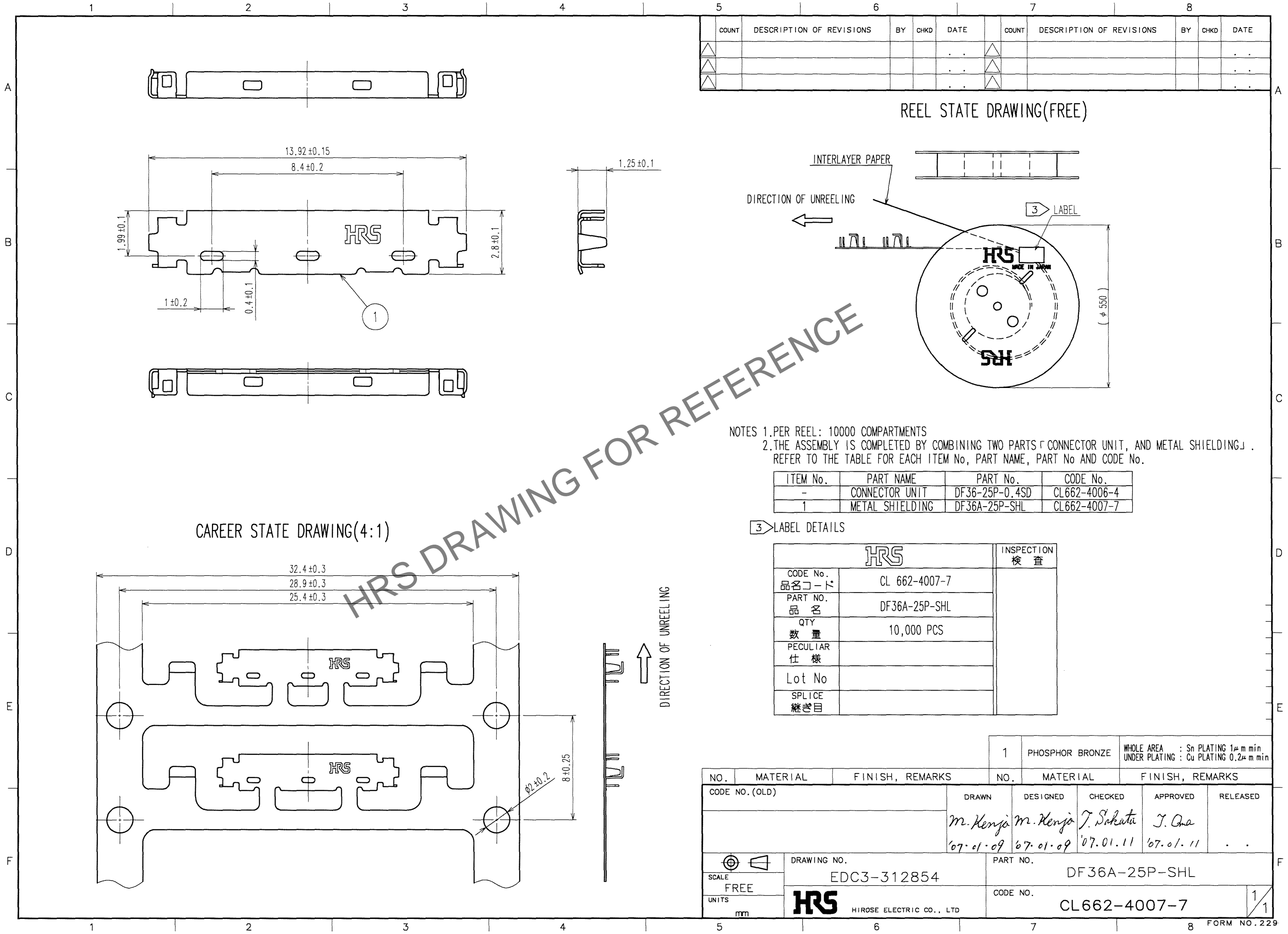


May.1.2024 Copyright 2024 HIROSE ELECTRIC CO., LTD. All Rights Reserved.
In case of consideration for using Automotive equipment / device which demand high reliability, kindly contact our sales window correspondents.



| COUNT | DESCRIPTION OF REVISIONS | BY | CHKD | DATE | COUNT | DESCRIPTION OF REVISIONS | BY | CHKD | DATE |
|-------|--------------------------|----|------|------|-------|--------------------------|----|------|------|
| △ | | | | | △ | | | | |
| △ | | | | | △ | | | | |
| △ | | | | | △ | | | | |

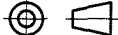

REEL STATE DRAWING(FREE)

NOTES 1.PER REEL: 10000 COMPARTMENTS
2.THE ASSEMBLY IS COMPLETED BY COMBINING TWO PARTS「CONNECTOR UNIT, AND METAL SHIELDING」.
REFER TO THE TABLE FOR EACH ITEM No, PART NAME, PART No AND CODE No.

| ITEM No. | PART NAME | PART No. | CODE No. |
|----------|-----------------|----------------|--------------|
| - | CONNECTOR UNIT | DF36-25P-0.4SD | CL662-4006-4 |
| 1 | METAL SHIELDING | DF36A-25P-SHL | CL662-4007-7 |

3> LABEL DETAILS

| HRS | | INSPECTION 検査 |
|-------------------|---------------|------------------|
| CODE No. 品名コード | CL 662-4007-7 | |
| PART NO. 品名 | DF36A-25P-SHL | |
| QTY 数量 | 10,000 PCS | |
| PECULIAR 仕様 | | |
| Lot No | | |
| SPLICE 継ぎ目 | | |

| | | | | | | | | | | | | | |
|---|--|--|--|-----------------------|-----------------|-----------------------|---|------------------------|--|---------------------|--|----------|--|
| | | | | 1 | PHOSPHOR BRONZE | | WHOLE AREA : Sn PLATING 1μ min UNDER PLATING : Cu PLATING 0.2μ min | | | | | | |
| NO. | | MATERIAL | | FINISH, REMARKS | | NO. | | MATERIAL | | FINISH, REMARKS | | | |
| CODE NO. (OLD) | | | | DRAWN | | DESIGNED | | CHECKED | | APPROVED | | RELEASED | |
| | | | | m. Kenjo '07.01.09 | | m. Kenjo '07.01.09 | | J. Sakata '07.01.11 | | J. Ono '07.01.11 | | . . | |
|  | | DRAWING NO. | | | | PART NO. | | | | | | | |
| SCALE | | EDC3-312854 | | | | DF36A-25P-SHL | | | | | | | |
| FREE | |  HIROSE ELECTRIC CO., LTD | | | | CODE NO. | | | | | | 1/1 | |
| UNITS | | | | | | CL662-4007-7 | | | | | | | |
| mm | | | | | | | | | | | | | |