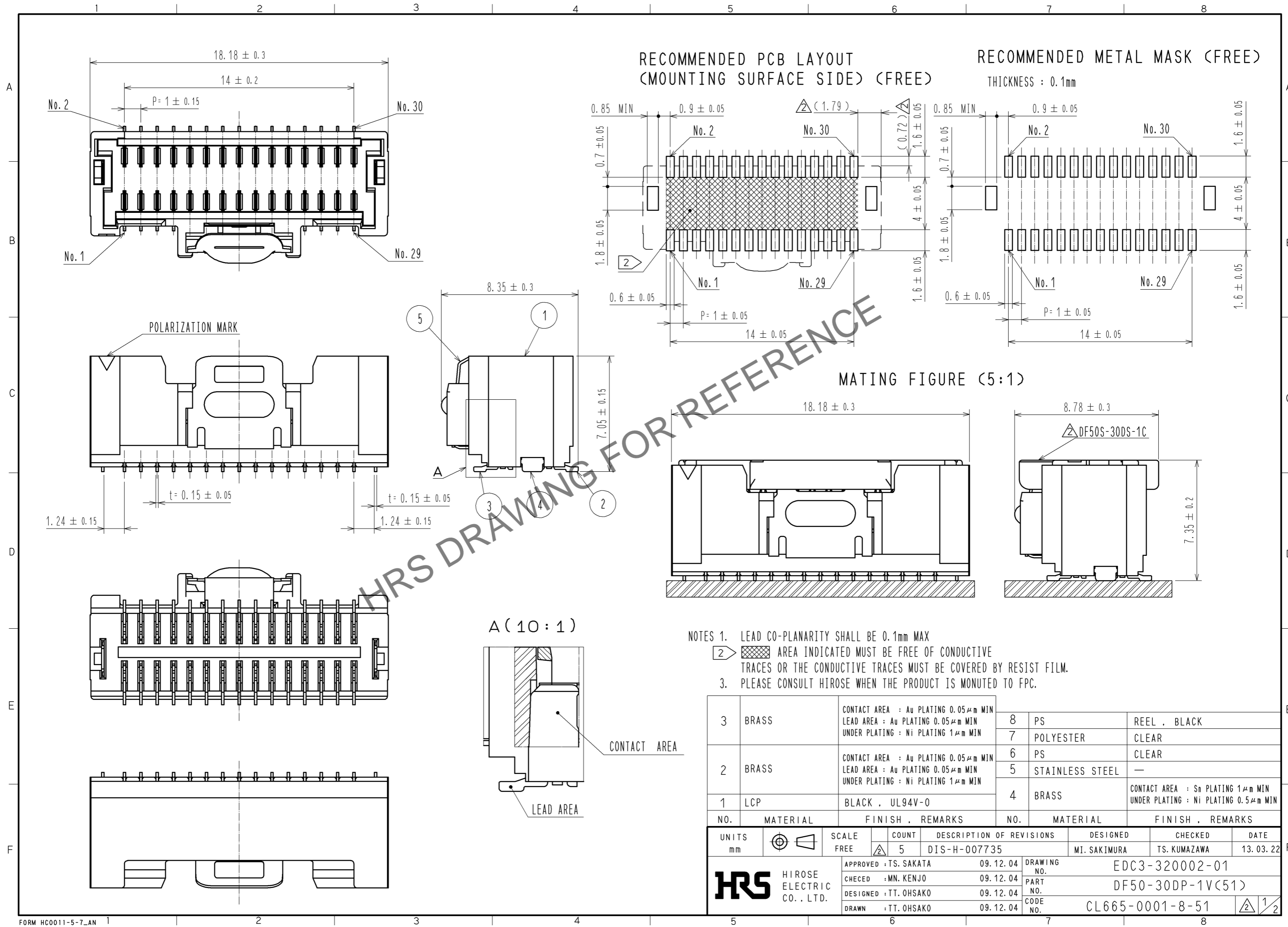


Aug.1.2024 Copyright 2024 HIROSE ELECTRIC CO., LTD. All Rights Reserved.  
In case of consideration for using Automotive equipment / device which demand high reliability, kindly contact our sales window correspondents.

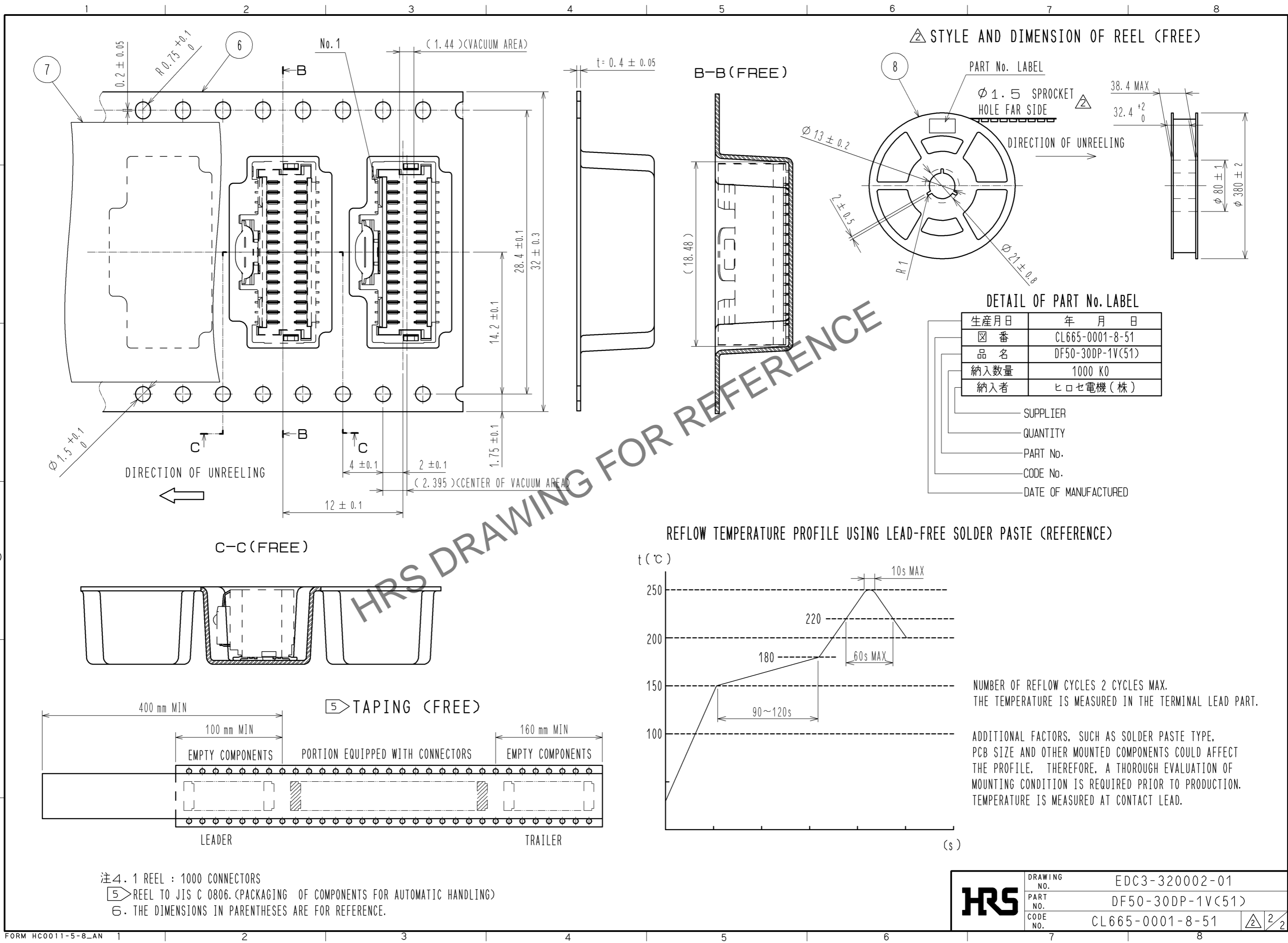


- NOTES 1. LEAD CO-PLANARITY SHALL BE 0.1mm MAX  
 2. AREA INDICATED MUST BE FREE OF CONDUCTIVE TRACES OR THE CONDUCTIVE TRACES MUST BE COVERED BY RESIST FILM.  
 3. PLEASE CONSULT HIROSE WHEN THE PRODUCT IS MONUTED TO FPC.

NO.	MATERIAL	FINISH . REMARKS	NO.	MATERIAL	FINISH . REMARKS
3	BRASS	CONTACT AREA : Au PLATING 0.05 $\mu$ m MIN LEAD AREA : Au PLATING 0.05 $\mu$ m MIN UNDER PLATING : Ni PLATING 1 $\mu$ m MIN	8	PS	REEL . BLACK
2	BRASS	CONTACT AREA : Au PLATING 0.05 $\mu$ m MIN LEAD AREA : Au PLATING 0.05 $\mu$ m MIN UNDER PLATING : Ni PLATING 1 $\mu$ m MIN	7	POLYESTER	CLEAR
			6	PS	CLEAR
1	LCP	BLACK . UL94V-0	5	STAINLESS STEEL	—
			4	BRASS	CONTACT AREA : Sn PLATING 1 $\mu$ m MIN UNDER PLATING : Ni PLATING 0.5 $\mu$ m MIN

UNITS	SCALE	COUNT	DESCRIPTION OF REVISIONS	DESIGNED	CHECKED	DATE
mm	FREE	5	DIS-H-007735	MI. SAKIMURA	TS. KUMAZAWA	13. 03. 22
APPROVED : TS. SAKATA			09. 12. 04	DRAWING NO. EDC3-320002-01		
CHECED : MN. KENJO			09. 12. 04	PART NO. DF50-30DP-1V(51)		
DESIGNED : TT. OHSAKO			09. 12. 04	CODE NO. CL665-0001-8-51		
DRAWN : TT. OHSAKO			09. 12. 04	1/2		

Aug.1.2024 Copyright 2024 HIROSE ELECTRIC CO., LTD. All Rights Reserved.  
In case of consideration for using Automotive equipment / device which demand high reliability, kindly contact our sales window correspondents.



<b>HRS</b>	DRAWING NO.	EDC3-320002-01
	PART NO.	DF50-30DP-1V(51)
	CODE NO.	CL665-0001-8-51
		2/2