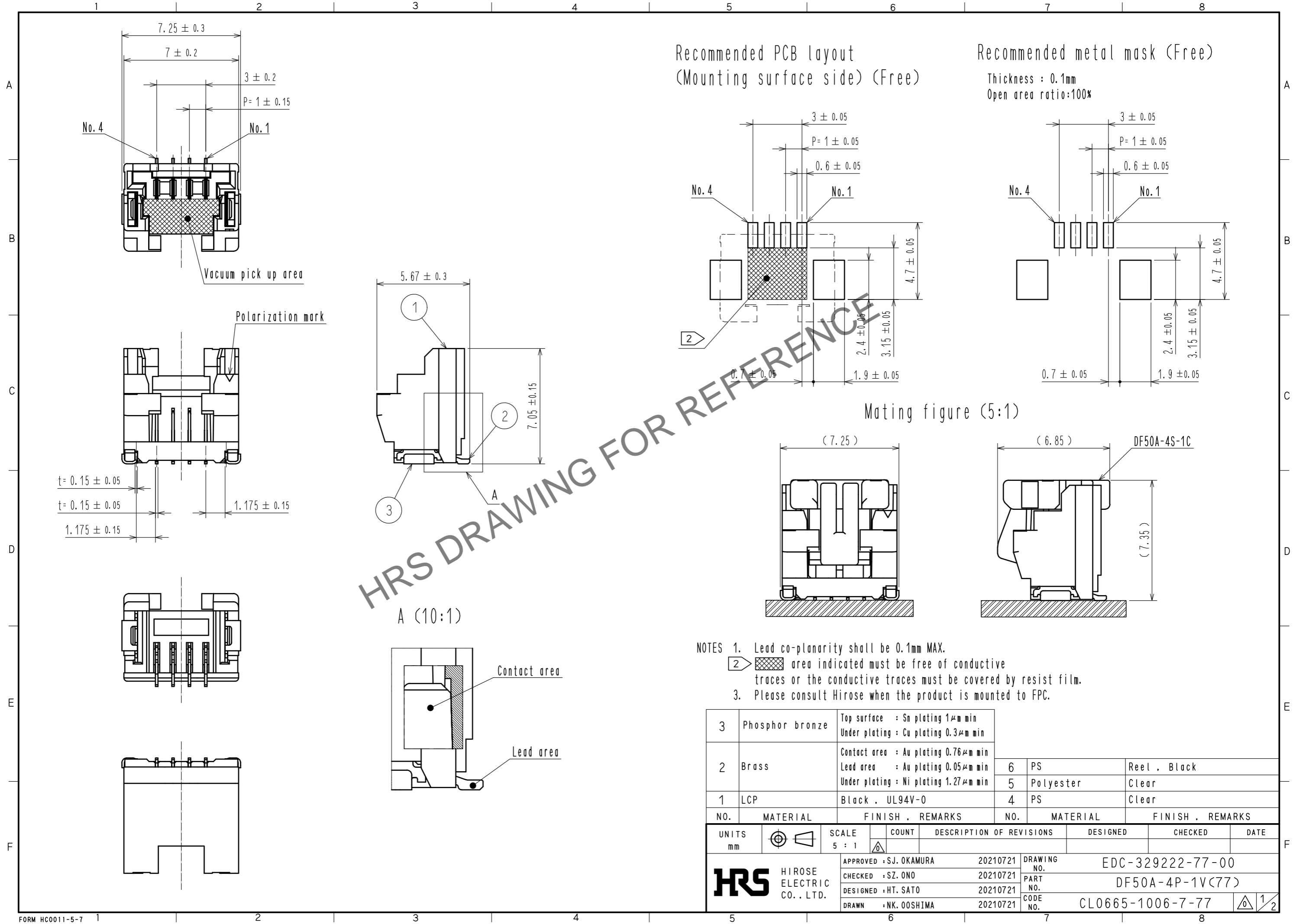


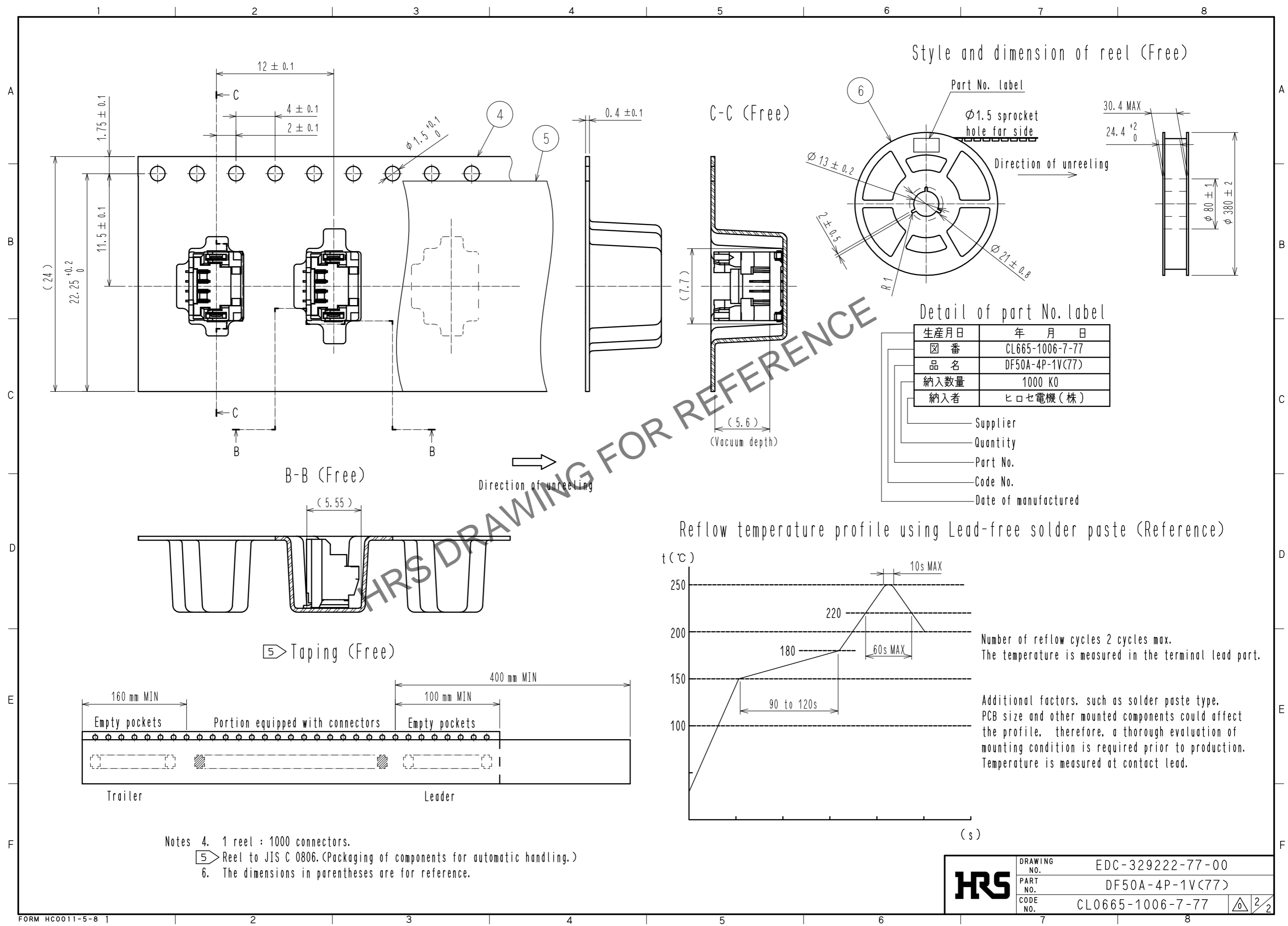
Sep.1.2024 Copyright 2024 HIROSE ELECTRIC CO., LTD. All Rights Reserved.
In case of consideration for using Automotive equipment / device which demand high reliability, kindly contact our sales window correspondents.



- NOTES
- Lead co-planarity shall be 0.1mm MAX.
 - area indicated must be free of conductive traces or the conductive traces must be covered by resist film.
 - Please consult Hirose when the product is mounted to FPC.

3	Phosphor bronze	Top surface : Sn plating 1μm min Under plating : Cu plating 0.3μm min			
2	Brass	Contact area : Au plating 0.76μm min Lead area : Au plating 0.05μm min Under plating : Ni plating 1.27μm min	6	PS	Reel , Black
1	LCP	Black , UL94V-0	5	Polyester	Clear
			4	PS	Clear
NO.	MATERIAL	FINISH , REMARKS	NO.	MATERIAL	FINISH , REMARKS
UNITS		SCALE	COUNT	DESCRIPTION OF REVISIONS	
mm		5 : 1		DESIGNED	CHECKED
HRS HIROSE ELECTRIC CO., LTD.		APPROVED : SJ. OKAMURA 20210721	DRAWING NO. EDC-329222-77-00		
		CHECKED : SZ. ONO 20210721	PART NO. DF50A-4P-1V(77)		
		DESIGNED : HT. SATO 20210721	CODE NO. CL0665-1006-7-77		
		DRAWN : NK. OOSHIMA 20210721	1/2		

Sep.1.2024 Copyright 2024 HIROSE ELECTRIC CO., LTD. All Rights Reserved.
In case of consideration for using Automotive equipment / device which demand high reliability, kindly contact our sales window correspondents.



HRS	DRAWING NO.	EDC-329222-77-00
	PART NO.	DF50A-4P-1V(77)
	CODE NO.	CL0665-1006-7-77
		△ 2/2