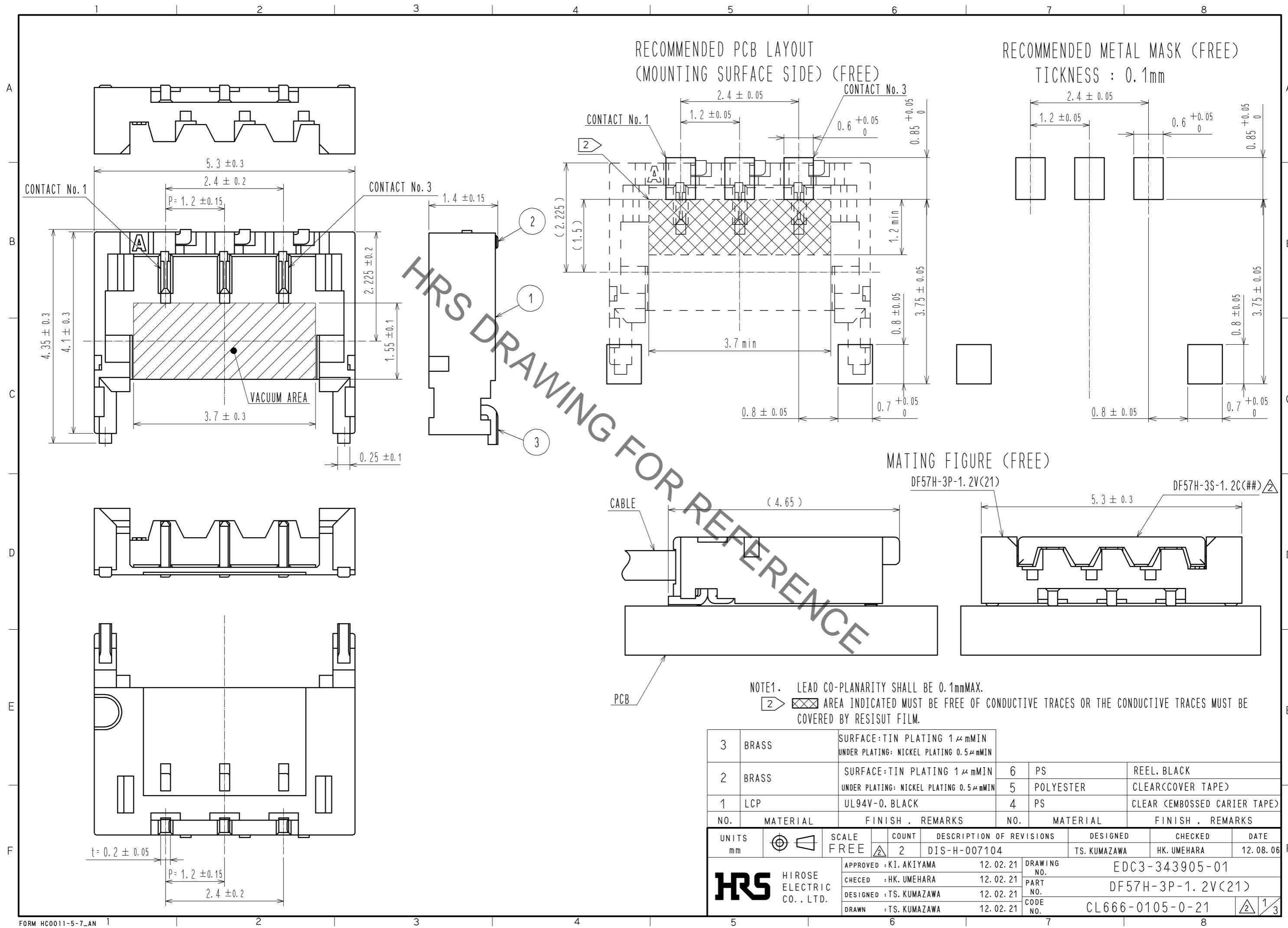
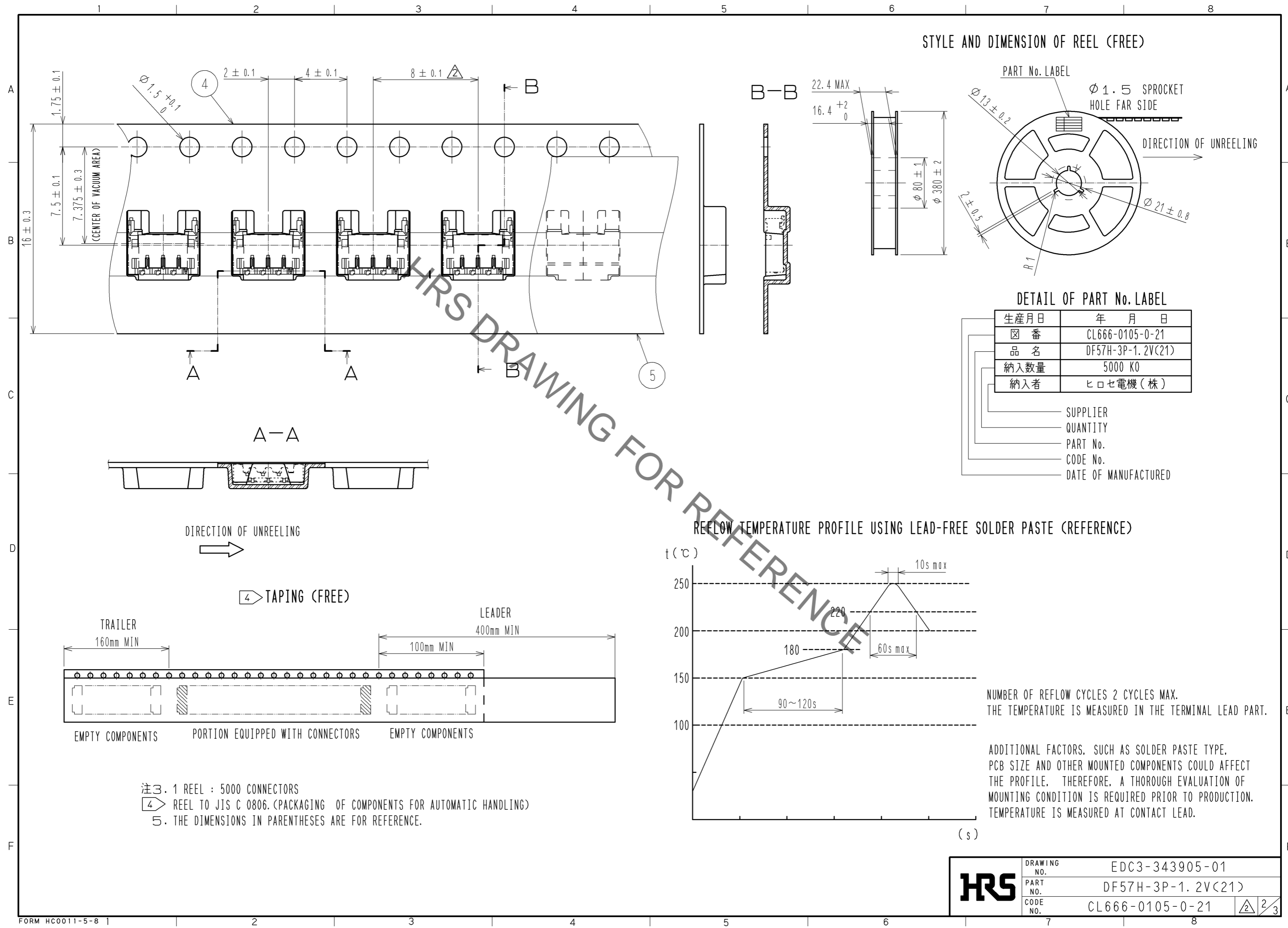


Jan.1.2022 Copyright 2022 HIROSE ELECTRIC CO., LTD. All Rights Reserved.  
 In case of consideration for using Automotive equipment / device which demand high reliability, kindly contact our sales window correspondents.

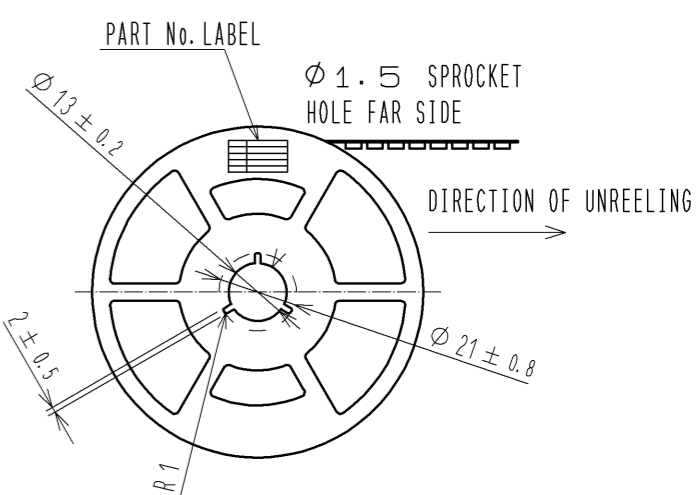


| 3                                    | BRASS    | SURFACE: TIN PLATING 1 μmMIN<br>UNDER PLATING: NICKEL PLATING 0.5 μmMIN | 6                          | PS                       | REEL, BLACK                   |
|--------------------------------------|----------|---|----------------------------|--------------------------|-------------------------------|
| 2                                    | BRASS    | SURFACE: TIN PLATING 1 μmMIN<br>UNDER PLATING: NICKEL PLATING 0.5 μmMIN | 5                          | POLYESTER                | CLEAR(COVER TAPE)             |
| 1                                    | LCP      | UL94V-0, BLACK  | 4                          | PS                       | CLEAR (EMBOSSED CARRIER TAPE) |
| NO.                                  | MATERIAL | FINISH, REMARKS   | NO.                        | MATERIAL                 | FINISH, REMARKS               |
| UNITS mm                             |          | SCALE FREE  | COUNT 2                    | DESCRIPTION OF REVISIONS |                               |
|                                      |          |   |                            | DESIGNED TS. KUMAZAWA    | CHECKED HK. UMEHARA           |
|                                      |          |   |                            | DATE 12.08.06            |                               |
| <b>HRS</b> HIROSE ELECTRIC CO., LTD. |          | APPROVED : KI. AKIYAMA 12.02.21   | DRAWING NO. EDC3-343905-01 |                          |                               |
|                                      |          | CHECED : HK. UMEHARA 12.02.21   | PART NO. DF57H-3P-1.2V(21) |                          |                               |
|                                      |          | DESIGNED : TS. KUMAZAWA 12.02.21  | CODE NO. CL666-0105-0-21   |                          |                               |
|                                      |          | DRAWN : TS. KUMAZAWA 12.02.21   | 1/3                        |                          |                               |

Jan.1.2022 Copyright 2022 HIROSE ELECTRIC CO., LTD. All Rights Reserved.  
 In case of consideration for using Automotive equipment / device which demand high reliability, kindly contact our sales window correspondents.



STYLE AND DIMENSION OF REEL (FREE)

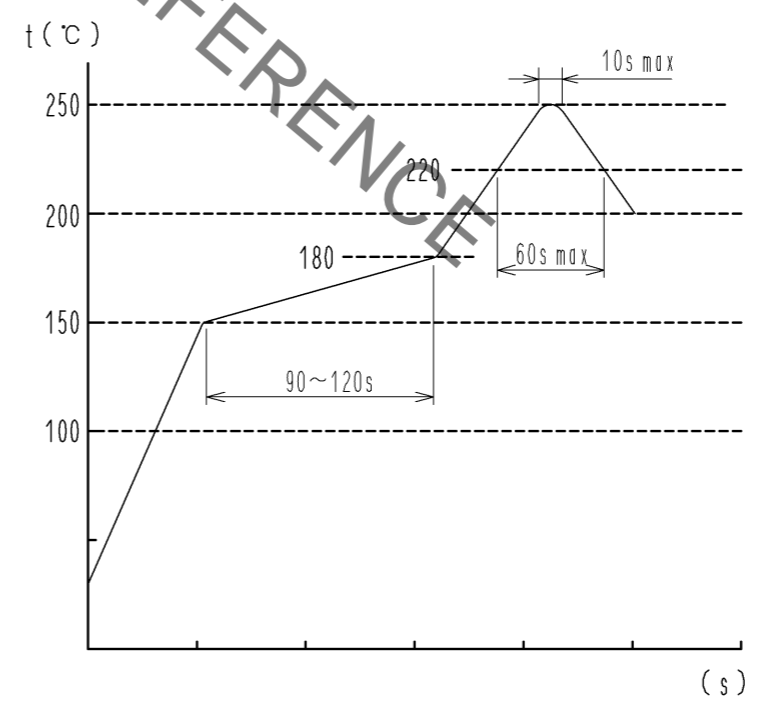


DETAIL OF PART No. LABEL

|      |                   |
|------|-------------------|
| 生産月日 | 年 月 日             |
| 図 番  | CL666-0105-0-21   |
| 品 名  | DF57H-3P-1.2V(21) |
| 納入数量 | 5000 K0           |
| 納入者  | ヒロセ電機(株)          |

\_\_\_\_\_ SUPPLIER  
 \_\_\_\_\_ QUANTITY  
 \_\_\_\_\_ PART No.  
 \_\_\_\_\_ CODE No.  
 \_\_\_\_\_ DATE OF MANUFACTURED

REFLOW TEMPERATURE PROFILE USING LEAD-FREE SOLDER PASTE (REFERENCE)



NUMBER OF REFLOW CYCLES 2 CYCLES MAX.  
 THE TEMPERATURE IS MEASURED IN THE TERMINAL LEAD PART.

ADDITIONAL FACTORS, SUCH AS SOLDER PASTE TYPE, PCB SIZE AND OTHER MOUNTED COMPONENTS COULD AFFECT THE PROFILE. THEREFORE, A THOROUGH EVALUATION OF MOUNTING CONDITION IS REQUIRED PRIOR TO PRODUCTION. TEMPERATURE IS MEASURED AT CONTACT LEAD.

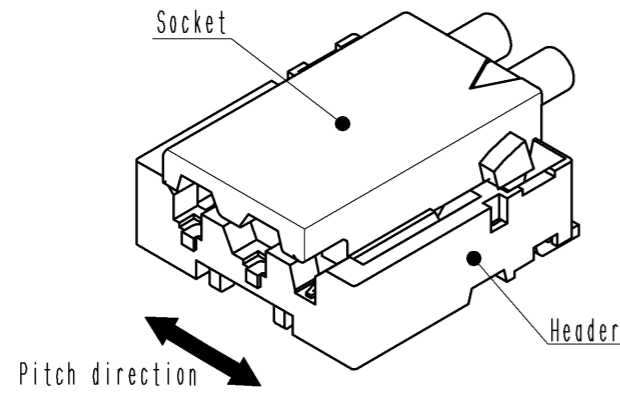
- 注3. 1 REEL : 5000 CONNECTORS  
 4 REEL TO JIS C 0806. (PACKAGING OF COMPONENTS FOR AUTOMATIC HANDLING)  
 5. THE DIMENSIONS IN PARENTHESES ARE FOR REFERENCE.

|            |             |                   |
|------------|-------------|-------------------|
| <b>HRS</b> | DRAWING NO. | EDC3-343905-01    |
|            | PART NO.    | DF57H-3P-1.2V(21) |
|            | CODE NO.    | CL666-0105-0-21   |
|            |             | 2/3               |

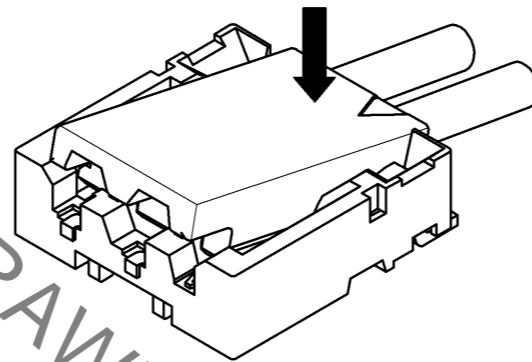
# DF57 Series Mating / Unmating Operation Instruction (For DF57 series)

## Mating

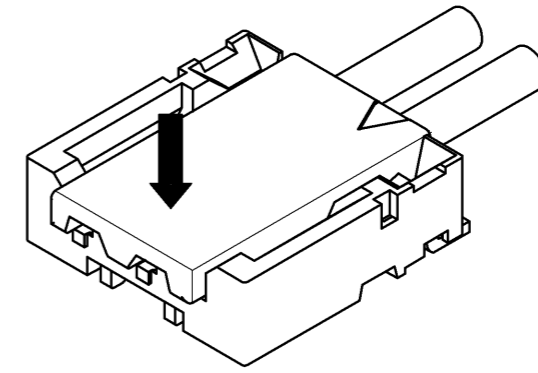
① By positioning the convexity of the socket sides to the header concavity, align the centers of the socket and the header in pitch direction.



② Slightly press the socket down at cable side to tilted angle.

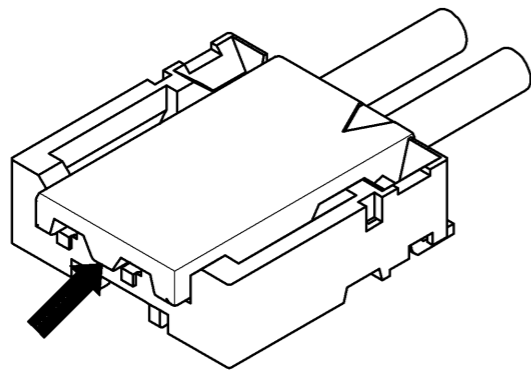


③ Press down at the lever side with stabilizing the cable side to insert. Mating completes.

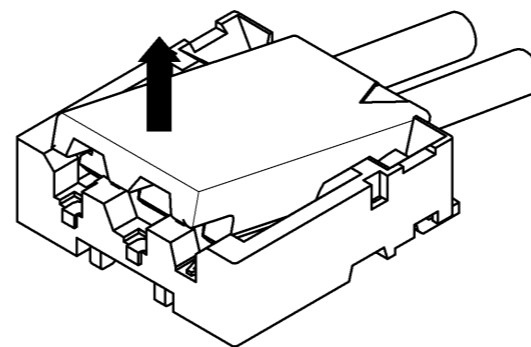


## Unmating

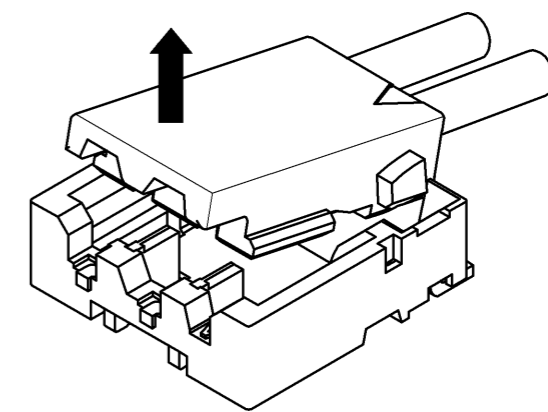
① Hook the lever with finger nail.



② Lift up to the upper direction and friction lock is released.



③ Lift up to the upper direction and positive lock is released. Removal completes.



HRS DRAWING FOR REFERENCE

|            |             |                   |
|------------|-------------|-------------------|
| <b>HRS</b> | DRAWING NO. | EDC3-343905-01    |
|            | PART NO.    | DF57H-3P-1.2V(21) |
|            | CODE NO.    | CL666-0105-0-21   |
|            |             | 3/3               |

Jan.1.2022 Copyright 2022 HIROSE ELECTRIC CO., LTD. All Rights Reserved. In case of consideration for using Automotive equipment / device which demand high reliability, kindly contact our sales window correspondents.