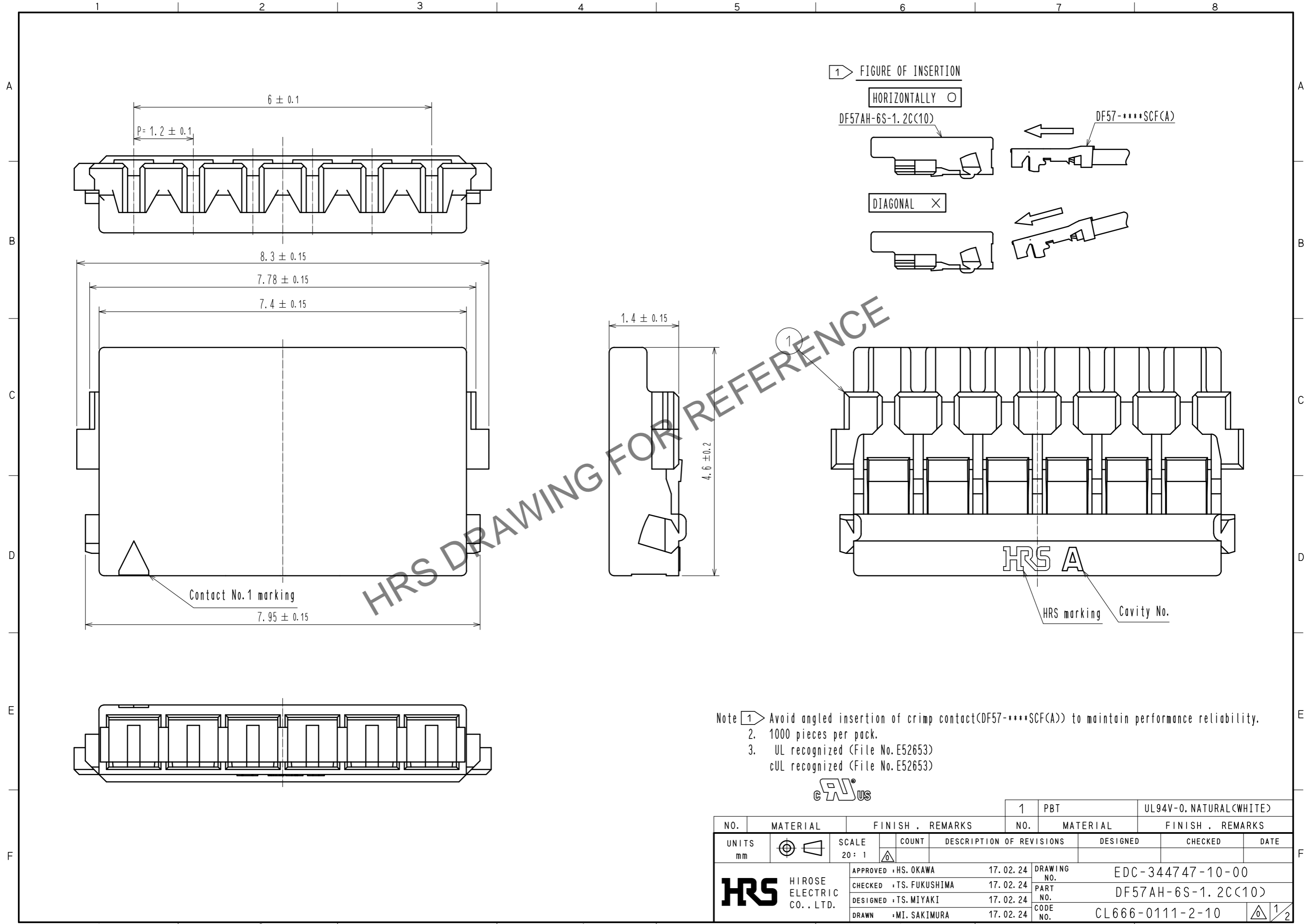


Jun.1.2024 Copyright 2024 HIROSE ELECTRIC CO., LTD. All Rights Reserved.  
 In case of consideration for using Automotive equipment / device which demand high reliability, kindly contact our sales window correspondents.



HRS DRAWING FOR REFERENCE

- Note 1: Avoid angled insertion of crimp contact(DF57-\*\*\*\*SCF(A)) to maintain performance reliability.  
 2. 1000 pieces per pack.  
 3. UL recognized (File No. E52653)  
 cUL recognized (File No. E52653)

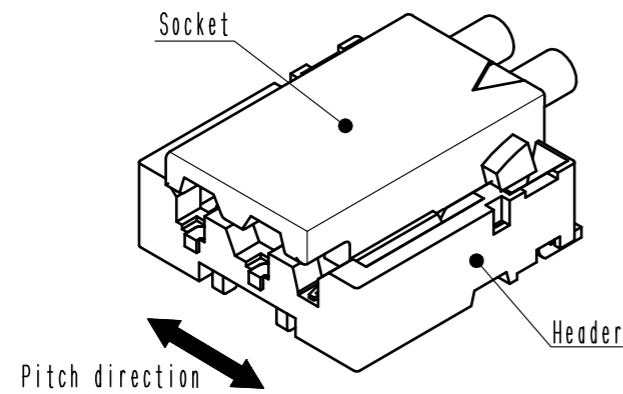


NO.	MATERIAL	FINISH . REMARKS	NO.	MATERIAL	FINISH . REMARKS
			1	PBT	UL94V-0. NATURAL(WHITE)
UNITS	mm	SCALE	DESCRIPTION OF REVISIONS		
		20:1	DESIGNED	CHECKED	DATE
HIROSE ELECTRIC CO., LTD.		APPROVED : HS. OKAWA	17.02.24	DRAWING NO. EDC-344747-10-00	
		CHECKED : TS. FUKUSHIMA	17.02.24	PART NO. DF57AH-6S-1.2C(10)	
		DESIGNED : TS. MIYAKI	17.02.24	CODE NO. CL666-0111-2-10	
		DRAWN : MI. SAKIMURA	17.02.24	1/2	

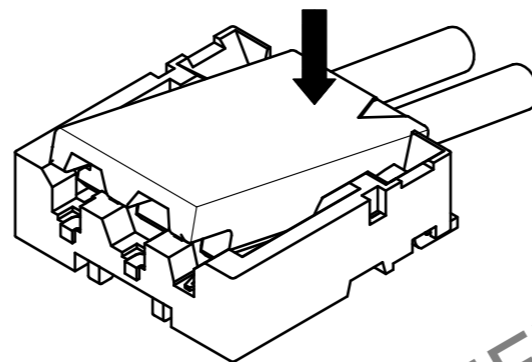
# DF57 Series Mating / Unmating Operation Instruction (For DF57 series)

## Mating

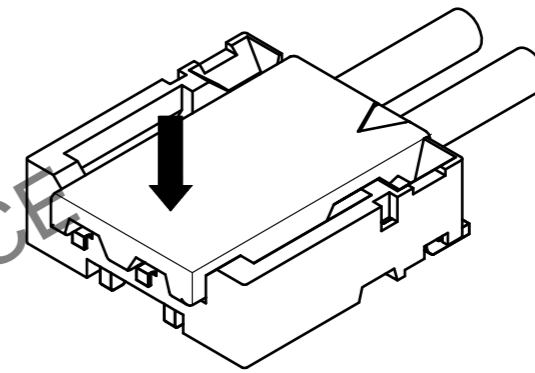
① By positioning the convexity of the socket sides to the header concavity, align the centers of the socket and the header in pitch direction.



② Slightly press the socket down at cable side to tilted angle.

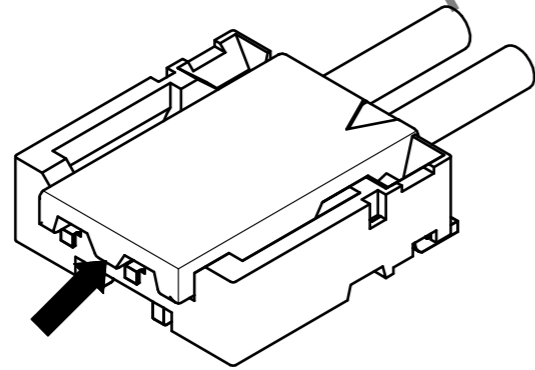


③ Press down at the lever side with stabilizing the cable side to insert. Mating completes.

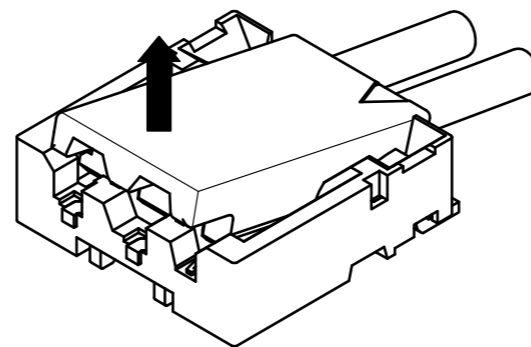


## Unmating

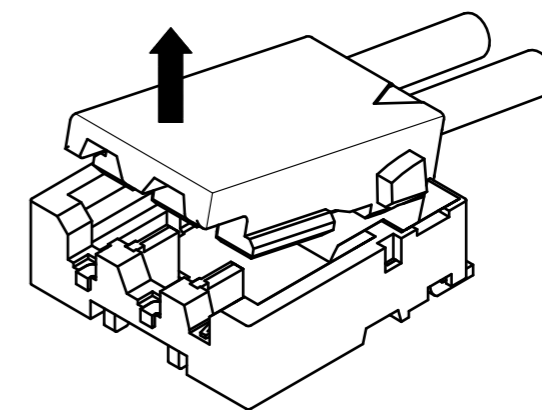
① Hook the lever with finger nail.



② Lift up to the upper direction and friction lock is released.



③ Lift up to the upper direction and positive lock is released. Removal completes.



HRS DRAWING FOR REFERENCE

<b>HRS</b>	DRAWING NO.	EDC-344747-10-00
	PART NO.	DF57AH-6S-1.2C<10>
	CODE NO.	CL666-0111-2-10
		2/2

Jun.1.2024 Copyright 2024 HIROSE ELECTRIC CO., LTD. All Rights Reserved. In case of consideration for using Automotive equipment / device which demand high reliability, kindly contact our sales window correspondents.