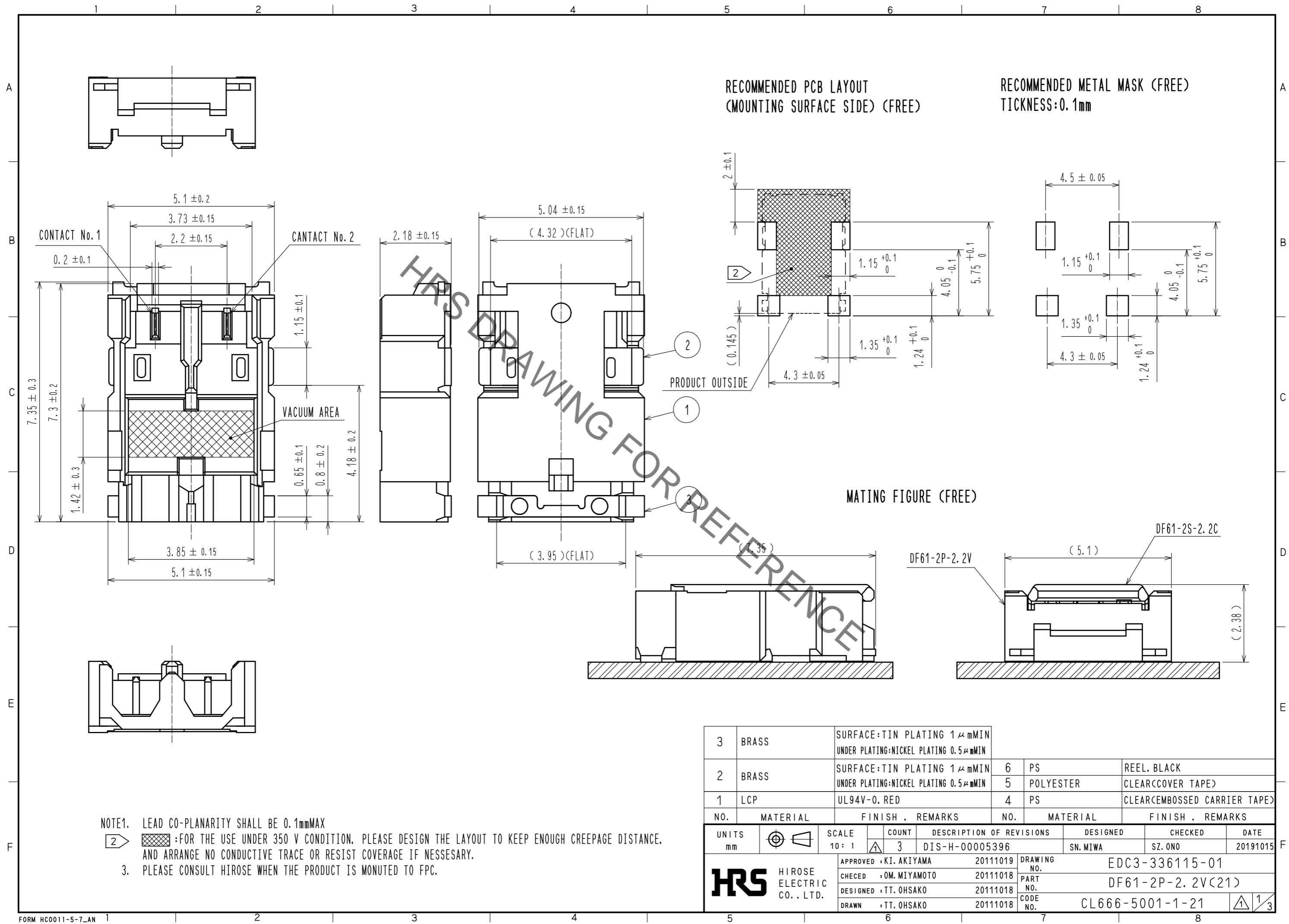


Dec.1.2021 Copyright 2021 HIROSE ELECTRIC CO., LTD. All Rights Reserved.  
 In case of consideration for using Automotive equipment / device which demand high reliability, kindly contact our sales window correspondents.



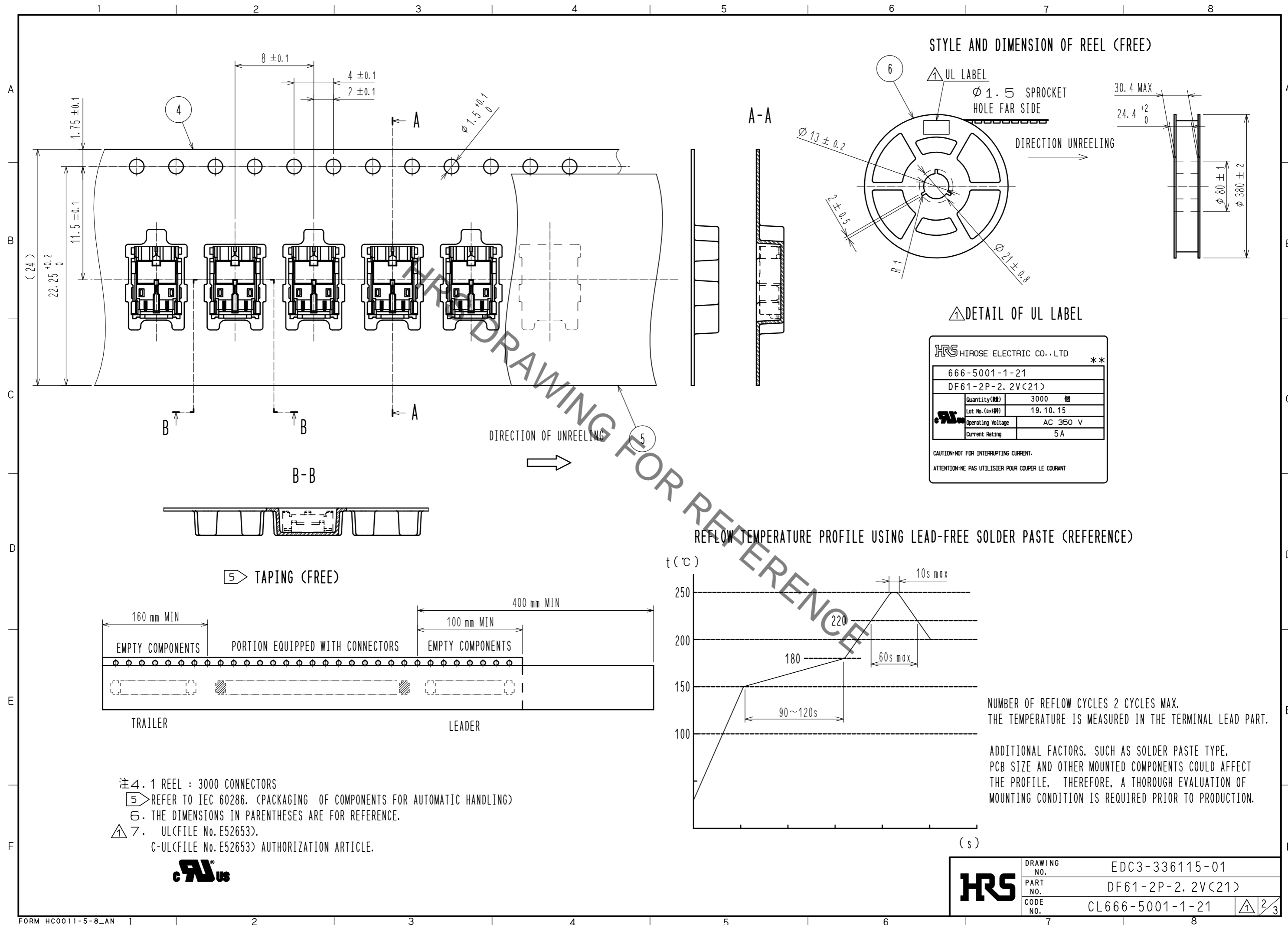
NOTE1. LEAD CO-PLANARITY SHALL BE 0.1mmMAX

2. :FOR THE USE UNDER 350 V CONDITION. PLEASE DESIGN THE LAYOUT TO KEEP ENOUGH CREEPAGE DISTANCE, AND ARRANGE NO CONDUCTIVE TRACE OR RESIST COVERAGE IF NECESSARY.

3. PLEASE CONSULT HIROSE WHEN THE PRODUCT IS MOUNTED TO FPC.

3	BRASS	SURFACE:TIN PLATING 1 μmMIN UNDER PLATING:NICKEL PLATING 0.5 μmMIN			
2	BRASS	SURFACE:TIN PLATING 1 μmMIN UNDER PLATING:NICKEL PLATING 0.5 μmMIN	6	PS	REEL. BLACK
1	LCP	UL94V-0. RED	5	POLYESTER	CLEAR(COVER TAPE)
			4	PS	CLEAR(EMBOSSED CARRIER TAPE)
NO.	MATERIAL	FINISH . REMARKS	NO.	MATERIAL	FINISH . REMARKS
UNITS		SCALE	COUNT	DESCRIPTION OF REVISIONS	
mm		10: 1	3	DIS-H-00005396	
APPROVED : KI. AKIYAMA			20111019	DESIGNED	SN. MIWA
CHECED : OM. MIYAMOTO			20111018	CHECKED	SZ. ONO
DESIGNED : TT. OHSAKO			20111018	DATE	20191015
DRAWN : TT. OHSAKO			20111018		
<b>HRS</b> HIROSE ELECTRIC CO., LTD.			DRAWING NO.		EDC3-336115-01
			PART NO.		DF61-2P-2.2V(21)
			CODE NO.		CL666-5001-1-21
					1/3

Dec.1.2021 Copyright 2021 HIROSE ELECTRIC CO., LTD. All Rights Reserved.  
 In case of consideration for using Automotive equipment / device which demand high reliability, kindly contact our sales window correspondents.



<b>HRS</b>	DRAWING NO.	EDC3-336115-01
	PART NO.	DF61-2P-2.2V(21)
	CODE NO.	CL666-5001-1-21
		2/3

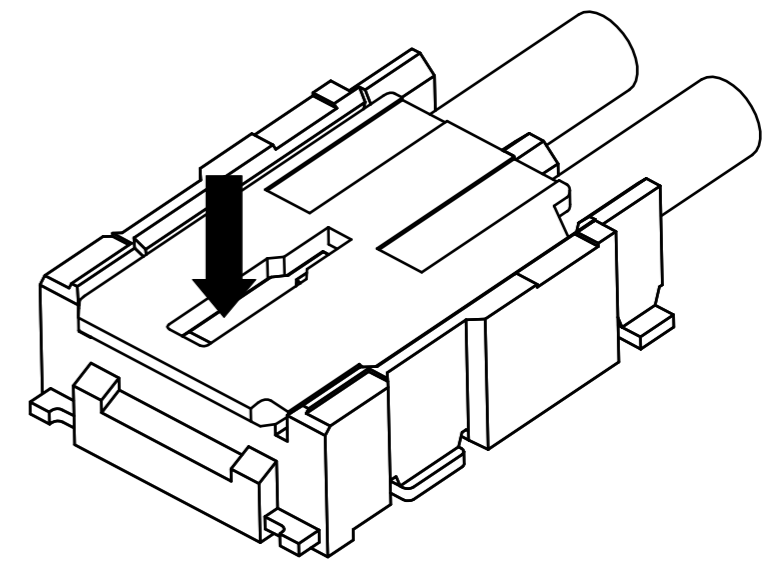
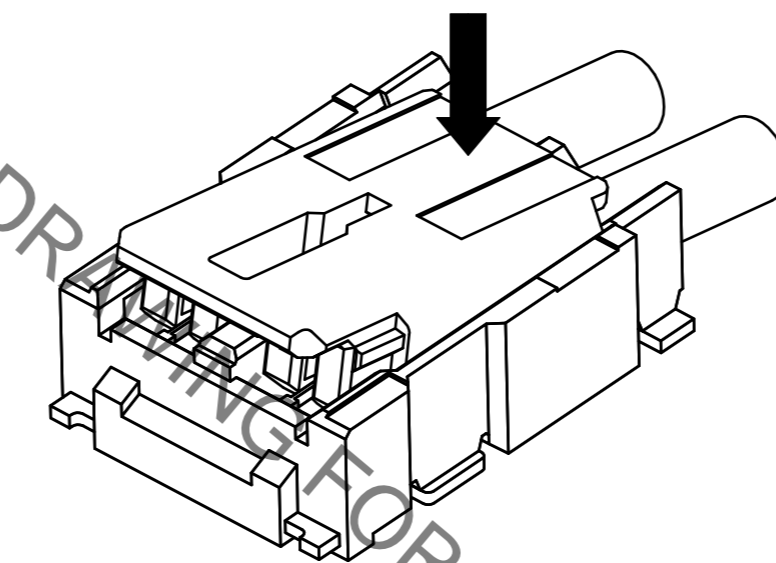
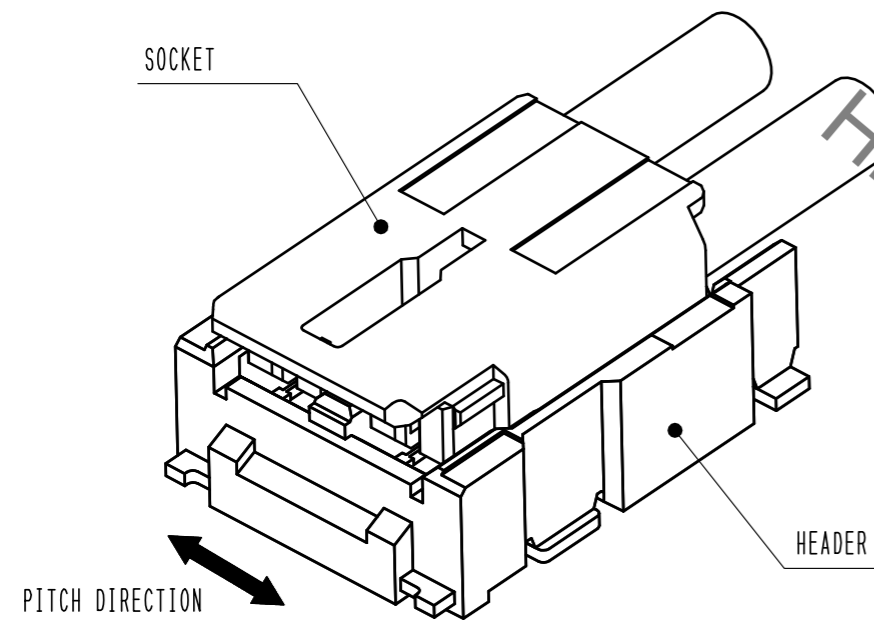
# DF61 Series Mating / Unmating Operation Instruction

## Mating

① By positioning the convexity of the socket sides to the header concavity, align the centers of the socket and the header in pitch direction.

② Slightly press the socket down at cable side to tilted angle.

③ Press down at the lever side with stabilizing the cable side to insert. Mating completes.

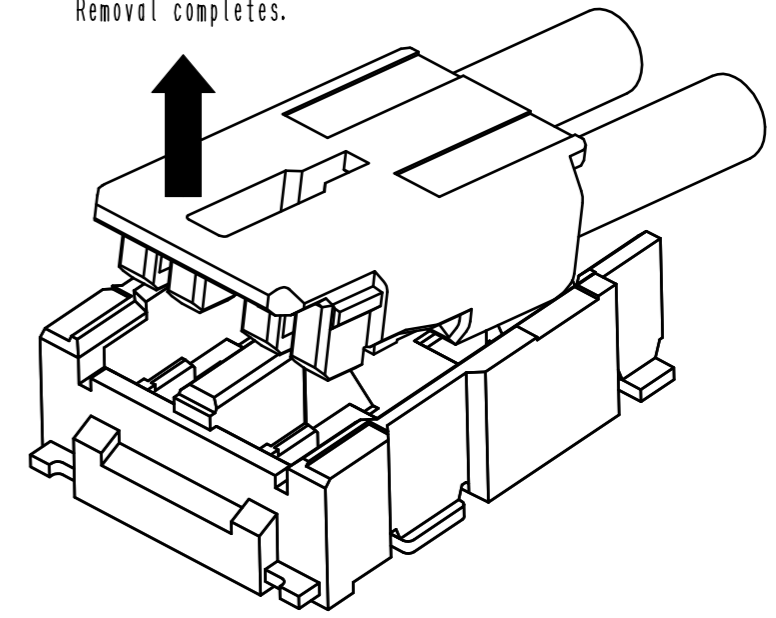
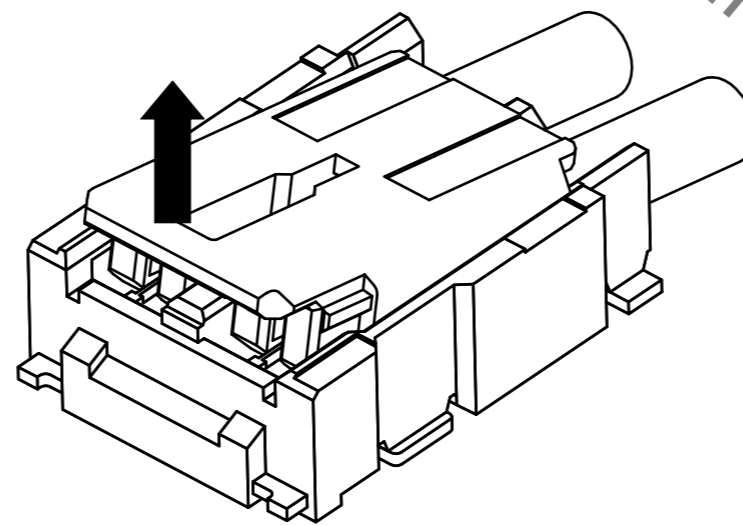
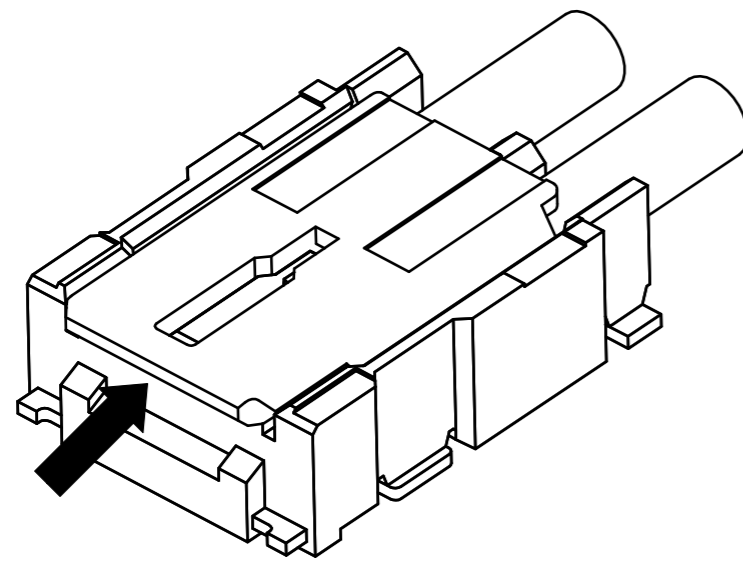


## Unmating

① Hook the lever with finger nail.

② Lift up to the upper direction and friction lock is released.

③ Lift up to the upper direction and positive lock is released. Removal completes.



**HRS**

図番: EDC3-336115-01  
 製品名: DF61-2P-2.2V(21)  
 製品コード: CL666-5001-1-21

3/3