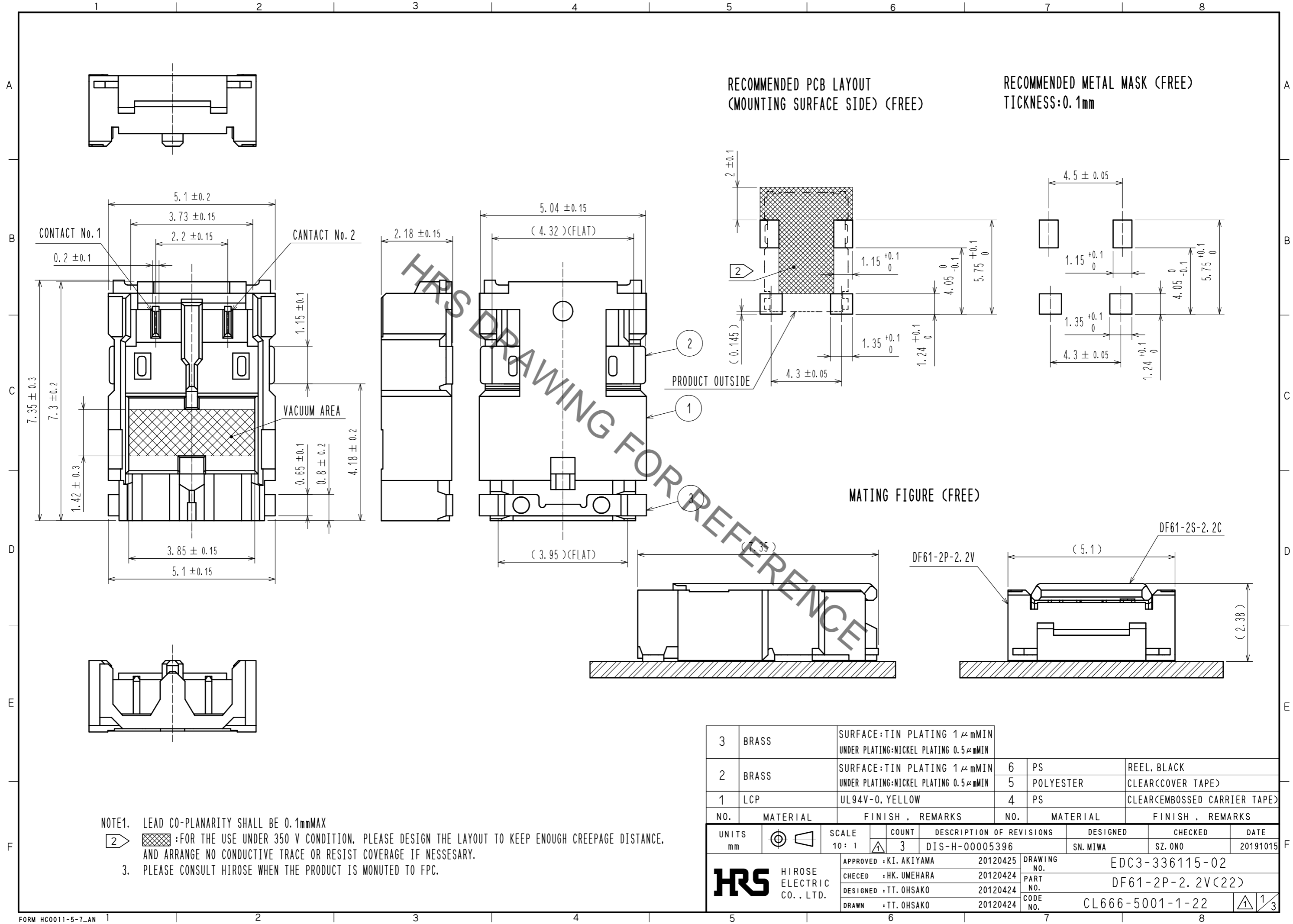


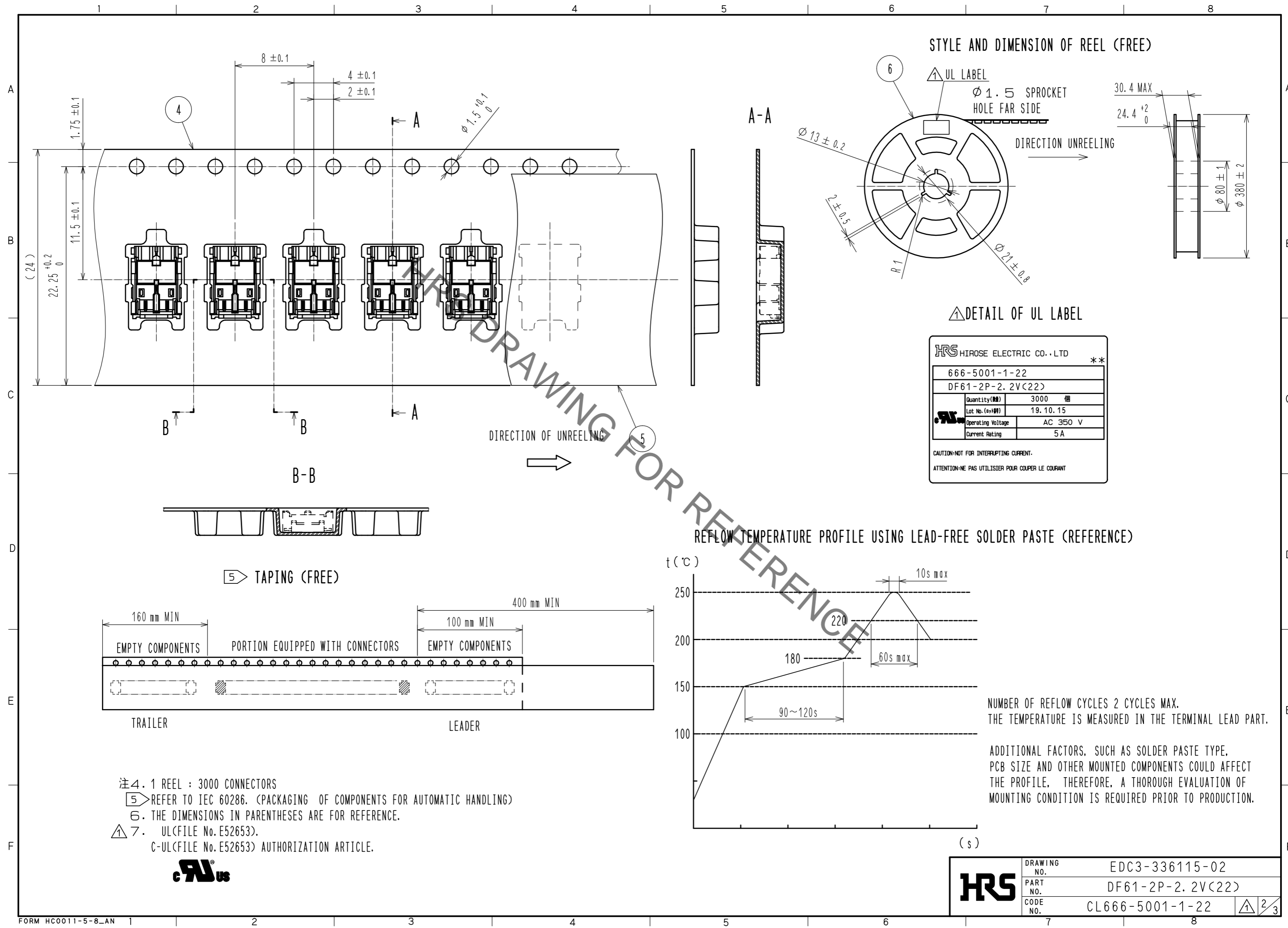
Jan.1.2022 Copyright 2022 HIROSE ELECTRIC CO., LTD. All Rights Reserved.
In case of consideration for using Automotive equipment / device which demand high reliability, kindly contact our sales window correspondents.



NOTE1. LEAD CO-PLANARITY SHALL BE 0.1mmMAX
 2. :FOR THE USE UNDER 350 V CONDITION. PLEASE DESIGN THE LAYOUT TO KEEP ENOUGH CREEPAGE DISTANCE, AND ARRANGE NO CONDUCTIVE TRACE OR RESIST COVERAGE IF NECESSARY.
 3. PLEASE CONSULT HIROSE WHEN THE PRODUCT IS MONUTED TO FPC.

3	BRASS	SURFACE:TIN PLATING 1μmMIN UNDER PLATING:NICKEL PLATING 0.5μmMIN			
2	BRASS	SURFACE:TIN PLATING 1μmMIN UNDER PLATING:NICKEL PLATING 0.5μmMIN	6	PS	REEL. BLACK
1	LCP	UL94V-0. YELLOW	5	POLYESTER	CLEAR(COVER TAPE)
			4	PS	CLEAR(EMBOSSD CARRIER TAPE)
NO.	MATERIAL	FINISH . REMARKS	NO.	MATERIAL	FINISH . REMARKS
UNITS		SCALE	COUNT	DESCRIPTION OF REVISIONS	
mm		10: 1	3	DIS-H-00005396	
APPROVED : KI. AKIYAMA			20120425	DESIGNED	SN. MIWA
CHECED : HK. UMEHARA			20120424	CHECKED	SZ. ONO
DESIGNED : TT. OHSAKO			20120424	DATE	20191015
DRAWN : TT. OHSAKO			20120424		
HRS HIROSE ELECTRIC CO., LTD.			DRAWING NO.	EDC3-336115-02	
			PART NO.	DF61-2P-2.2V(22)	
			CODE NO.	CL666-5001-1-22	
			1/3		

Jan.1.2022 Copyright 2022 HIROSE ELECTRIC CO., LTD. All Rights Reserved.
 In case of consideration for using Automotive equipment / device which demand high reliability, kindly contact our sales window correspondents.



注4. 1 REEL : 3000 CONNECTORS
 5 REFER TO IEC 60286. (PACKAGING OF COMPONENTS FOR AUTOMATIC HANDLING)
 6. THE DIMENSIONS IN PARENTHESES ARE FOR REFERENCE.
 7. UL(FILE No. E52653).
 C-UL(FILE No. E52653) AUTHORIZATION ARTICLE.



HRS	DRAWING NO.	EDC3-336115-02
	PART NO.	DF61-2P-2.2V(22)
	CODE NO.	CL666-5001-1-22

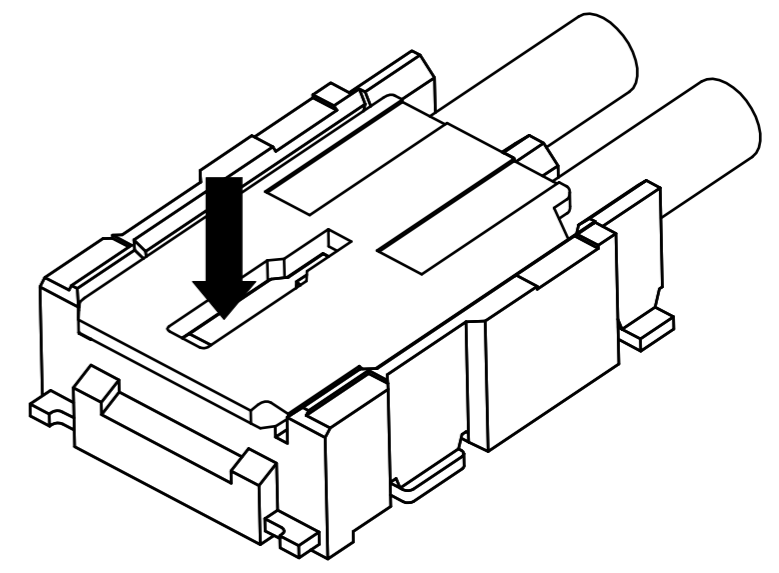
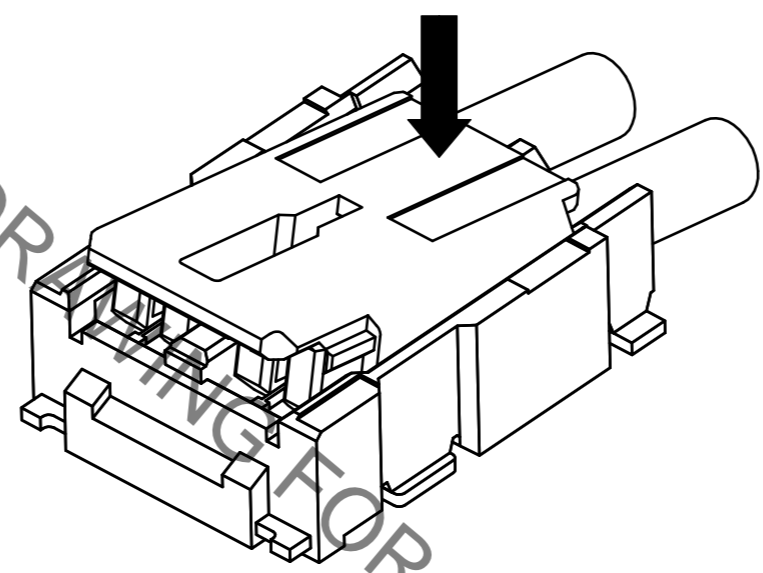
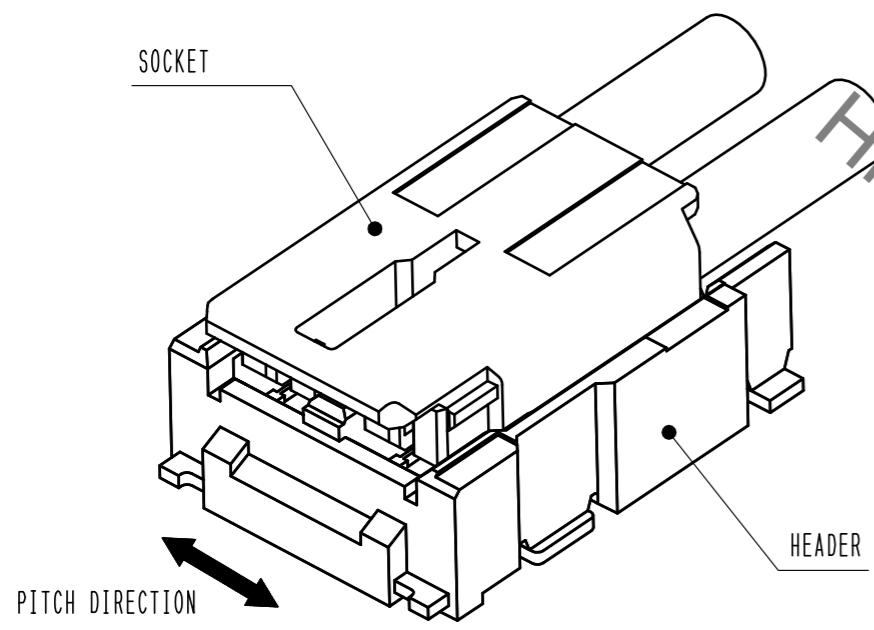
DF61 Series Mating / Unmating Operation Instruction

Mating

① By positioning the convexity of the socket sides to the header concavity, align the centers of the socket and the header in pitch direction.

② Slightly press the socket down at cable side to tilted angle.

③ Press down at the lever side with stabilizing the cable side to insert. Mating completes.

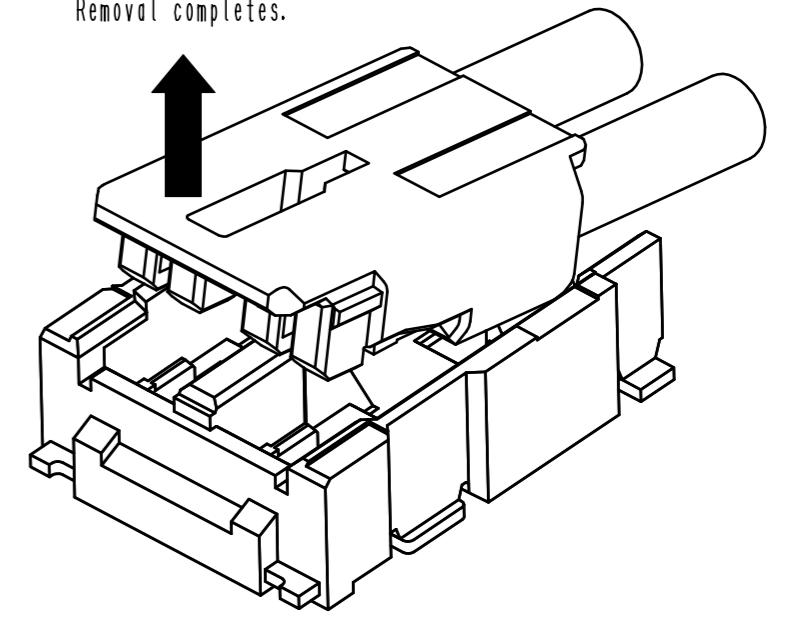
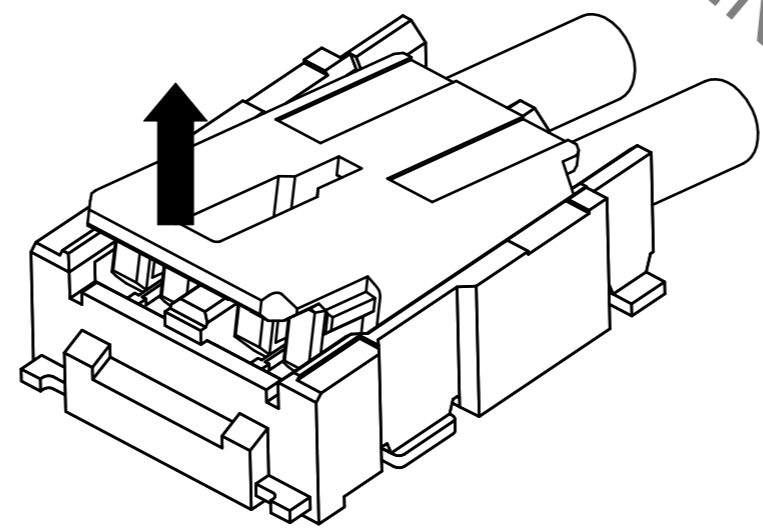
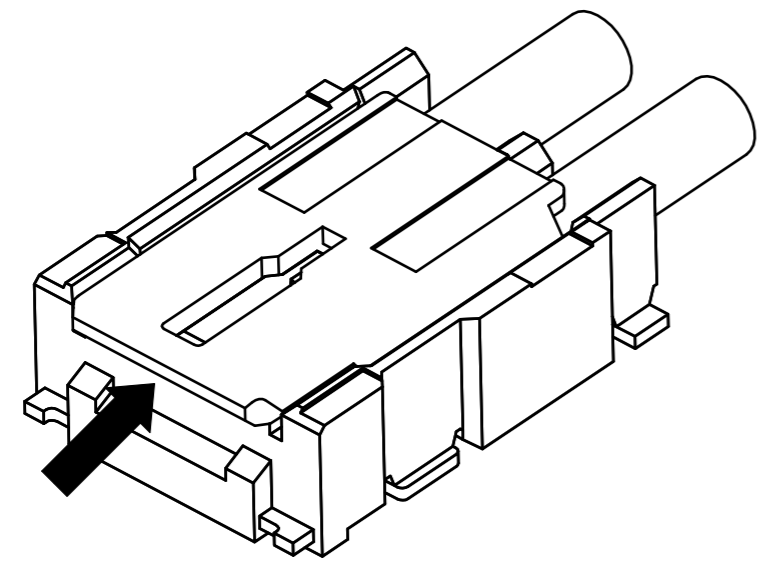


Unmating

① Hook the lever with finger nail.

② Lift up to the upper direction and friction lock is released.

③ Lift up to the upper direction and positive lock is released. Removal completes.



HRS	図番:	EDC3-336115-02		3/3
	製品名:	DF61-2P-2.2V(22)		
	製品コード:	CL666-5001-1-22		

Jan.1.2022 Copyright 2022 HIROSE ELECTRIC CO., LTD. All Rights Reserved. In case of consideration for using Automotive equipment / device which demand high reliability, kindly contact our sales window correspondents.