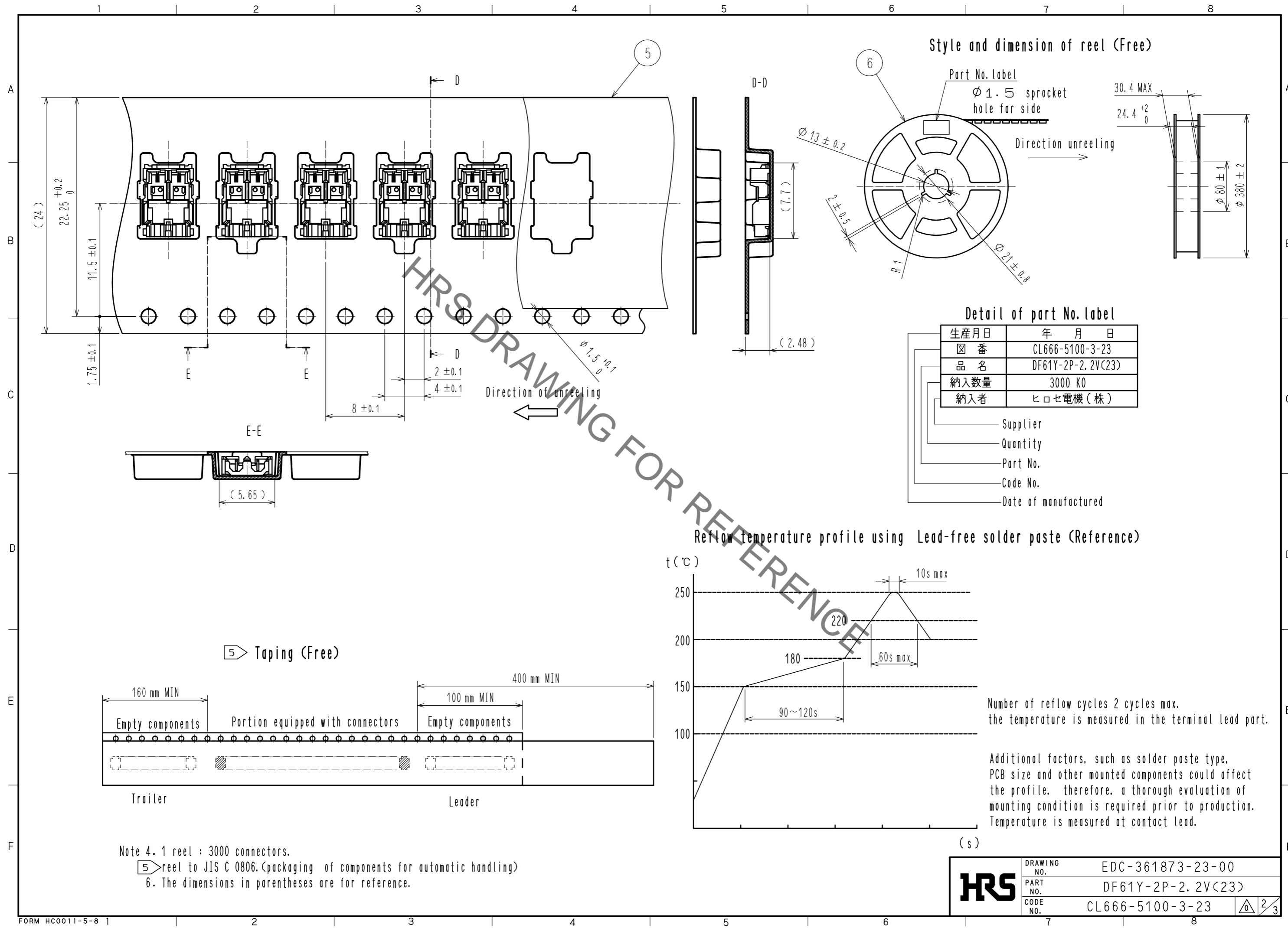


Mar.1.2021 Copyright 2021 HIROSE ELECTRIC CO., LTD. All Rights Reserved.
 In case of consideration for using Automotive equipment / device which demand high reliability, kindly contact our sales window correspondents.



Note 4. 1 reel : 3000 connectors.
 5) Taping (Free)
 6) The dimensions in parentheses are for reference.

HRS	DRAWING NO.	EDC-361873-23-00
	PART NO.	DF61Y-2P-2.2V(23)
	CODE NO.	CL666-5100-3-23
		\triangle 2/3

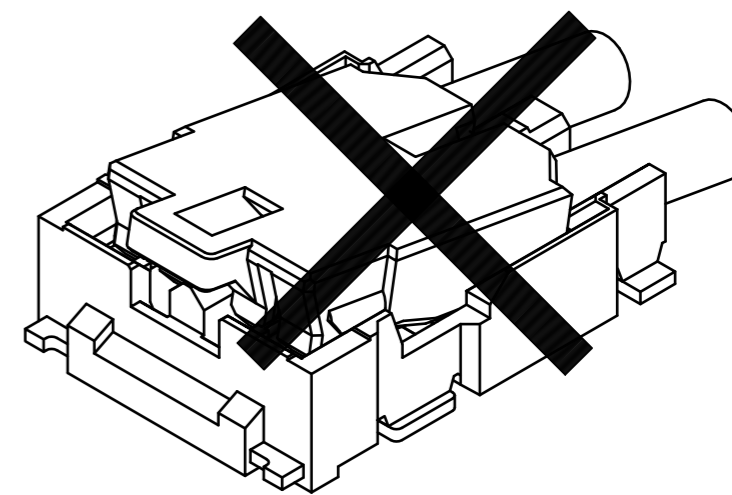
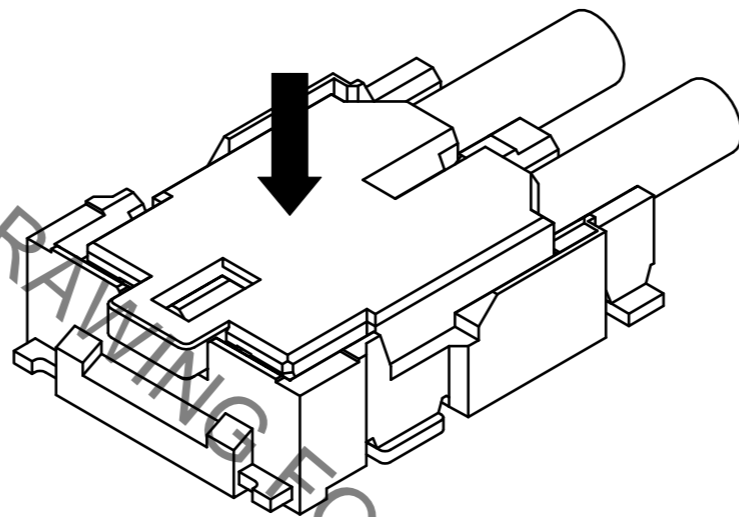
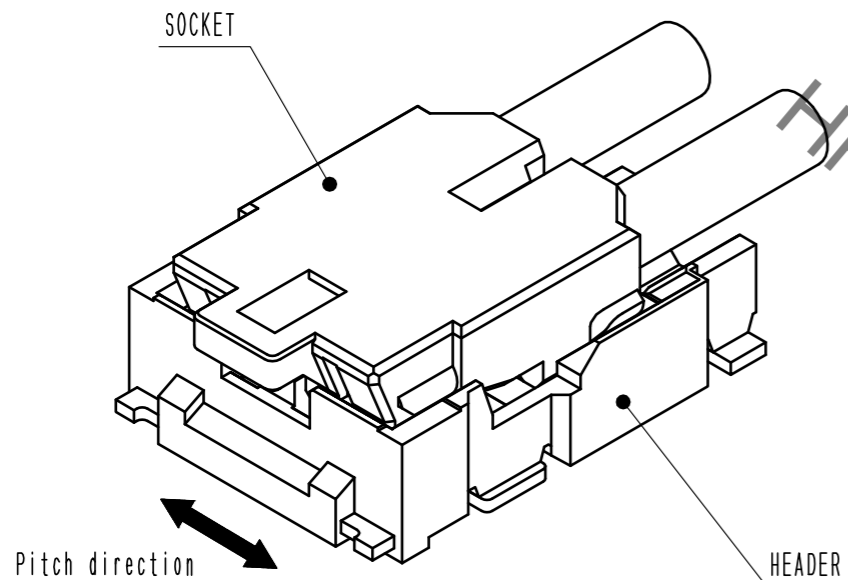
DF61Y Series Mating / Unmating Operation Instruction

Mating

① By positioning the convexity of the socket sides to the header concavity, align the centers of the socket and the header in pitch direction.

② Slightly press the socket down at the center of the socket.

③ Press down at the lever side with stabilizing the cable side to insert. Mating completes.

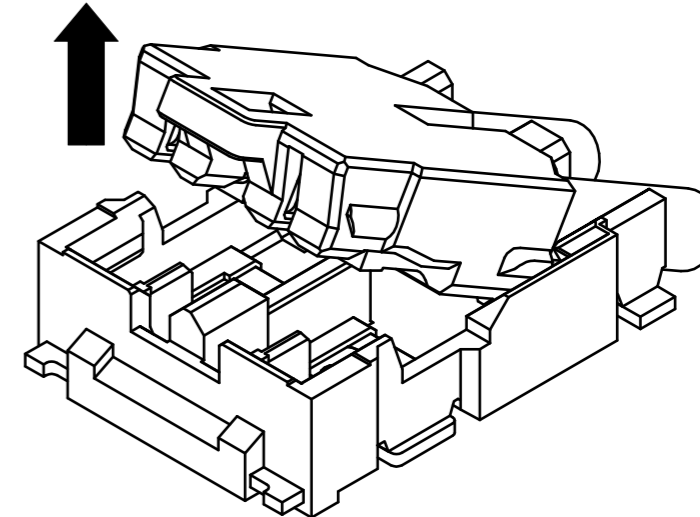
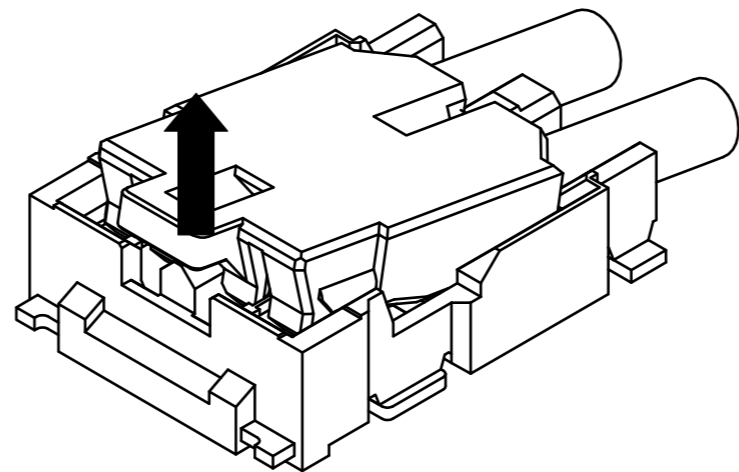
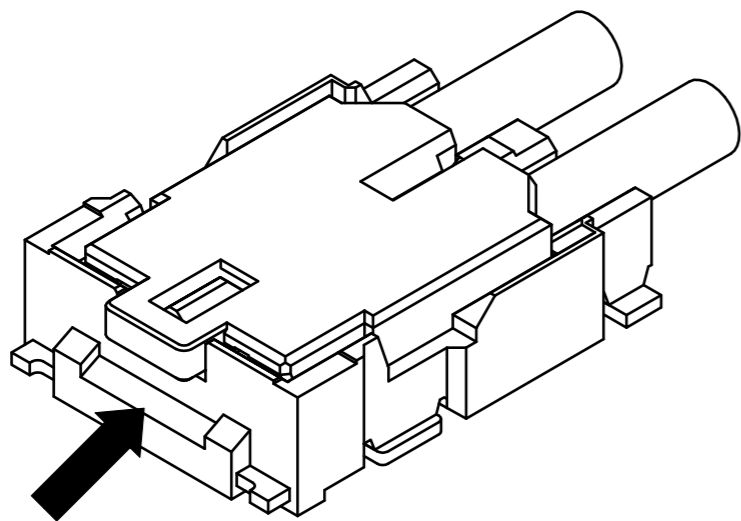


Unmating

① Hook the lever with finger nail.

② Lift up to the upper direction and friction lock is released.

③ Lift it up to the upper direction more, and removal completes.



HRS	DRAWING NO.	EDC-361873-23-00
	PART NO.	DF61Y-2P-2.2V(23)
	CODE NO.	CL666-5100-3-23
		3/3

Mar.1.2021 Copyright 2021 HIROSE ELECTRIC CO., LTD. All Rights Reserved. In case of consideration for using Automotive equipment / device which demand high reliability, kindly contact our sales window correspondents.