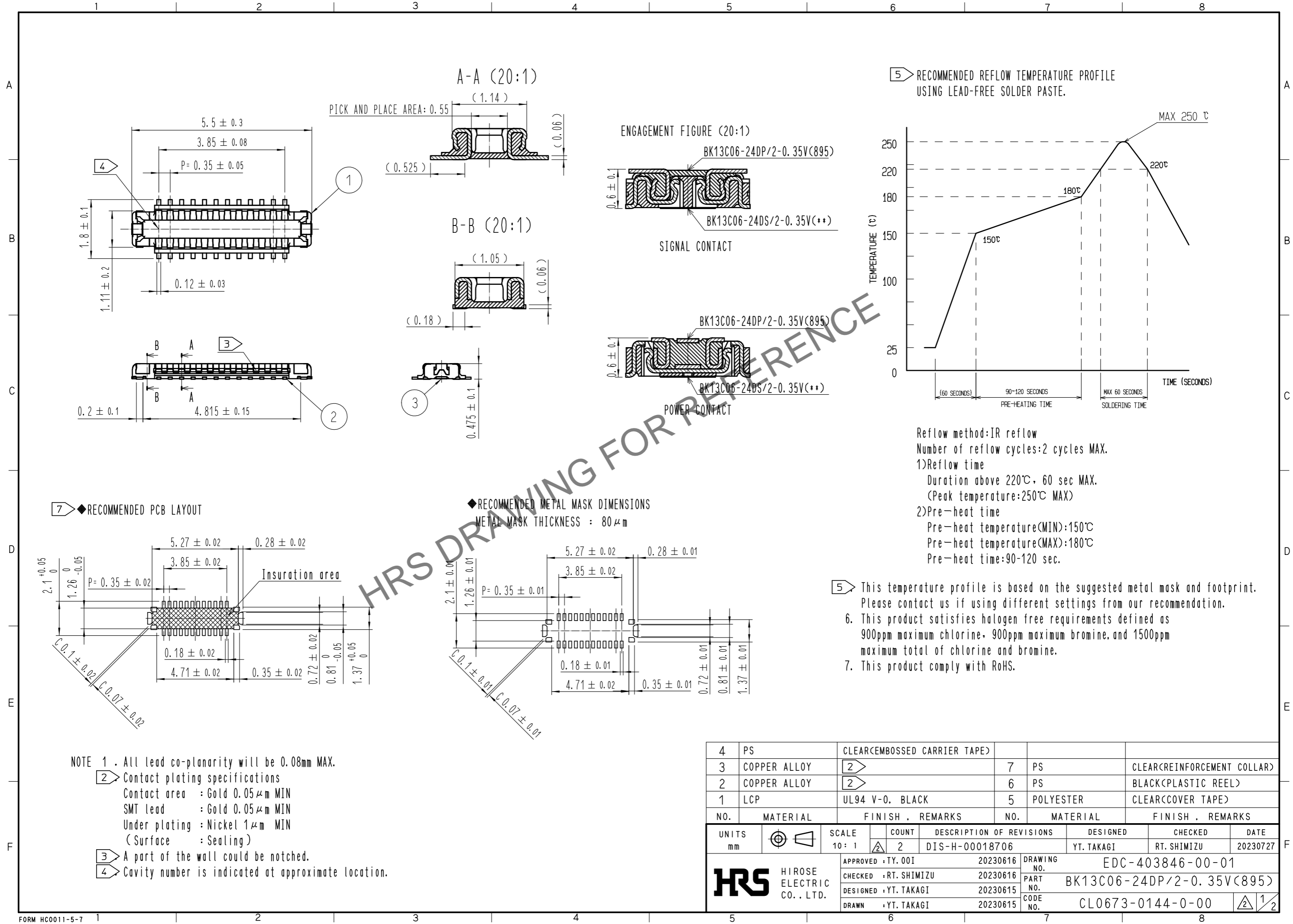


Jan.1.2025 Copyright 2025 HIROSE ELECTRIC CO., LTD. All Rights Reserved.
 In case of consideration for using Automotive equipment / device which demand high reliability, kindly contact our sales window correspondents.



NOTE 1. All lead co-planarity will be 0.08mm MAX.
2 Contact plating specifications
 Contact area : Gold 0.05μm MIN
 SMT lead : Gold 0.05μm MIN
 Under plating : Nickel 1μm MIN
 (Surface : Sealing)
3 A part of the wall could be notched.
4 Cavity number is indicated at approximate location.

NO.	MATERIAL	FINISH .	REMARKS	NO.	MATERIAL	FINISH .	REMARKS
4	PS		CLEAR(EMBOSSED CARRIER TAPE)				
3	COPPER ALLOY	2		7	PS		CLEAR(REINFORCEMENT COLLAR)
2	COPPER ALLOY	2		6	PS		BLACK(PLASTIC REEL)
1	LCP		UL94 V-0. BLACK	5	POLYESTER		CLEAR(COVER TAPE)

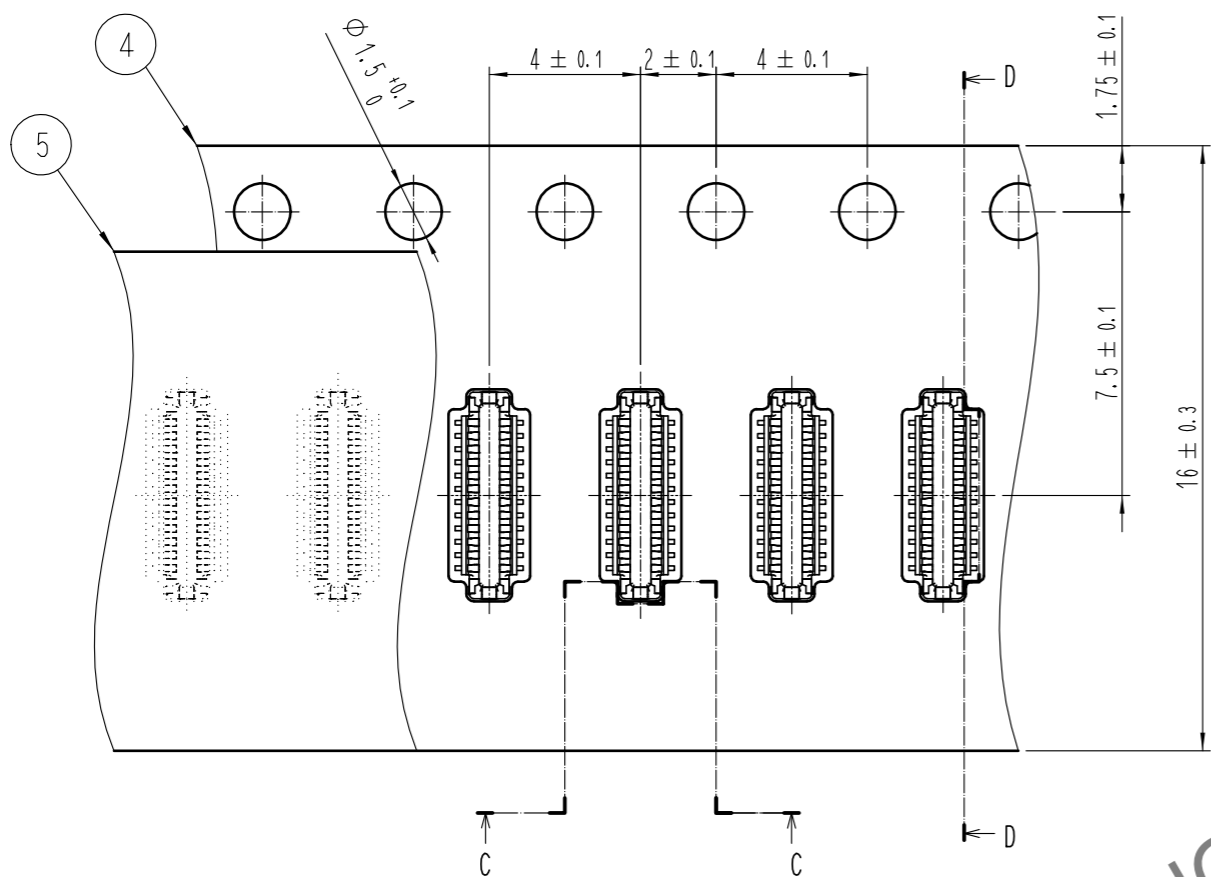
UNITS	SCALE	COUNT	DESCRIPTION OF REVISIONS	DESIGNED	CHECKED	DATE
mm	10:1	2	DIS-H-00018706	YT. TAKAGI	RT. SHIMIZU	20230727

APPROVED	CHECKED	DESIGNED	DRAWN	DRAWING NO.	PART NO.	CODE NO.
TY. 001	RT. SHIMIZU	YT. TAKAGI	YT. TAKAGI	EDC-403846-00-01	BK13C06-24DP/2-0.35V(895)	CL0673-0144-0-00

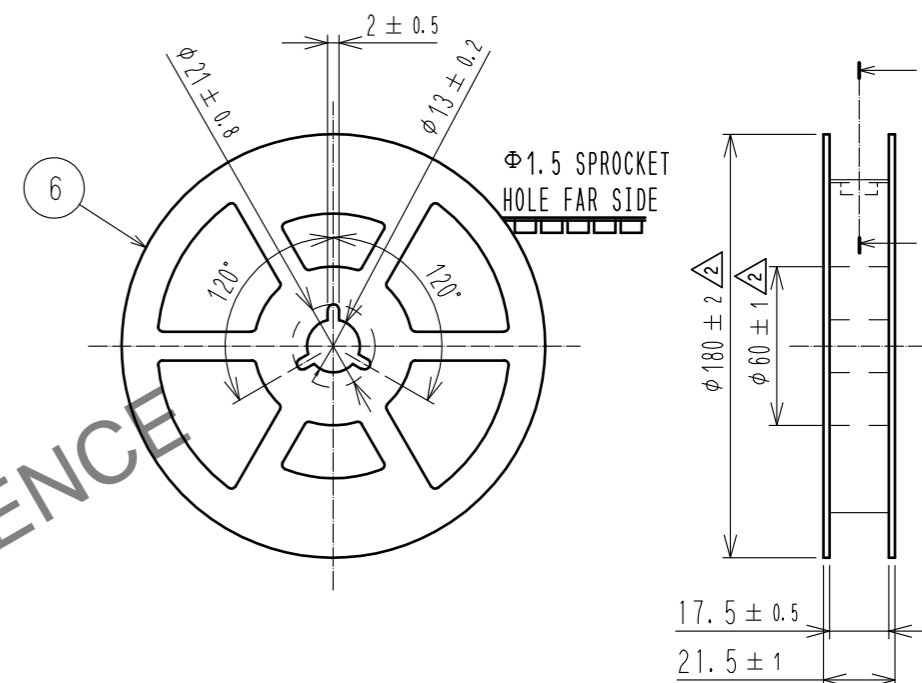
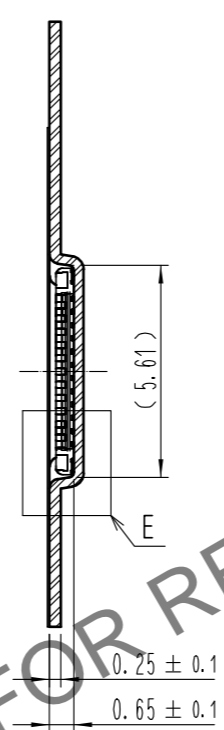
Jan.1.2025 Copyright 2025 HIROSE ELECTRIC CO., LTD. All Rights Reserved.
 In case of consideration for using Automotive equipment / device which demand high reliability, kindly contact our sales window correspondents.

EMBOSSED CARRIER TAPE PACKAGING (5:1)

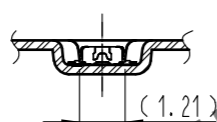
STYLE AND DIMENSION OF REEL (FREE)



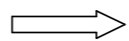
D-D (5:1)



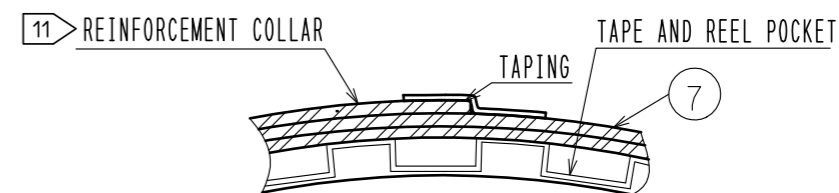
C-C (5:1)



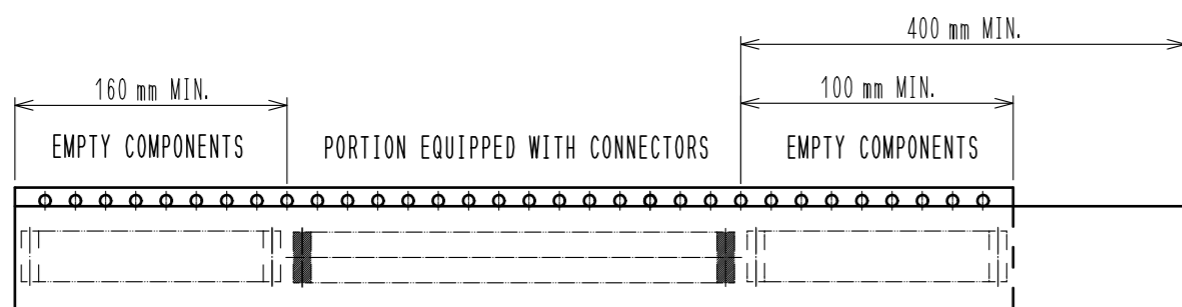
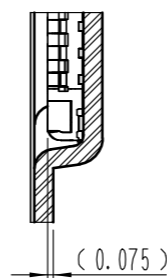
DIRECTION OF UNREELING



F-F (FREE)



E (10:1)



- 8 . 1,000 connectors per reel.
- 9 . The dimensions in parentheses are for reference.
- 10 . Refer to IEC 60286-3 (packaging of components for automatic handling)
- 11 . The reinforcing collar is wrapped around the emboss tape and taped down at the end of the collar.

HRS	DRAWING NO.	EDC-403846-00-01	
	PART NO.	BK13C06-24DP/2-0.35V(895)	
	CODE NO.	CL0673-0144-0-00	2/2