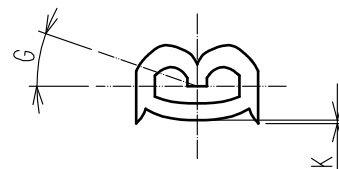
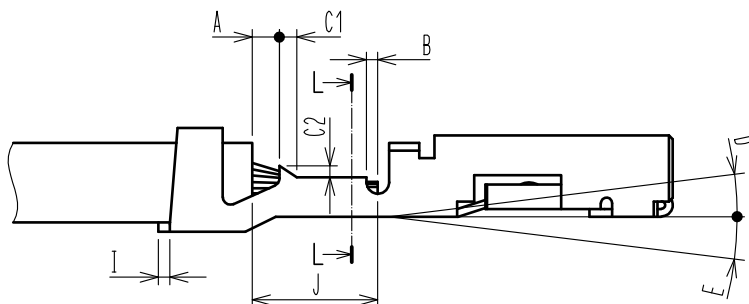


L-L (Crimp-Contact cross-section image)
: where the jacket is removed.



Check point		Measure (mm)	Remarks
Cover location.	A	0.2 to 1.1	
Location of tip of the core.	B	0.2 to 1.0	
Bell-mouth.	C1	0.2 to 0.5	
	C2	0.1 to 0.3	
Bent-up.	D	3°MAX	
Bent-down.	E	3°MAX	
Twist.	F	± 3°MAX	
Rolling.	G	± 5°MAX	
Wide of Lance	H	2.6 to 3.1	
cut-off tab.	I	0.2MAX	
Strip length.	J	3.0 to 4.0	Strip length prior to crimping.
Height of metal cut-out teeth.	K	0.1MAX	

NOTE 1 To adjust applicator, please check the crimp condition (crimp height and configuration) by using cable.

COUNT	DESCRIPTION OF REVISIONS	DESIGNED	CHECKED	DATE
△0				
TITLE		HRS HIROSE ELECTRIC CO., LTD. APPROVED HS. OKAWA 18.09.10 CHECKED SZ. ONO 18.09.10 CHARGED TS. MIYAKI 18.09.10 WRITTEN TS. MIYAKI 18.09.10		
DF5(A)-****SC**(%%) Crimp Quality Standard		TECHNICAL SPECIFICATION ETAD-H0948-00		
		1 1		