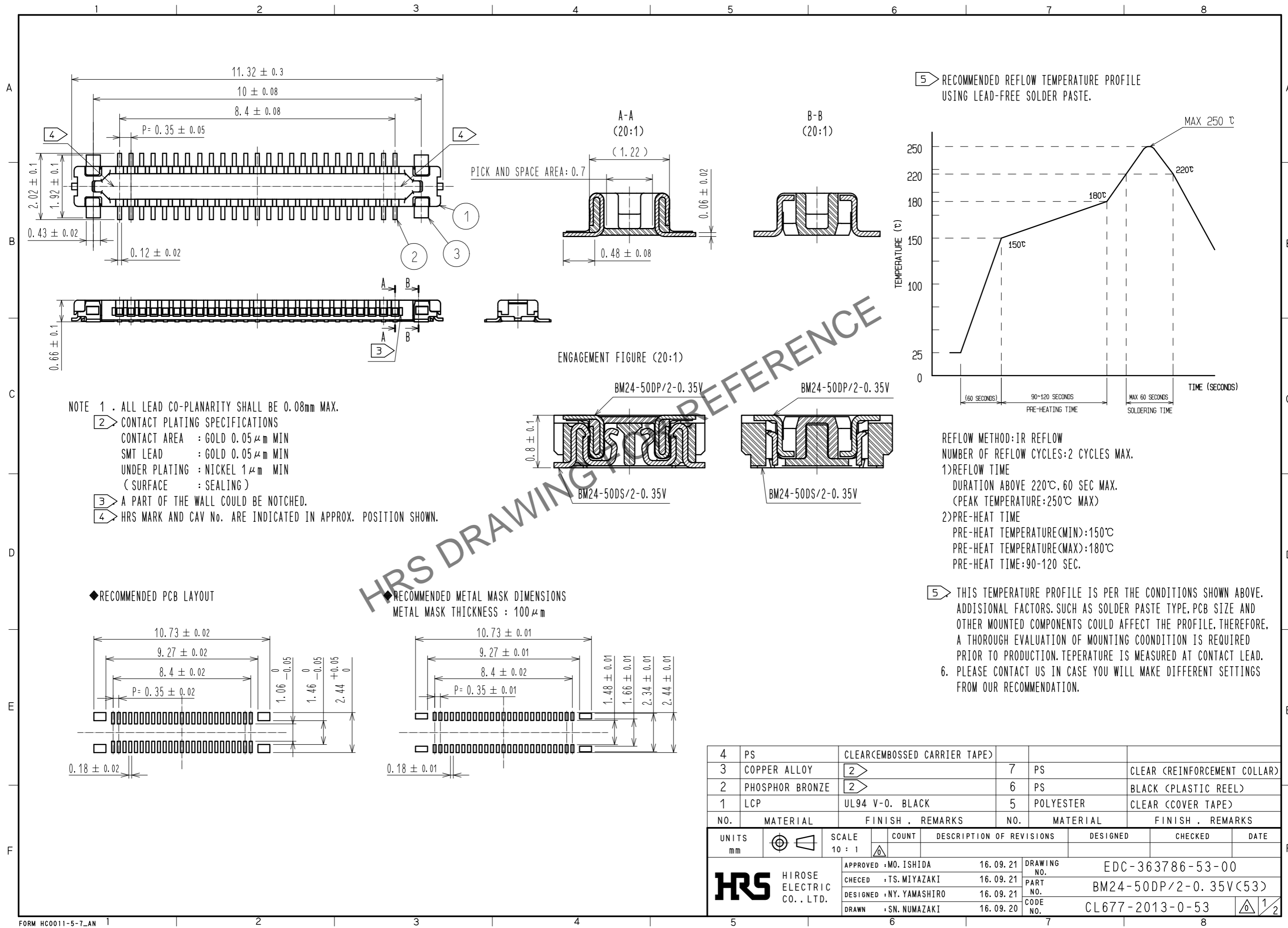


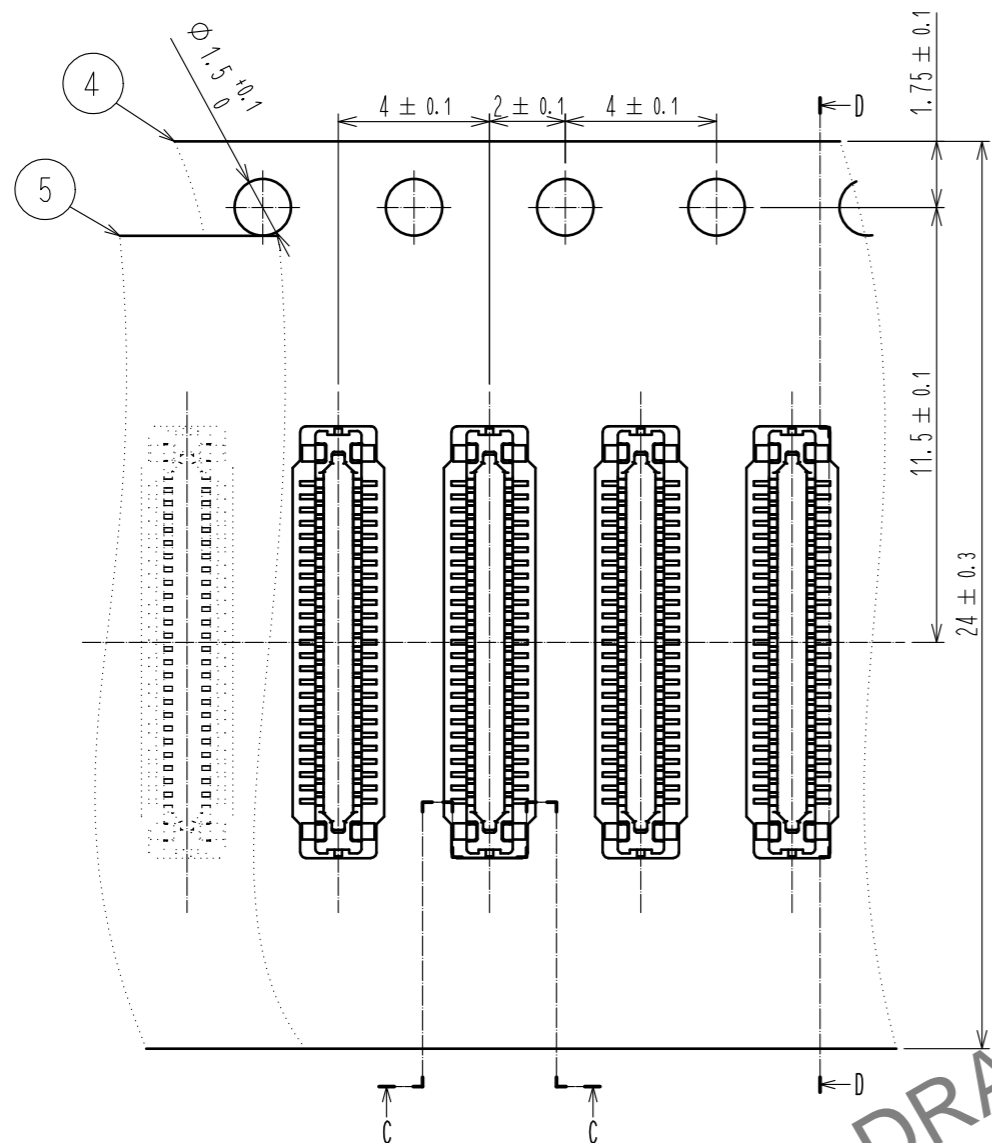
Sep.1.2024 Copyright 2024 HIROSE ELECTRIC CO., LTD. All Rights Reserved.  
In case of consideration for using Automotive equipment / device which demand high reliability, kindly contact our sales window correspondents.



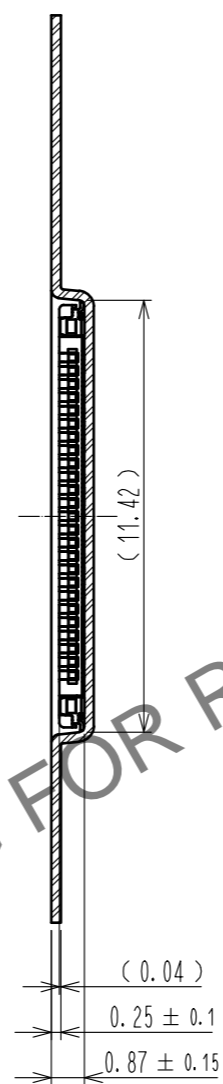
4	PS	CLEAR(EMBOSSED CARRIER TAPE)			
3	COPPER ALLOY	<b>2</b>	7	PS	CLEAR (REINFORCEMENT COLLAR)
2	PHOSPHOR BRONZE	<b>2</b>	6	PS	BLACK (PLASTIC REEL)
1	LCP	UL94 V-0. BLACK	5	POLYESTER	CLEAR (COVER TAPE)
NO.	MATERIAL	FINISH . REMARKS	NO.	MATERIAL	FINISH . REMARKS
UNITS mm		SCALE 10 : 1	COUNT 	DESCRIPTION OF REVISIONS	DESIGNED
<b>HRS</b> HIROSE ELECTRIC CO., LTD.		APPROVED : MO. ISHIDA	16.09.21	DRAWING NO.	EDC-363786-53-00
		CHECKED : TS. MIYAZAKI	16.09.21	PART NO.	BM24-50DP/2-0.35V(53)
		DESIGNED : NY. YAMASHIRO	16.09.21	CODE NO.	CL677-2013-0-53
		DRAWN : SN. NUMAZAKI	16.09.20		1/2

Sep.1.2024 Copyright 2024 HIROSE ELECTRIC CO., LTD. All Rights Reserved.  
In case of consideration for using Automotive equipment / device which demand high reliability, kindly contact our sales window correspondents.

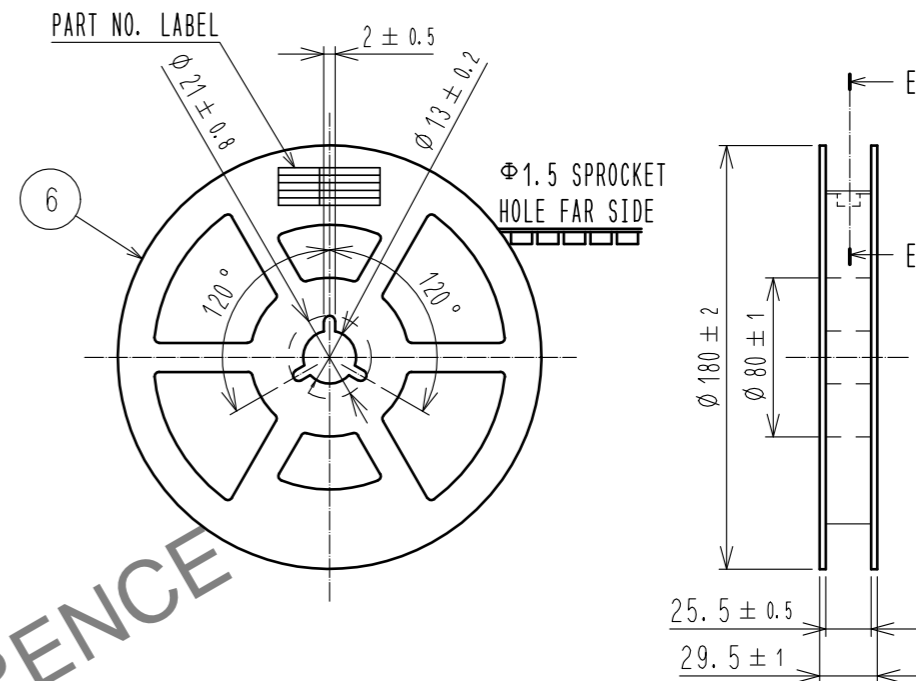
EMBOSSED CARRIER TAPE PACKAGING (FREE)



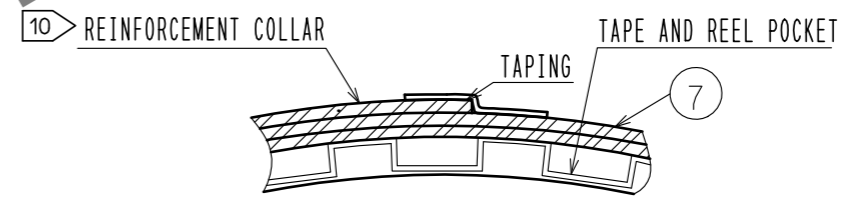
D-D(5:1)



STYLE AND DIMENTION OF REEL (FREE)

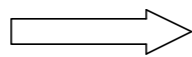


E-E (FREE)

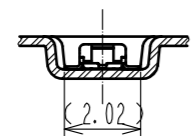


HRS DRAWING FOR REFERENCE

DIRECTION OF UNREELING



C-C (5:1)

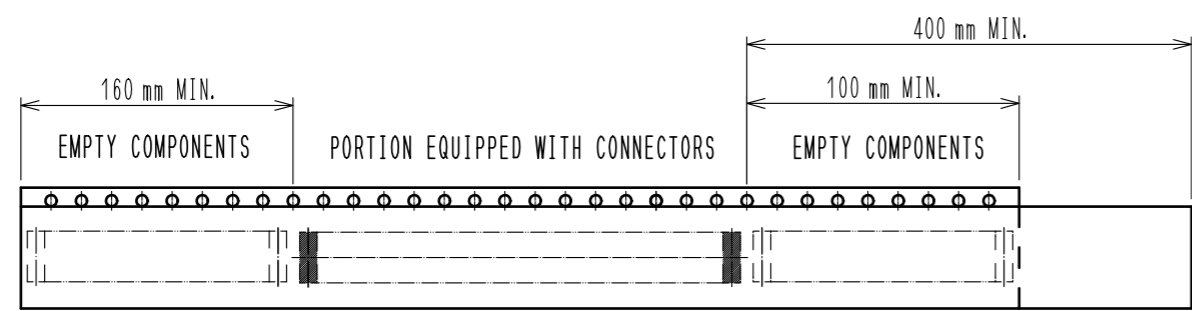


DETAIL OF PART NO. LABEL

製造年月日	** ** *
製品コード	CL0677-2013-0(53)
製品名	BM24-50DP/2-0.35V(53)
数量	1,000
納入者	ヒロセ電機(株)

DATA OF MANUFACTURED  
CODE NO.  
PART NO.  
QUANTITY  
SUPPLIER

- 7 . PER REEL 1,000 CONNECTORS.
- 8 . THE DIMENSIONS IN PARENTHESES ARE FOR REFERENCE.
- 9 . REFER TO JIS C 0806, IEC 60286-3(PACKAGING OF COMPONENTS FOR AUTOMATIC HANDLING)
- 10 . AFTER PACKAGING, ROLL 2 METERS OF THE REINFORCEMENT COLLAR TO OUTER CIRCUMFERENCE OF TAPE AND REEL POCKET, AND TAPE DOWN AT THE END THE COLLAR.



9 TAPING(FREE)

<b>HRS</b>	DRAWING NO.	EDC-363786-53-00
	PART NO.	BM24-50DP/2-0.35V(53)
	CODE NO.	CL677-2013-0-53
		2/2