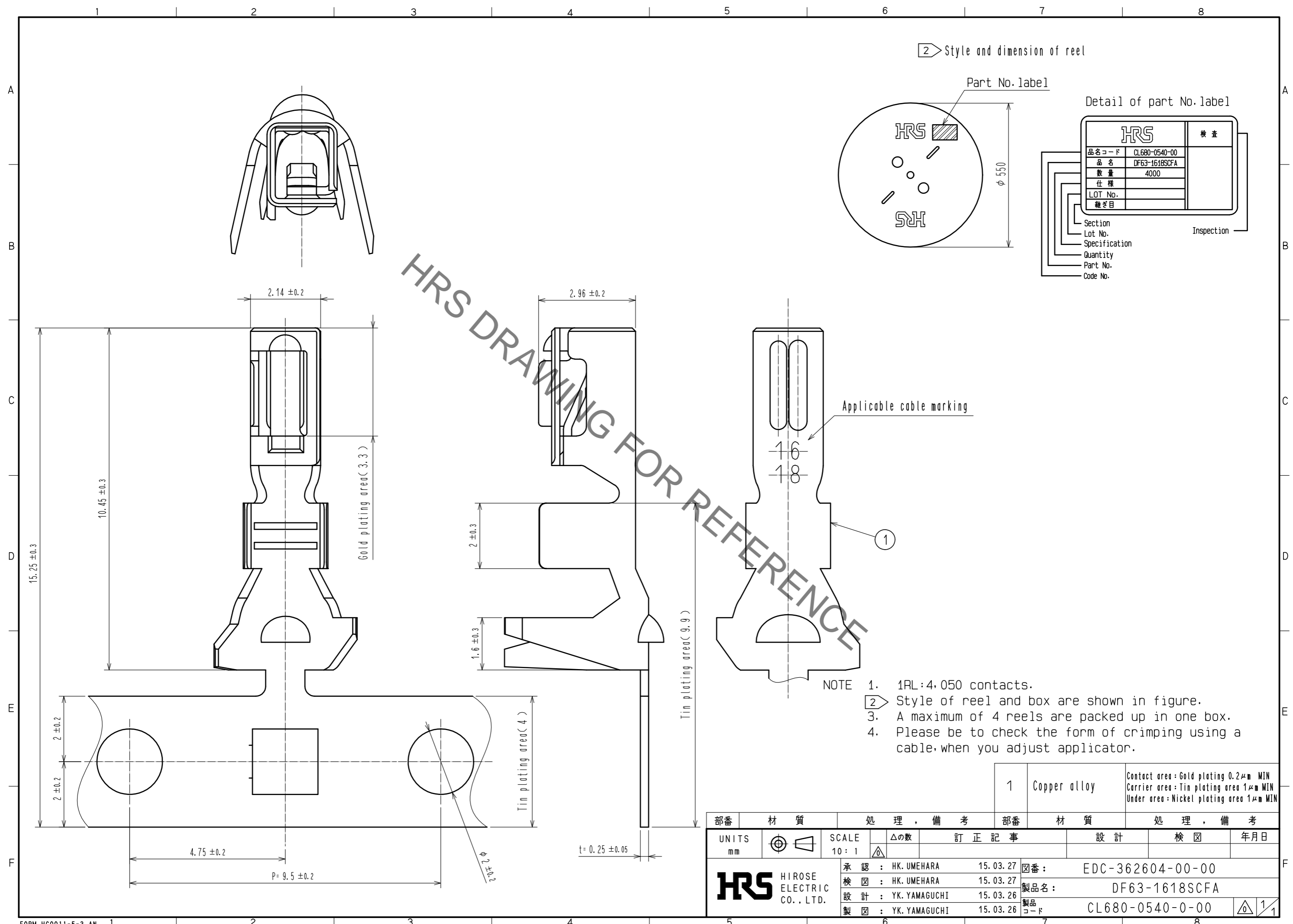


Jun.1.2021 Copyright 2021 HIROSE ELECTRIC CO., LTD. All Rights Reserved.  
In case of consideration for using Automotive equipment / device which demand high reliability, kindly contact our sales window correspondents.



|                               |              |                             |       |                  |   |
|-------------------------------|--------------|-----------------------------|-------|------------------|---|
| 部番                            | 材質           | 処理, 備考                      | 部番    | 材質               | 処理, 備考  |
| 1                             | Copper alloy |                             |       |                  | Contact area: Gold plating 0.2μm MIN<br>Carrier area: Tin plating area 1μm MIN<br>Under area: Nickel plating area 1μm MIN |
| UNITS<br>mm                   |              | SCALE<br>10:1               | △の数   | 訂正記事             | 設計  |
| HRS HIROSE ELECTRIC CO., LTD. |              | 承認: HK. UMEHARA 15.03.27    | 図番:   | EDC-362604-00-00 |   |
|                               |              | 検 査: HK. UMEHARA 15.03.27   | 製品名:  | DF63-1618SCFA    |   |
|                               |              | 設 計: YK. YAMAGUCHI 15.03.26 | 製品コード | CL680-0540-0-00  |   |
|                               |              | 製 図: YK. YAMAGUCHI 15.03.26 |       |                  |   |